

# 723

2001 3088

FILED  
RECORDERS OFFICE  
JONES COUNTY IOWA

01 SEP -5 AM 9:08

MARIE KRUTZFIELD  
RECORDER ~~NO FEE~~

# (CORRECTION CERTIFICATE)

J.D. Tjepkes, L.S. JONES COUNTY ENGINEER'S OFFICE, 19501 HWY. 64, ANAMOSA, IOWA, 52205 (319)462-3785

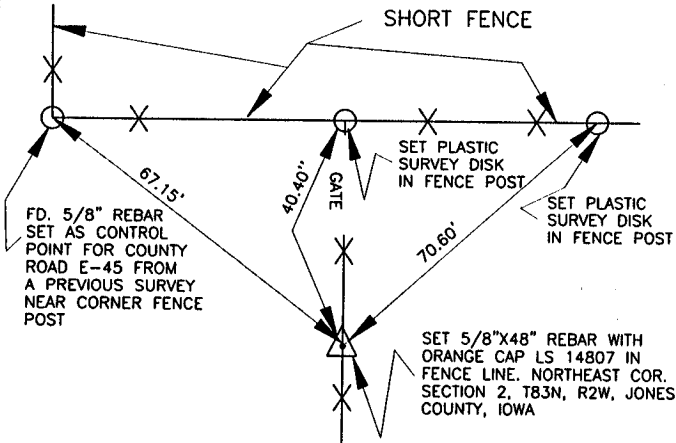
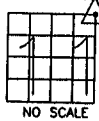
## UNITED STATES PUBLIC LAND SURVEY CORNER CERTIFICATE

LAND SURVEY MONUMENTS SITUATED IN SECTION 11, TOWNSHIP 83  
NORTH, RANGE 2 WEST OF THE 5TH P.M., JONES COUNTY, IOWA

### CORNERS TO BE INDEXED

CORNER SECTION TOWNSHIP RANGE  
NORTHEAST 11 83N 2W  
OFFICE FILE NO.

83211e\_051501



PREVIOUSLY RECORDED IN BOOK N/A, PAGE N/A  
MONUMENT DESCRIPTION AND HOW ESTABLISHED SET 5/8\"/>

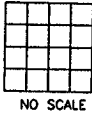
### (CORRECTION CERTIFICATE)

THIS CERTIFICATE WAS ORIGINALLY FILED AS THE NORTHEAST CORNER OF SECTION 2, T83N, R2W OF THE 5TH P.M., JONES COUNTY UNDER FILE NO. 2001-1687 AND SHOULD HAVE BEEN FILED AS THE NORTHEAST CORNER OF SECTION 11, T83N, R2W OF THE 5TH P.M.

### CORNERS TO BE INDEXED

CORNER SECTION TOWNSHIP RANGE

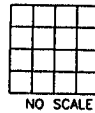
OFFICE FILE NO.



### CORNERS TO BE INDEXED

CORNER SECTION TOWNSHIP RANGE

OFFICE FILE NO.



PREVIOUSLY RECORDED IN BOOK \_\_\_\_\_, PAGE \_\_\_\_\_  
MONUMENT DESCRIPTION AND HOW ESTABLISHED \_\_\_\_\_

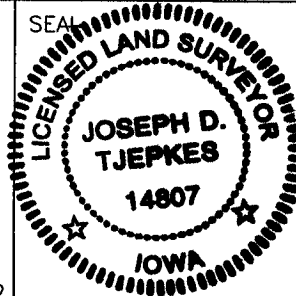
PREVIOUSLY RECORDED IN BOOK \_\_\_\_\_, PAGE \_\_\_\_\_  
MONUMENT DESCRIPTION AND HOW ESTABLISHED \_\_\_\_\_

I hereby declare that this plat, survey or report was made by me or under my direct personal supervision and that I am a duly registered Land Surveyor under the laws of the State of Iowa.

Signed:

*Joseph D. Tjepkes* 9-5-01

Joseph D. Tjepkes L.S. Iowa Reg. No. 14807  
My Registration Renewal Date is December 31, 2002



J.D. Tjepkes LS 14807  
JONES COUNTY  
ENGINEER'S OFFICE

19501 HWY. 64,  
ANAMOSA, IOWA,  
52205 (319)462-3785

# SECTION CORNER CERTIFICATE

OF  
 LAND SURVEY MONUMENTS SITUATED IN SECTION 1, TOWNSHIP 83 NORTH,  
 RANGE 2 WEST, OF THE FIFTH PRINCIPAL MERIDIAN, JONES, COUNTY, IOWA.

PREVIOUSLY RECORDED IN BOOK \_\_\_\_\_ AT PAGE \_\_\_\_\_.

FOR RECORDER'S USE

**REASON FOR PREPARING CERTIFICATE:**

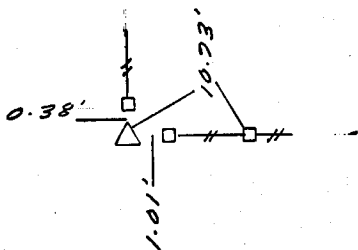
- A) THERE IS NO CERTIFICATE FOR THE CORNER ON FILE WITH THE RECORDER OF THE COUNTY IN WHICH THE CORNER IS LOCATED.
- B) CORNER POSITION DIFFERS FROM THAT SHOWN IN THE PUBLIC RECORDS OF THE COUNTY IN WHICH THE CORNER IS LOCATED.
- C) THE CORNER MONUMENT HAS BEEN REPLACED OR MODIFIED.
- D) THE REFERENCE TIES REFERRED TO IN AN EXISTING PUBLIC RECORD ARE INCORRECT.

**MONUMENT DESCRIPTION AND REMARKS :**

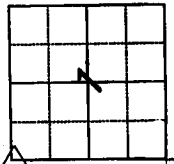
## RECOVERY TIE DRAWING

SW. COR. 1-83-2

X NAILS  
(TYP.)



FOUND 5/8" PIN



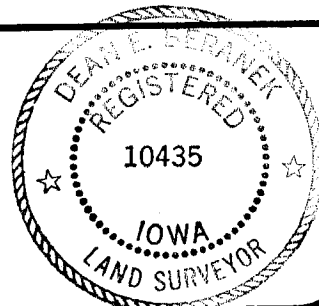
NOT TO SCALE

2-2-93 SW COR 1-83-2 M.S.

I, DEAN E. BERANEK, CERTIFY THAT THE CORNER LOCATION(S) SHOWN ON THIS RECORD WERE DETERMINED BY ME OR UNDER MY DIRECTION AND CONTROL AND THAT THIS U.S. PUBLIC LAND SURVEY MONUMENT RECORD IS CORRECT AND COMPLETE TO THE BEST OF MY KNOWLEDGE AND BELIEF.

*Dean E. Beranek* 2-23-93

DEAN E. BERANEK L.S. NO 10435 DATE  
 MY BIENNIAL REGISTRATION EXPIRES DECEMBER 31, 1993.



**SYMBOLS**  
 ▲ GOVERNMENT CORNER  
 ○ 5/8" TIE PIN SET  
 --- CENTERLINE  
 - - - EXISTING FENCE LINE  
 - - - R.O.W. LINE

**SHEET TITLE:** U.S. PUBLIC LAND SURVEY CORNER CERTIFICATE  
**PROJECT TITLE:** A PORTION OF THE SE 1/4, FRCL SEC. 1 -T83N-R2W-5TH PM., JONES CO. IA.



**MMS CONSULTANTS, INC.**  
 Iowa City, Iowa  
 319-351-8282

DW DEB

KIC

APP

DATE 2-21-93

SCALE NONE

FILE NO 312\323

FILE NO 3405-001