

2001 1599

FILED  
RECORDERS OFFICE  
JONES COUNTY IOWA

01 MAY 15 AM 10:15

MARIE KRUTZFIELD  
RECORDER *No Fee*

J.D. Tjepkes, LS. JONES COUNTY ENGINEER'S OFFICE, 19501 HWY. 64, ANAMOSA, IOWA, 52205 (319)462-3785

# UNITED STATES PUBLIC LAND SURVEY CORNER CERTIFICATE

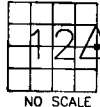
LAND SURVEY MONUMENTS SITUATED IN SECTION 12, TOWNSHIP 83  
NORTH, RANGE 2 WEST OF THE 5TH P.M., JONES COUNTY, IOWA

### CORNERS TO BE INDEXED

CORNER SECTION TOWNSHIP RANGE  
E-1/4 12 83N 2W

OFFICE FILE NO.

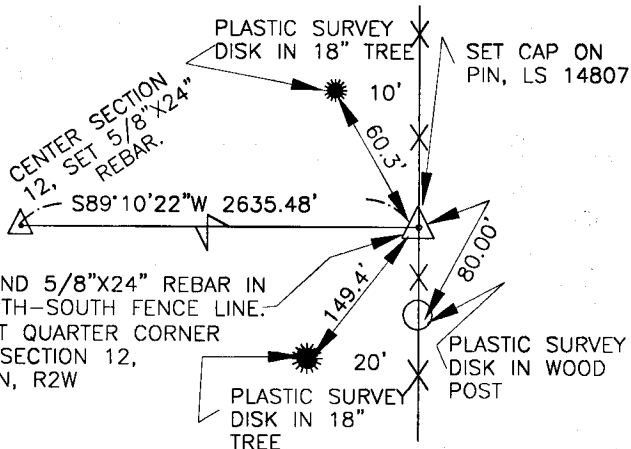
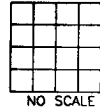
832126\_041201



### CORNERS TO BE INDEXED

CORNER SECTION TOWNSHIP RANGE

OFFICE FILE NO.



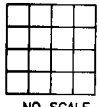
PREVIOUSLY RECORDED IN BOOK N/A, PAGE N/A  
MONUMENT DESCRIPTION AND HOW ESTABLISHED FOUND 5/8" X 24" REBAR IN NORTH-SOUTH FENCE LINE SET PREVIOUSLY BY COUNTY SURVEY CREW. FOUND REBAR TO BE IN GOOD POSITION. ACCEPTED AS E-1/4 OF SECTION 12. SET CAP ON PIN, AND TIED OUT AS INDICATED, T83N, R2W, JONES COUNTY

PREVIOUSLY RECORDED IN BOOK \_\_\_\_\_, PAGE \_\_\_\_\_  
MONUMENT DESCRIPTION AND HOW ESTABLISHED \_\_\_\_\_

### CORNERS TO BE INDEXED

CORNER SECTION TOWNSHIP RANGE

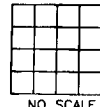
OFFICE FILE NO.



### CORNERS TO BE INDEXED

CORNER SECTION TOWNSHIP RANGE

OFFICE FILE NO.



PREVIOUSLY RECORDED IN BOOK \_\_\_\_\_, PAGE \_\_\_\_\_  
MONUMENT DESCRIPTION AND HOW ESTABLISHED \_\_\_\_\_

PREVIOUSLY RECORDED IN BOOK \_\_\_\_\_, PAGE \_\_\_\_\_  
MONUMENT DESCRIPTION AND HOW ESTABLISHED \_\_\_\_\_

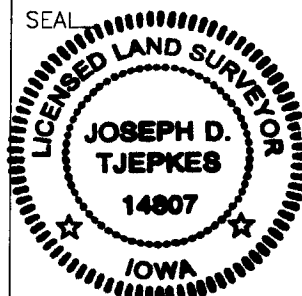
I hereby declare that this plat, survey or report was made by me or under my direct personal supervision and that I am a duly registered Land Surveyor under the laws of the State of Iowa.

Signed:

*[Signature]* 4-20-01

Joseph D. Tjepkes L.S. Iowa Reg. No. 14807  
My Registration Renewal Date is December 31, 2002

SEAL



J.D. Tjepkes LS 14807  
JONES COUNTY  
ENGINEER'S OFFICE

19501 HWY. 64,  
ANAMOSA, IOWA,  
52205 (319)462-3785