

Marie Krutzfield, Recorder  
 Jones County, Iowa

PREPARED BY  
 CLARENCE J. WALTON, JONES COUNTY ENGINEER'S OFFICE, 19501 HWY. 64, ANAMOSA, IOWA, 52205 (319) 462-3785

# UNITED STATES PUBLIC LAND SURVEY CORNER CERTIFICATE

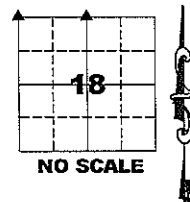
**LAND SURVEY MONUMENTS SITUATED IN SECTION 18, TOWNSHIP 83 NORTH,  
 RANGE 1 WEST OF THE 5TH PRINCIPAL MERIDIAN, JONES COUNTY, IOWA.**

**OFFICE FILE NO.**

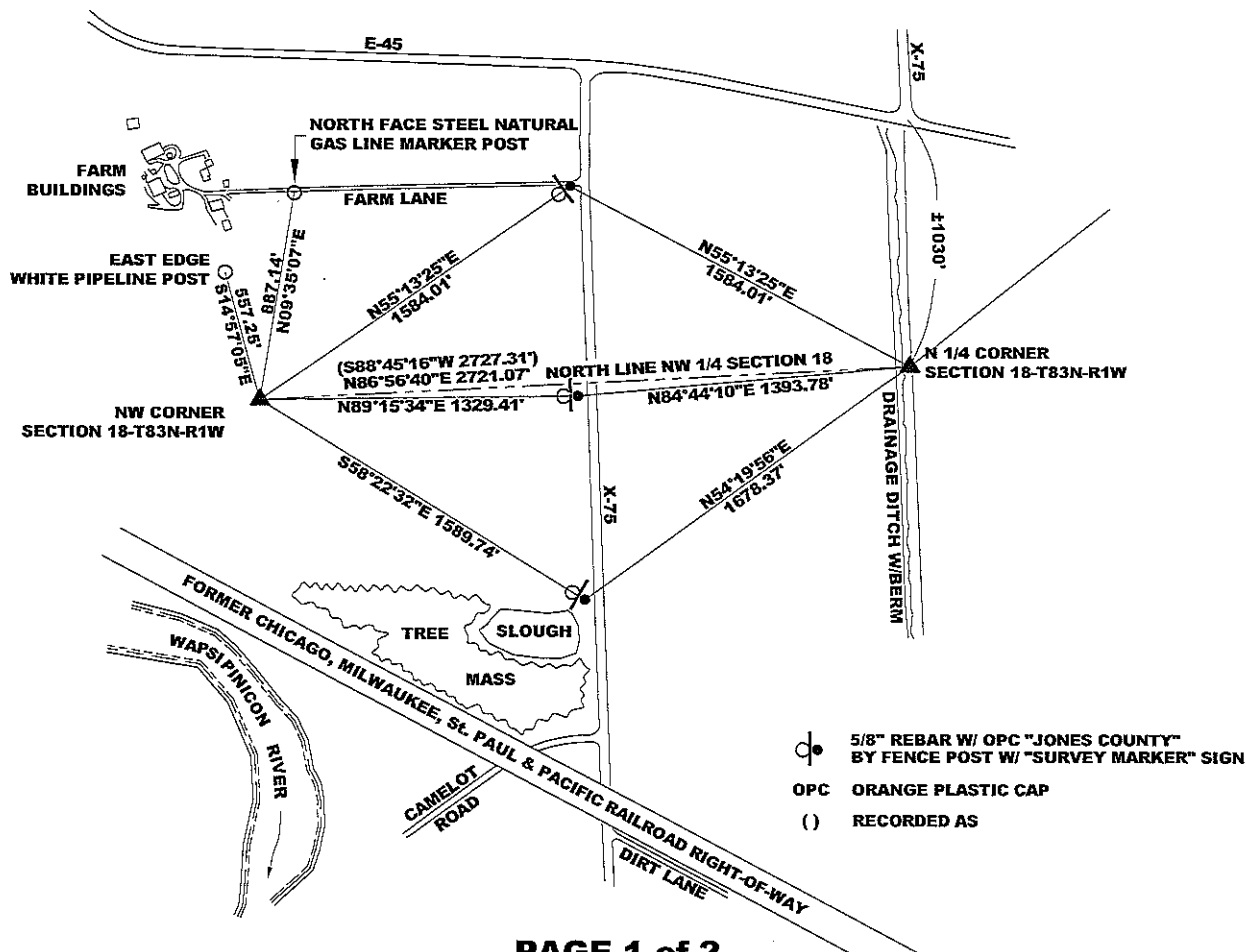
NW CORNER SECTION 18-T83N-R1W  
 STATE PLANE COORDINATE  
 NAD 83 IOWA NORTH  
 N 3474749.27  
 E 5596592.57

N 1/4 CORNER SECTION 18-T83N-R1W  
 STATE PLANE COORDINATE  
 NAD 83 IOWA NORTH  
 N 3474894.32  
 E 5599309.77

CORNER	SECTION	TOWNSHIP	RANGE
NW	18	T83N	R1W
N 1/4	18	T83N	R1W



**NOTE:**  
 THE STATE PLANE COORDINATE AS INDICATED IS FOR CONVENIENCE ONLY.  
 THE TIES AS SHOWN SHOULD BE USED TO REPLACE THE CORNER, IF  
 DESTROYED



**PAGE 1 of 2**

PREVIOUSLY RECORDED IN RECORDER'S DOCUMENT N/A  
 MONUMENT DESCRIPTION AND HOW ESTABLISHED NW CORNER SECTION 18-T83N-R1W: PROBES EXTENSIVELY BUT FOUND NO MONUMENT. NO EVIDENCE WAS FOUND OF LOCATION OF SECTION CORNER. PLATS RECORDED IN PLAT BOOK G, PAGE 103, IN PLAT BOOK H, PAGE 22, AND IN PLAT BOOK H, PAGE 104 SHOW NO INDICATION OF ANY MONUMENT FOUND OR SET. SINGLE PROPORTIONATE MEASUREMENT FROM THE SW CORNER OF SAID SECTION 18 TO THE W 1/4 CORNER OF SECTION 7-T83N-R1W SHOWS A VERY CLOSE CORRELATION WITH THE CORNER REFERENCES SHOWN ON THE AFOREMENTIONED PLATS AND WITH FOUND PROPERTY CORNERS OF CAMELOT CAMPGROUND. I THEREFORE SET THE NW CORNER OF SAID SECTION 18 ACCORDINGLY BY  
 (CONTINUED ON PAGE 2.)

I hereby certify that this land surveying document and the related survey work was performed by me or under my direct personal supervision and that I am a duly registered Land Surveyor under the laws of the State of Iowa.  
 Signed: *Clarence J. Walton* 5/5/09  
 Clarence J. Walton, L.S.  
 My Registration Renewal Date is December 31, 2009  
 Iowa License Number 11310  
 Pages or sheets covered by this seal: 1 of 2 and 2 of 2.

- A. THERE IS NO CERTIFICATE FOR THE CORNER ON FILE WITH THE RECORDER OF THE COUNTY IN WHICH THE CORNER IS LOCATED.
- B. THE CORNER MONUMENT HAS BEEN REPLACED OR MODIFIED.
- C. THE SURVEYOR IN RESPONSIBLE CHARGE OF THE LAND SURVEYING ACCEPTS A CORNER POSITION THAT DIFFERS FROM THAT SHOWN IN THE PUBLIC RECORDS OF THE COUNTY IN WHICH THE CORNER IS LOCATED.
- D. THE REFERENCE TIES REFERRED TO IN AN EXISTING PUBLIC RECORD NO LONGER EXIST.

CORNERS TO BE INDEXED			
CORNER	SECTION	TOWNSHIP	RANGE
NW	18	83N	1W
NE	13	83N	2W
SE	12	83N	2W
SW	7	83N	1W
N 1/4	18	83N	1W
S 1/4	7	83N	1W

**JONES COUNTY ENGINEER'S OFFICE**

19501 HWY. 64, ANAMOSA, IOWA 52205  
 (319) 462-3785

PREPARED BY  
 CLARENCE J. WALTON, JONES COUNTY ENGINEER'S OFFICE, 19501 HWY. 64, ANAMOSA, IOWA, 52205 (319) 462-3785

# UNITED STATES PUBLIC LAND SURVEY CORNER CERTIFICATE

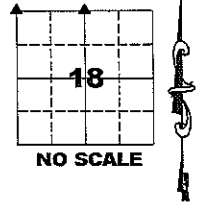
**LAND SURVEY MONUMENTS SITUATED IN SECTION 18, TOWNSHIP 83 NORTH,  
 RANGE 1 WEST OF THE 5TH PRINCIPAL MERIDIAN, JONES COUNTY, IOWA.**

**OFFICE FILE NO.**

NW CORNER SECTION 18-T83N-R1W  
 STATE PLANE COORDINATE  
 NAD 83 IOWA NORTH  
 N 3565384.77  
 E 5507070.36

N 1/4 CORNER SECTION 18-T83N-R1W  
 STATE PLANE COORDINATE  
 NAD 83 IOWA NORTH  
 N 3565384.77  
 E 5507070.36

CORNER	SECTION	TOWNSHIP	RANGE
NW	18	T83N	R1W
N 1/4	18	T83N	R1W



**NOTE:**  
 THE STATE PLANE COORDINATE AS INDICATED IS FOR CONVENIENCE ONLY.  
 THE TIES AS SHOWN SHOULD BE USED TO REPLACE THE CORNER, IF  
 DESTROYED

**MONUMENT DESCRIPTION AND HOW ESTABLISHED (CONTINUED FROM PAGE 1) SINGLE PROPORTIONATE MEASUREMENT BETWEEN THE SW CORNER OF SAID SECTION 18 AND THE W 1/4 CORNER OF SAID SECTION 7. SET 5/8" REBAR WITH ORANGE PLASTIC CAP #11310 24 INCHES BELOW SURFACE. N 1/4 CORNER SECTION 18-T83N-R1W: FOUND 3/4" ROD 24 INCHES BELOW SURFACE ON APPROXIMATELY 5 FEET EAST OF TOP OF EAST BERM OF DRAINAGE DITCH PER PLAT OF "BROWN'S PLACE" RECORDED IN PLAT BOOK H, PAGE 38 IN THE JONES COUNTY, IOWA RECORDER'S OFFICE. LOCATION OF CORNER VERY CLOSELY MATCHES PLATTED POSITION USING FOUND CALLED FOR MONUMENTS OF "BROWN'S PLACE". SET 5/8" X 24" REBAR WITH ORANGE PLASTIC CAP #11310. ALSO SET STEEL FENCE POST WITH "SURVEY MARKER" SIGN NEARBY AS A WITNESS TO CORNER.**

FIELD BOOK MISC. 2009, PAGE 160. DATE OF SURVEY: 4/23/09

**PAGE 2 of 2**

CORNERS TO BE INDEXED			
CORNER	SECTION	TOWNSHIP	RANGE
NW	18	83N	1W
NE	13	83N	2W
SE	12	83N	2W
SW	7	83N	1W
N 1/4	18	83N	1W
S 1/4	7	83N	1W

**JONES COUNTY ENGINEER'S OFFICE**



19501 HWY. 64, ANAMOSA, IOWA 52205  
 (319) 462-3785