

☐☐ Jones County Marie Krutzfield Recorder
 Fee Book 2012 2203
 07/31/2012 @11:17AM # Pages 1
 ZPS PLATS/SURVEYS
 Total Fees: \$7.00

COPY

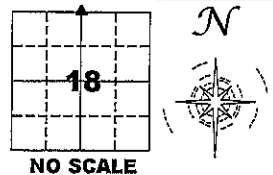
PREPARED BY
 CLARENCE J. WALTON, JONES COUNTY ENGINEER'S OFFICE, 19501 HWY. 64, ANAMOSA, IOWA, 52205 (319) 462-3785

UNITED STATES PUBLIC LAND SURVEY CORNER CERTIFICATE

LAND SURVEY MONUMENTS SITUATED IN SECTION 18, TOWNSHIP 83 NORTH,
 RANGE 2 WEST OF THE 5TH PRINCIPAL MERIDIAN, JONES COUNTY, IOWA.

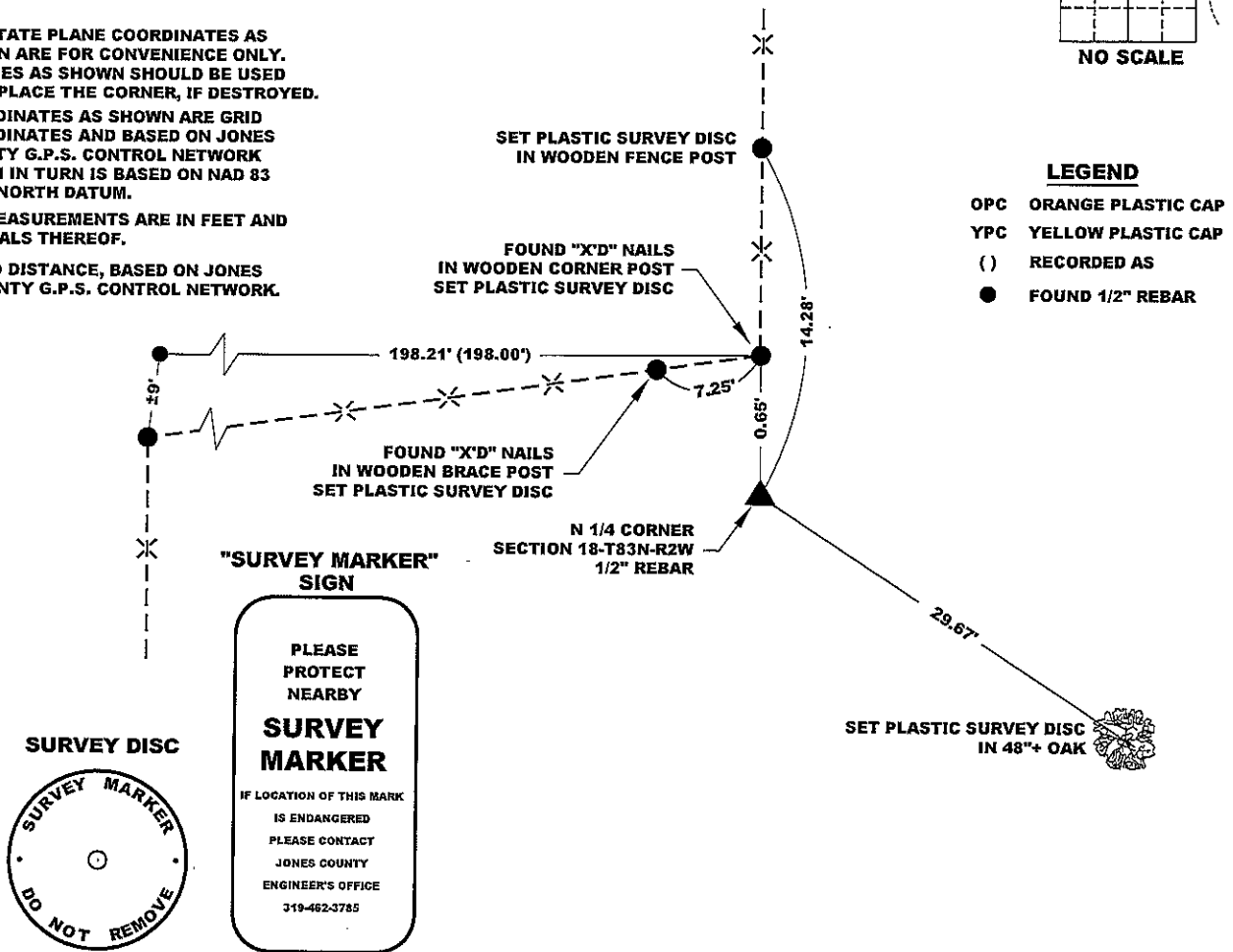
STATE PLANE COORDINATE
 NAD 83 IOWA NORTH
 N: 3474101.24
 E: 5567440.64

CORNER SECTION TOWNSHIP RANGE
 N 1/4 CORNER 18 83N 2W



NOTES:

- 1) THE STATE PLANE COORDINATES AS SHOWN ARE FOR CONVENIENCE ONLY. THE TIES AS SHOWN SHOULD BE USED TO REPLACE THE CORNER, IF DESTROYED.
- 2) COORDINATES AS SHOWN ARE GRID COORDINATES AND BASED ON JONES COUNTY G.P.S. CONTROL NETWORK WHICH IN TURN IS BASED ON NAD 83 IOWA NORTH DATUM.
- 3) ALL MEASUREMENTS ARE IN FEET AND DECIMALS THEREOF.
- 4) * GRID DISTANCE, BASED ON JONES COUNTY G.P.S. CONTROL NETWORK.



LEGEND

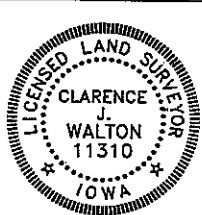
- OPC ORANGE PLASTIC CAP
- YPC YELLOW PLASTIC CAP
- () RECORDED AS
- FOUND 1/2" REBAR

PREVIOUSLY RECORDED IN N/A

PAGE 1 of 1

MONUMENT DESCRIPTION AND HOW ESTABLISHED FOUND 5/8" REBAR 3" ABOVE PRESENT EXISTING GROUND SURFACE PER PLAT OF SURVEY RECORDED IN PLAT BOOK F, PAGE 151. I AM PUZZLED WHY THERE IS NO MENTION OF AN OAK AS A BEARING TREE IN THE ORIGINAL GOVERNMENT SURVEY FIELD NOTES. A 48" DIAMETER OAK WOULD HAVE BEEN AT THE LEAST 10" IN DIAMETER BACK IN 1836. THERE IS JUST SO LITTLE EVIDENCE TO JUSTIFY PLACING THIS CORNER ANYWHERE ELSE THAN WHERE IT IS NOW. THE CURRENT PLACEMENT LOOKS AS THOUGH THE CORNER WAS SET AS TO AGREE WITH EXISTING FENCE LINES TO THE NORTH, EAST, AND WEST AND THIS IS THE BEST EVIDENCE THAT WE FOUND.

DATE OF SURVEY: 6/20/2012 FIELD BOOK: 381, PAGE 77.



I hereby certify that this land surveying document and the related survey work was performed by me or under my direct personal supervision and that I am a duly registered Land Surveyor under the laws of the State of Iowa.
 Signed: *Clarence J. Walton* 7/31/12
 Clarence J. Walton, L.S.
 My Registration Renewal Date is December 31, 2013
 Iowa License Number 11310
 Pages or sheets covered by this seal: 1 of 1.

- A. THERE IS NO CERTIFICATE FOR THE CORNER ON FILE WITH THE RECORDER OF THE COUNTY IN WHICH THE CORNER IS LOCATED.
- B. THE CORNER MONUMENT HAS BEEN REPLACED OR MODIFIED.
- C. THE SURVEYOR IN RESPONSIBLE CHARGE OF THE LAND SURVEYING ACCEPTS A CORNER POSITION THAT DIFFERS FROM THAT SHOWN IN THE PUBLIC RECORDS OF THE COUNTY IN WHICH THE CORNER IS LOCATED.
- D. THE REFERENCE TIES REFERRED TO IN AN EXISTING PUBLIC RECORD NO LONGER EXIST.

CORNERS TO BE INDEXED

CORNER	SECTION	TOWNSHIP	RANGE
N 1/4 CORNER	18	83N	2W
S 1/4 CORNER	7	83N	2W

JONES COUNTY ENGINEER'S OFFICE



19501 HWY. 64, ANAMOSA, IOWA 52205
 (319) 462-3785