

2001 1600
 FILED
 RECORDERS OFFICE
 JONES COUNTY IOWA
 01 MAY 15 AM 10:16
 MARIE KRUTZFIELD
 RECORDER No Fee

J.D. TJEPKES, LS. JONES COUNTY ENGINEER'S OFFICE, 19501 HWY. 64, ANAMOSA, IOWA, 52205 (319)462-3785

UNITED STATES PUBLIC LAND SURVEY CORNER CERTIFICATE

LAND SURVEY MONUMENTS SITUATED IN SECTION 1, TOWNSHIP 83
 NORTH, RANGE 2 WEST OF THE 5TH P.M., JONES COUNTY, IOWA

CORNERS TO BE INDEXED

CORNER	SECTION	TOWNSHIP	RANGE
EAST 1/4	1	83N	2W

OFFICE FILE NO. 83201o_041201

NOTE: ALL SLOPE DISTANCES

FOUND 5/8" IRON PIN 6" BELOW SURFACE IN C.L. ROAD. PER RECORDED TIES E-1/4 COR. 1-83-2

PREVIOUSLY RECORDED IN BOOK 334, PAGE 48

MONUMENT DESCRIPTION AND HOW ESTABLISHED FOUND 5/8" REBAR IN CENTERLINE OF ROAD, 6" BELOW SURFACE PER RECORDED TIES. SET NEW REFERENCE POINTS AND TIED OUT AS INDICATED. EAST QUARTER CORNER SEC. 1, TOWNSHIP 83 NORTH, RANGE 2 WEST, JONES COUNTY, IOWA

CORNERS TO BE INDEXED

CORNER	SECTION	TOWNSHIP	RANGE
NORTHEAST	1	83N	R2W

OFFICE FILE NO. 83201e_041201

PLASTIC SURVEY DISK IN FENCE POSTS

PREVIOUSLY RECORDED IN BOOK 334, PAGE 48

MONUMENT DESCRIPTION AND HOW ESTABLISHED FOUND 5/8" IRON PIN NORTH AND WEST OF ROAD PER RECORDED TIES SET NEW REFERENCE POINTS AND TIED OUT AS INDICATED. NORTHEAST CORNER OF SECTION 1, TOWNSHIP 83 NORTH, RANGE 2 WEST, JONES COUNTY, IOWA

CORNERS TO BE INDEXED

CORNER	SECTION	TOWNSHIP	RANGE
N-1/4	1	83N	2W

OFFICE FILE NO. 83201c_041201

SET SURVEY SIGN IN FENCE LINE

PREVIOUSLY RECORDED IN BOOK N/A, PAGE N/A

MONUMENT DESCRIPTION AND HOW ESTABLISHED SET 5/8" X 48" REBAR WITH CAP LS 14807 AT PROPORTIONATE DISTANCE BETWEEN NORTHEAST AND NORTHWEST SECTION CORNERS. SET REFERENCE POINTS AND TIED OUT AS INDICATED. N-1/4, SEC. 1, T83N, R2W. JONES COUNTY, IA.

CORNERS TO BE INDEXED

CORNER	SECTION	TOWNSHIP	RANGE
CENTER	1	83N	2W

OFFICE FILE NO. 83201m_041701

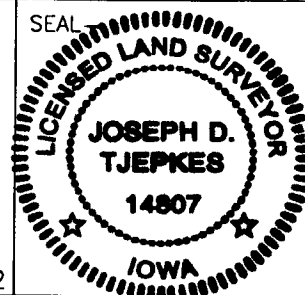
PREVIOUSLY RECORDED IN BOOK N/A, PAGE N/A

MONUMENT DESCRIPTION AND HOW ESTABLISHED SET 5/8" X 48" REBAR WITH CAP LS 14807 1.5' BELOW SURFACE. MONUMENT SET AT INTERSECTION OF CROSSED LINES FROM OPPOSITE QUARTER CORNERS. CENTER SECTION 1, TOWNSHIP 83 NORTH, RANGE 2 WEST, JONES COUNTY, IOWA

I hereby declare that this plat, survey or report was made by me or under my direct personal supervision and that I am a duly registered Land Surveyor under the laws of the State of Iowa.

Signed: *[Signature]* 5-14-01

Joseph D. Tjepkes L.S. Iowa Reg. No. 14807
 My Registration Renewal Date is December 31, 2002



J.D. TJEPKES LS 14807
 JONES COUNTY
 ENGINEER'S OFFICE

19501 HWY. 64,
 ANAMOSA, IOWA,
 52205 (319)462-3785

SECTION CORNER CERTIFICATE

OF
 LAND SURVEY MONUMENTS SITUATED IN SECTION 1, TOWNSHIP 83 NORTH,
 RANGE 2 WEST, OF THE FIFTH PRINCIPAL MERIDIAN, JONES, COUNTY, IOWA.

PREVIOUSLY RECORDED IN BOOK _____ AT PAGE _____.

FOR RECORDER'S USE

REASON FOR PREPARING CERTIFICATE:

- A) THERE IS NO CERTIFICATE FOR THE CORNER ON FILE WITH THE RECORDER OF THE COUNTY IN WHICH THE CORNER IS LOCATED.
- B) CORNER POSITION DIFFERS FROM THAT SHOWN IN THE PUBLIC RECORDS OF THE COUNTY IN WHICH THE CORNER IS LOCATED.
- C) THE CORNER MONUMENT HAS BEEN REPLACED OR MODIFIED.
- D) THE REFERENCE TIES REFERRED TO IN AN EXISTING PUBLIC RECORD ARE INCORRECT.

*B. 33 EJ
P. 48*

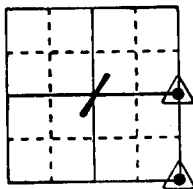
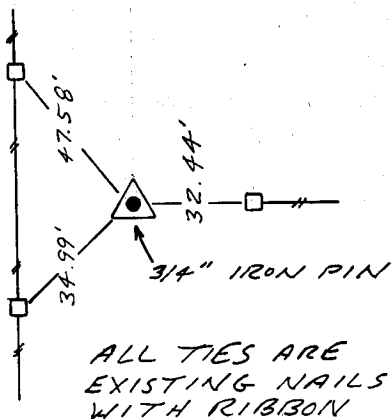
MONUMENT DESCRIPTION AND REMARKS :

FOUND 3/4" IRON PIN AT BOTH CORNER LOCATIONS SHOWN HERE.

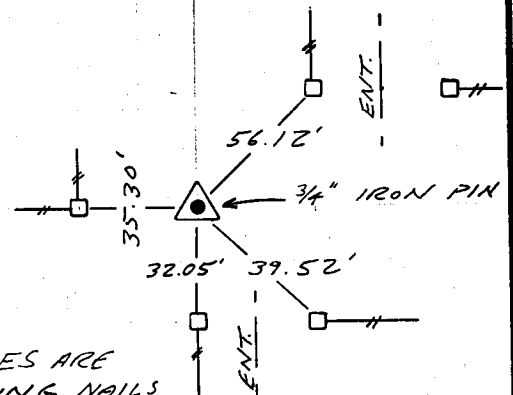
RECOVERY TIE DRAWING

NE COR. SE 1/4, 1-83-2

SE COR. SE 1/4, 1-83-2



NOT TO SCALE

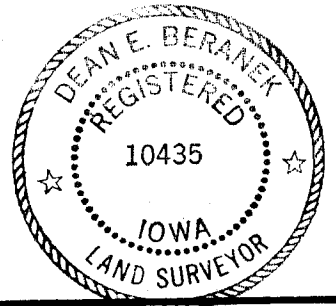


3-2-93 ON CARD E4 SEC 12 M.S.

3-2-93 ON CARD NE COR SEC. 12 M.S.

I, DEAN E. BERANEK, CERTIFY THAT THE CORNER LOCATION(S) SHOWN ON THIS RECORD WERE DETERMINED BY ME OR UNDER MY DIRECTION AND CONTROL AND THAT THIS U.S. PUBLIC LAND SURVEY MONUMENT RECORD IS CORRECT AND COMPLETE TO THE BEST OF MY KNOWLEDGE AND BELIEF.

Dean Beranek 2-23-93
 DEAN E. BERANEK L.S. NO 10435 DATE
 MY BIENNIAL REGISTRATION EXPIRES DECEMBER 31, 1993.



ORIGINAL 1/2"	GOVERNMENT CORNER 5/8" TIE PIN SET CENTERLINE EXISTING FENCE LINE R.O.W. LINE	SHEET TITLE: U.S. PUBLIC LAND SURVEY RECORD PROJECT TITLE: SECTION CORNER TIES	MMS CONSULTANTS, INC. Iowa City, Iowa 319-351-8282
	DATE: 1-25-93 SCALE: NONE	F. NO. 312 P. NO. 3405-001	