

# UNITED STATES PUBLIC LAND SURVEY CORNER CERTIFICATE

OF

Land Survey Monuments situated in Section One (1), Township 86 North, Range Two (2) West, of the Fifth Principal Meridian, Jones County, Iowa. Previously recorded in \_\_\_\_\_ in County Recorder's Office.

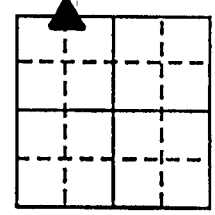
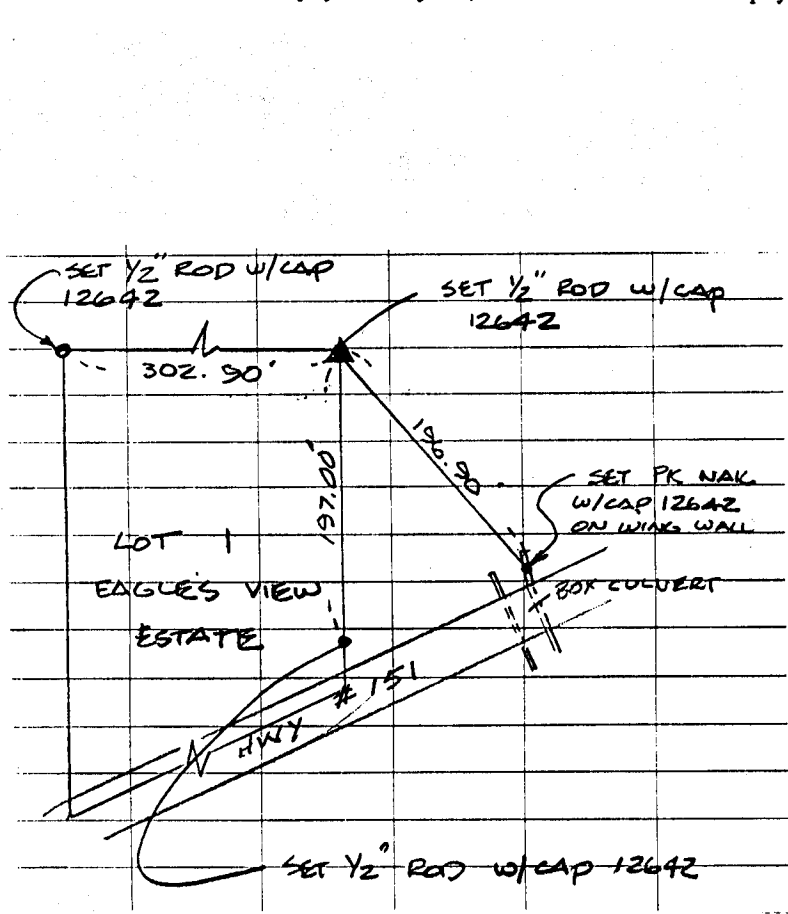
(book, page, document number, etc.)

(Show reason for preparing this certificate, the evidence and detailed procedures used in establishing the corner positions and monumentation found or placed.)

Monument Description and Remarks: No Certificate recorded in the Office of the County Recorder. Set Corner on line and midway between the Northwest Corner and the North Quarter Corner of said Section One (1), T86N, R2W of the Fifth P.M.

### PLAN - VIEW

(Show a minimum of three reference ties to durable physical objects, relevant monuments and physical conditions that will enable recovery of the corner.)



SECTION 1  
T86N, R2W



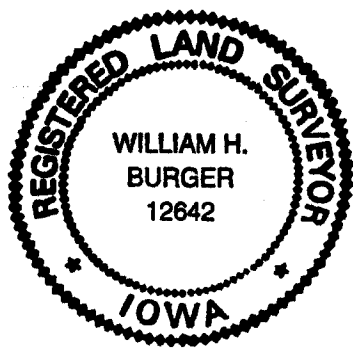
DATE OF FIELD WORK: 10/12/93 & 1/7/94

TSE NO: 93-61

I hereby certify that the survey work was completed and this certificate was prepared by me or under my direct personal supervision and that I am a duly registered land surveyor under the laws of the state of Iowa.

Signature: William H. Burger  
Name typed or printed: William H. Burger  
Date: 1/25/94 Reg. No. 12642

Corners	List Corners to be Indexed		
	Section	Twp	Range
NE of NW¼ NW¼	1	T86N	R2W



SEAL