

**UNITED STATES PUBLIC LAND SURVEY CORNER CERTIFICATE**

Land Survey Monuments situated in Section 24, Township 83N, Range 2W, of the Fifth Principal Meridian, Jones County, Iowa. Previously recorded in 2007 0400 in the Office of the County Recorder

Monument Description and Remarks:

NE CORNER - FD. 1/2" IRON ROD W/RED MARRED LS CAP

-----

-----

-----

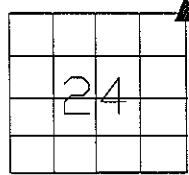
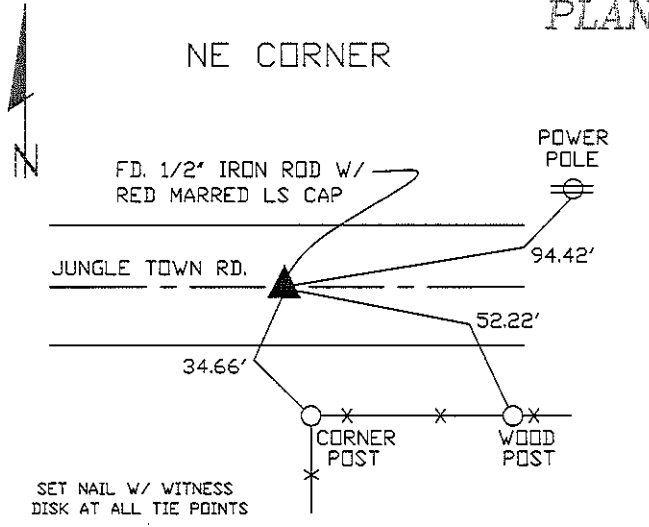
-----

-----

-----

-----

**PLAN VIEW**



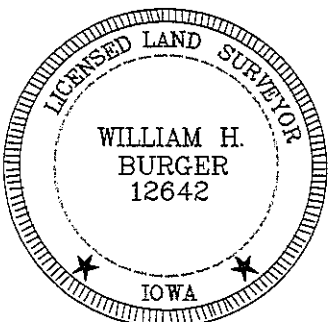
SEC. 24 TWP. 83N RANGE 2W

CORNERS TO BE INDEXED

NE CORNER \_\_\_\_\_ 24 83N 2W

\_\_\_\_\_

\_\_\_\_\_



I hereby certify that this land surveying document was prepared and related survey work was performed by me or under my direct personal supervision and that I am a duly licensed Land Surveyor under the laws of the State of Iowa.

*William H. Burger* 12/03/09  
 William H. Burger Date  
 License number 12642  
 My license renewal date is December 31, 2010  
 Pages or Sheets covered by this seal: Sheet 1 of 1

# SECTION CORNER CERTIFICATE

OF  
 LAND SURVEY MONUMENTS SITUATED IN SECTION 19, TOWNSHIP 83 NORTH,  
 RANGE 1 WEST, OF THE FIFTH PRINCIPAL MERIDIAN, JONES, COUNTY, IOWA.

PREVIOUSLY RECORDED IN BOOK \_\_\_\_\_ AT PAGE \_\_\_\_\_ .

FOR RECORDER'S USE

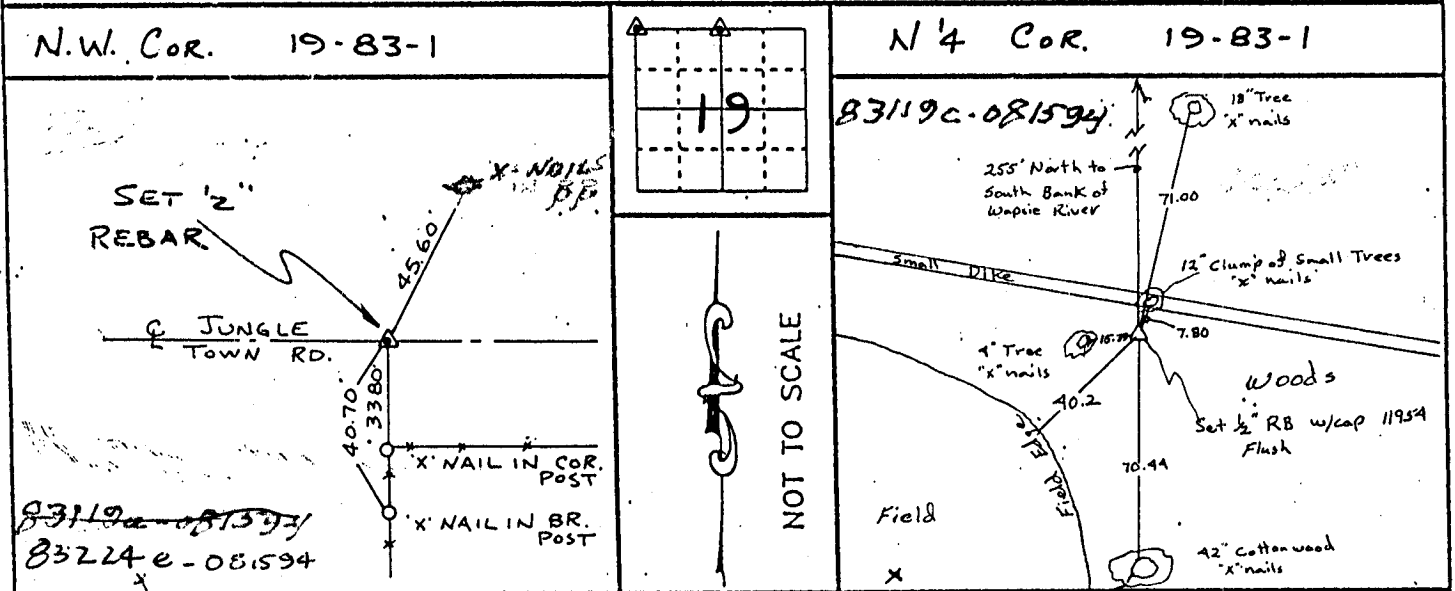
**REASON FOR PREPARING CERTIFICATE:**

- A) THERE IS NO CERTIFICATE FOR THE CORNER ON FILE WITH THE RECORDER OF THE COUNTY IN WHICH THE CORNER IS LOCATED.
- B) CORNER POSITION DIFFERS FROM THAT SHOWN IN THE PUBLIC RECORDS OF THE COUNTY IN WHICH THE CORNER IS LOCATED.
- C) THE CORNER MONUMENT HAS BEEN REPLACED OR MODIFIED.
- D) THE REFERENCE TIES REFERRED TO IN AN EXISTING PUBLIC RECORD ARE INCORRECT.

**MONUMENT DESCRIPTION AND REMARKS:**

N.W. CORNER SECTION 19-T83N-R1W SET 1/2" REBAR W/CAP  
 # 11954 ON E JUNGLE COUNTY ROAD 2" DEEP  
 N/4 CORNER SECTION 19-T83N-R1W SET 1/2" REBAR W/CAP  
 # 11954

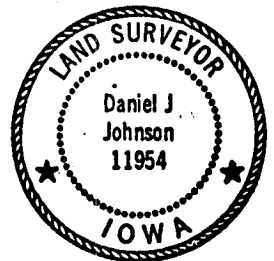
## RECOVERY TIE DRAWING



ON Card NE Corner Sec. 24 T83N R2W (Hale)  
 11-29-94 PR

I, DANIEL J. JOHNSON, CERTIFY THAT THE CORNER LOCATION(S) SHOWN ON THIS RECORD WERE DETERMINED BY ME OR UNDER MY DIRECTION AND CONTROL AND THAT THIS U.S. PUBLIC LAND SURVEY MONUMENT RECORD IS CORRECT AND COMPLETE TO THE BEST OF MY KNOWLEDGE AND BELIEF.

*Daniel Johnson* 8-15-94  
 DANIEL J. JOHNSON L.S. NO 11954 DATE



<p><b>LEGEND</b></p> <p>▲ GOVERNMENT CORNER</p> <p>○ 5/8" TIC PIN SET</p> <p>— CONTROL LINE</p> <p>- - - EXISTING FENCE LINE</p> <p>--- R.O.W. LINE</p>	<p>SHEET NO. _____</p> <p><b>U.S. PUBLIC LAND SURVEY RECORD</b></p> <p>PROJECT NO. _____</p> <p><b>JONES Co. PROJECT No. FM 53 (55)--55-53</b></p>	<p><b>HALL AND HALL ENGINEERS, INC.</b></p> <p>226 29TH STREET DRIVE S.E.</p> <p>CEDAR RAPIDS, IOWA 52403</p> <p>319-362-9548</p>				
<p>D W N <b>RWB</b></p>	<p>C H K <b>DJJ</b></p>	<p>A P P</p>	<p>D A T E <b>3-2-93</b></p>	<p>SCALE <b>NONE</b></p>	<p>P. NO. <b>OT 27</b></p>	<p>R. NO. <b>47.16</b></p>

83224e-081594 11-29-94 ON Card