

Instrument #: 2015-1076
 04/21/2015 12:02:24 PM Total Pages: 1
 ZSC SECTION CORNER CERTIFICATE
 Recording Fee: \$7.00 Transfer Tax: \$0
 Marie Krutzfield, Recorder, Jones County Iowa



PREPARED BY: MICHAEL J. WEBER, WEBER SURVEYING, LLC, 26789 46TH AVE, BERNARD, IA 52032 (563) 879-4173

UNITED STATES PUBLIC LAND SURVEY CORNER CERTIFICATE OF

LAND SURVEY MONUMENTS SITUATED IN SECTION 24, TOWNSHIP 83 NORTH, RANGE 2 WEST OF THE FIFTH PRINCIPAL MERIDIAN, JONES COUNTY, IOWA.
 PREVIOUSLY RECORDED NONE UNLESS NOTED BELOW

(book, page, document number, etc)

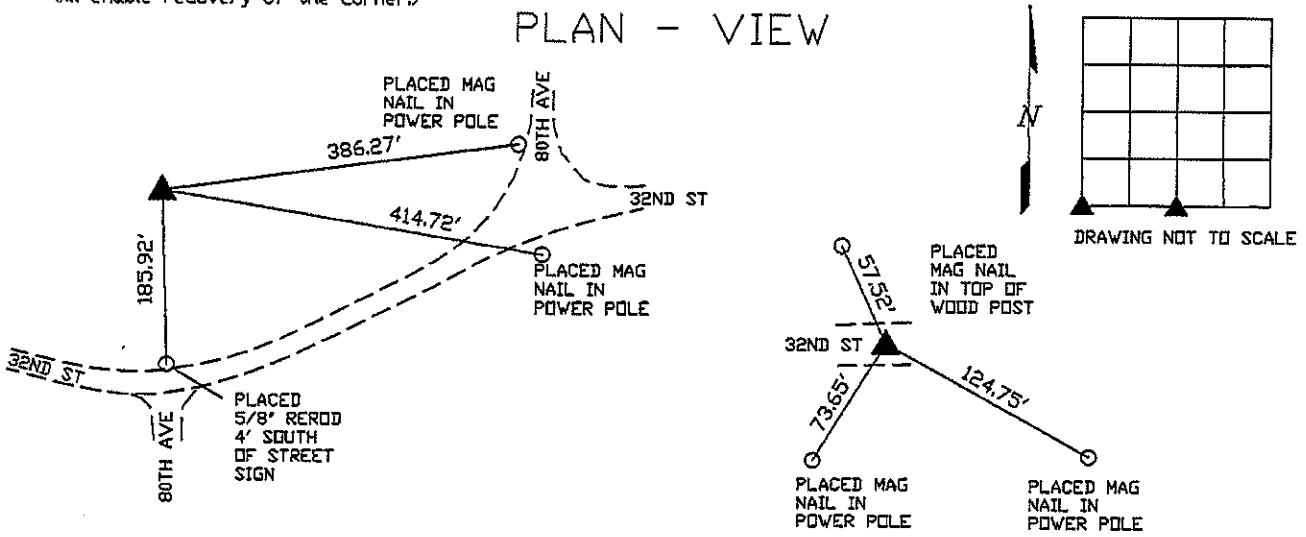
(Show reason for preparing this certificate, the evidence and detailed procedures used in establishing the corner positions and monumentation found or placed.)

Monument Description and Remarks:

- SW COR., SEC. 24, T.83N, R.2W. OF THE 5TH P.M. PLACED A 5/8" REROD W/ORANGE CAP NO. 15084. ESTABLISHED CORNER AT THE EXTENDED INTERSECTIONS OF 80TH AVENUE FROM THE SOUTH AND 32ND STREET FROM THE EAST
- SOUTH 1/4 COR., SEC. 24, T.83N, R.2W. OF THE 5TH P.M. PLACED A 5/8" REROD W/ORANGE CAP NO. 15084. ESTABLISHED CORNER MIDWAY BETWEEN THE SW AND SE CORNER OF SECTION 24 IN THE CENTER OF 32ND STREET.

(Show a minimum of three reference ties to durable physical objects, relevant monuments and physical conditions that will enable recovery of the corner.)

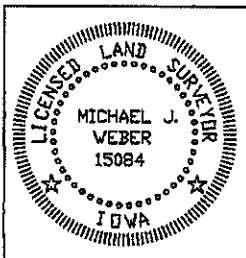
PLAN - VIEW



SW COR., SEC. 24, T.83N, R.2W. OF THE 5TH P.M. PLACED A 5/8" REROD W/ORANGE CAP NO. 15084

SOUTH 1/4 COR., SEC. 24, T.83N, R.2W. OF THE 5TH P.M. PLACED A 5/8" REROD W/ORANGE CAP NO. 15084

DWG. NO. 14040-AHRENDSEN



I HEREBY CERTIFY THAT THIS LAND SURVEYING DOCUMENT WAS PREPARED AND THE RELATED SURVEY WORK WAS PERFORMED BY ME OR UNDER MY DIRECT PERSONAL SUPERVISION AND THAT I AM A DULY LICENSED LAND SURVEYOR UNDER THE LAWS OF THE STATE OF IOWA.

Michael J. Weber April 21, 2015
 MICHAEL J. WEBER (DATE)

LICENSE NUMBER 15084
 MY LICENSE RENEWAL DATE IS DECEMBER 31, 2015

SHEETS COVERED BY THIS SEAL : THIS SHEET

List Corners to be Indexed		
Corner	Sec	Twp Range
SW COR	24	83N 2W
SOUTH 1/4 COR	24	83N 2W