

SECTION CORNER CERTIFICATE

OF

LAND SURVEY MONUMENTS SITUATED IN SECTION 27, TOWNSHIP 83 NORTH,
RANGE 2 WEST, OF THE FIFTH PRINCIPAL MERIDIAN, JONES, COUNTY, IOWA.

PREVIOUSLY RECORDED IN BOOK _____ AT PAGE _____.

FOR RECORDER'S USE

REASON FOR PREPARING CERTIFICATE:

- A) THERE IS NO CERTIFICATE FOR THE CORNER ON FILE WITH THE RECORDER OF THE COUNTY IN WHICH THE CORNER IS LOCATED.
- B) CORNER POSITION DIFFERS FROM THAT SHOWN IN THE PUBLIC RECORDS OF THE COUNTY IN WHICH THE CORNER IS LOCATED.
- C) THE CORNER MONUMENT HAS BEEN REPLACED OR MODIFIED.
- D) THE REFERENCE TIES REFERRED TO IN AN EXISTING PUBLIC RECORD ARE INCORRECT.

MONUMENT DESCRIPTION AND REMARKS :

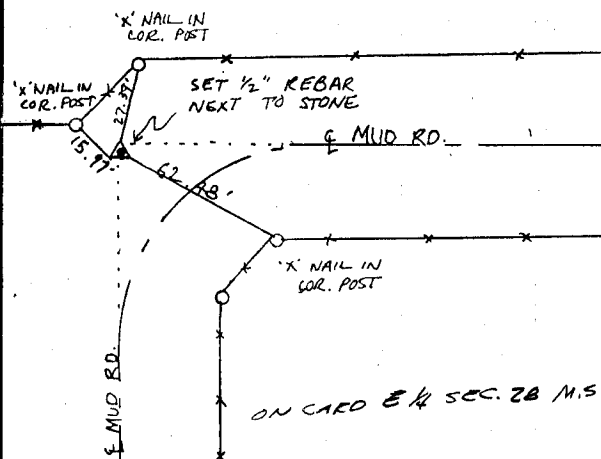
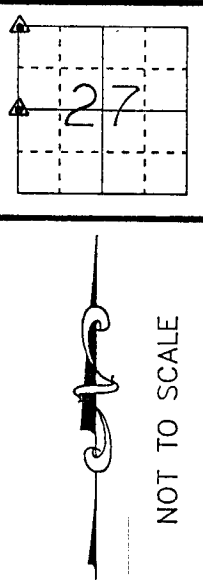
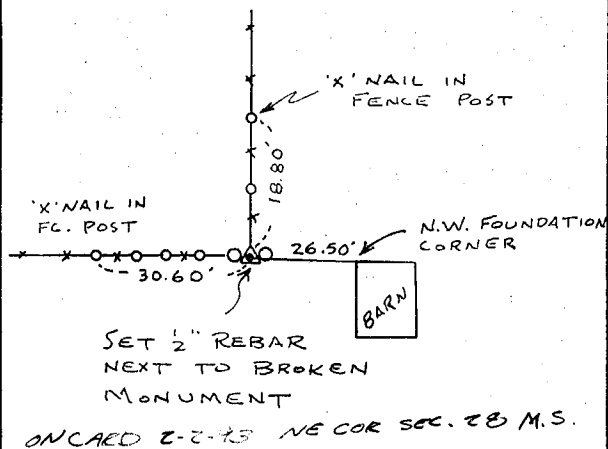
N.W. CORNER SECTION 27, T83N, R2W FOUND CONC. MONUMENT (BROKEN) BETWEEN TWO CORNER POST SET 1/2" REBAR ALONG WEST SIDE OF MONUMENT

W'4 CORNER SECTION 27-T83N-R2W FOUND GRANITE STONE SET 1/2" REBAR ALONG WEST SIDE OF STONE IN LINE W/ E MUD ROAD SOUTH ← IN LINE W/ G MUD ROAD EAST

RECOVERY TIE DRAWING

N.W. Cor. 27-83-2

W'4 Cor. 27-83-2



I, GLEN D. MEISNER, CERTIFY THAT THE CORNER LOCATION(S) SHOWN ON THIS RECORD WERE DETERMINED BY ME OR UNDER MY DIRECTION AND CONTROL AND THAT THIS U.S. PUBLIC LAND SURVEY MONUMENT RECORD IS CORRECT AND COMPLETE TO THE BEST OF MY KNOWLEDGE AND BELIEF.



Glen D. Meisner 12-30-92
GLEN D. MEISNER L.S. NO 8165 DATE

DZMONT	<input type="checkbox"/> GOVERNMENT CORNER	SHEET TITLE: U.S. PUBLIC LAND SURVEY RECORD	H	HALL AND HALL ENGINEERS, INC. 226 29TH STREET DRIVE S.E. CEDAR RAPIDS, IOWA 52403 319-362-9548
	<input type="checkbox"/> 5/8" TIE PIN SET	PROJECT TITLE: DALE WENDT SURVEY		
	<input type="checkbox"/> CENTERLINE			
	<input type="checkbox"/> EXISTING FENCE LINE			
	<input type="checkbox"/> R.O.W. LINE			
D W N	R.W.B.	C H K	G.D.M.	A P P
		D A T E	6-26-92	S C A L E
			N O N E	F N O
				B O T 2 5
				P N O
				P R O J
				4703