

### UNITED STATES PUBLIC LAND SURVEY CORNER CERTIFICATE

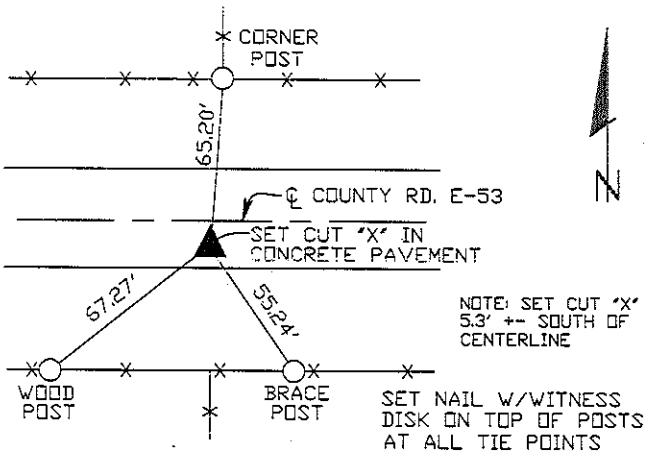
Land Survey Monuments situated in Section 32, Township 83N, Range 2W, of the Fifth Principal Meridian, Jones County, Iowa. Previously recorded in N/A in the Office of the County Recorder

Monument Description and Remarks: (No Corner Certificates found at the County Recorders Office)

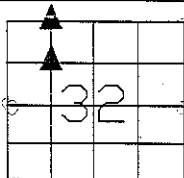
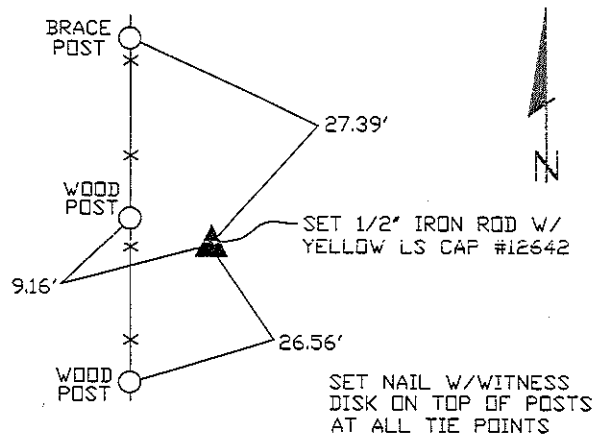
NW CORNER NE1/4 NW1/4 - SET CUT "X" IN CONCRETE PAVEMENT - SET ONLINE AND MIDWAY BETWEEN THE NW CORNER AND THE N1/4 CORNER

SW CORNER NE1/4 NW1/4 - SET 1/2" IRON ROD W/YELLOW LS CAP #12642 - RUN STRAIGHT LINES FROM OPPOSITE 1/4 1/4 CORNERS AND SET AT POINT OF INTERSECTION

#### NW CORNER NE1/4 NW1/4 PLAN VIEW



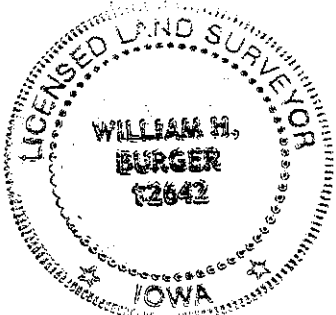
#### SW CORNER NE1/4 NW1/4



SEC. 32 TWP. 83N RANGE 2W

#### CORNERS TO BE INDEXED

NW CORNER NE1/4 NW1/4	32	83N	2W
SW CORNER NE1/4 NW1/4	32	83N	2W



I hereby certify that this land surveying document was prepared and related survey work was performed by me or under my direct personal supervision and that I am a duly licensed Land Surveyor under the laws of the State of Iowa.

*William H. Burger* 2/27/09  
Date

William H. Burger  
License number 12642

My license renewal date is December 31, 2010

Pages or Sheets covered by this seal: Sheet 1 of 1