

2005 4531

FILED
RECORDERS OFFICE
JONES COUNTY IOWA

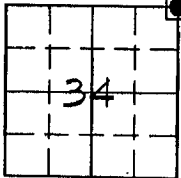
05 DEC 16 AM 11:43^z

MARIE KRUTZFIELD
RECORDER 7:00 PM

HALE

Prepared by: Richard Kordick, P.E., L.S., 120 East Main, Suite D, Anamosa, Iowa 52205 (319)462-4498

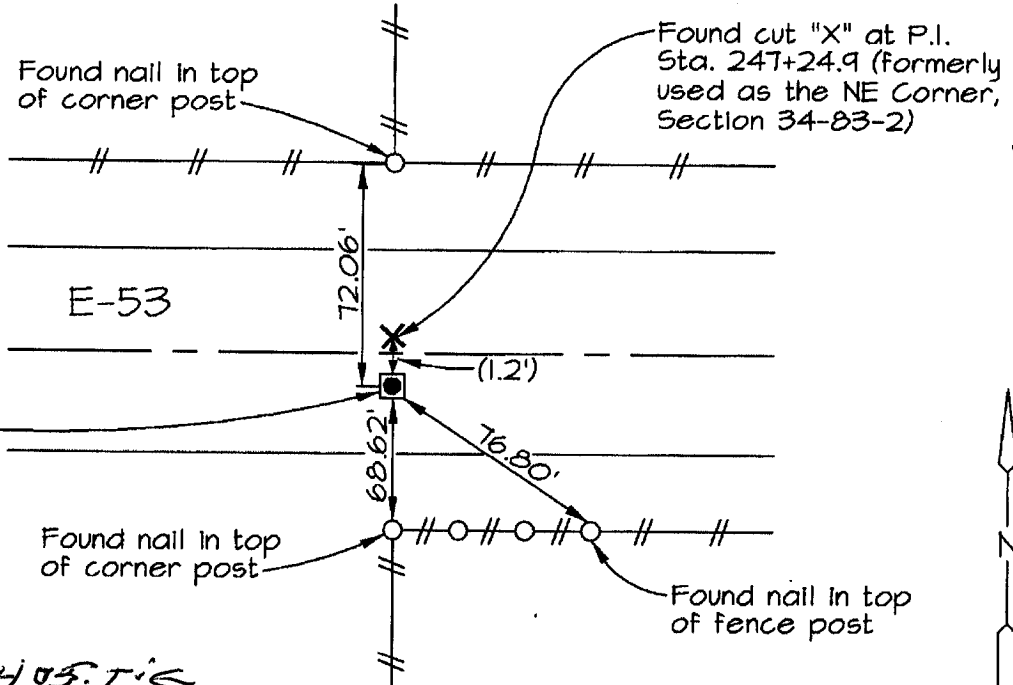
U.S. PUBLIC LAND SURVEY CORNER CERTIFICATE



34-83N-2W
Jones County
HALE Township

NE Corner
Section 34-83-2
Set pk nail, ±0.8'
south of centerline

1777



83234e - 12/4/05 tie

Plan-View No Scale

Section corner location: NE Corner, Section 34-83-2

Reason for corner tie:

- A) There is no certificate for the corner on file with the recorder.
- B) Corner position differs from previously recorded certificate recorded in book , page
- C) Corner monument was replaced or modified.
- D) Reference ties in previously recorded certificate recorded in book , page are incorrect or missing.

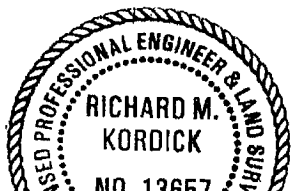
Research at the recorder's office, auditor's office, and engineer's office revealed the following: A plat in Recorder's Plat Bk. 1 - Pg. 23 called for a "pk nail set". A plat in Recorder's Plat Bk. M - Pg. 88 stated "NE Corner, Section 34-83-2, Fnd. "X", 0.3'N of Sta. 247+24.9." This cut "X" is at the P.I. Sta. 247+24.9 location and is NOT the NE Corner as it was incorrectly used in this plat. Easements for Public Highway in Recorder's Bk. 120 - Pg. 315 and Bk. 175 - Pg. 91 called for Sta. 247+24.9 being 1' north of the NE Corner of Section 34. An Easement for Public Highway in Recorder's Bk. 175 - Pg. 59 called for Sta. 247+24.9 being 1.2' north of the NE Corner of Section 34.

Field search performed as follows:

Field search was performed with a metal detector and visual observation. Nothing was found.

Monument found or set:

A pk nail was set and used as the corner.



I hereby certify that this land surveying document was prepared and the related survey work was performed by me or under my direct personal supervision and that I am a duly licensed Land Surveyor under the laws of the State of Iowa.

Richard M. Kordick 12/14/2005

LEGEND:

- Section Corner as noted
- ⊕ Power Pole
- Section line