

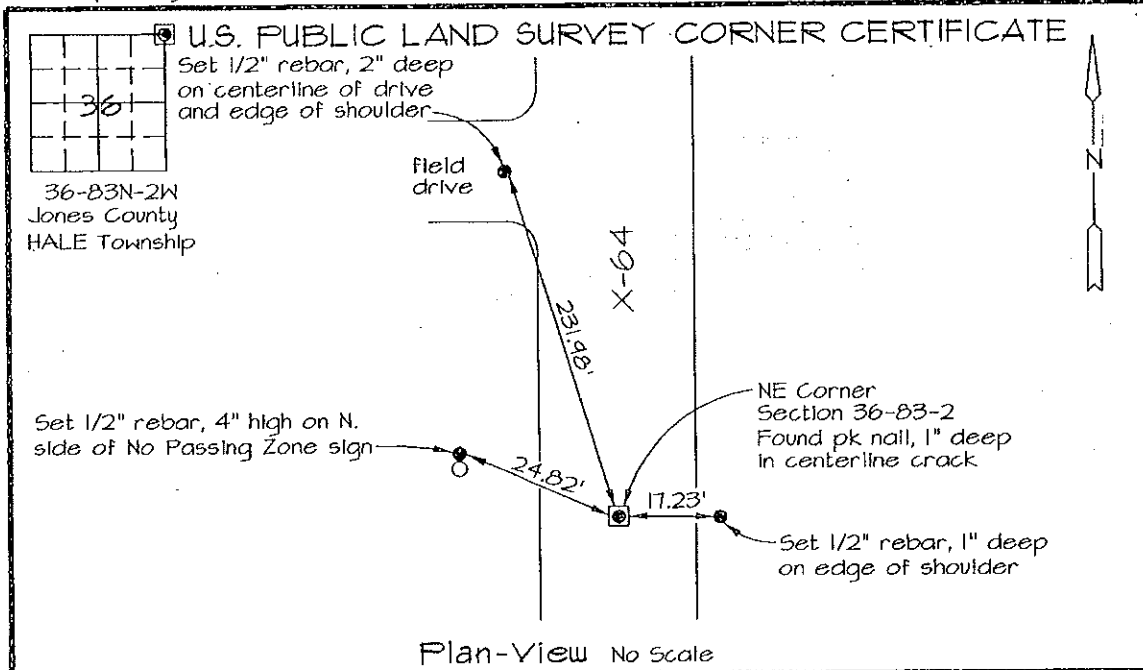
2006 2934

FILED  
RECORDERS OFFICE  
JONES COUNTY IOWA

06 AUG -3 AM 10:54

MAIRIE KRUTZFELD  
RECORDER 7.00 pd

Prepared by: Richard M. Kordick, P.E., L.S., 120 East Main, Suite D, Anamosa, IA 52205 Phone: (319) 462-4498



Section corner location: NE Corner, Section 36-83-2

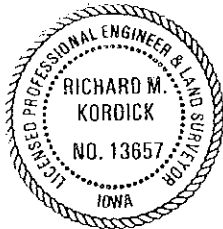
Reason for corner tie:

- A) There is no certificate for the corner on file with the recorder.
- B) Corner position differs from previously recorded certificate recorded in book , page
- C) Corner monument was replaced or modified.
- D) Reference ties in previously recorded certificate recorded in book , page are incorrect or missing.

Research at the recorder's office, auditor's office, and engineer's office, revealed the following:  
A plat in Recorder's Office Plat Bk. H - Pg. 71 called for a set pk nail at this corner.

Field search performed was as follows:  
Field search was performed with a metal detector.

Monument found or set:  
A pk nail was found as per plat in Recorder's Office Plat Bk. H - Pg. 71 and used as the corner.



I hereby certify that this land surveying document was prepared and the related survey work was performed by me or under my direct personal supervision and that I am a duly licensed Land Surveyor under the laws of the State of Iowa.

*Richard M. Kordick* 7/28/2006  
Richard M. Kordick  
License number 13657  
My license renewal date is December 31, 2007.  
Pages or sheets covered by this seal: 1 of 1

LEGEND:

- Section Corner as noted
- ⊕ Power Pole
- Section line
- Centerline
- — — Existing Fence
- ( ) Recorded Dist.

Kordick Surveying  
& Engineering  
120 East Main, Suite D  
Anamosa, Iowa 52205  
(319) 462-4498

U.S. Public Land  
Survey Corner Certificate  
Project: Plat of Survey  
Parcel No. 2006-107  
Proprietor: Alfred F. Christophersen

Field BK  
06067  
Date  
7-28-06  
Job No.  
06067  
Sheet  
1 of 1