

FILED  
RECORDERS OFFICE  
JONES COUNTY IOWA

05 APR -6 PM 4:16

MARIE KRUTZFIELD  
RECORDER 7.00 pd

J.D. TJEPKES, LS. 14807, 23428 RIDGE ROAD, ANAMOSA, IOWA, 52205 (319-462-6067)

# UNITED STATES PUBLIC LAND SURVEY CORNER CERTIFICATE

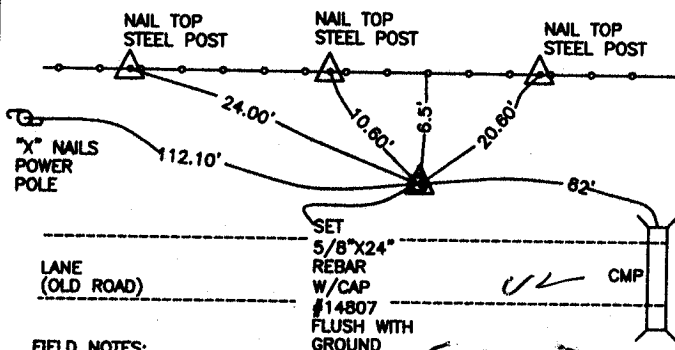
LAND SURVEY MONUMENTS SITUATED IN SECTION 34, TOWNSHIP 84  
NORTH, RANGE 2 WEST OF THE 5TH P.M., JONES COUNTY, IOWA

### CORNERS TO BE INDEXED

CORNER SECTION TOWNSHIP RANGE  
SE COR 34 84N 2W  
OFFICE FILE NO.



84234Y-040505.tib

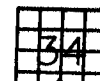


FIELD NOTES:  
10-24-2004  
BK 2004  
P 153

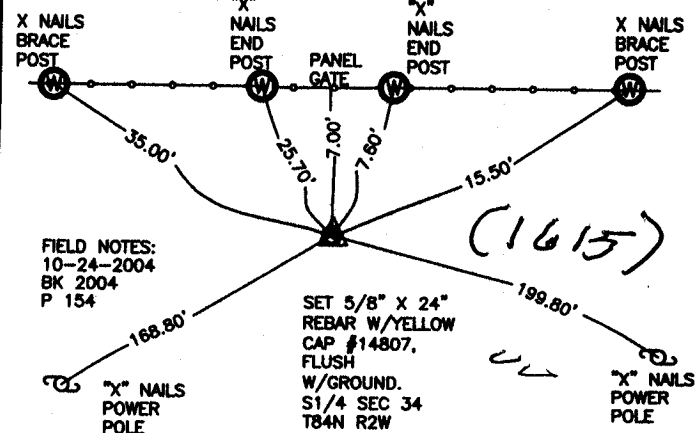
PREVIOUSLY RECORDED IN BOOK NA, PAGE NA  
MONUMENT DESCRIPTION AND HOW ESTABLISHED  
PER PROPORTIONATE DISTANCE AND ON LINE FROM FOUND REBAR AT NE CORNER SEC.4 T83N R2W, AND FOUND REBAR AT SE-SW-SW CORNER SEC. 35 T84N R2W, SET 5/8" X 24" REBAR WITH YELLOW CAP # 14807 FLUSH WITH GROUND. SE CORNER SECTION 34 T84N R2W. TIES AS INDICATED.

### CORNERS TO BE INDEXED

CORNER SECTION TOWNSHIP RANGE  
E1/4 COR 34 84N 2W  
OFFICE FILE NO.



84234W-040505.tib



FIELD NOTES:  
10-24-2004  
BK 2004  
P 154

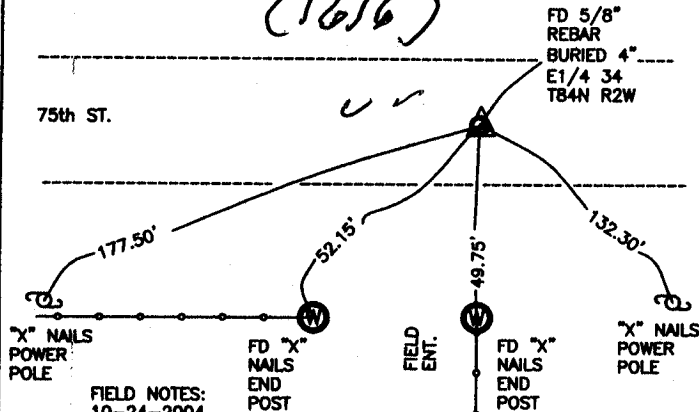
PREVIOUSLY RECORDED IN BOOK NA, PAGE NA  
MONUMENT DESCRIPTION AND HOW ESTABLISHED  
PER PROPORTIONATE DISTANCE AND ON LINE FROM FOUND REBAR AT NE CORNER SEC.4 T83N R2W, AND FOUND REBAR AT SE-SW-SW CORNER SEC. 35 T84N R2W, SET 5/8" X 24" REBAR WITH YELLOW CAP # 14807 FLUSH WITH GROUND. S1/4 CORNER SECTION 34 T84N R2W. TIES AS INDICATED.

### CORNERS TO BE INDEXED

CORNER SECTION TOWNSHIP RANGE  
E1/4 COR 34 84N 2W  
OFFICE FILE NO.



842340-040505.tib  
(1616)



FIELD NOTES:  
10-24-2004  
BK 2004  
P 155

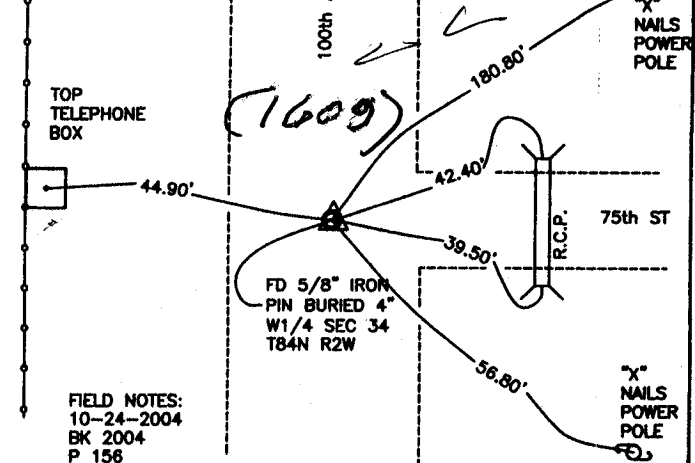
PREVIOUSLY RECORDED IN BOOK NA, PAGE NA  
MONUMENT DESCRIPTION AND HOW ESTABLISHED  
PER PHYSICAL EVIDENCE, FOUND 5/8" REBAR IN CENTER OF ROAD AND ON LINE WITH FENCE LINE SOUTH. E1/4 SECTION 34 T84N R2W. TIES AS INDICATED.

### CORNERS TO BE INDEXED

CORNER SECTION TOWNSHIP RANGE  
W1/4 COR 34 84N 2W  
OFFICE FILE NO.



842330-040505.tib



FIELD NOTES:  
10-24-2004  
BK 2004  
P 156

PREVIOUSLY RECORDED IN BOOK NA, PAGE NA  
MONUMENT DESCRIPTION AND HOW ESTABLISHED  
PER PHYSICAL EVIDENCE AT INTERSECTION OF 100th AVE AND 75th ST, FOUND 5/8" IRON PIN BURIED 4". W1/4 SECTION 34 T84N R2W. TIES AS INDICATED.

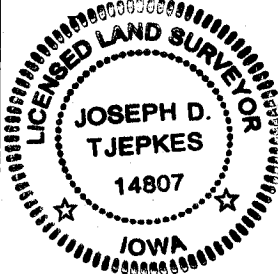
I hereby declare that this plat, survey or report was made by me or under my direct personal supervision and that I am a duly registered Land Surveyor under the laws of the State of Iowa.

Signed:

*[Signature]* 4.05.05

Joseph D. Tjepkes L.S. Iowa Reg. No. 14807  
My Registration Renewal Date is December 31, 2006

SEAL



J.D. TJEPKES LS 14807  
23428 RIDGE ROAD  
ANAMOSA, IOWA, 52205  
(319-462-3785)