

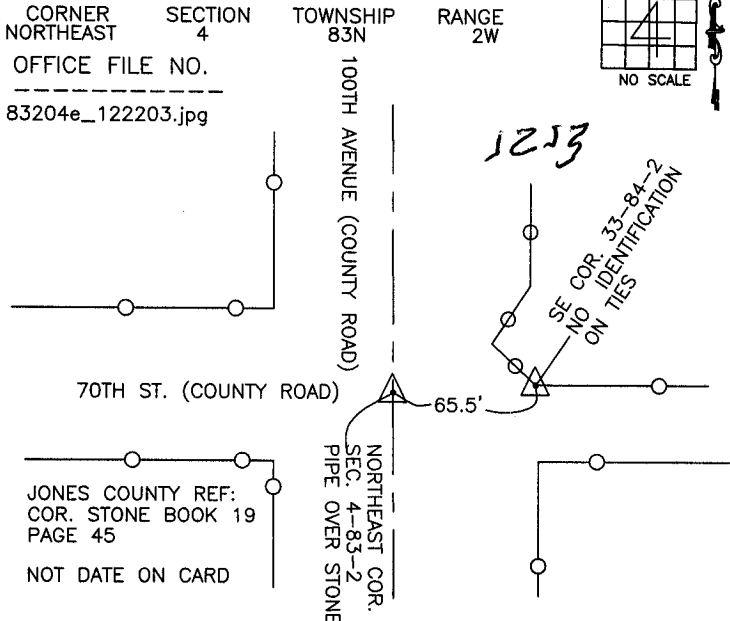
THIS IS NOT A CERTIFICATION

JONES COUNTY ENGINEER'S OFFICE, 19501 HWY. 64, ANAMOSA, IOWA, 52205 (319)462-3785

UNITED STATES PUBLIC LAND SURVEY CORNER CERTIFICATE

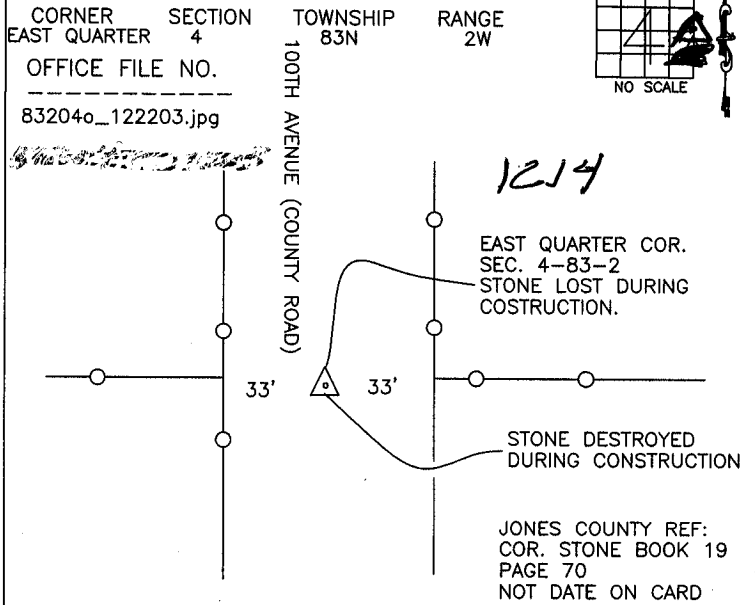
LAND SURVEY MONUMENTS SITUATED IN SECTION 4, TOWNSHIP 83
NORTH, RANGE 2 WEST OF THE 5TH P.M., JONES COUNTY, IOWA

CORNERS TO BE INDEXED



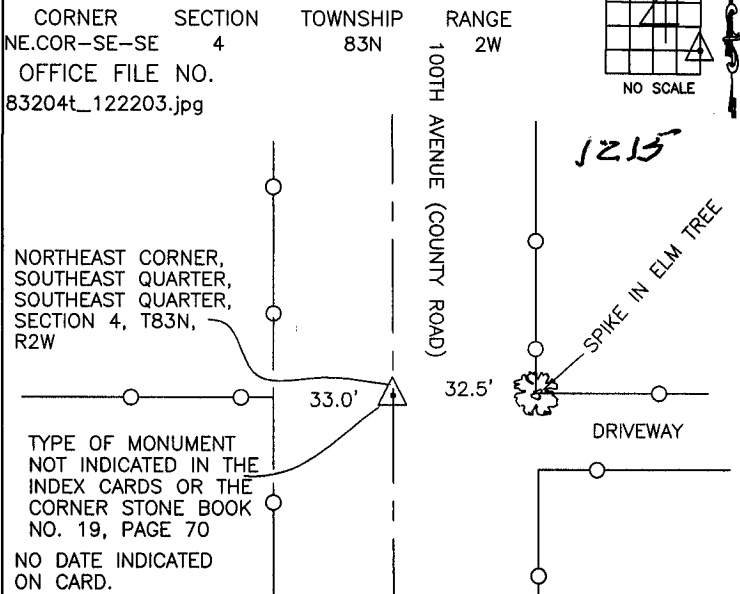
PREVIOUSLY RECORDED IN BOOK _____, PAGE _____
MONUMENT DESCRIPTION AND HOW ESTABLISHED _____
INDICATED ON INDEX CARD TIES. GAS PIPE OVER STONE, STONE
BURIED UNDER DEEP FILL, (MAIN ROAD N-S) MONUMENT FOR THE
SE OF SEC. 33 NOT IDENTIFIED. NORTHEAST CORNER SEC. 4,
TOWNSHIP 83N, R2W OF THE 5TH PM, JONES COUNTY, IOWA.

CORNERS TO BE INDEXED



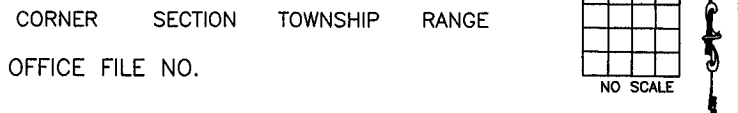
PREVIOUSLY RECORDED IN BOOK _____, PAGE _____
MONUMENT DESCRIPTION AND HOW ESTABLISHED _____
INDEX CARD INDICATES STONE DESTROYED DURING CONSTRUCTION
WITH NO REPLACEMENT. EAST QUARTER OF SECTION 4, T83N, R2W.
JONES COUNTY, IOWA.

CORNERS TO BE INDEXED



PREVIOUSLY RECORDED IN BOOK _____, PAGE _____
MONUMENT DESCRIPTION AND HOW ESTABLISHED _____ TYPE OF
MONUMENT NOT INDICATED IN THE INDEX CARDS OR CORNER
STONE BOOK 19, PAGE 70. NORTHEAST CORNER OF THE SOUTHWEST
QUARTER OF THE SOUTHWEST QUARTER OF SECTION 4, TOWNSHIP
83 NORTH, RANGE 2 WEST OF THE 5TH PRINCIPAL MERIDIAN,
JONES COUNTY, IOWA.

CORNERS TO BE INDEXED



PREVIOUSLY RECORDED IN BOOK _____, PAGE _____
MONUMENT DESCRIPTION AND HOW ESTABLISHED _____

~~I hereby declare that this plat, survey or report was made by me or under my direct personal supervision and that I am a duly registered Land Surveyor under the laws of the State of Iowa.~~

Signed: _____

SEAL

JONES COUNTY
ENGINEER'S OFFICE

19501 HWY. 64,
ANAMOSA, IOWA,
52205 (319)462-3785