

Instrument #: 2018-2790  
 10/11/2018 11:06:34 AM Total Pages: 1  
 ZSC SECTION CORNER CERTIFICATE  
 Recording Fee: \$7.00 Transfer Tax: \$0  
 Sheri L. Jones, Recorder, Jones County Iowa



RETURN TO &  
 PREPARED BY: LEO P. BONIFAZI SCHNOOR-BONIFAZI ENGINEERING & SURVEYING LC, 431 FIFTH AVENUE SW, CEDAR RAPIDS, IA 52404 319-298-8888

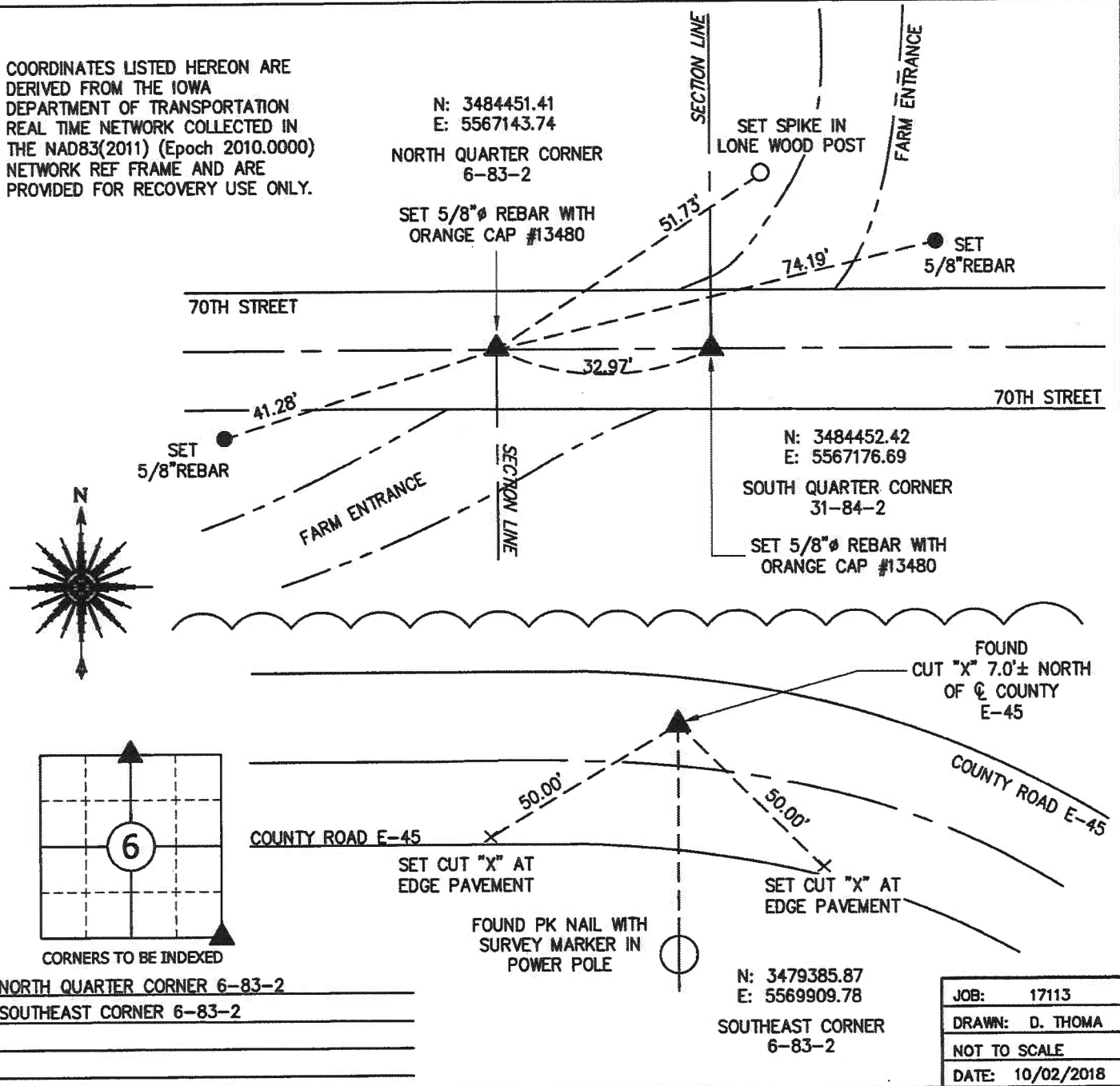
**UNITED STATES PUBLIC LAND SURVEY CORNER CERTIFICATE**

Land Survey Monuments Situated in Section 6, Township 83 North, Range 2 West of the Fifth Principal Meridian, JONES County, Iowa.  
 Reason for filing:  a. No certificate of record found.  b. Monument or ties found differ from record.  c. Replaced section corner.

**NORTH QUARTER CORNER - NO CORNER CERTIFICATE FOUND AT COUNTY RECORDER'S OR ENGINEER'S OFFICE. NOTHING FOUND SEARCH OF CALCULATED LOCATION. ESTABLISHED LOCATION BY PRORATING THE DISTANCE BETWEEN THE NORTHWEST CORNER OF SECTION 6-83-2 AND EXTENDING AN EXISTING NORTH-SOUTH FENCE ON THE EAST LINE OF THE SW 1/4 SE 1/4 OF SECTION 31-84-2. SET REFERENCE TIES AS SHOWN BELOW.**

**SOUTHEAST CORNER - FOUND CUT "X" 7.0' ± NORTH OF CENTERLINE OF COUNTY ROAD E-45 AS DESCRIBED ON PREVIOUS SECTION CORNER CERTIFICATE RECORDED IN BOOK 2002 PAGE 4753 AT THE COUNTY RECORDER'S OFFICE. FOUND ONE REMAINING REFERENCE TIE SO TWO MORE WERE ADDED AS SHOWN BELOW.**

COORDINATES LISTED HEREON ARE DERIVED FROM THE IOWA DEPARTMENT OF TRANSPORTATION REAL TIME NETWORK COLLECTED IN THE NAD83(2011) (Epoch 2010.0000) NETWORK REF FRAME AND ARE PROVIDED FOR RECOVERY USE ONLY.



NORTH QUARTER CORNER 6-83-2  
 SOUTH QUARTER CORNER 6-83-2

N: 3479385.87  
 E: 5569909.78  
 SOUTHEAST CORNER 6-83-2

JOB:	17113
DRAWN:	D. THOMA
NOT TO SCALE	
DATE:	10/02/2018



I HEREBY CERTIFY THAT THIS LAND SURVEYING DOCUMENT WAS PREPARED AND THE RELATED SURVEY WORK WAS PERFORMED BY ME OR UNDER MY DIRECT PERSONAL SUPERVISION AND THAT I AM A DULY LICENSED PROFESSIONAL LAND SURVEYOR UNDER THE LAWS OF THE STATE OF IOWA.

SIGNATURE: *[Signature]* DATE: 10/04/2018  
 LEO P. BONIFAZI  
 LICENSE NO. 13480  
 SHEETS COVERED BY THIS SEAL: THIS SHEET ONLY

MY LICENSE RENEWAL DATE IS DECEMBER 31, 2019

SCHNOOR-BONIFAZI  
 ENGINEERING & SURVEYING, LC  
 431 FIFTH AVENUE SW  
 CEDAR RAPIDS, IA 52404  
 (319) 298-8888 (PHONE)  
 s-b-engineering.com



# THIS IS NOT A CERTIFICATION

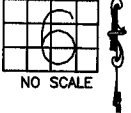
JONES COUNTY ENGINEER'S OFFICE, 19501 HWY. 64, ANAMOSA, IOWA, 52205 (319)462-3785

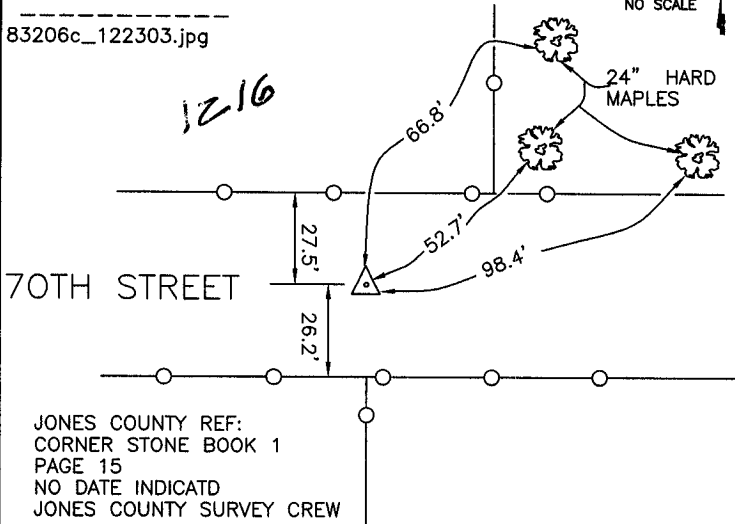
## UNITED STATES PUBLIC LAND SURVEY CORNER CERTIFICATE

LAND SURVEY MONUMENTS SITUATED IN SECTION 6, TOWNSHIP 83  
NORTH, RANGE 2 WEST OF THE 5TH P.M., JONES COUNTY, IOWA

**CORNERS TO BE INDEXED**

CORNER	SECTION	TOWNSHIP	RANGE
N-QUARTER	6	83N	2W
OFFICE FILE NO.			
83206c_122303.jpg			

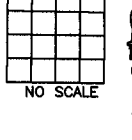




JONES COUNTY REF:  
CORNER STONE BOOK 1  
PAGE 15  
NO DATE INDICATD  
JONES COUNTY SURVEY CREW

**CORNERS TO BE INDEXED**

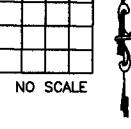
CORNER	SECTION	TOWNSHIP	RANGE
OFFICE FILE NO.			



PREVIOUSLY RECORDED IN BOOK \_\_\_\_\_, PAGE \_\_\_\_\_  
MONUMENT DESCRIPTION AND HOW ESTABLISHED \_\_\_\_\_

**CORNERS TO BE INDEXED**

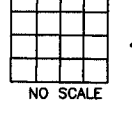
CORNER	SECTION	TOWNSHIP	RANGE
OFFICE FILE NO.			



PREVIOUSLY RECORDED IN BOOK \_\_\_\_\_, PAGE \_\_\_\_\_  
MONUMENT DESCRIPTION AND HOW ESTABLISHED \_\_\_\_\_

**CORNERS TO BE INDEXED**

CORNER	SECTION	TOWNSHIP	RANGE
OFFICE FILE NO.			



PREVIOUSLY RECORDED IN BOOK \_\_\_\_\_, PAGE \_\_\_\_\_  
MONUMENT DESCRIPTION AND HOW ESTABLISHED \_\_\_\_\_

~~I hereby declare that this plat, survey or report was made by me or under my direct personal supervision and that I am a duly registered Land Surveyor under the laws of the State of Iowa.~~

Signed: \_\_\_\_\_

SEAL

JONES COUNTY  
ENGINEER'S OFFICE

19501 HWY. 64,  
ANAMOSA, IOWA,  
52205 (319)462-3785

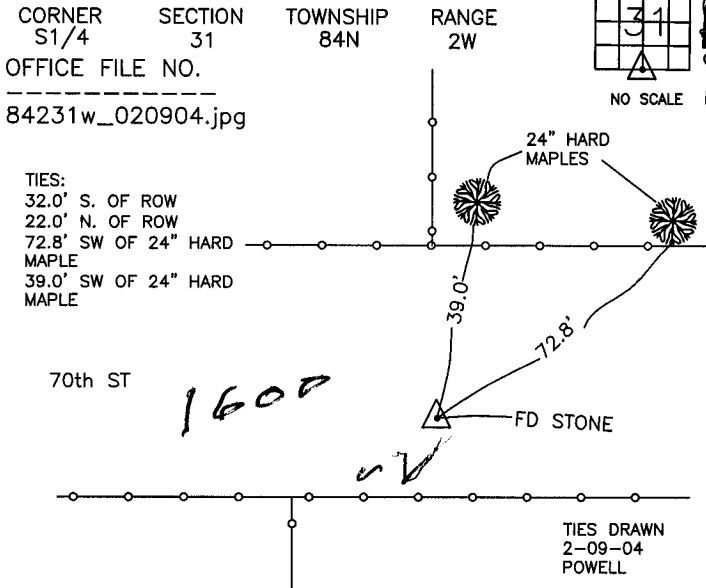
# THIS IS NOT A CERTIFICATION

JONES COUNTY ENGINEER'S OFFICE, 19501 HWY. 64, ANAMOSA, IOWA, 52205 (319)462-3785

## UNITED STATES PUBLIC LAND SURVEY CORNER CERTIFICATE

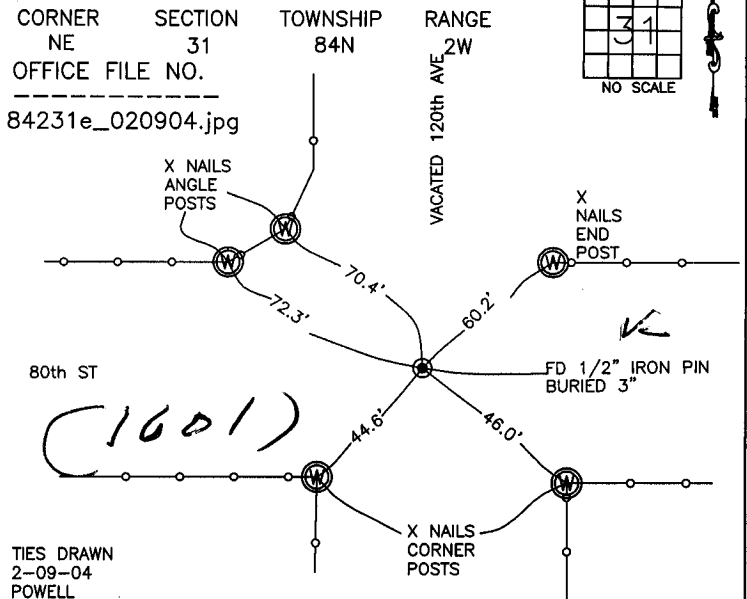
LAND SURVEY MONUMENTS SITUATED IN SECTION 31, TOWNSHIP 84  
NORTH, RANGE 2 WEST OF THE 5TH P.M., JONES COUNTY, IOWA

### CORNERS TO BE INDEXED



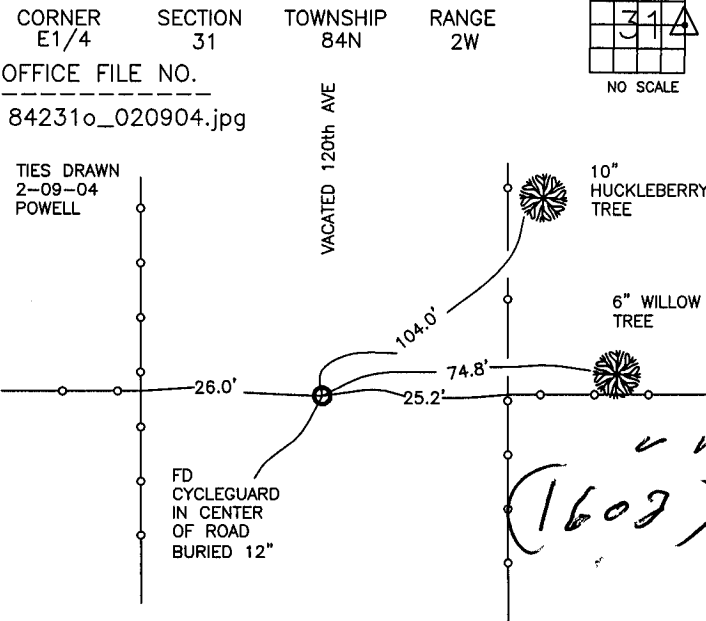
PREVIOUSLY RECORDED IN BOOK NA, PAGE NA  
MONUMENT DESCRIPTION AND HOW ESTABLISHED \_\_\_\_\_  
TIES ON RECORD IN JONES CO. ENGINEER'S OFFICE: FOUND 12"X12"X12" GRANITE 5'-8" SOUTH OF FENCE SPLIT BURIED 26" UNDER PRESENT ROAD SURFACE. JONES CO. CORNER STONE BK #1 P. 16. NO DATE RECORDED.

### CORNERS TO BE INDEXED



PREVIOUSLY RECORDED IN BOOK NA, PAGE NA  
MONUMENT DESCRIPTION AND HOW ESTABLISHED \_\_\_\_\_  
TIES ON RECORD IN JONES CO. ENGINEER'S OFFICE REF: TO IDOT PROJECT # F-61-1(2)--20-53.

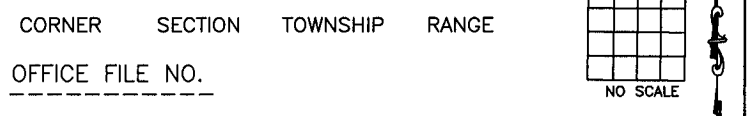
### CORNERS TO BE INDEXED



PREVIOUSLY RECORDED IN BOOK NA, PAGE NA  
MONUMENT DESCRIPTION AND HOW ESTABLISHED \_\_\_\_\_

TIES ON RECORD IN JONES CO. ENGINEER'S OFFICE. REF: JONES CO. CORNER STONE BK #1 P. 17. FOUND CYCLE GUARD IN CENTER OF ROAD BURIED 12". GUARD WAS STANDING ON END AND WAS 2"X8".

### CORNERS TO BE INDEXED



PREVIOUSLY RECORDED IN BOOK \_\_\_\_\_, PAGE \_\_\_\_\_  
MONUMENT DESCRIPTION AND HOW ESTABLISHED \_\_\_\_\_

~~I hereby declare that this plat, survey or report was made by me or under my direct personal supervision and that I am a duly registered Land Surveyor under the laws of the State of Iowa.~~

Signed: \_\_\_\_\_

SEAL

JONES COUNTY  
ENGINEER'S OFFICE

19501 HWY. 64,  
ANAMOSA, IOWA,  
52205 (319)462-3785

*h*