

COPY

☐☐
 Jones County Marie Krutzfield Recorder
 Fee Book 2012 2192
 07/31/2012 @0935AM # Pages 1
 ZSC SEC COR CERT
 Total Fees: \$7.00

PREPARED BY: VJ ENGINEERING, DAVID M. WEST, P.L.S., 2570 HOLIDAY ROAD STE. 10, CORALVILLE, IOWA 52241, (319) 338-4939

UNITED STATES PUBLIC LAND SURVEY CORNER CERTIFICATE
 OF

LAND SURVEY MONUMENT SITUATED IN SECTION 7, TOWNSHIP 83 NORTH, RANGE 2 WEST,
 OF THE FIFTH PRINCIPAL MERIDIAN, JONES COUNTY, IOWA.
 PREVIOUSLY RECORDED IN NONE COUNTY RECORDER'S OFFICE.

MONUMENT DESCRIPTION AND REMARKS:

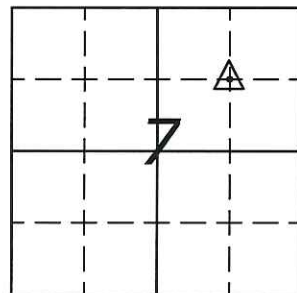
NORTHEAST CORNER OF THE SOUTHWEST 1/4 OF THE NORTHEAST 1/4 OF SECTION 7-T83N-R2W FOUND 60d REDHEAD IN BETWEEN CORNER POSTS. REMOVED NAIL AND SET 5/8" REBAR WITH ORANGE PLASTIC CAP 15749 3" ABOVE GRADE. POSITION IS CONSISTENT WITH LOCATION OF THE NORTHWEST CORNER OF LOT 5 OF BECKER FIRST ADDITION AS FOUND IN PLAT BOOK '1' AT PAGE 98 OF THE JONES COUNTY RECORDS. THE CORNER IS CONSISTENT WITH OCCUPATION AND POSSESSION LINES AND WAS ACCEPTED AS WITNESSED BY THE EVIDENCE. THERE IS NO CERTIFICATE ON FILE FOR THIS CORNER.

DISTANCES ARE PLUMB CHAIN UNLESS OTHERWISE NOTED.

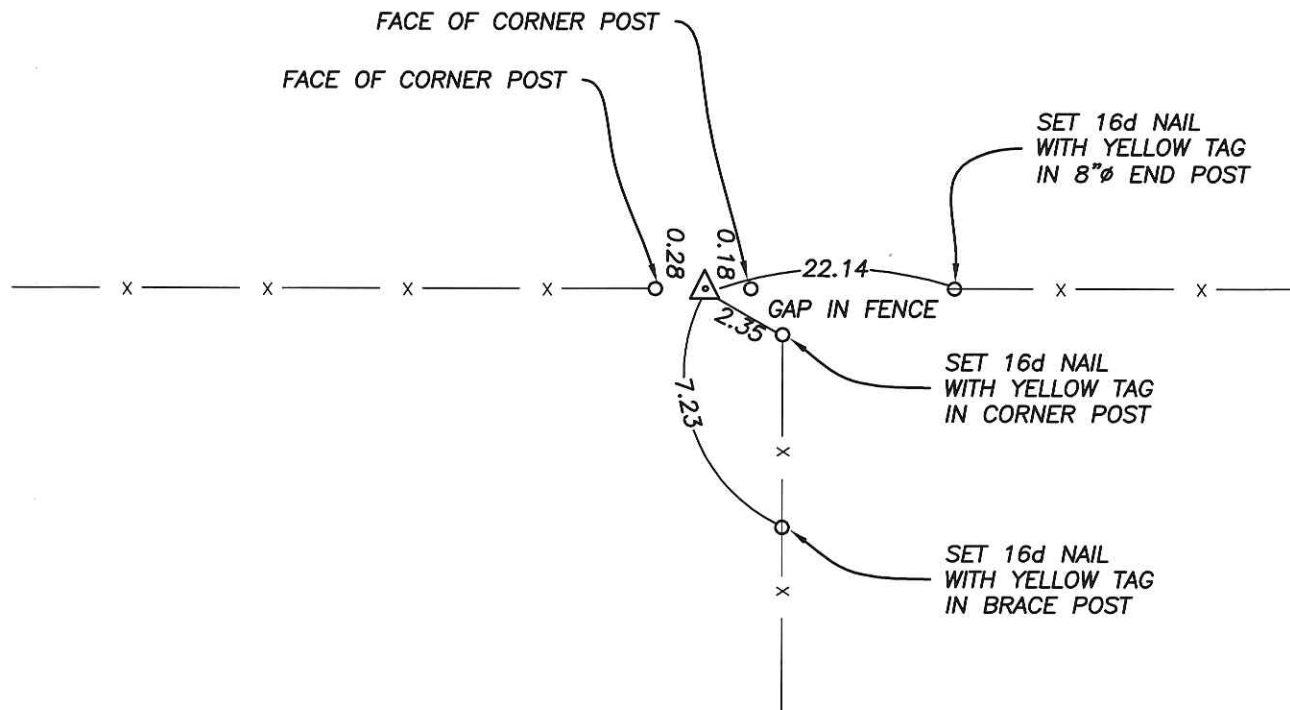
PLAN VIEW

NORTHEAST CORNER
 SOUTHWEST 1/4 NORTHEAST 1/4
 SECTION 7-T83N-R2W

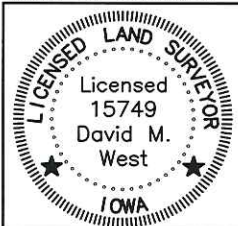
FOUND 60d REDHEAD IN BETWEEN CORNER POSTS. REMOVED NAIL AND SET 5/8" REBAR WITH ORANGE PLASTIC CAP 15749 3" ABOVE GRADE.



NORTH



DATE OF SURVEY: 7/17/12--7/19/12



I hereby certify that this land surveying document was prepared and the related survey work was performed by me or under my direct personal supervision and that I am a duly licensed Land Surveyor under the laws of the State of Iowa.
David M. West 7/30/12
 DAVID M. WEST, L.S. DATE
 License number 15749
 My license renewal date is December 31, 2012
 Pages or sheets covered by this seal: 1

CORNERS TO BE INDEXED:

CORNER	SECTION	TWP	RANGE
NORTHEAST COR. SW 1/4 NE 1/4	7	83N	2W

THIS IS NOT A CERTIFICATION

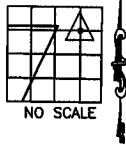
JONES COUNTY ENGINEER'S OFFICE, 19501 HWY. 64, ANAMOSA, IOWA, 52205 (319)462-3785

UNITED STATES PUBLIC LAND SURVEY CORNER CERTIFICATE

LAND SURVEY MONUMENTS SITUATED IN SECTION 7, TOWNSHIP 83
NORTH, RANGE 2 WEST OF THE 5TH P.M., JONES COUNTY, IOWA

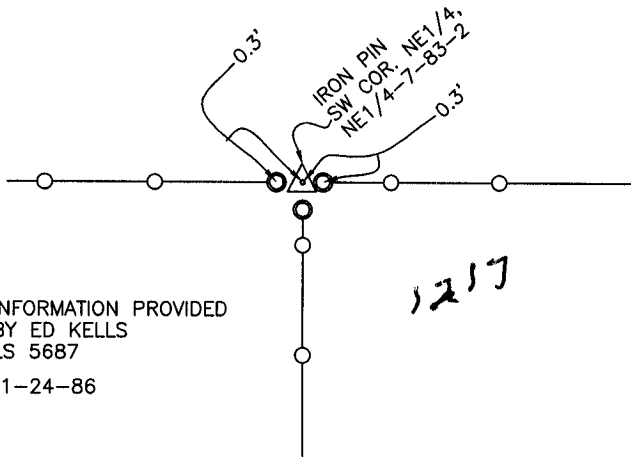
CORNERS TO BE INDEXED

CORNER SECTION TOWNSHIP RANGE
SW.COR-NE-NE 7 83N 2W



OFFICE FILE NO.

83207i_122303.jpg

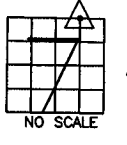


INFORMATION PROVIDED
BY ED KELLS
LS 5687
1-24-86

PREVIOUSLY RECORDED IN BOOK _____, PAGE _____
MONUMENT DESCRIPTION AND HOW ESTABLISHED INFORMATION
AS INDICATED PROVIDED BY ED KELLS LS 5687, SOUTHWEST CORNER
OF NORTHEAST QUARTER OF NORTHEAST QUARTER OF SECTION 7,
TOWNSHIP 83 NORTH, RANGE 2 WEST OF THE 5TH PRINCIPAL MERIDIAN,
JONES COUNTY, IOWA.

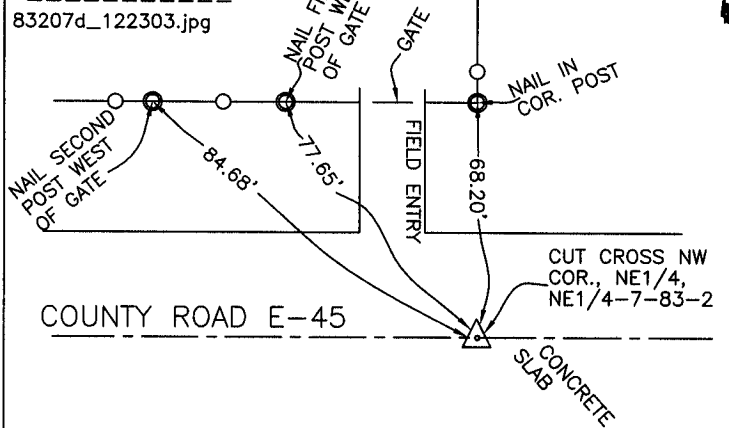
CORNERS TO BE INDEXED

CORNER SECTION TOWNSHIP RANGE
NW.COR-NE-NE 7 83N 2W



OFFICE FILE NO.

83207d_122303.jpg

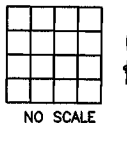


INFORMATION PROVIDED BY
ED KELLS LS 5687
1-24-86

PREVIOUSLY RECORDED IN BOOK _____, PAGE _____
MONUMENT DESCRIPTION AND HOW ESTABLISHED INFORMATION
AS SHOWN PROVIDED BY ED KELLS LS 5687. CUT CROSS SHOWN AS
THE NORTHWEST CORNER OF THE NORTHEAST QUARTER OF THE
NORTHEAST QUARTER OF SECTION 7, TOWNSHIP 83 NORTH, RANGE
2 WEST OF THE 5TH PRINCIPAL MERIDIAN, JONES COUNTY, IOWA.

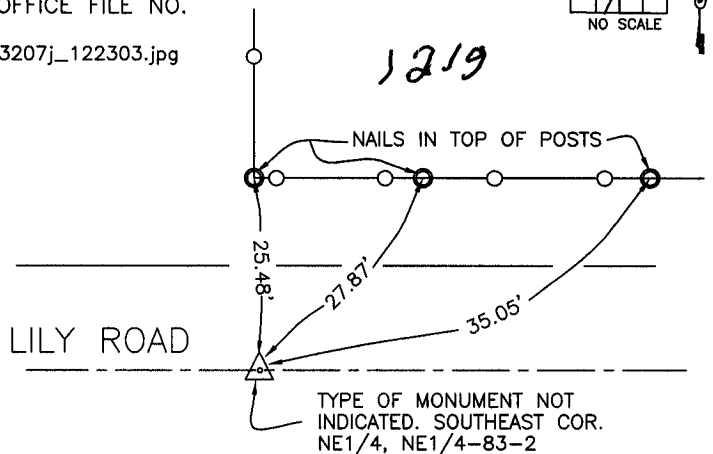
CORNERS TO BE INDEXED

CORNER SECTION TOWNSHIP RANGE



OFFICE FILE NO.

83207j_122303.jpg



INFORMATION PROVIDED BY
ED KELLS LS 5687
1-24-86

PREVIOUSLY RECORDED IN BOOK _____, PAGE _____
MONUMENT DESCRIPTION AND HOW ESTABLISHED INFORMATION
AS SHOWN PROVIDED BY ED KELLS, LS 5687. TYPE OF MONUMENT
NOT IDENTIFIED. SOUTHEAST CORNER OF THE NORTHEAST QUARTER OF
THE NORTHEAST QUARTER OF SECTION 7, TOWNSHIP 83 NORTH,
RANGE 2 WEST OF THE 5TH PRINCIPAL MERIDIAN, JONES COUNTY, IOWA.

~~I hereby declare that this plat, survey or report was made by me or under my direct personal supervision and that I am a duly registered Land Surveyor under the laws of the State of Iowa.~~

Signed:

SEAL

JONES COUNTY
ENGINEER'S OFFICE

19501 HWY. 64,
ANAMOSA, IOWA,
52205 (319)462-3785