

COPY

Jones County Marie Krutzfield Recorder  
 Fee Book 2011 2837  
 11/02/2011 @0221PM # Pages 1  
 ZSC SEC COR CERT  
 Total Fees: \$7.00

PREPARED BY: MICHAEL J. WEBER, WEBER SURVEYING, LLC, 26789 46TH AVE, BERNARD, IA 52032 (563) 879-4173

UNITED STATES PUBLIC LAND SURVEY CORNER CERTIFICATE  
 OF

LAND SURVEY MONUMENTS SITUATED IN SECTION 8, TOWNSHIP 83 NORTH, RANGE 2 WEST  
 OF THE FIFTH PRINCIPAL MERIDIAN, JONES COUNTY, IOWA.  
 PREVIOUSLY RECORDED SEE NOTES BELOW

(book, page, document number, etc.)

(Show reason for preparing this certificate, the evidence and detailed procedures used in establishing the corner positions and monumentation found or placed.)

Monument Description and Remarks:

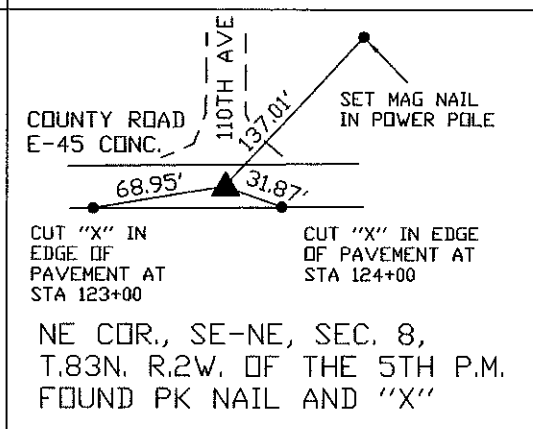
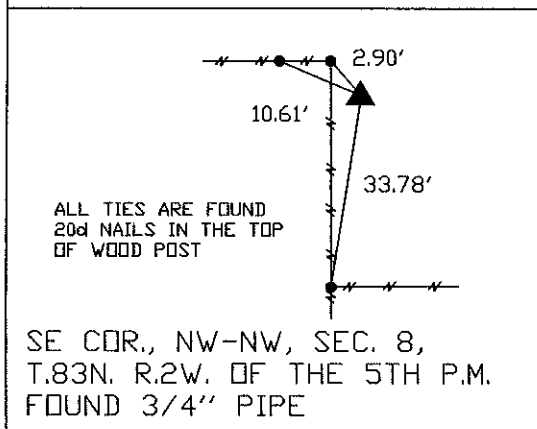
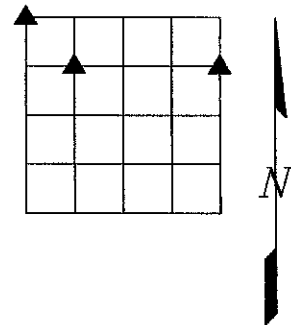
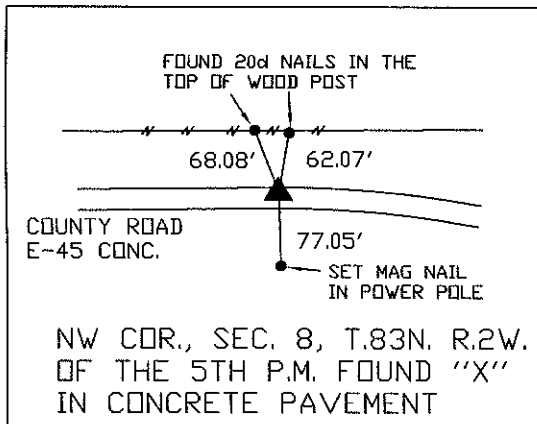
NW COR., SEC. 8, T.83N. R.2W. OF THE 5TH P.M. FOUND "X" IN CONCRETE PAVEMENT PER SEC. COR. CERT. DOC. NO. 2002 4753. ESTABLISHED NEW TIES.

SE COR., NW-NW, SEC. 8, T.83N. R.2W. OF THE 5TH P.M. FOUND 3/4" PIPE. ESTABLISHED CORNER AS SHOWN ON PLAT BOOK H PAGE 66.

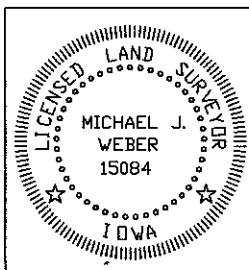
NE COR., SE-NE, SEC. 8, T.83N. R.2W. OF THE 5TH P.M. FOUND PK NAIL. ESTABLISHED CORNER AS SHOWN ON PLAT BOOK P PAGE 12

PLAN - VIEW

(Show a minimum of three reference ties to durable physical objects, relevant monuments and physical conditions that will enable recovery of the corner.)



DWG NO: 2011\BECKOLIN



I HEREBY CERTIFY THAT THIS LAND SURVEYING DOCUMENT WAS PREPARED AND THE RELATED SURVEY WORK WAS PERFORMED BY ME OR UNDER MY DIRECT PERSONAL SUPERVISION AND THAT I AM A DULY LICENSED LAND SURVEYOR UNDER THE LAWS OF THE STATE OF IOWA.

*Michael J. Weber* November 1, 2011  
 MICHAEL J. WEBER (DATE)

LICENSE NUMBER 15084  
 MY LICENSE RENEWAL DATE IS DECEMBER 31, 2011

SHEETS COVERED BY THIS SEAL: 1

List Corners to be Indexed		
Corner	Sec	Twp Range
NW Cor.	8	83N 2W
SE Cor. NW-NW	8	83N 2W
NE Cor. SE-NE	8	83N 2W

# THIS IS NOT A CERTIFICATION

JONES COUNTY ENGINEER'S OFFICE, 19501 HWY. 64, ANAMOSA, IOWA, 52205 (319)462-3785

## UNITED STATES PUBLIC LAND SURVEY CORNER CERTIFICATE

LAND SURVEY MONUMENTS SITUATED IN SECTION 8, TOWNSHIP 83  
NORTH, RANGE 2 WEST OF THE 5TH P.M., JONES COUNTY, IOWA

**CORNERS TO BE INDEXED**

CORNER	SECTION	TOWNSHIP	RANGE
NORTHEAST	8	83N	2W

OFFICE FILE NO. \_\_\_\_\_  
83208e\_122303.jpg

INFORMATION PROVIDED BY ED KELLS LS 5687 1-24-86

PREVIOUSLY RECORDED IN BOOK \_\_\_\_\_, PAGE \_\_\_\_\_  
MONUMENT DESCRIPTION AND HOW ESTABLISHED INFORMATION AS SHOWN WAS PROVIDED BY ED KELLS LS 5687. MONUMENT NOT IDENTIFIED, REFERENCE POINTS AND TIES AS INDICATED. NORTHEAST CORNER OF SECTION 8, TOWNSHIP 83 NORTH, RANGE 2 WEST OF THE 5TH PRINCIPAL MERIDIAN, JONES COUNTY, IOWA.

**CORNERS TO BE INDEXED**

CORNER	SECTION	TOWNSHIP	RANGE
SE.COR-NW1/4	8	83N	2W

OFFICE FILE NO. \_\_\_\_\_  
83208g\_122303.jpg

INFORMATION PROVIDED BY ED KELLS LS 5687 1-24-86

PREVIOUSLY RECORDED IN BOOK \_\_\_\_\_, PAGE \_\_\_\_\_  
MONUMENT DESCRIPTION AND HOW ESTABLISHED INFORMATION AS SHOWN WAS PROVIDED BY ED KELLS LS 5687. IRON PIPE SHOWN AT THE SOUTHEAST CORNER OF THE NORTHWEST QUARTER OF THE NORTHWEST QUARTER OF SECTION 8, TOWNSHIP 83 NORTH, RANGE 2 WEST OF THE 5TH PRINCIPAL MERIDIAN, JONES COUNTY, IOWA.

**CORNERS TO BE INDEXED**

CORNER	SECTION	TOWNSHIP	RANGE

OFFICE FILE NO. \_\_\_\_\_

PREVIOUSLY RECORDED IN BOOK \_\_\_\_\_, PAGE \_\_\_\_\_  
MONUMENT DESCRIPTION AND HOW ESTABLISHED \_\_\_\_\_

**CORNERS TO BE INDEXED**

CORNER	SECTION	TOWNSHIP	RANGE

OFFICE FILE NO. \_\_\_\_\_

PREVIOUSLY RECORDED IN BOOK \_\_\_\_\_, PAGE \_\_\_\_\_  
MONUMENT DESCRIPTION AND HOW ESTABLISHED \_\_\_\_\_

~~I hereby declare that this plat, survey or report was made by me or under my direct personal supervision and that I am a duly registered Land Surveyor under the laws of the State of Iowa.~~

Signed: \_\_\_\_\_

SEAL

JONES COUNTY ENGINEER'S OFFICE

19501 HWY. 64,  
ANAMOSA, IOWA,  
52205 (319)462-3785