

# THIS IS NOT A CERTIFICATION

JONES COUNTY ENGINEER'S OFFICE, 19501 HWY. 64, ANAMOSA, IOWA, 52205 (319)462-3785

## UNITED STATES PUBLIC LAND SURVEY CORNER CERTIFICATE

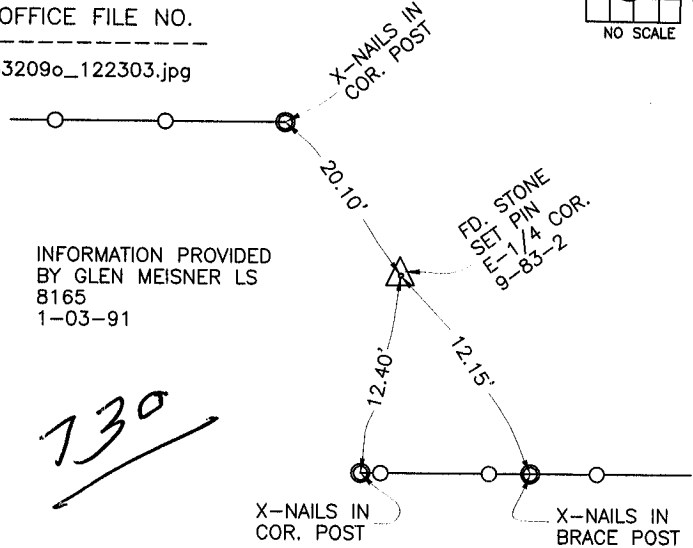
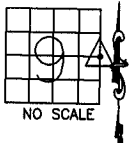
LAND SURVEY MONUMENTS SITUATED IN SECTION 9, TOWNSHIP 83  
NORTH, RANGE 2 WEST OF THE 5TH P.M., JONES COUNTY, IOWA

### CORNERS TO BE INDEXED

CORNER SECTION TOWNSHIP RANGE  
E-QUARTER 9 83N 2W

OFFICE FILE NO.

83209o\_122303.jpg



INFORMATION PROVIDED  
BY GLEN MEISNER LS  
8165  
1-03-91

730

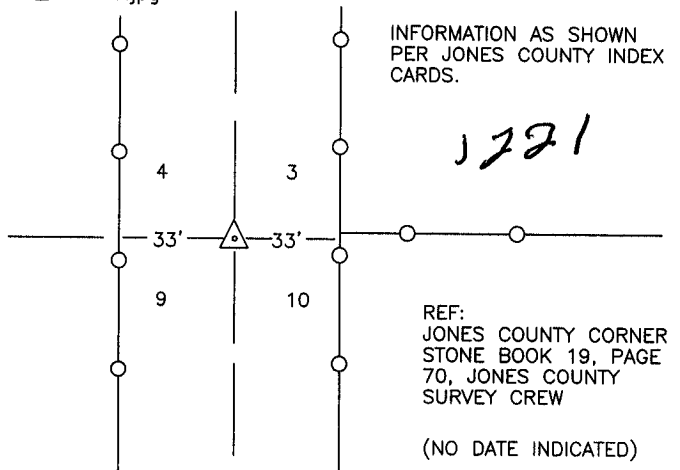
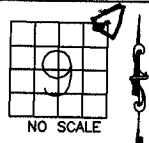
PREVIOUSLY RECORDED IN BOOK \_\_\_\_\_, PAGE \_\_\_\_\_  
MONUMENT DESCRIPTION AND HOW ESTABLISHED INFORMATION  
AS SHOWN PROVIDED BY GLEN MEISNER LS 8165, FD. STONE AND  
SET PIN, EAST QUARTER COR. SECTION 9, TOWNSHIP 83 NORTH,  
RANGE 2 WEST OF THE 5TH PRINCIPAL MERIDIAN, JONES COUNTY,  
IOWA.

### CORNERS TO BE INDEXED

CORNER SECTION TOWNSHIP RANGE  
NE-CORNER 9 83N 2W

OFFICE FILE NO.

83209e\_122903.jpg

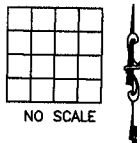


PREVIOUSLY RECORDED IN BOOK \_\_\_\_\_, PAGE \_\_\_\_\_  
MONUMENT DESCRIPTION AND HOW ESTABLISHED INDEX  
CARD PER JONES COUNTY SURVEY CREW. NO DATE INDICATED.  
TYPE OF MONUMENT NOT INDICATED. NORTHEAST CORNER OF  
SECTION 9, TOWNSHIP 83 NORTH, RANGE 2 WEST OF THE 5TH  
PRINCIPAL MERIDIAN, JONES COUNTY, IOWA.

### CORNERS TO BE INDEXED

CORNER SECTION TOWNSHIP RANGE

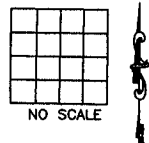
OFFICE FILE NO.



### CORNERS TO BE INDEXED

CORNER SECTION TOWNSHIP RANGE

OFFICE FILE NO.



PREVIOUSLY RECORDED IN BOOK \_\_\_\_\_, PAGE \_\_\_\_\_  
MONUMENT DESCRIPTION AND HOW ESTABLISHED \_\_\_\_\_  
\_\_\_\_\_  
\_\_\_\_\_

PREVIOUSLY RECORDED IN BOOK \_\_\_\_\_, PAGE \_\_\_\_\_  
MONUMENT DESCRIPTION AND HOW ESTABLISHED \_\_\_\_\_  
\_\_\_\_\_  
\_\_\_\_\_

~~I hereby declare that this plat, survey or report  
was made by me or under my direct personal  
supervision and that I am a duly registered Land  
Surveyor under the laws of the State of Iowa.~~

Signed: \_\_\_\_\_

SEAL

JONES COUNTY  
ENGINEER'S OFFICE

19501 HWY. 64,  
ANAMOSA, IOWA,  
52205 (319)462-3785