

COPY

Jones County Marie Krutzfield Recorder
 Fee Book 2012 1005
 04/16/2012 @0401PM # Pages 1
 ZSC SEC COR CERT
 Total Fees: \$7.00

PREPARED BY: MICHAEL J. WEBER, WEBER SURVEYING, LLC, 26789 46TH AVE, BERNARD, IA 52032 (563) 879-4173

UNITED STATES PUBLIC LAND SURVEY CORNER CERTIFICATE OF

LAND SURVEY MONUMENTS SITUATED IN SECTION 1, TOWNSHIP 84 NORTH, RANGE 3 WEST
 OF THE FIFTH PRINCIPAL MERIDIAN, JONES COUNTY, IOWA.
 PREVIOUSLY RECORDED NONE UNLESS NOTED BELOW

(book, page, document number, etc.)

(Show reason for preparing this certificate, the evidence and detailed procedures used in establishing the corner positions and monumentation found or placed.)

Monument Description and Remarks:

WEST 1/4 COR, SEC. 1, T.84N. R.3W. OF THE 5TH P.M. FOUND 1/2" REROD W/RED CAP NO. 11954 PREVIOUSLY RECORDED AS DOC. NO. 1999 1805 ESTABLISHED NEW TIES

NE COR, NW-SW, SEC. 1, T.84N. R.3W. OF THE 5TH P.M. PLACED 5/8" REROD W/ORANGE CAP NO. 15084 , ESTABLISHED CORNER MIDWAY AND ONLINE BETWEEN THE WEST 1/4 AND THE CENTER.

CENTER, SEC. 1, T.84N. R.3W. OF THE 5TH P.M. FOUND 6" X 5" X 3" STONE NEXT TO OCCUPATION FENCE RUNNING NORTH AND EAST PLACED 5/8" REROD W/ORANGE CAP NO. 15084

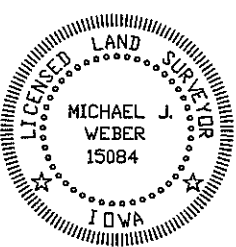
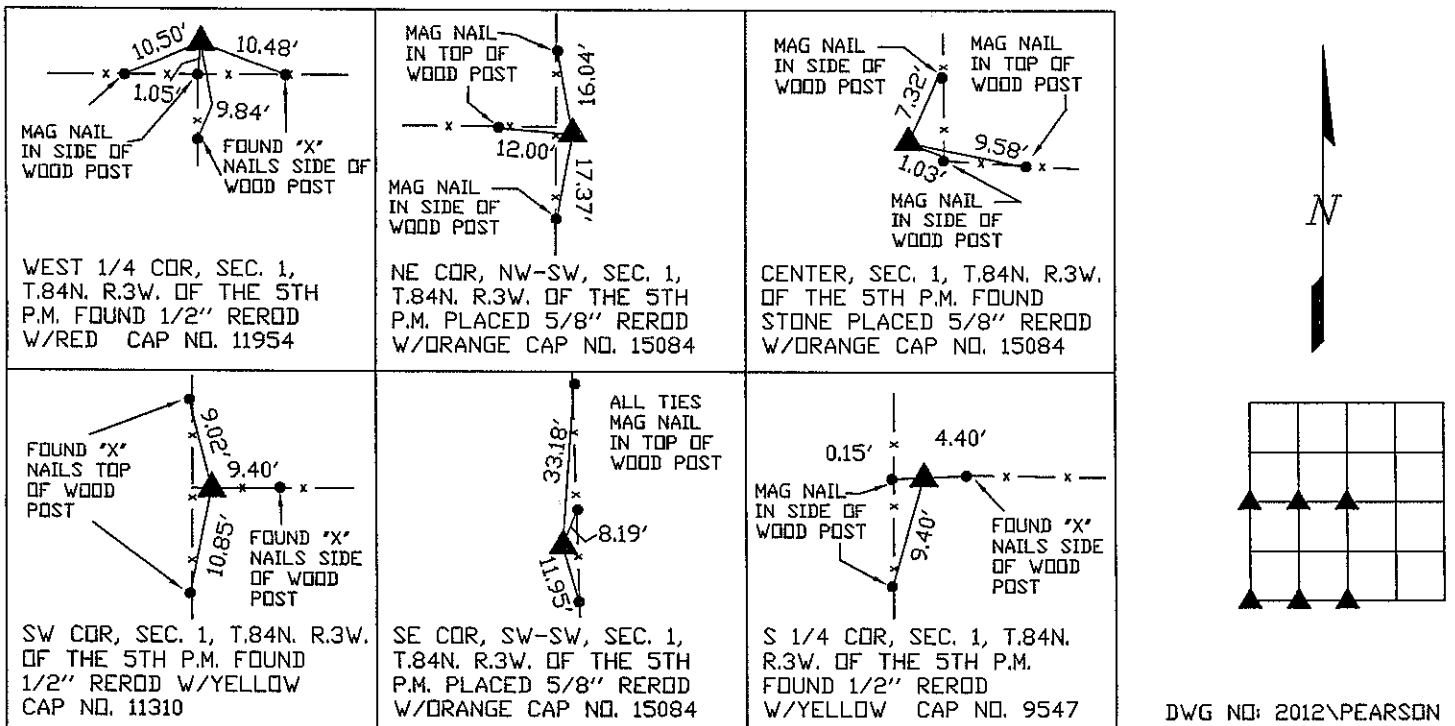
SW COR, SEC. 1, T.84N. R.3W. OF THE 5TH P.M. FOUND 1/2" REROD W/YELLOW CAP NO. 11310 PREVIOUSLY RECORDED AS DOC. NO. 1999 1805 REMEASURED TIES

SE COR, SW-SW, SEC. 1, T.84N. R.3W. OF THE 5TH P.M. PLACED 5/8" REROD W/ORANGE CAP NO. 15084 ESTABLISHED CORNER MIDWAY AND ONLINE BETWEEN THE SW CORNER AND THE S 1/4 COR.

S 1/4 COR, SEC. 1, T.84N. R.3W. OF THE 5TH P.M. FOUND 1/2" REROD W/YELLOW CAP NO. 9547 PREVIOUSLY RECORDED AS DOC. NO. 2000 35484 ESTABLISHED NEW TIES

PLAN - VIEW

(Show a minimum of three reference ties to durable physical objects, relevant monuments and physical conditions that will enable recovery of the corner.)



I HEREBY CERTIFY THAT THIS LAND SURVEYING DOCUMENT WAS
 PREPARED AND THE RELATED SURVEY WORK WAS PERFORMED BY ME OR
 UNDER MY DIRECT PERSONAL SUPERVISION AND THAT I AM A DULY
 LICENSED LAND SURVEYOR UNDER THE LAWS OF IOWA.
Michael J. Weber April 16, 2012
 MICHAEL J. WEBER (DATE)
 LICENSE NUMBER 15084
 MY LICENSE RENEWAL DATE IS DECEMBER 31, 2013
 SHEETS COVERED BY THIS SEAL: Sheet 1

List Corners to be Indexed		
Corner	Sec	Twp Range
WEST 1/4 Cor.	1	84N 3W
NE COR, NW-SW	1	84N 3W
CENTER	1	84N 3W
SW COR.	1	84N 3W
SE COR, SW-SW	1	84N 3W
S 1/4 COR.	1	84N 3W

2000 3548

FILED
RECORDERS OFFICE
JONES COUNTY IOWA

00 NOV 20 AM 11:37

MARIE KRUTZFIELD
RECORDER 6.00 PD

STEPHEN MICHAEL BRAIN, BRAIN ENGINEERING, INC., 777 10TH STREET, MARION, IOWA 52302 PH. (319) 373-1318

UNITED STATES PUBLIC LAND SURVEY CORNER CERTIFICATE

LAND SURVEY MONUMENTS SITUATED IN SECTION 12, TOWNSHIP 84 NORTH
RANGE 3 WEST OF THE 5TH P.M., JONES COUNTY, IOWA.

NO SCALE

N
N 1/4 CORNER

843 12 C - 111400

PREVIOUSLY RECORDED IN BOOK _____ PAGE _____

MONUMENT DESCRIPTION AND HOW ESTABLISHED _____
SET 1/2" REBAR 2" ABOVE GROUND. NO TIES
ON FILE.

NO SCALE

N

PREVIOUSLY RECORDED IN BOOK _____ PAGE _____

MONUMENT DESCRIPTION AND HOW ESTABLISHED _____

I hereby certify that this land surveying document and the related survey work was performed by me or under my direct personal supervision and that I am a duly licensed Land Surveyor under the laws of the State of Iowa.

Signed: *[Signature]* Date: 11/14/00

Stephen Michael Brain, L.S.
My License Renewal Date is December 31, 2000
License Number 9647
Pages or sheets covered by this seal: 1/1

CORNERS TO BE INDEXED

CORNER SECTION TOWNSHIP RANGE
N 1/4 CORNER 12 T84N R3W

BRAIN ENGINEERING, INC.
777 10TH STREET
MARION, IOWA 52302 26890-10
(319) 373-1318