

2005 1935  
 FILED  
 RECORDERS OFFICE  
 JONES COUNTY IOWA

05 JUN -7 AM 10:43

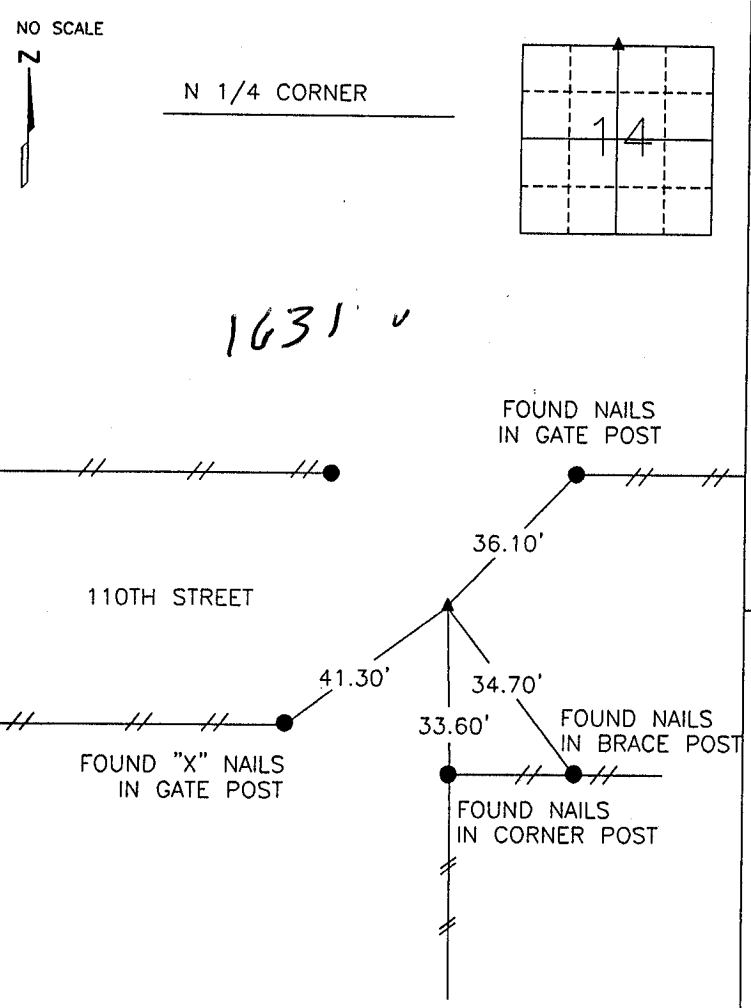
MARIE KRUTZFIELD  
 RECORDER 7.00 Pd

PREPARED BY

STEPHEN MICHAEL BRAIN, BRAIN ENGINEERING, INC., 1540 MIDLAND COURT NE, CEDAR RAPIDS, IOWA PH. (319) 294-9424

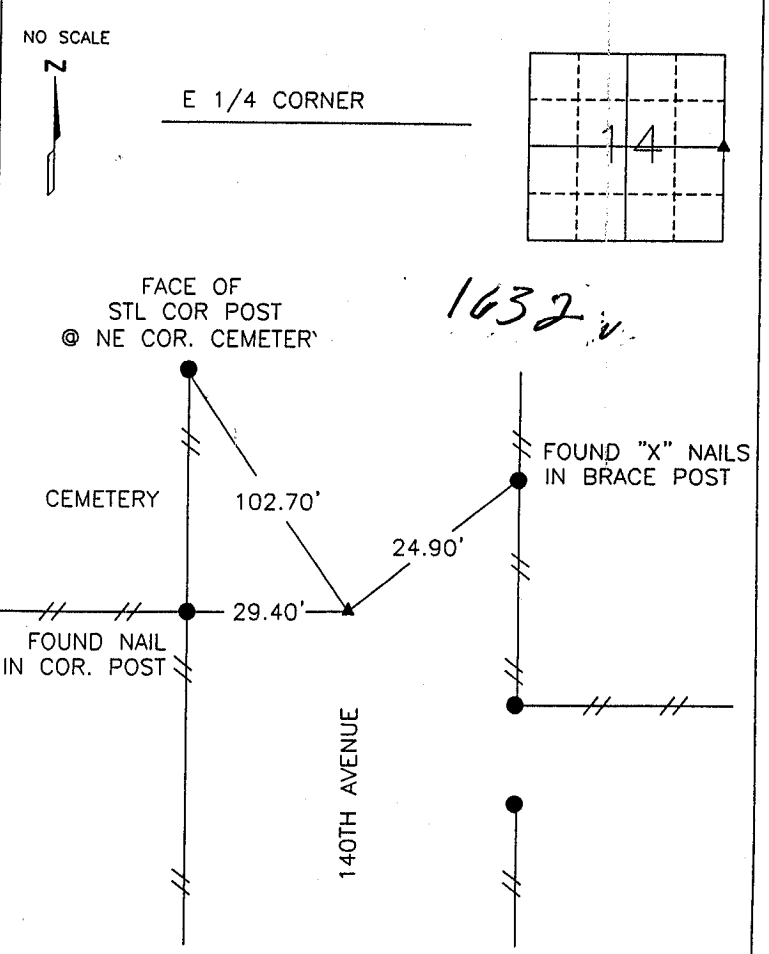
# UNITED STATES PUBLIC LAND SURVEY CORNER CERTIFICATE

LAND SURVEY MONUMENTS SITUATED IN SECTION 14, TOWNSHIP 84 NORTH  
 RANGE 3 WEST OF THE 5TH P.M., \_\_\_\_\_ JONES \_\_\_\_\_ COUNTY, IOWA.



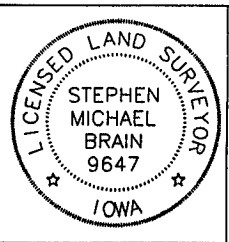
843140-060605.tik

PREVIOUSLY RECORDED IN BOOK \_\_\_\_\_ PAGE \_\_\_\_\_  
 MONUMENT DESCRIPTION AND HOW ESTABLISHED \_\_\_\_\_  
 FOUND IA. DOT MONUMENT



843140-060605.tik

PREVIOUSLY RECORDED IN BOOK \_\_\_\_\_ PAGE \_\_\_\_\_  
 MONUMENT DESCRIPTION AND HOW ESTABLISHED \_\_\_\_\_  
 FOUND IA. DOT MONUMENT 2" DEEP.



I hereby certify that this land surveying document and the related survey work was performed by me or under my direct personal supervision and that I am a duly licensed Land Surveyor under the laws of the State of Iowa.  
 Signed *Stephen Michael Brain* Date *6/6/05*  
 Stephen Michael Brain, L.S.  
 My License Renewal Date is December 31, 2006  
 License Number 9647  
 Pages or sheets covered by this seal: 1/1

- A.THERE IS NO CERTIFICATE FOR THE CORNER ON FILE WITH THE RECORDER OF THE COUNTY IN WHICH THE CORNER IS LOCATED
- B.THE SURVEYOR IN RESPONSIBLE CHARGE OF THE LAND SURVEYING ACCEPTS A CORNER POSITION WHICH DIFFERS FROM THAT SHOWN IN THE PUBLIC RECORDS OF THE COUNTY IN WHICH THE CORNER IS LOCATED.
- C.THE CORNER MONUMENT IS REPLACED OR MODIFIED IN ANY WAY.
- D.THE REFERENCE TIES REFERRED TO IN AN EXISTING PUBLIC RECORD ARE NOT CORRECT.

CORNERS TO BE INDEXED			
CORNER	SECTION	TOWNSHIP	RANGE
N 1/4 CORNER	14	T84N	R 3 W
E 1/4 CORNER	14	T84N	R 3 W

**BRAIN ENGINEERING, INC.**  
 1540 MIDLAND COURT NE  
 CEDAR RAPIDS, IOWA 52402  
 (319) 294-9424  
 285005-30  
 V SMB LIS

J