

Jones County
 Marie Krutzfield, Recorder
Fee Book 2010 1389
 05/28/2010 @0940AM
 ZSC SEC COR CERT
 Book: Page: # Pages: 1
 Total Fees: \$9.00

Prepared by Wm. Burger Land Surveyor 510 3rd Street West Court, Worthington, Iowa Phone 563 - 855 2028

UNITED STATES PUBLIC LAND SURVEY CORNER CERTIFICATE

Land Survey Monuments situated in Section 15, Township 84N, Range 3W, of the Fifth Principal Meridian, Jones County, Iowa. Previously recorded in N/A in the Office of the County Recorder

Monument Description and Remarks: (No Corner Certificates found at the County Recorders Office)

E1/4 CORNER - FD. BRASS PLUG IN CONCRETE PAVEMENT

SE CORNER NE1/4 SE1/4 - SET 1/2" IRON ROD W/ YELLOW LS CAP #12642 - SET ON LINE AND MIDWAY BETWEEN THE E1/4 CORNER AND THE SE CORNER

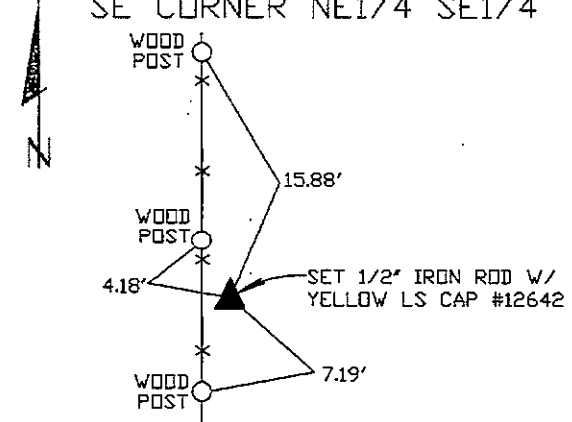
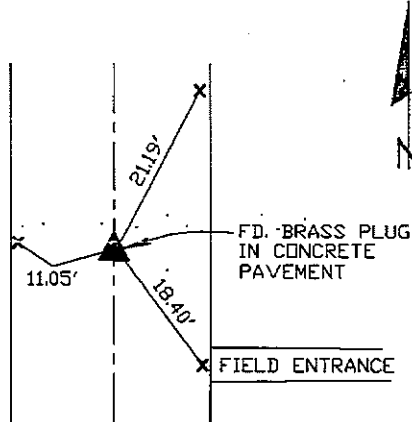
SE CORNER - FD. LIMESTONE WITH 1/2" IRON ROD NEXT TO IT ON NORTH SIDE

SW CORNER NE1/4 SE1/4 - SET 1/2" IRON ROD W/ YELLOW LS CAP #12642 - RUN STRAIGHT LINES FROM OPPOSITE 1/4 1/4 CORNERS AND SET AT POINT OF INTERSECTION

E1/4 CORNER

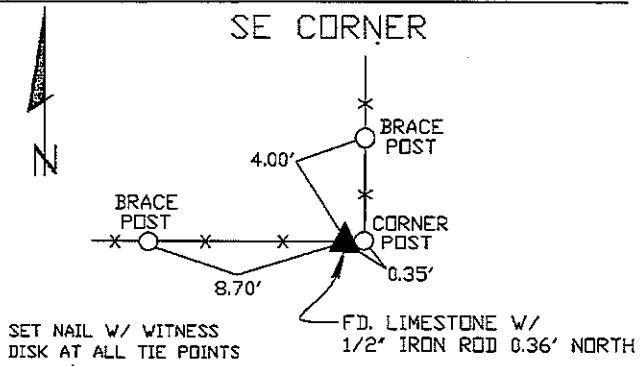
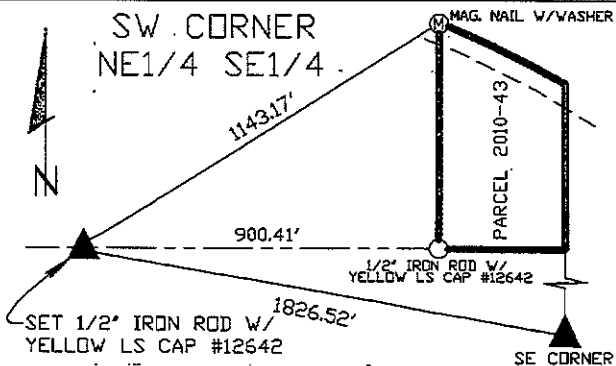
PLAN VIEW

SE CORNER NE1/4 SE1/4



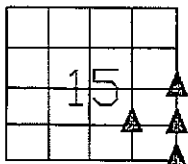
SET CUT 'X' IN CONCRETE ROADWAY AT ALL TIE POINTS

SET NAIL W/ WITNESS DISK ON TOP OF POST AT ALL TIE POINTS

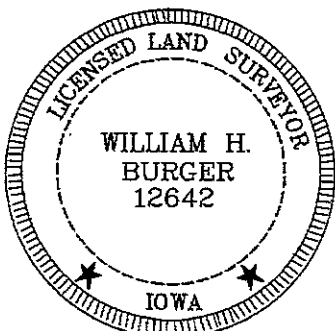


CORNERS TO BE INDEXED

E1/4 CORNER	15	84N	3W
SE CORNER NE1/4 SE1/4	15	84N	3W
SW CORNER NE1/4 SE1/4	15	84N	3W
SE CORNER	15	84N	3W



SEC. 15 TWP. 84N RANGE 3W



I hereby certify that this land surveying document was prepared and related survey work was performed by me or under my direct personal supervision and that I am a duly licensed Land Surveyor under the laws of the State of Iowa.

William H. Burger 5/27/10
 William H. Burger Date

License number 12642

My license renewal date is December 31, 2010

Pages or Sheets covered by this seal: Sheet 1 of 1