

2005 2329

FILED  
RECORDERS OFFICE  
JONES COUNTY IOWA

05 JUL -5 AM 8:49

MARIE KRUTZFIELD 7:00 PD

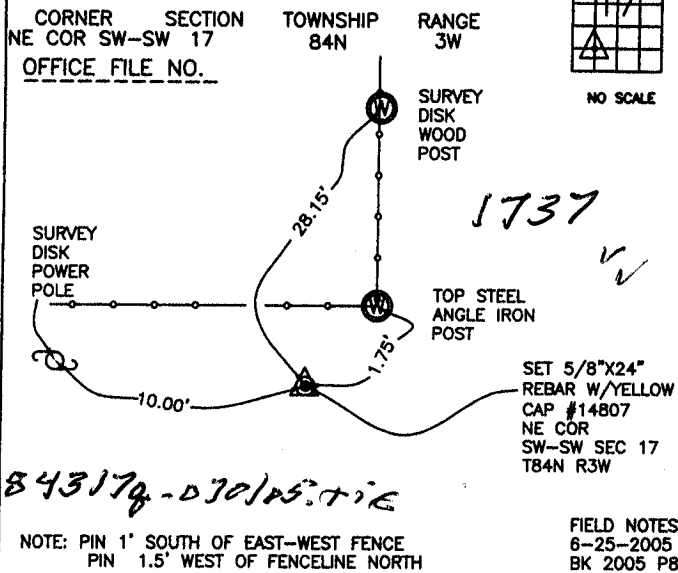
RECORDER

J.D. TJEPKES, LS. 14807, 23428 RIDGE ROAD, ANAMOSA, IOWA, 52205 (319-462-6067)

# UNITED STATES PUBLIC LAND SURVEY CORNER CERTIFICATE

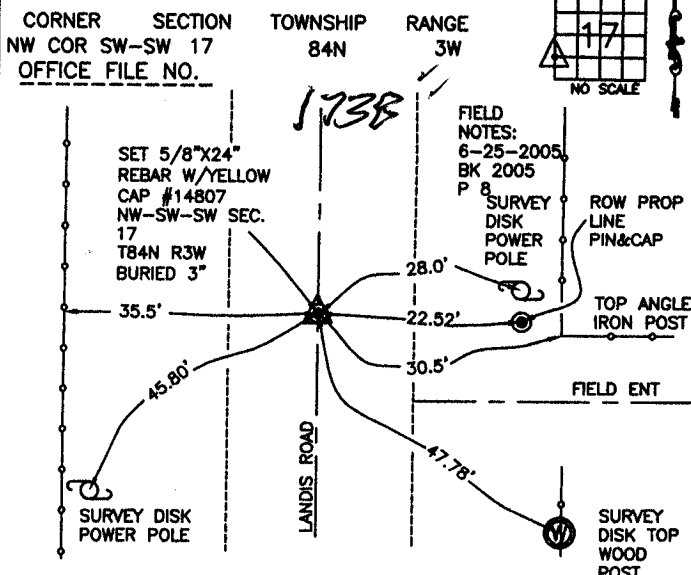
LAND SURVEY MONUMENTS SITUATED IN SECTION 17, TOWNSHIP 84  
NORTH, RANGE 3 WEST OF THE 5TH P.M., JONES COUNTY, IOWA

### CORNERS TO BE INDEXED



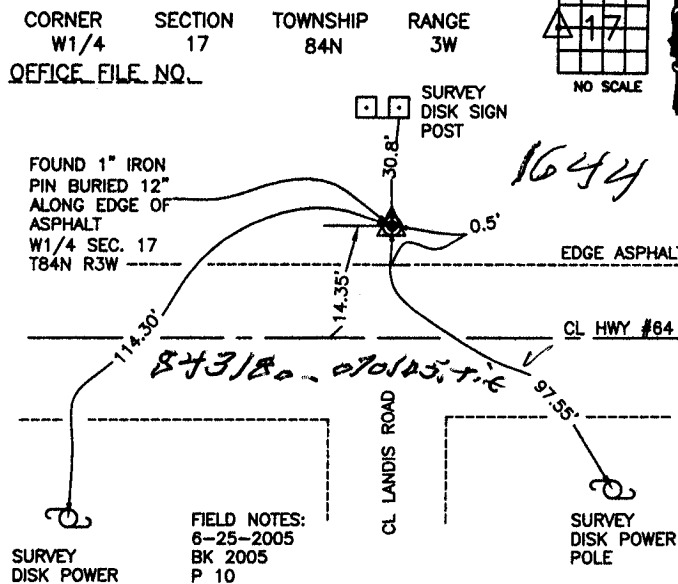
PREVIOUSLY RECORDED IN BOOK NA, PAGE NA  
MONUMENT DESCRIPTION AND HOW ESTABLISHED  
PER BREAKDOWN OF SW 1/4 SECTION 17 T84N R3W, SET 5/8"X24" REBAR W/YELLOW CAP #14807, 3" ABOVE PRESENT GROUND. TIES AS INDICATED FOR NE CORNER SW 1/4 SW 1/4 SECTION 17 T84N R3W.

### CORNERS TO BE INDEXED



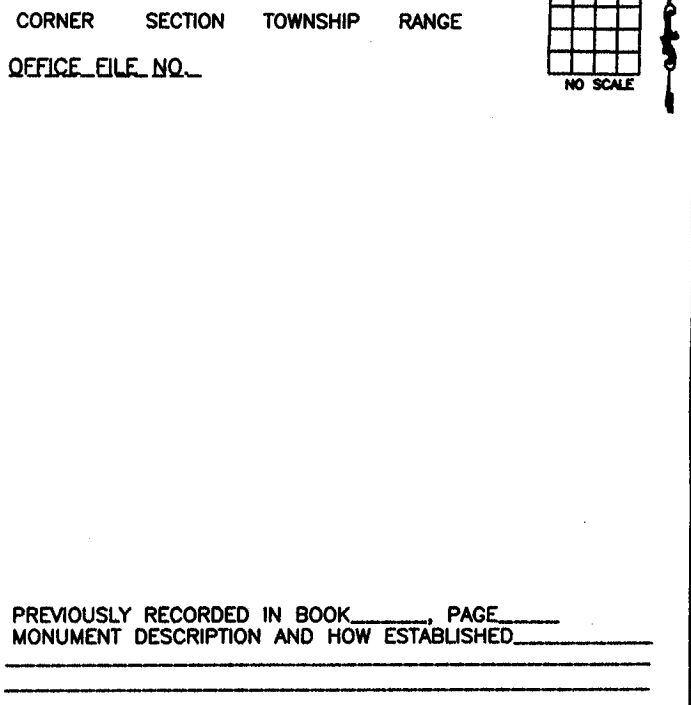
PREVIOUSLY RECORDED IN BOOK NA, PAGE NA  
MONUMENT DESCRIPTION AND HOW ESTABLISHED  
PER BREAKDOWN OF SW 1/4 SECTION 17 T84N R3W, SET 5/8"X24" REBAR W/YELLOW CAP #14807 BURIED 3" IN CENTERLINE LANDIS ROAD. TIES AS INDICATED FOR NW CORNER SW 1/4 SW 1/4 SECTION 17 T84N R3W.

### CORNERS TO BE INDEXED



PREVIOUSLY RECORDED IN BOOK NA, PAGE NA  
MONUMENT DESCRIPTION AND HOW ESTABLISHED  
PER OLD TIES ON FILE IN JONES CO. ENGINEER'S OFFICE, FROM I.D.O.T. HWY #64, FOUND 1" IRON PIN BURIED 12", 0.5' NORTH OF EDGE OF ASPHALT, AND 14.35' NORTH OF CENTERLINE #64. TIES AS INDICATED FOR W 1/4 SECTION 17 T84N R3W.

### CORNERS TO BE INDEXED

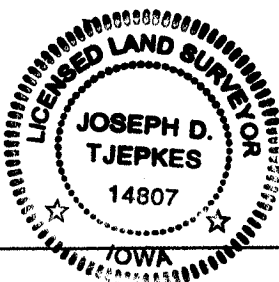


I hereby declare that this plat, survey or report was made by me or under my direct personal supervision and that I am a duly registered Land Surveyor under the laws of the State of Iowa.

Signed: *[Signature]* J.D. Tjepkes

Joseph D. Tjepkes L.S. Iowa Reg. No. 14807  
My Registration Renewal Date is December 31, 2006

SEAL



J.D. TJEPKES LS 14807  
23428 RIDGE ROAD  
ANAMOSA, IOWA, 52205  
(319)-462-6067

# THIS IS NOT A CERTIFICATION

JONES COUNTY ENGINEER'S OFFICE, 19501 HWY. 64, ANAMOSA, IOWA, 52205 (319)462-3785

## UNITED STATES PUBLIC LAND SURVEY CORNER CERTIFICATE

LAND SURVEY MONUMENTS SITUATED IN SECTION 18, TOWNSHIP 84  
NORTH, RANGE 3 WEST OF THE 5TH P.M., JONES COUNTY, IOWA

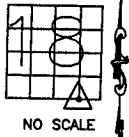
**CORNERS TO BE INDEXED**

CORNER SECTION TOWNSHIP RANGE  
SW-SE-SE 18 84N 3W

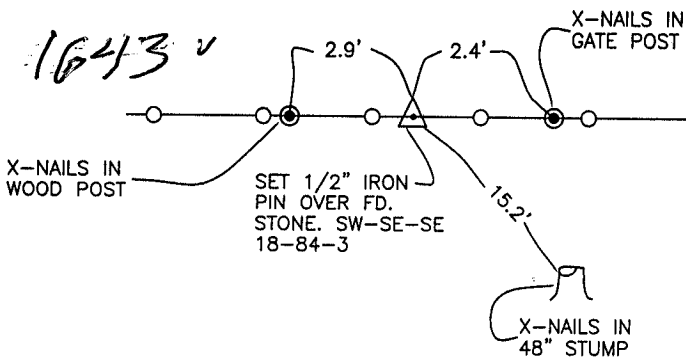
OFFICE FILE NO.

84318x\_040604.tif

*84319d\_040604.tif (3-15-76)*



NO SCALE



PREVIOUSLY RECORDED IN BOOK \_\_\_\_\_, PAGE \_\_\_\_\_  
MONUMENT DESCRIPTION AND HOW ESTABLISHED \_\_\_\_\_  
SURVEY CREW FOUND 3"x5"x8" STONE, LOWERED, SET 1/2" IRON PIN DIRECTLY ABOVE. SET TIES AS INDICATED. SOUTHWEST CORNER OF THE SOUTHEAST QUARTER OF THE SOUTHEAST QUARTER OF SECTION 18, TOWNSHIP 84 NORTH, RANGE 3 WEST OF THE 5TH PRINCIPAL MERIDIAN, JONES COUNTY, IOWA.

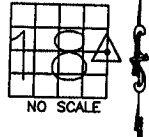
**CORNERS TO BE INDEXED**

CORNER SECTION TOWNSHIP RANGE  
E-QUARTER 18 84N 3W

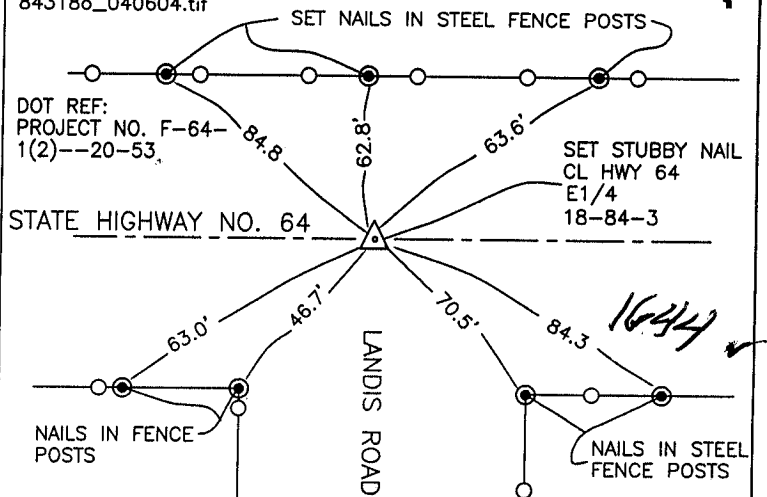
OFFICE FILE NO.

(4-29-74)

84318o\_040604.tif



NO SCALE

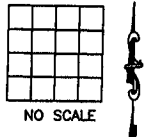


PREVIOUSLY RECORDED IN BOOK \_\_\_\_\_, PAGE \_\_\_\_\_  
MONUMENT DESCRIPTION AND HOW ESTABLISHED DOT  
SET STUBBY NAIL IN THE CENTERLINE OF STATE HIGHWAY NO. 64. SET REFERENCE POINTS AND TIED OUT AS INDICATED. EAST QUARTER CORNER, SECTION 18, TOWNSHIP 84 NORTH, RANGE 3 WEST OF THE 5TH PRINCIPAL MERIDIAN, JONES COUNTY, IOWA.

**CORNERS TO BE INDEXED**

CORNER SECTION TOWNSHIP RANGE

OFFICE FILE NO.

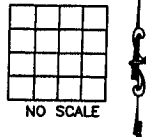


NO SCALE

**CORNERS TO BE INDEXED**

CORNER SECTION TOWNSHIP RANGE

OFFICE FILE NO.



NO SCALE

PREVIOUSLY RECORDED IN BOOK \_\_\_\_\_, PAGE \_\_\_\_\_  
MONUMENT DESCRIPTION AND HOW ESTABLISHED \_\_\_\_\_

PREVIOUSLY RECORDED IN BOOK \_\_\_\_\_, PAGE \_\_\_\_\_  
MONUMENT DESCRIPTION AND HOW ESTABLISHED \_\_\_\_\_

~~I hereby declare that this plat, survey or report was made by me or under my direct personal supervision and that I am a duly registered Land Surveyor under the laws of the State of Iowa.~~

SEAL

JONES COUNTY  
ENGINEER'S OFFICE

19501 HWY. 64,  
ANAMOSA, IOWA,  
52205 (319)462-3785

Signed:

*P*