

Jones County  
 Marie Krutzfield, Recorder  
**Fee Book 2010 1389**  
 05/28/2010 @0940AM  
 ZSC SEC COR CERT  
 Book: Page: # Pages: 1  
 Total Fees: \$9.00

Prepared by Wm. Burger Land Surveyor 510 3rd Street West Court, Worthington, Iowa Phone 563 - 855 2028

**UNITED STATES PUBLIC LAND SURVEY CORNER CERTIFICATE**

Land Survey Monuments situated in Section 15, Township 84N, Range 3W, of the Fifth Principal Meridian, Jones County, Iowa. Previously recorded in N/A in the Office of the County Recorder

Monument Description and Remarks: (No Corner Certificates found at the County Recorders Office)

E1/4 CORNER - FD. BRASS PLUG IN CONCRETE PAVEMENT

SE CORNER NE1/4 SE1/4 - SET 1/2" IRON ROD W/ YELLOW LS CAP #12642 - SET ON LINE AND MIDWAY BETWEEN THE E1/4 CORNER AND THE SE CORNER

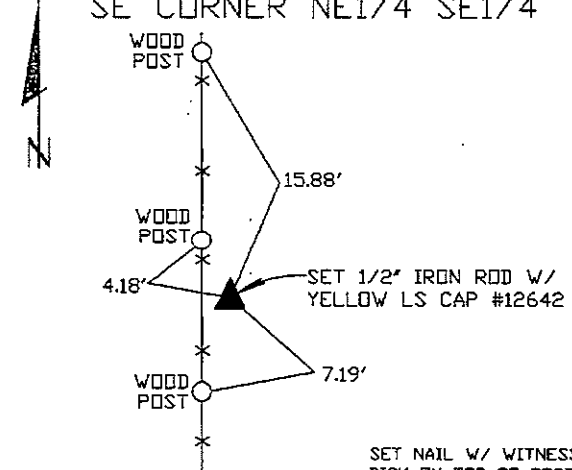
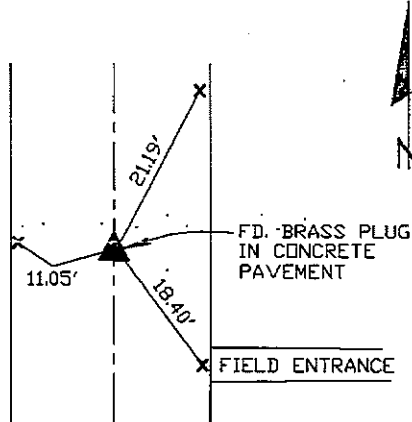
SE CORNER - FD. LIMESTONE WITH 1/2" IRON ROD NEXT TO IT ON NORTH SIDE

SW CORNER NE1/4 SE1/4 - SET 1/2" IRON ROD W/ YELLOW LS CAP #12642 - RUN STRAIGHT LINES FROM OPPOSITE 1/4 1/4 CORNERS AND SET AT POINT OF INTERSECTION

E1/4 CORNER

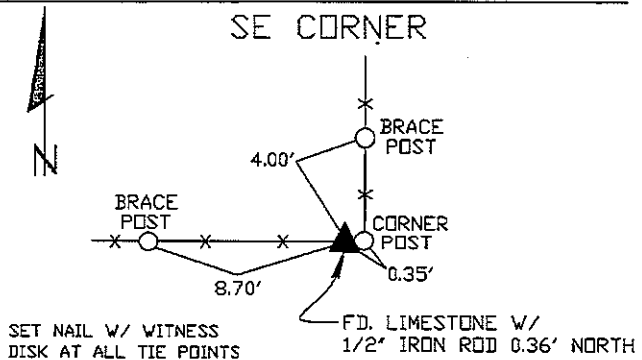
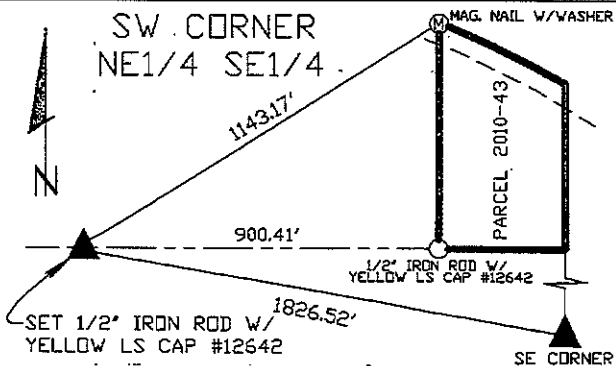
PLAN VIEW

SE CORNER NE1/4 SE1/4



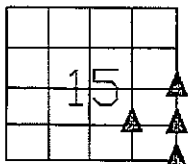
SET CUT 'X' IN CONCRETE ROADWAY AT ALL TIE POINTS

SET NAIL W/ WITNESS DISK ON TOP OF POST AT ALL TIE POINTS



SET NAIL W/ WITNESS DISK AT ALL TIE POINTS

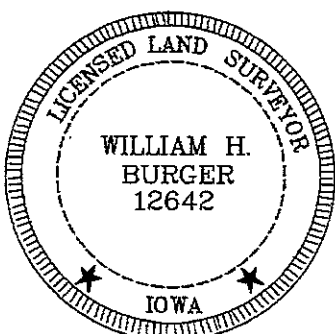
FD. LIMESTONE W/ 1/2" IRON ROD 0.36' NORTH



SEC. 15 TWP. 84N RANGE 3W

CORNERS TO BE INDEXED

E1/4 CORNER	15	84N	3W
SE CORNER NE1/4 SE1/4	15	84N	3W
SW CORNER NE1/4 SE1/4	15	84N	3W
SE CORNER	15	84N	3W



I hereby certify that this land surveying document was prepared and related survey work was performed by me or under my direct personal supervision and that I am a duly licensed Land Surveyor under the laws of the State of Iowa.

*William H. Burger* 5/27/10  
 William H. Burger Date

License number 12642

My license renewal date is December 31, 2010

Pages or Sheets covered by this seal: Sheet 1 of 1

# THIS IS NOT A CERTIFICATION

JONES COUNTY ENGINEER'S OFFICE, 19501 HWY. 64, ANAMOSA, IOWA, 52205 (319)462-3785

## UNITED STATES PUBLIC LAND SURVEY CORNER CERTIFICATE

LAND SURVEY MONUMENTS SITUATED IN SECTION 22, TOWNSHIP 84  
NORTH, RANGE 3 WEST OF THE 5TH P.M., JONES COUNTY, IOWA

**CORNERS TO BE INDEXED**

CORNER N-QUARTER	SECTION 22	TOWNSHIP 84N	RANGE 3W
---------------------	---------------	-----------------	-------------

OFFICE FILE NO. 84322c\_040704.tif

X-NAILS  
BRACE POST

NO SCALE

3-17-76

DOT REF:  
PROJ. NO. F-64-1(2)--20-53

FOUND 4"x5"x18"  
LIMESTONE  
N1/4-22-86-3

X-NAILS  
FENCE POST

X-NAILS COR. POSTS

1646 v

84322c\_040704.tif

PREVIOUSLY RECORDED IN BOOK \_\_\_\_\_, PAGE \_\_\_\_\_  
MONUMENT DESCRIPTION AND HOW ESTABLISHED FOUND \_\_\_\_\_

4"x5"x18" LIMESTONE FLUSH WITH GROUND. SET REFERENCE POINTS AND TIED AS INDICATED. NORTH QUARTER CORNER SECTION 22, TOWNSHIP 84 NORTH, RANGE 3 WEST, 5TH PRINCIPAL MERIDIAN, JONES COUNTY, IOWA.

**CORNERS TO BE INDEXED**

CORNER CENTER	SECTION 22	TOWNSHIP 84N	RANGE 3W
------------------	---------------	-----------------	-------------

OFFICE FILE NO. 84322m\_040704.tif

REF:  
JONES COUNTY CORNER  
STONE BOOK 19, PAGE 50

NO SCALE

10-28-41

COUNTY SURVEY CREW:  
RUBEK

6" BELOW SURFACE (?)  
TYPE OF MONUMENT NOT  
INDICATED.

X-NAILS  
FENCE POST

1647 v

84322m\_040704.tif

PREVIOUSLY RECORDED IN BOOK \_\_\_\_\_, PAGE \_\_\_\_\_  
MONUMENT DESCRIPTION AND HOW ESTABLISHED IN 1941 \_\_\_\_\_

COUNTY SURVEY CREW TIED CORNER, BUT DID NOT INDICATE TYPE OF MONUMENT. CENTER OF SECTION 22, TOWNSHIP 84 NORTH, RANGE 3 WEST OF THE 5TH PRINCIPAL MERIDIAN, JONES COUNTY, IOWA.

**CORNERS TO BE INDEXED**

CORNER E-QUARTER	SECTION 22	TOWNSHIP 84N	RANGE 3W
---------------------	---------------	-----------------	-------------

OFFICE FILE NO. 84322o\_040704.tif

REF: DOT  
PROJ. NO. F-64-1(2)--20-53

NO SCALE

3-22-76

X-NAILS IN COR. POST

X-NAILS IN GATE POLE

X-NAILS IN FENCE POST

X-NAILS IN TELE. POLE

FD. 1/2" IRON  
ROD 4" DEEP  
E1/4-22-84-3

X-NAILS IN POWER POLE

NAIL IN  
STEEL POST

1648 v

84322o\_040704.tif

PREVIOUSLY RECORDED IN BOOK \_\_\_\_\_, PAGE \_\_\_\_\_  
MONUMENT DESCRIPTION AND HOW ESTABLISHED FOUND \_\_\_\_\_

1/2" IRON ROD 4" BELOW SURFACE. SET REFERENCE POINTS AND TIED OUT AS INDICATED. EAST QUARTER CORNER SECTION 22, TOWNSHIP 84 NORTH, RANGE 3 WEST OF THE 5TH PRINCIPAL MERIDIAN, JONES COUNTY, IOWA.

**CORNERS TO BE INDEXED**

CORNER NORTHEAST	SECTION 22	TOWNSHIP 84N	RANGE 3W
---------------------	---------------	-----------------	-------------

OFFICE FILE NO. 84322e\_040704.tif

REF: DOT  
PROJ. NO. F-64-(2)--20-56

NO SCALE

4-5-74

X-NAILS IN FENCE POST

X-NAILS IN 4"  
CHOKE CHERRY

FOUND 2"x6"x8"  
LIMESTONE 4" DOWN  
NE COR. 22-84-3

X-NAILS IN POWER POLE

X-NAILS FENCE POST

X-NAILS COR. POST

X-NAILS FENCE POST

1649 v

84322e\_040704.tif

PREVIOUSLY RECORDED IN BOOK \_\_\_\_\_, PAGE \_\_\_\_\_  
MONUMENT DESCRIPTION AND HOW ESTABLISHED FOUND \_\_\_\_\_

2"x6"x8" LIMESTONE 4" BELOW SURFACE. SET REFERENCE POINTS AND TIED OUT AS INDICATED. NORTHEAST CORNER SECTION 22, TOWNSHIP 84 NORTH, RANGE 3 WEST OF THE 5TH PRINCIPAL MERIDIAN, JONES COUNTY, IOWA.

~~I hereby declare that this plat, survey or report was made by me or under my direct personal supervision and that I am a duly registered Land Surveyor under the laws of the State of Iowa.~~

Signed: \_\_\_\_\_

SEAL

JONES COUNTY  
ENGINEER'S OFFICE

19501 HWY. 64,  
ANAMOSA, IOWA,  
52205 (319)462-3785