

2005 1937

FILED  
RECORDERS OFFICE  
JONES COUNTY IOWA

05 JUN -7 AM 10:46

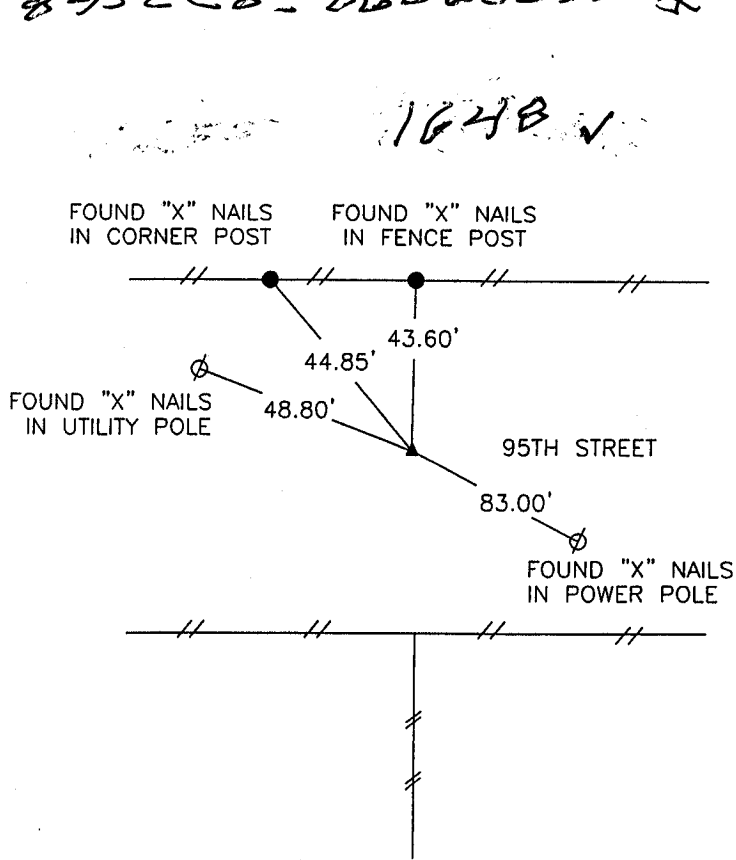
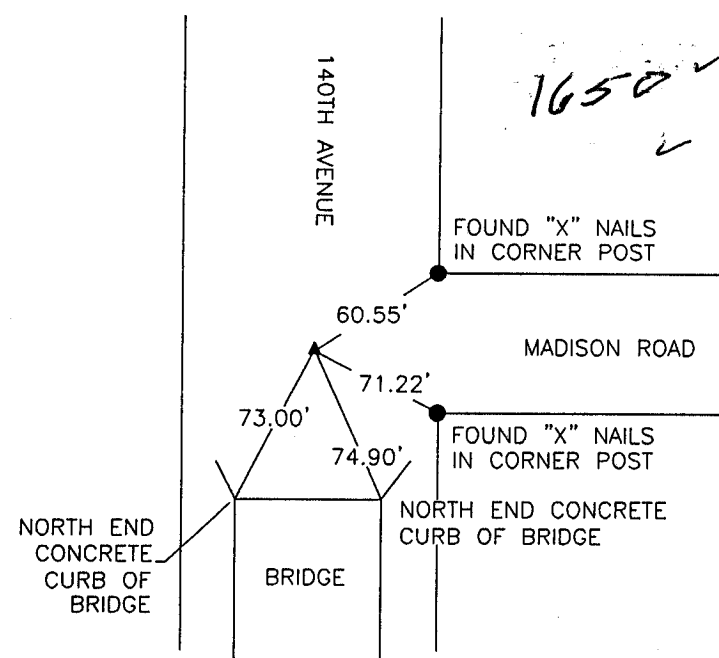
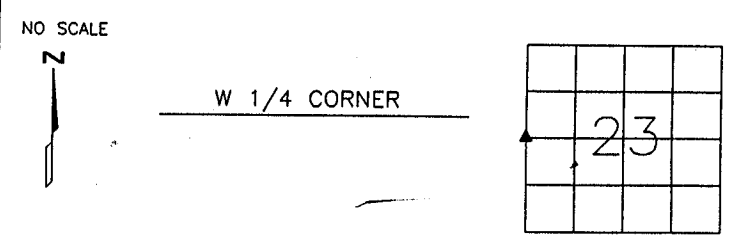
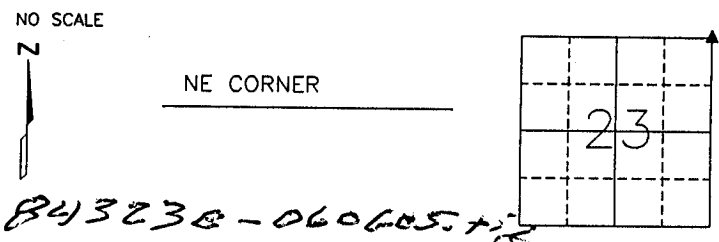
MARIE KRUTZFIELD  
RECORDER 7.00 Pd

PREPARED BY

STEPHEN MICHAEL BRAIN, BRAIN ENGINEERING, INC., 1540 MIDLAND COURT NE, CEDAR RAPIDS, IOWA PH. (319) 294-9424

# UNITED STATES PUBLIC LAND SURVEY CORNER CERTIFICATE

LAND SURVEY MONUMENTS SITUATED IN SECTION 23, TOWNSHIP 84 NORTH  
RANGE 3 WEST OF THE 5TH P.M., JONES COUNTY, IOWA.



PREVIOUSLY RECORDED IN BOOK \_\_\_\_\_ PAGE \_\_\_\_\_

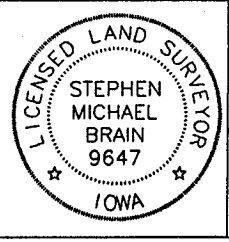
MONUMENT DESCRIPTION AND HOW ESTABLISHED \_\_\_\_\_

FOUND 5/8" REBAR 6" DEEP

PREVIOUSLY RECORDED IN BOOK \_\_\_\_\_ PAGE \_\_\_\_\_

MONUMENT DESCRIPTION AND HOW ESTABLISHED \_\_\_\_\_

FOUND 5/8" REBAR



I hereby certify that this land surveying document and the related survey work was performed by me or under my direct personal supervision and that I am a duly licensed Land Surveyor under the laws of the State of Iowa.

Signed: *Stephen Michael Brain* Date: 6/6/05

Stephen Michael Brain, L.S.  
My License Renewal Date is December 31, 2006  
License Number 9647  
Pages or sheets covered by this seal: 1/1

- A.THERE IS NO CERTIFICATE FOR THE CORNER ON FILE WITH THE RECORDER OF THE COUNTY IN WHICH THE CORNER IS LOCATED
  - B.THE SURVEYOR IN RESPONSIBLE CHARGE OF THE LAND SURVEYING ACCEPTS A CORNER POSITION WHICH DIFFERS FROM THAT SHOWN IN THE PUBLIC RECORDS OF THE COUNTY IN WHICH THE CORNER IS LOCATED.
  - C.THE CORNER MONUMENT IS REPLACED OR MODIFIED IN ANY WAY.
  - D.THE REFERENCE TIES REFERRED TO IN AN EXISTING PUBLIC RECORD ARE NOT CORRECT.
- v Sub 45

CORNERS TO BE INDEXED			
CORNER	SECTION	TOWNSHIP	RANGE
NE CORNER	23	T84N	R 3 W
W 1/4 CORNER	23	T84N	R 3 W

**BRAIN ENGINEERING, INC.**  
1540 MIDLAND COURT NE  
CEDAR RAPIDS, IOWA 52402 285005-30  
(319) 294-9424