

THIS IS NOT A CERTIFICATION

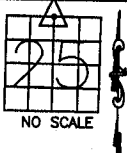
JONES COUNTY ENGINEER'S OFFICE, 19501 HWY. 64, ANAMOSA, IOWA, 52205 (319)462-3785

UNITED STATES PUBLIC LAND SURVEY CORNER CERTIFICATE

LAND SURVEY MONUMENTS SITUATED IN SECTION 25, TOWNSHIP 84 NORTH, RANGE 3 WEST OF THE 5TH P.M., JONES COUNTY, IOWA

CORNERS TO BE INDEXED

CORNER SECTION TOWNSHIP RANGE
N-QUARTER 25 84N 3W

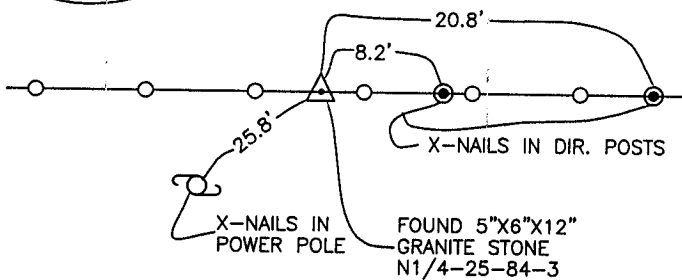


OFFICE FILE NO.

84325c_040804.tif

DOT REF:
PROJ. NO. F-64-1(0)--20-53

5-12-76

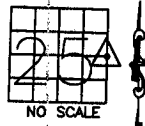


1654 ✓

PREVIOUSLY RECORDED IN BOOK _____, PAGE _____
MONUMENT DESCRIPTION AND HOW ESTABLISHED FOUND
5"x6"x12" GRANITE STONE FLUSH WITH SURFACE. SET REFERENCE POINTS AND TIED AS INDICATED. NORTH QUARTER CORNER SECTION 25, TOWNSHIP 84 NORTH, RANGE 3 WEST OF THE 5TH PRINCIPAL MERIDIAN, JONES COUNTY, IOWA.

CORNERS TO BE INDEXED

CORNER SECTION TOWNSHIP RANGE
E-QUARTER 25 84N 3W

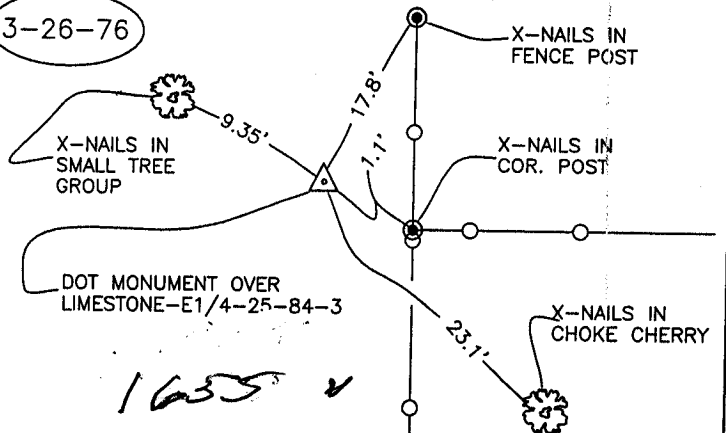


OFFICE FILE NO.

84325o_040804.tif

DOT REF:
PROJ. NO. F-64-1(2)--20-53

3-26-76

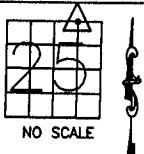


1635 ✓

PREVIOUSLY RECORDED IN BOOK _____, PAGE _____
MONUMENT DESCRIPTION AND HOW ESTABLISHED FOUND
4"x5"x11" LIMESTONE, SET DEPARTMENT OF TRANSPORTATION MONUMENT ABOVE. SET REFERENCE POINTS AND TIED OUT AS INDICATED. EAST QUARTER CORNER SECTION 25, TOWNSHIP 84 NORTH, RANGE 3 WEST OF THE 5TH PRINCIPAL MERIDIAN, JONES COUNTY, IOWA.

CORNERS TO BE INDEXED

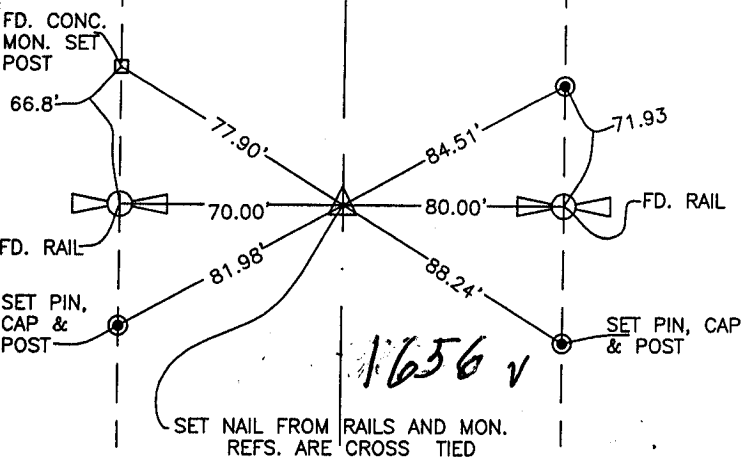
CORNER SECTION TOWNSHIP RANGE
NW-COR, 25 84N 3W



OFFICE FILE NO.

84325d_040804.tif

POT 454+53.20
CL #38

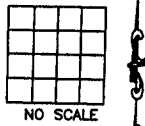


1656 ✓

PREVIOUSLY RECORDED IN BOOK _____, PAGE _____
MONUMENT DESCRIPTION AND HOW ESTABLISHED NAIL SET,
INFORMATION PER DENNIS KUNZE, 1-6-92, NORTHEAST CORNER, NORTHWEST QUARTER, NORTHWEST QUARTER, SECTION 25, TOWNSHIP 84N, RANGE 3 WEST OF THE 5TH PRINCIPAL MERIDIAN, JONES COUNTY, IOWA.

CORNERS TO BE INDEXED

CORNER SECTION TOWNSHIP RANGE



OFFICE FILE NO.

I hereby declare that this plat, survey or report was made by me or under my direct personal supervision and that I am a duly registered Land Surveyor under the laws of the State of Iowa.

Signed: _____

SEAL

JONES COUNTY ENGINEER'S OFFICE

19501 HWY. 64,
ANAMOSA, IOWA,
52205 (319)462-3785