

2002 2353

FILED
RECORDERS OFFICE
JONES COUNTY IOWA

2002 JUN 28 AM 8:16

MARIE KRUTZFIELD
RECORDER *NO FEE*

J.D. TJEPKES, LS. JONES COUNTY ENGINEER'S OFFICE, 19501 HWY. 64, ANAMOSA, IOWA, 52205 (319)462-3785

UNITED STATES PUBLIC LAND SURVEY CORNER CERTIFICATE

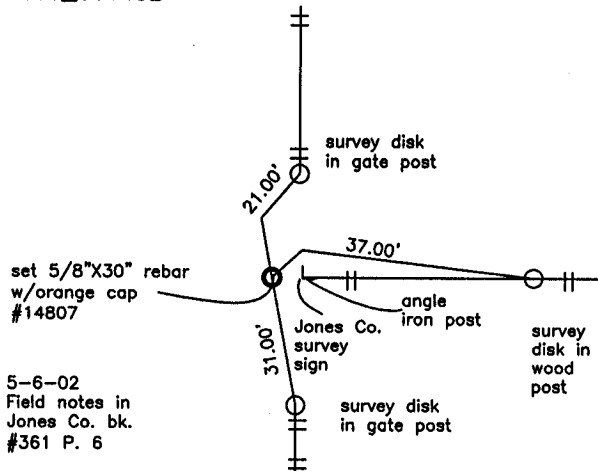
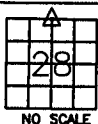
LAND SURVEY MONUMENTS SITUATED IN SECTION 28, TOWNSHIP 84
NORTH, RANGE 3 WEST OF THE 5TH P.M., JONES COUNTY, IOWA

CORNERS TO BE INDEXED

CORNER SECTION TOWNSHIP RANGE
N1/4 28 84 3W

OFFICE FILE NO. 1143

84328c_061402



PREVIOUSLY RECORDED IN BOOK NA, PAGE NA
MONUMENT DESCRIPTION AND HOW ESTABLISHED

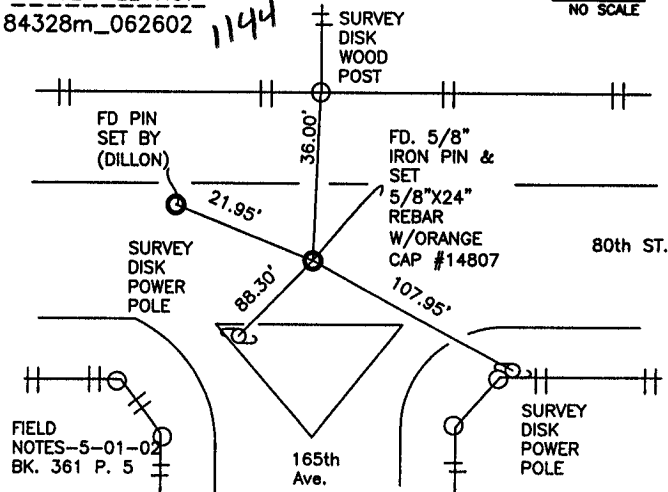
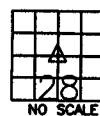
N1/4 SEC.28 T84N R3W SPLIT NORTH LINE OF SEC. 28 & FOUND 2-LIMESTONES STACKED ALONGSIDE OF ANGLE IRON POST. SET 5/8"X30" REBAR W/ORANGE CAP #14807 ALONG SIDE OF STONES. TIED OUT AS INDICATED.

CORNERS TO BE INDEXED

CORNER SECTION TOWNSHIP RANGE
center 28 84N 3W

OFFICE FILE NO. 1144

84328m_062602



PREVIOUSLY RECORDED IN BOOK NA, PAGE NA
MONUMENT DESCRIPTION AND HOW ESTABLISHED

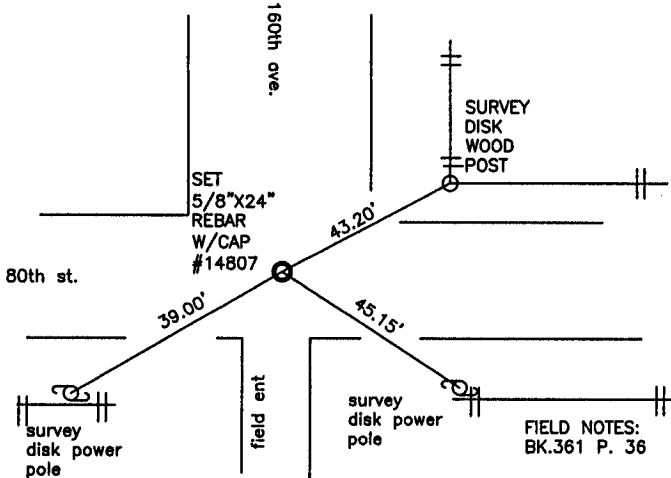
FD.5/8" IRON PIN AT CENTER SEC.28 T84N R3W ON CENTERLINE ROAD 165th AVE. & 80th ST. 24" BELOW PRESENT ROAD SURFACE, PER ROAD RECORDS IN JONES COUNTY ENGINEER'S OFFICE. SET 5/8"X24" REBAR W/ORANGE CAP #14807 ON TOP OF ORIGINAL PIN, AT CENTER OF SECTION 28 T84N R3W. TIED AS INDICATED.

CORNERS TO BE INDEXED

CORNER SECTION TOWNSHIP RANGE
E1/4 28 84N 3W

OFFICE FILE NO. 1145

84328o_062602



PREVIOUSLY RECORDED IN BOOK NA, PAGE NA
MONUMENT DESCRIPTION AND HOW ESTABLISHED

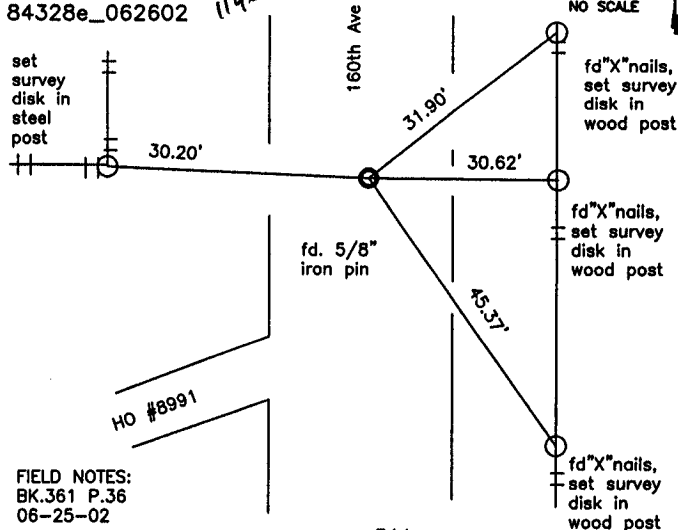
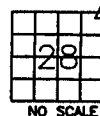
SET 5/8"X24" REBAR W/ORANGE CAP #14807 AT E1/4 SEC.28 T84N R3W FROM ROAD RECORD IN JONES CO. ENGINEER'S OFFICE, AND PHYSICAL EVIDENCE. TIED AS INDICATED.

CORNERS TO BE INDEXED

CORNER SECTION TOWNSHIP RANGE
NE 28 84N 3W

OFFICE FILE NO. 1146

84328e_062602



PREVIOUSLY RECORDED IN BOOK 311, PAGE 218
MONUMENT DESCRIPTION AND HOW ESTABLISHED

FD. 5/8" IRON PIN AT NE COR. SEC.28 T84N R3W PER L.S. 7036(MICKELSON) TIES RECORDED AT JONES CO. RECORDER'S OFFICE IN BOOK 311 PAGE 218. RETIED AS INDICATED.

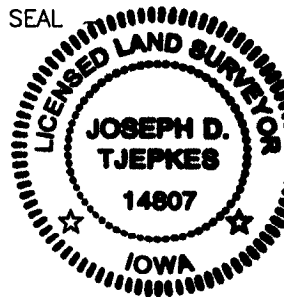
I hereby declare that this plat, survey or report was made by me or under my direct personal supervision and that I am a duly registered Land Surveyor under the laws of the State of Iowa.

Signed:

Joseph D. Tjepkes 6-27-02

Joseph D. Tjepkes L.S. Iowa Reg. No. 14807
My Registration Renewal Date is December 31, 2002

SEAL



J.D. TJEPKES LS 14807
JONES COUNTY
ENGINEER'S OFFICE

19501 HWY. 64,
ANAMOSA, IOWA,
52205 (319)462-3785