

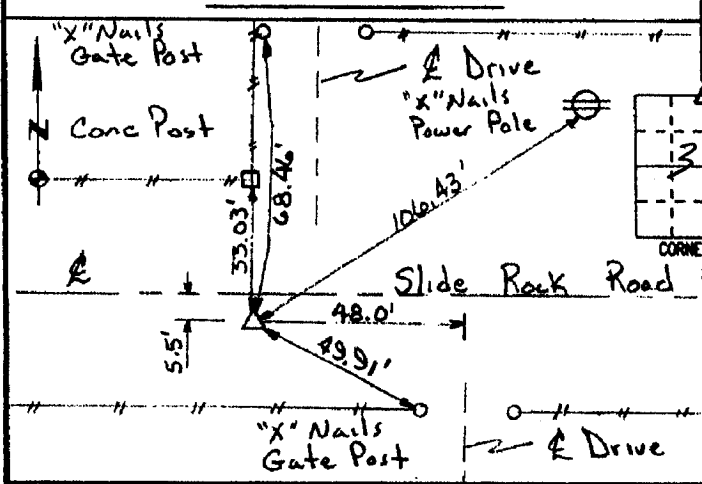
2003 1088  
 FILED  
 RECORDERS OFFICE  
 JONES COUNTY IOWA  
 03 MAR 13 PM 1:39  
 MARIE KRUTZFIELD  
 RECORDER 6.00 Pd

PREPARED BY HALL & HALL ENGINEERS, INC. 209 29TH STREET N.E. CEDAR RAPIDS, IOWA 52402 (319) 362-9548

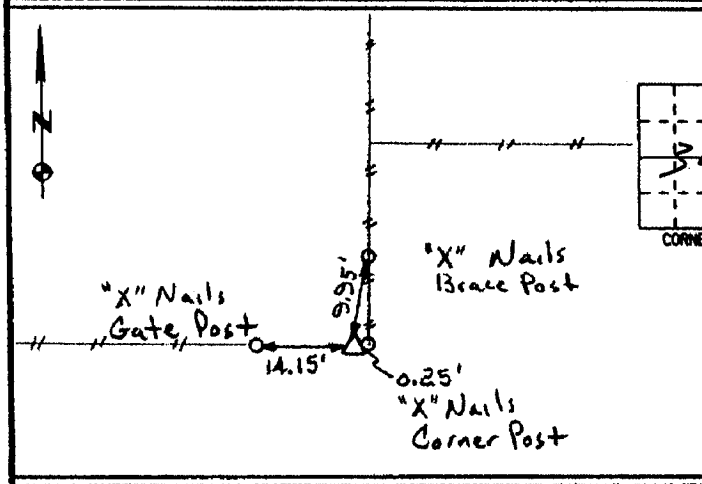
LAND SURVEY MONUMENTS SITUATED IN SECTION 31, TOWNSHIP 84 NORTH,  
 RANGE 3 WEST, OF THE FIFTH PRINCIPAL MERIDIAN, Jones COUNTY IOWA.

RECOVERY TIE DRAWING

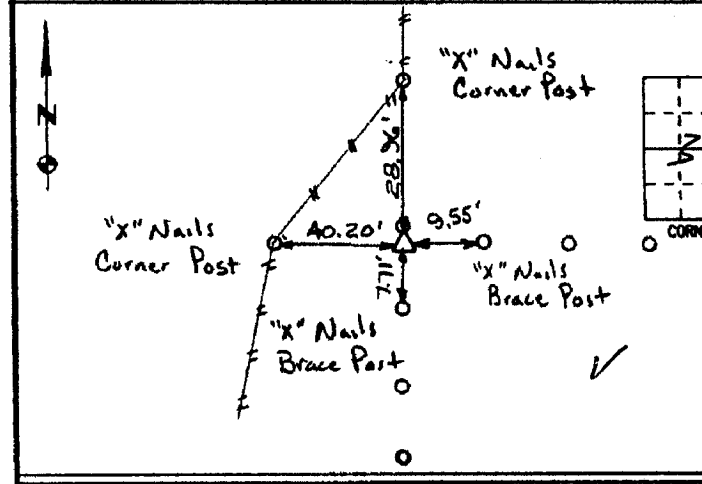
MONUMENT DESCRIPTION AND REMARKS:



North Quarter Corner  
 REASON FOR PREPARING CERTIFICATE: (A) B, C OR D  
 PREVIOUS BOOK \_\_\_\_\_ PAGE \_\_\_\_\_  
 Set 1/2" rebar w/red cap  
 # 11954  
 84331c-022703  
 1133 ✓



Center  
 REASON FOR PREPARING CERTIFICATE: (A) B, C OR D  
 PREVIOUS BOOK \_\_\_\_\_ PAGE \_\_\_\_\_  
 Found Stone 5' x 7" x 15"  
 Set 1/2" rebar along west side  
 84331m-022703  
 1348 ✓



Southeast Corner  
 REASON FOR PREPARING CERTIFICATE: (A) B, C OR D  
 PREVIOUS BOOK \_\_\_\_\_ PAGE \_\_\_\_\_  
 Found SCM 2" above ground  
 84331y-022703  
 558 ✓

I hereby certify that this land surveying document was prepared and the related survey work was performed by me or under my direct personal supervision and that I am a duly licensed Land Surveyor under the laws of the State of Iowa.  
 Signed: Daniel J. Johnson Date: 2-27-03  
 Daniel J. Johnson, L.S. 11954  
 My license renewal date is December 31, 2004  
 Pages or sheets covered by this seal: 1  
 (Entire submission unless specified here)

- REASON FOR PREPARING CERTIFICATE:
- A) THERE IS NO CERTIFICATE FOR THE CORNER ON FILE WITH THE RECORDER OF THE COUNTY IN WHICH THE CORNER IS LOCATED.
  - B) CORNER POSITION DIFFERS FROM THAT SHOWN IN THE PUBLIC RECORDS OF THE COUNTY IN WHICH THE CORNER IS LOCATED.
  - C) THE CORNER MONUMENT HAS BEEN REPLACED OR MODIFIED.
  - D) THE REFERENCE TIES REFERRED TO IN AN EXISTING PUBLIC RECORD ARE INCORRECT OR MISSING.

SHEET TITLE: U.S. PUBLIC LAND SURVEY CORNER CERTIFICATE  
 PROJECT TITLE: Austin - Plat of Survey

HALL AND HALL ENGINEERS, INC.  
 209 29TH STREET N.E.  
 CEDAR RAPIDS, IOWA 52402  
 (319) 362-9548  
 SCALE: NONE  
 P NO 0T34  
 R NO 5346

REV	DATE	BY	APP	DATE

✓

2002 2020  
FILED  
RECORDERS OFFICE  
JONES COUNTY IOWA

6-3-02  
SDP

02 JUN -3 AM 11:45

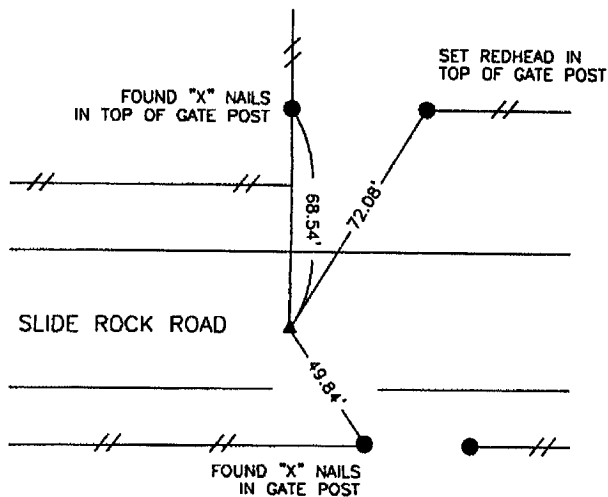
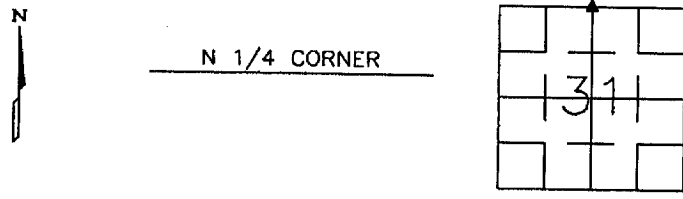
MARIE KRUTZFIELD  
RECORDER 6.00 pd

PREPARED BY  
STEPHEN MICHAEL BRAIN, BRAIN ENGINEERING, INC., 777 10TH STREET, MARION, IOWA 52302 PH. (319) 373-1318

# UNITED STATES PUBLIC LAND SURVEY CORNER CERTIFICATE

LAND SURVEY MONUMENTS SITUATED IN SECTION 31, TOWNSHIP 84 NORTH  
RANGE 3 WEST OF THE 5TH P.M., \_\_\_\_\_ JONES \_\_\_\_\_ COUNTY, IOWA.

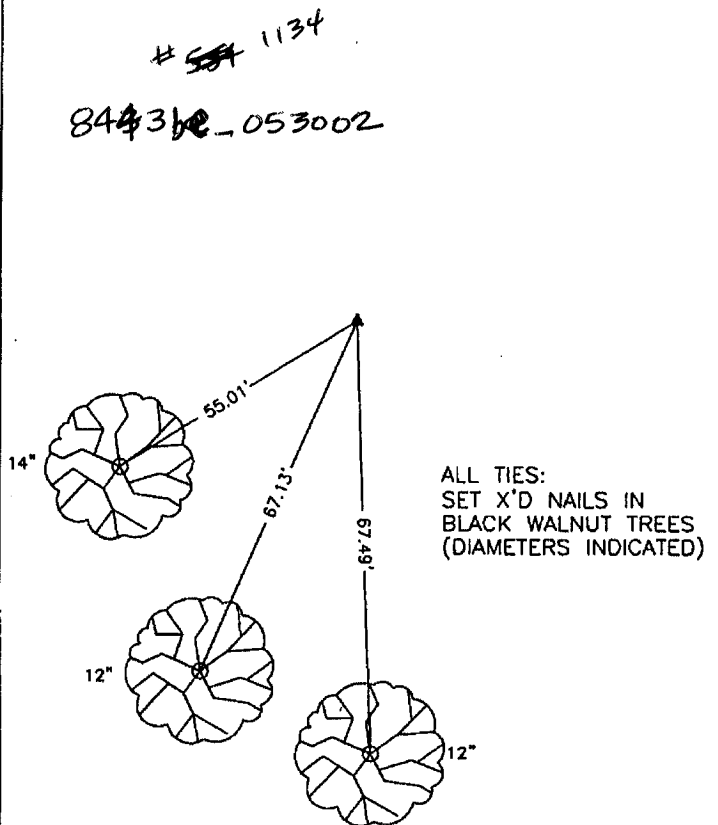
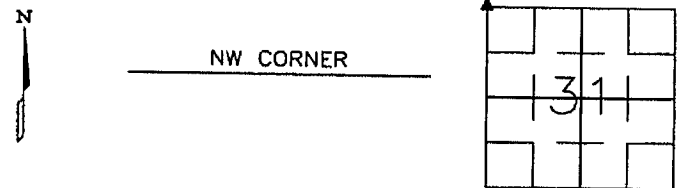
NO SCALE



#1023

84331c - 053002

NO SCALE



ALL TIES:  
SET X'D NAILS IN  
BLACK WALNUT TREES  
(DIAMETERS INDICATED)

PREVIOUSLY RECORDED IN BOOK \_\_\_\_\_ PAGE \_\_\_\_\_

MONUMENT DESCRIPTION AND HOW ESTABLISHED \_\_\_\_\_

FOUND 1/2" REBAR W/ RED CAP AT SURFACE OF ROAD

(CAP NUMBER IS ILLEGIBLE)

PREVIOUSLY RECORDED IN BOOK \_\_\_\_\_ PAGE \_\_\_\_\_

MONUMENT DESCRIPTION AND HOW ESTABLISHED  
SET 1/2" REBAR W/YELLOW CAP #9647 AT INTERSECTION  
EXISTING FENCE LINE ALONG WEST LINE OF NW frl. 1/4  
OF SECTION 30-T84N-R3W AND LINE FROM N 1/4 CORNER  
OF SECTION 31-T84N-R3W ALONG CENTERLINE OF SLIDE  
ROCK ROAD PROJECTED WESTWARD.

- A.THERE IS NO CERTIFICATE FOR THE CORNER ON FILE WITH THE RECORDER OF THE COUNTY IN WHICH THE CORNER IS LOCATED
- B.THE SURVEYOR IN RESPONSIBLE CHARGE OF THE LAND SURVEYING ACCEPTS A CORNER POSITION WHICH DIFFERS FROM THAT SHOWN IN THE PUBLIC RECORDS OF THE COUNTY IN WHICH THE CORNER IS LOCATED.
- C.THE CORNER MONUMENT IS REPLACED OR MODIFIED IN ANY WAY.
- D.THE REFERENCE TIES REFERRED TO IN AN EXISTING PUBLIC RECORD ARE NOT CORRECT.



I hereby certify that this land surveying document and the related survey work was performed by me or under my direct personal supervision and that I am a duly licensed Land Surveyor under the laws of the State of Iowa.  
Date 5/30/02  
Stephen Michael Brain, L.S.  
My License Renewal Date is December 31, 2002  
License Number 9647  
Pages or sheets covered by this seal: 1/1

CORNERS TO BE INDEXED

CORNER	SECTION	TOWNSHIP	RANGE
N 1/4 CORNER	31	T84N	R3W
NW CORNER	31	T84N	R3W

**BRAIN ENGINEERING, INC.**

777 10TH STREET  
MARION, IOWA 52302 28822-10  
(319) 373-1318

#10