

COPY

Jones County Marie Krutzfield  
 Fee Book 2011 1108  
 04/29/2011 @1110AM # Pages 1  
 ZSC SEC COR CERT  
 Total Fees: \$9.00

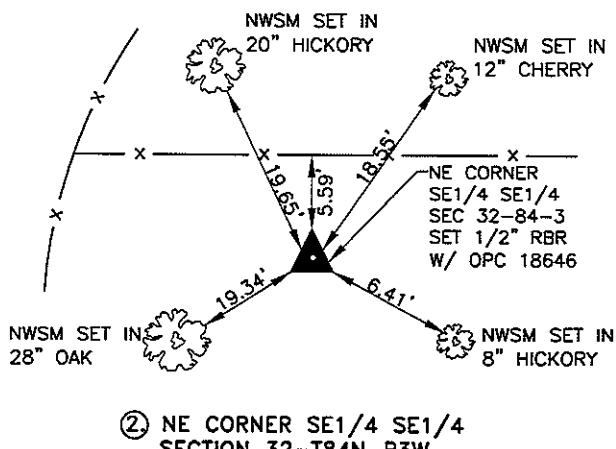
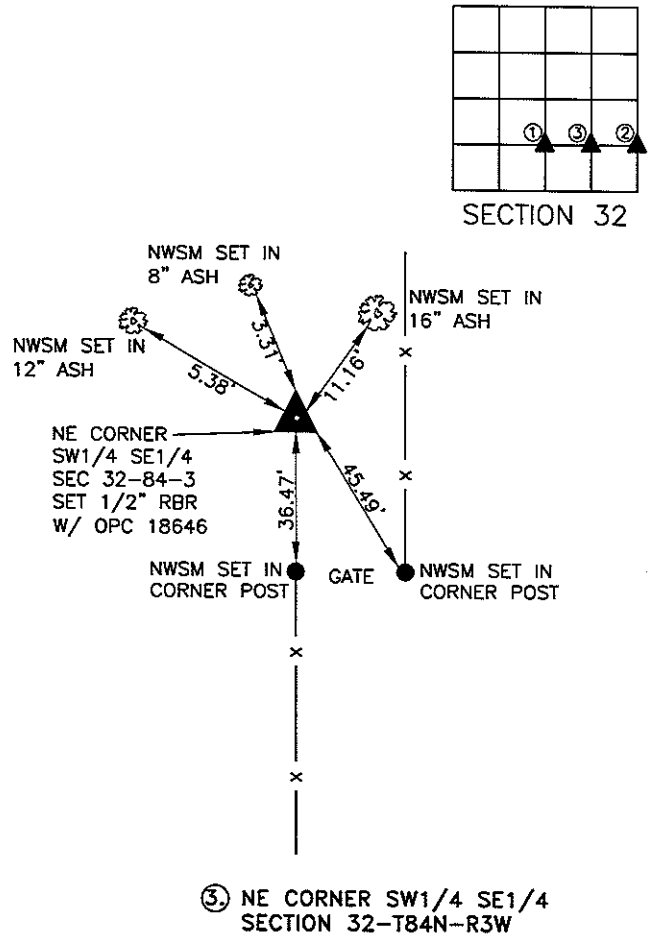
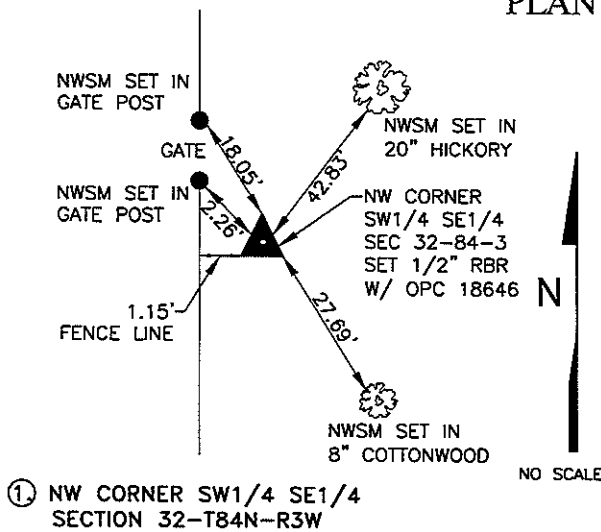
Prepared By: R. Rodney Klien, L.S. #18646 Anderson-Bogert Engineers & Surveyors, Inc. 4001 River Ridge Dr. N.E. Cedar Rapids, Iowa 52402 Phone: (319) 377-4629

# UNITED STATES PUBLIC LAND SURVEY CORNER CERTIFICATE OF

Land Survey Monuments situated in Section 32, Township 84-N, Range 3-W, of the Fifth Principal Meridian, JONES County, Iowa.  
 Previously recorded in NOT PREVIOUSLY RECORDED in County Recorders Office.

Monument Description and Remarks: ① ② AND ③ SET 1/2" RBR W/OPC #18646. CORNER NOT PREVIOUSLY RECORDED.

## PLAN - VIEW



\*NWSM= NAIL WITH SURVEY MARKER

I hereby certify that this land surveying document was prepared and the related survey work was performed by me or under my direct personal supervision and that I am a duly licensed Land Surveyor under the laws of the State of Iowa

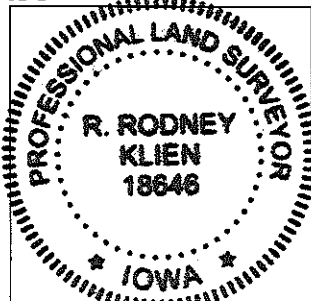
Signature: R. Rodney Klien Date: 4-26-11  
 Printed or typed name: R. Rodney Klien

License number: #18646

My license renewal date is December 31, 2011

Pages or sheets covered by this seal: 1 of 1

SEAL



**ANDERSON-BOGERT**  
 Engineers & Surveyors, Inc.  
 4001 River Ridge Drive N.E. Cedar Rapids, Iowa 52402  
 Phone: (319) 377-4629

Corners	Section	Twp	Range
NW CORNER SW1/4 SE1/4	32	84N	3W
NE CORNER SE1/4 SE1/4	32	84N	3W
NE CORNER SW1/4 SE1/4	32	84N	3W

- THERE IS NO CERTIFICATE FOR THE CORNER ON FILE WITH THE RECORDER OF THE COUNTY IN WHICH THE CORNER IS LOCATED.
- THE SURVEYOR IN RESPONSIBLE CHARGE OF THE LAND SURVEYING ACCEPTS A CORNER POSITION WHICH DIFFERS FROM THAT SHOWN IN THE PUBLIC RECORDS OF THE COUNTY IN WHICH THE CORNER IS LOCATED.
- THE CORNER MONUMENT IS REPLACED OR MODIFIED IN ANY WAY.
- THE REFERENCE TIES IN AN EXISTING PUBLIC RECORD ARE INCORRECT OR MISSING.