

2002 2547

FILED
RECORDERS OFFICE
JONES COUNTY IOWA

2002 JL 12 AM 9:10

MARIE KRUTZFIELD
RECORDER NO FEE

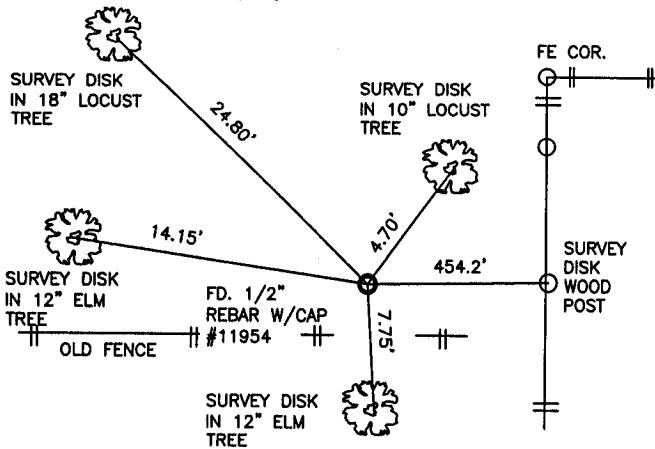
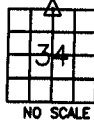
J.D. Tjepkes, LS. JONES COUNTY ENGINEER'S OFFICE, 19501 HWY. 64, ANAMOSA, IOWA, 52205 (319)462-3785

UNITED STATES PUBLIC LAND SURVEY CORNER CERTIFICATE

LAND SURVEY MONUMENTS SITUATED IN SECTION 34, TOWNSHIP 84
NORTH, RANGE 3 WEST OF THE 5TH P.M., JONES COUNTY, IOWA

CORNERS TO BE INDEXED

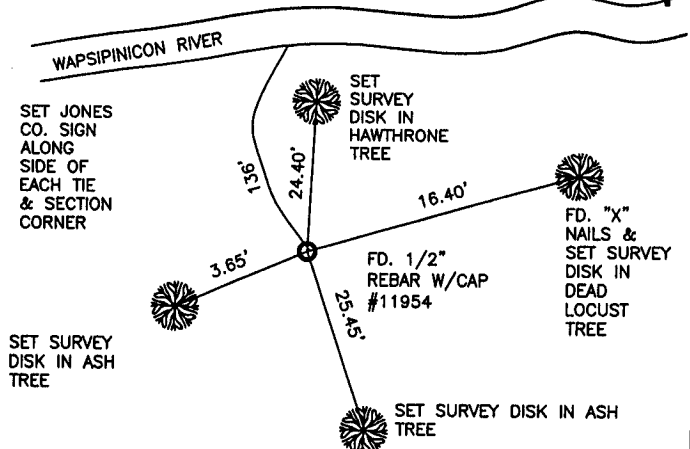
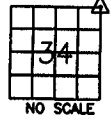
CORNER SECTION TOWNSHIP RANGE
N1/4 34 84N 3W
OFFICE FILE NO.
84334c_071102 529



PREVIOUSLY RECORDED IN BOOK 1999, PAGE 3191
MONUMENT DESCRIPTION AND HOW ESTABLISHED _____
FD. 1/2" REBAR W/CAP #11954(D.JOHNSON) FROM RECORDED TIES.
RESET SURVEY DISKS AT "X" NAILS LOCATION AND SET JONES CO. SIGN
ALONG SIDE OF PIN. RETIED AS INDICATED.
FIELD BK.#361 P.7 FIELD WORK COMPLETED 5-15-02

CORNERS TO BE INDEXED

CORNER SECTION TOWNSHIP RANGE
NE 34 84N 3W
OFFICE FILE NO.
84334e_071102 529



PREVIOUSLY RECORDED IN BOOK NA, PAGE NA
MONUMENT DESCRIPTION AND HOW ESTABLISHED _____
FD. 1/2" REBAR W/CAP #11954(JOHNSON) FROM TIES IN JONES CO.
ENGINEERS OFFICE. RETIED AS INDICATED.
FIELD WORK COMPLETED 5-14-02
FIELD BK. #361 P.8

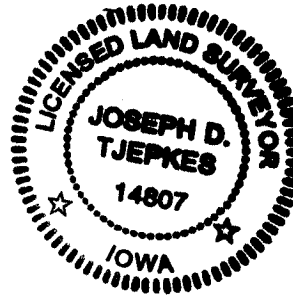
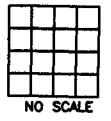
CORNERS TO BE INDEXED

CORNER SECTION TOWNSHIP RANGE
OFFICE FILE NO. _____



CORNERS TO BE INDEXED

CORNER SECTION TOWNSHIP RANGE
OFFICE FILE NO. _____



PREVIOUSLY RECORDED IN BOOK _____, PAGE _____
MONUMENT DESCRIPTION AND HOW ESTABLISHED _____

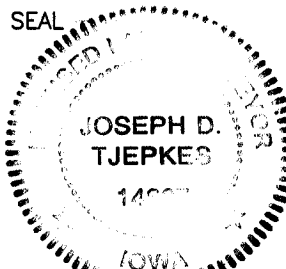
PREVIOUSLY RECORDED IN BOOK _____, PAGE _____
MONUMENT DESCRIPTION AND HOW ESTABLISHED _____

I hereby declare that this plat, survey or report was made by me or under my direct personal supervision and that I am a duly registered Land Surveyor under the laws of the State of Iowa.

Signed:

Joseph D. Tjepkes 7-11-02

Joseph D. Tjepkes L.S. Iowa Reg. No. 14807
My Registration Renewal Date is December 31, 2002



J.D. Tjepkes LS 14807
JONES COUNTY
ENGINEER'S OFFICE

19501 HWY. 64,
ANAMOSA, IOWA,
52205 (319)462-3785

SECTION CORNER CERTIFICATE

OF
 LAND SURVEY MONUMENTS SITUATED IN SECTION 27, TOWNSHIP 84 NORTH,
 RANGE 3 WEST, OF THE FIFTH PRINCIPAL MERIDIAN, JONES, COUNTY, IOWA.

PREVIOUSLY RECORDED IN BOOK _____ AT PAGE _____

FOR RECORDER'S USE

REASON FOR PREPARING CERTIFICATE:

- A) THERE IS NO CERTIFICATE FOR THE CORNER ON FILE WITH THE RECORDER OF THE COUNTY IN WHICH THE CORNER IS LOCATED.
- B) CORNER POSITION DIFFERS FROM THAT SHOWN IN THE PUBLIC RECORDS OF THE COUNTY IN WHICH THE CORNER IS LOCATED.
- C) THE CORNER MONUMENT HAS BEEN REPLACED OR MODIFIED.
- D) THE REFERENCE TIES REFERRED TO IN AN EXISTING PUBLIC RECORD ARE INCORRECT.

1999 3191
 FILED
 RECORDERS OFFICE
 JONES COUNTY IOWA

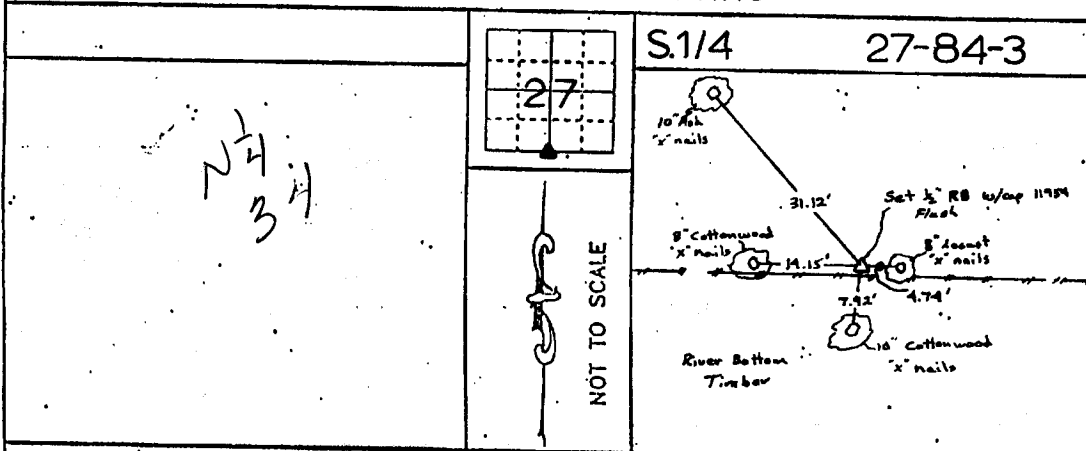
99 SEP -8 AM 10:23

MARIE KRUTZFIELD *6.00 pd*
 RECORDER

MONUMENT DESCRIPTION AND REMARKS:

South 1/4 Section 27 - Township 84 North - Range 3 West Set 1/2 Rebar w/cap 11954
 Flush in as River Bottom Timber. An old fence is 1.5' South of Corner

RECOVERY TIE DRAWING



I, DANIEL J. JOHNSON, CERTIFY THAT THE CORNER LOCATION(S) SHOWN ON THIS RECORD WERE DETERMINED BY ME OR UNDER MY DIRECTION AND CONTROL AND THAT THIS U.S. PUBLIC LAND SURVEY MONUMENT RECORD IS CORRECT AND COMPLETE TO THE BEST OF MY KNOWLEDGE AND BELIEF.

Daniel J. Johnson 9-8-99
 DANIEL J. JOHNSON LS. NO 11954 DATE



| | | |
|---|--|---|
| <p><small>△ GOVERNMENT CORNER ○ PROPERTY CORNER FOUND 1/2" x 3/4" w/ L.S. CAP SET - - - EXISTING FENCE LINE ——— PROPERTY LINE</small></p> | <p>U.S. PUBLIC LAND SURVEY RECORD</p> <p>PROJECT FILE: KNAPP</p> | <p>HALL AND HALL ENGINEERS, INC. 208 20TH STREET N.E. CEDAR RAPIDS, IOWA 52402 (319) 362-9548</p> |
| <p>DATE: 11/30/94 SCALE: NONE</p> | <p>BY: DJJ CHECKED: DJJ APPROVED: DJJ</p> | <p>FILE NO: 5139</p> |