

2002 2698
FILED
RECORDERS OFFICE
JONES COUNTY IOWA

02 JUL 22 AM 11:44

MARIE KRUTZFIELD
RECORDER 6.00pd

PREPARED BY
STEPHEN MICHAEL BRAIN, BRAIN ENGINEERING, INC., 777 10TH STREET, MARION, IOWA 52302 PH. (319) 373-1318

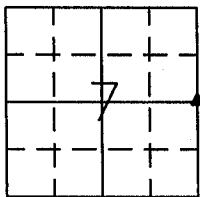
UNITED STATES PUBLIC LAND SURVEY CORNER CERTIFICATE

LAND SURVEY MONUMENTS SITUATED IN SECTION 7, TOWNSHIP 84 NORTH
RANGE 3 WEST OF THE 5TH P.M., _____ JONES _____ COUNTY, IOWA.

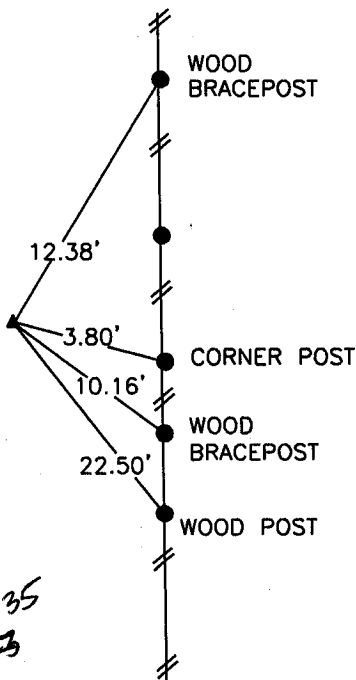
NO SCALE



E 1/4 CORNER



ALL TIES: SET "X" NAILS



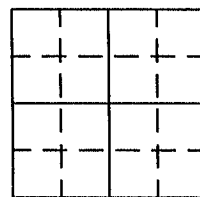
843070-071902

PREVIOUSLY RECORDED IN BOOK _____ PAGE _____

MONUMENT DESCRIPTION AND HOW ESTABLISHED _____

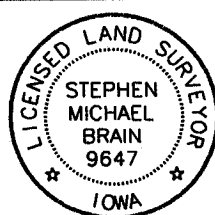
FOUND BROKEN DOT MONUMENT 6" DEEP.

NO SCALE



PREVIOUSLY RECORDED IN BOOK _____ PAGE _____

MONUMENT DESCRIPTION AND HOW ESTABLISHED _____



I hereby certify that this land surveying document and the related survey work was performed by me or under my direct personal supervision and that I am a duly licensed Land Surveyor under the laws of the State of Iowa.

Signed *Stephen Michael Brain* Date 7/19/02
Stephen Michael Brain, L.S.
My License Renewal Date is December 31, 2002
License Number 9647
Pages or sheets covered by this seal: 1/1

- A. THERE IS NO CERTIFICATE FOR THE CORNER ON FILE WITH THE RECORDER OF THE COUNTY IN WHICH THE CORNER IS LOCATED
- B. THE SURVEYOR IN RESPONSIBLE CHARGE OF THE LAND SURVEYING ACCEPTS A CORNER POSITION WHICH DIFFERS FROM THAT SHOWN IN THE PUBLIC RECORDS OF THE COUNTY IN WHICH THE CORNER IS LOCATED.
- C. THE CORNER MONUMENT IS REPLACED OR MODIFIED IN ANY WAY.
- D. THE REFERENCE TIES REFERRED TO IN AN EXISTING PUBLIC RECORD ARE NOT CORRECT.

CORNERS TO BE INDEXED

CORNER	SECTION	TOWNSHIP	RANGE
E 1/4 CORNER	7	T84N	R3W

BRAIN ENGINEERING, INC.

777 10TH STREET
MARION, IOWA 52302 25512-10
(319) 373-1318

CJM 7/19/02

THIS IS NOT A CERTIFICATION

JONES COUNTY ENGINEER'S OFFICE, 19501 HWY. 64, ANAMOSA, IOWA, 52205 (319)462-3785

UNITED STATES PUBLIC LAND SURVEY CORNER CERTIFICATE

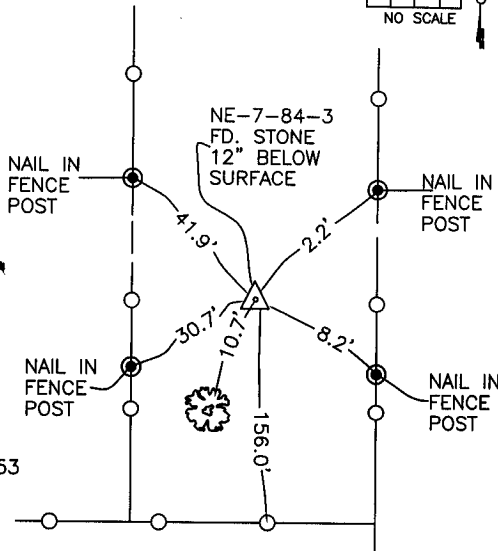
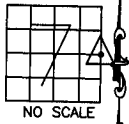
LAND SURVEY MONUMENTS SITUATED IN SECTION 7, TOWNSHIP 84
NORTH, RANGE 3 WEST OF THE 5TH P.M., JONES COUNTY, IOWA

CORNERS TO BE INDEXED

CORNER SECTION TOWNSHIP RANGE
NORTHEAST 7 84N 3W

OFFICE FILE NO.

843078_010104.TIF



1135

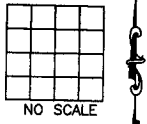
REF:
DOT-PROJ. NO.
F-64-1(2)--20-53

PREVIOUSLY RECORDED IN BOOK _____, PAGE _____
MONUMENT DESCRIPTION AND HOW ESTABLISHED FOUND _____
10"X10"X12" STONE 12" BELOW SURFACE IN AREA AS INDICATED
SET REFERENCE POINTS AND TIED OUT AS INDICATED. NORTHEAST
CORNER SECTION 7, TOWNSHIP 84 NORTH, RANGE 3 WEST OF THE
5TH PRINCIPAL MERIDIAN, JONES COUNTY, IOWA.

CORNERS TO BE INDEXED

CORNER SECTION TOWNSHIP RANGE

OFFICE FILE NO.

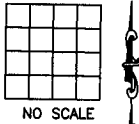


PREVIOUSLY RECORDED IN BOOK _____, PAGE _____
MONUMENT DESCRIPTION AND HOW ESTABLISHED _____

CORNERS TO BE INDEXED

CORNER SECTION TOWNSHIP RANGE

OFFICE FILE NO.

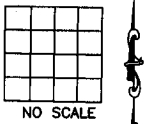


PREVIOUSLY RECORDED IN BOOK _____, PAGE _____
MONUMENT DESCRIPTION AND HOW ESTABLISHED _____

CORNERS TO BE INDEXED

CORNER SECTION TOWNSHIP RANGE

OFFICE FILE NO.



PREVIOUSLY RECORDED IN BOOK _____, PAGE _____
MONUMENT DESCRIPTION AND HOW ESTABLISHED _____

~~I hereby declare that this plat, survey or report was made by me or under my direct personal supervision and that I am a duly registered Land Surveyor under the laws of the State of Iowa.~~

Signed: _____

SEAL

JONES COUNTY
ENGINEER'S OFFICE

19501 HWY. 64,
ANAMOSA, IOWA,
52205 (319)462-3785

D