

2000 2259

FILED
RECORDERS OFFICE
JONES COUNTY IOWA

00 JUL 21 AM 10:15

MARIE KRUTZFIELD
RECORDER 6 00 Pd

Jackson

CLARENCE J. WALTON, BRAIN ENGINEERING, INC., 777 10TH STREET, MARION, IOWA 52302 PH. (319) 373-1318

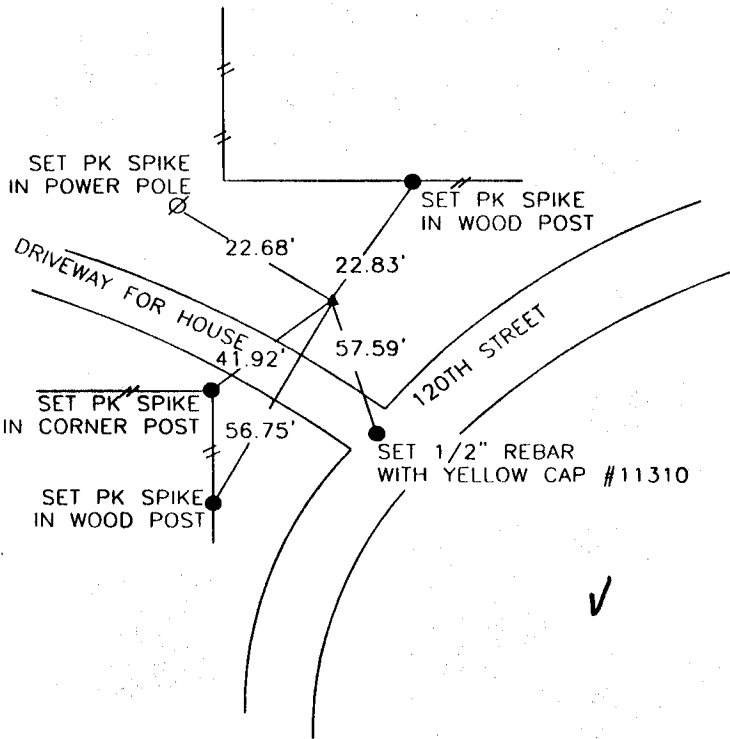
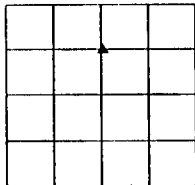
UNITED STATES PUBLIC LAND SURVEY CORNER CERTIFICATE

LAND SURVEY MONUMENTS SITUATED IN SECTION 7, TOWNSHIP 84 NORTH
RANGE 3 WEST OF THE 5TH P.M., JONES COUNTY, IOWA.

NO SCALE



NW CORNER SW 1/4 NE 1/4



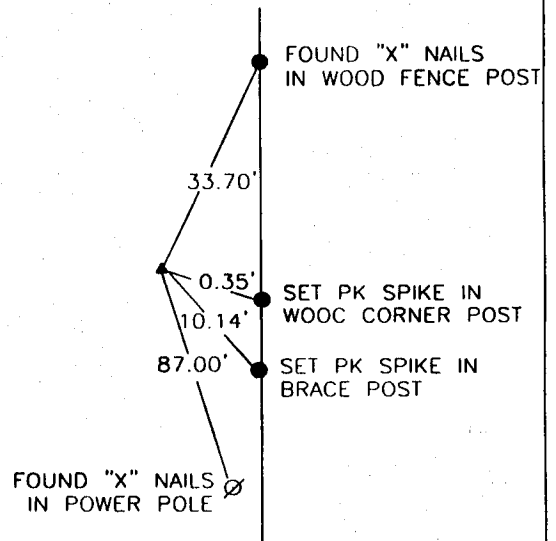
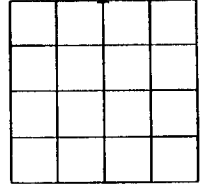
PREVIOUSLY RECORDED IN BOOK _____ PAGE _____

MONUMENT DESCRIPTION AND HOW ESTABLISHED _____
SET 1/2" REBAR WITH YELLOW CAP #11310.

NO SCALE

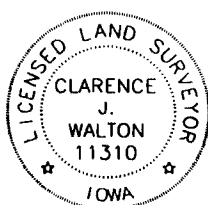


N 1/4 CORNER



PREVIOUSLY RECORDED IN BOOK _____ PAGE _____

MONUMENT DESCRIPTION AND HOW ESTABLISHED _____
SET 1/2" REBAR WITH YELLOW CAP #11310



I hereby certify that this land surveying document and the related survey work was performed by me or under my direct personal supervision and that I am a duly licensed Land Surveyor under the laws of the State of Iowa.

Signed *Clarence J. Walton* Date 7/17/05
Clarence J. Walton, L.S.
My License Renewal Date is December 31, 1999-2001
License Number 11310
Pages or sheets covered by this seal: 1 of 1

CORNER	SECTION	TOWNSHIP	RANGE
NW CORNER	7	T84N	R3W
SW 1/4 NE 1/4	7	T84N	R3W
N 1/4 CORNER	7	T84N	R3W

BRAIN ENGINEERING, INC.

777 10TH STREET
MARION, IOWA 52302 25519-10
(319) 373-1318