

Jones County Marie Krutzfield
 Fee Book 2011 0860
 03/31/2011 @1036AM # Pages 1
 ZSC SEC COR CERT
 Total Fees: \$9.00

Prepared by Wm. Burger LandSurveyors 510 3rd Street West Court, Worthington, Iowa Phone 563 - 855 2028

UNITED STATES PUBLIC LAND SURVEY CORNER CERTIFICATE

Land Survey Monuments situated in Section 11, Township 86N, Range 3W, of the Fifth Principal Meridian, Jones County, Iowa. Previously recorded in N/A in the Office of the County Recorder

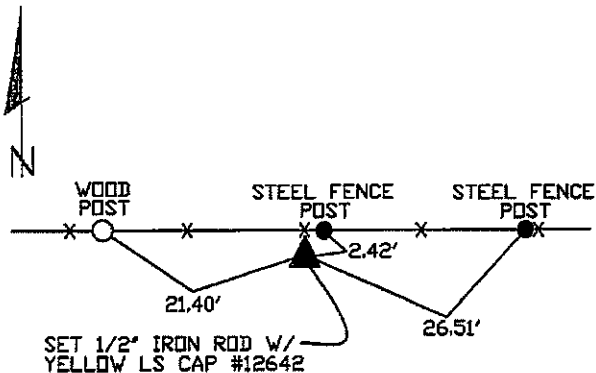
Monument Description and Remarks:

NW CORNER NE1/4 SW1/4 - SET 1/2" IRON ROD W/YELLOW LS CAP #12642 - SET ON LINE AND MIDWAY BETWEEN THE W1/4 CORNER AND THE CENTER OF SECTION

SW CORNER NE1/4 SW1/4 - SET 1/2" IRON ROD W/YELLOW LS CAP #12642 - RUN STRAIGHT LINE FROM OPPOSITE 1/4 1/4 CORNER AND SET AT POINT OF INTERSECTION

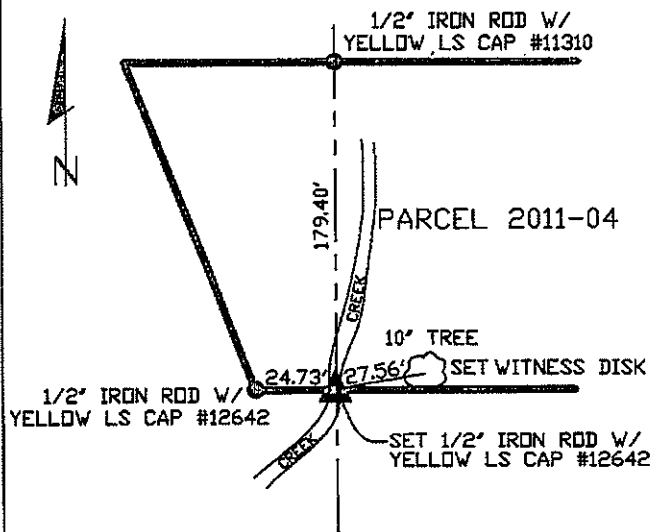
PLAN VIEW

NW CORNER NE1/4 SW1/4

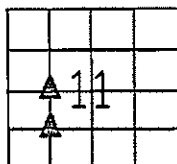


SET NAIL W/WITNESS DISK AT ALL TIE POINTS

SW CORNER NE1/4 SW1/4



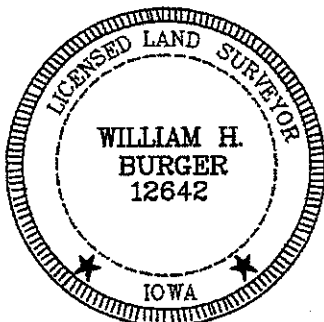
SET NAIL W/WITNESS DISK AT ALL TIE POINTS



SEC. 11 TWP. 86N RANGE 3W

CORNERS TO BE INDEXED

NW CORNER NE1/4 SW1/4	11	86N	3W
SW CORNER NE1/4 SW1/4	11	86N	3W



I hereby certify that this land surveying document was prepared and related survey work was performed by me or under my direct personal supervision and that I am a duly licensed Land Surveyor under the laws of the State of Iowa.

William H. Burger 3/30/11
 William H. Burger Date

License number 12642

My license renewal date is December 31, 2012

Pages or Sheets covered by this seal: Sheet 1 of 1