

LOVELL

Prepared by Wm. Burger LandSurveyors

510 3rd Street West Court, Worthington, Iowa

Phone 563 - 855 2028

UNITED STATES PUBLIC LAND SURVEY CORNER CERTIFICATE

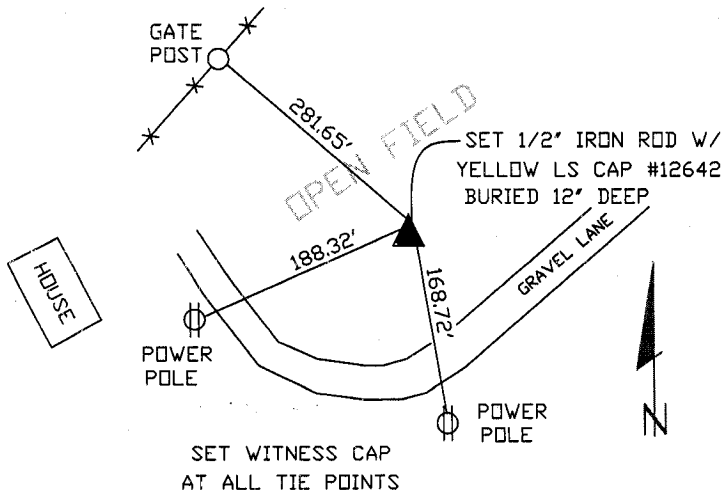
Land Survey Monuments situated in Section 13, Township 86N, Range 3W, of the Fifth Principal Meridian, Jones County, Iowa. Previously recorded in N/A in the Office of the County Recorder

Monument Description and Remarks: (No Corner Certificates found at the County Recorders Office)

SW CORNER NW1/4 NW1/4 - SET 1/2" IRON ROD W/ YELLOW LS CAP #12642 BURIED 12" DEEP - SET ON LINE AND MIDWAY BETWEEN THE NW CORNER AND THE W1/4 CORNER

PLAN VIEW

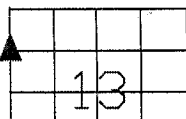
SW CORNER NW1/4 NW1/4



(1703) v2

86314j_052505.tif

(SE, NE, NW-14-86-3)



CORNERS TO BE INDEXED

SW CORNER NW1/4 NW1/4 13 86N 3W