

2005 1430

FILED  
RECORDERS OFFICE  
JONES COUNTY IOWA

05 APR 25 PM 1:54

MARIE KRUTZFIELD  
RECORDER 7.00 Pd

any ground  
not in  
the  
12/10/05

Prepared by Wm. Burger Land Surveyors 510 3rd Street West Court, Worthington, Iowa Phone 563 - 855 2028

UNITED STATES PUBLIC LAND SURVEY CORNER CERTIFICATE

Land Survey Monuments situated in Section 13, Township 86N, Range 3W, of the Fifth Principal Meridian, Jones County, Iowa. Previously recorded in SEE NOTE in the Office of the County Recorder

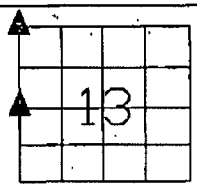
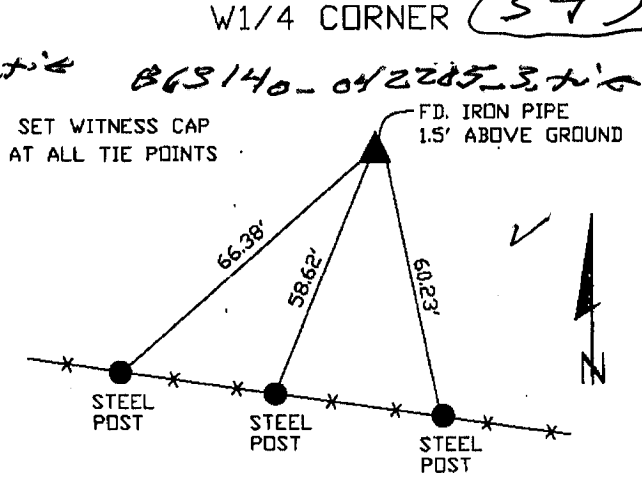
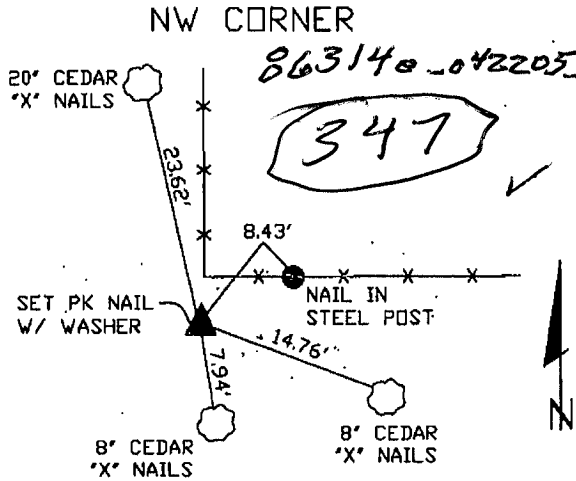
Monument Description and Remarks:

NW CORNER - SET PK. NAIL WITH WASHER - USED OLD TIES TO RESET THIS CORNER.

W1/4 CORNER - FOUND IRON PIPE 1.5' ABOVE GROUND

NOTE: THE NW CORNER AND THE W1/4 CORNER WERE PREVIOUSLY RECORDED IN THE OFFICE OF THE JONES COUNTY RECORDER, INST. # 1999-0320

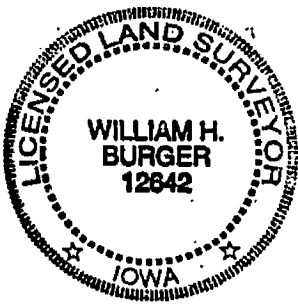
PLAN VIEW



SEC. 13 TWP. 86N RANGE 3W

CORNERS TO BE INDEXED

NW CORNER	13	86N	3W
W1/4 CORNER	13	86N	3W



I hereby certify that this land surveying document was prepared and related survey work was performed by me or, under my direct personal supervision and that I am a duly licensed Land Surveyor under the laws of the State of Iowa.

*William H. Burger* 4/22/05  
William H. Burger Date

License number 12642

My license renewal date is December 31, 2006

Pages or Sheets covered by this seal Sheet 1 of 1

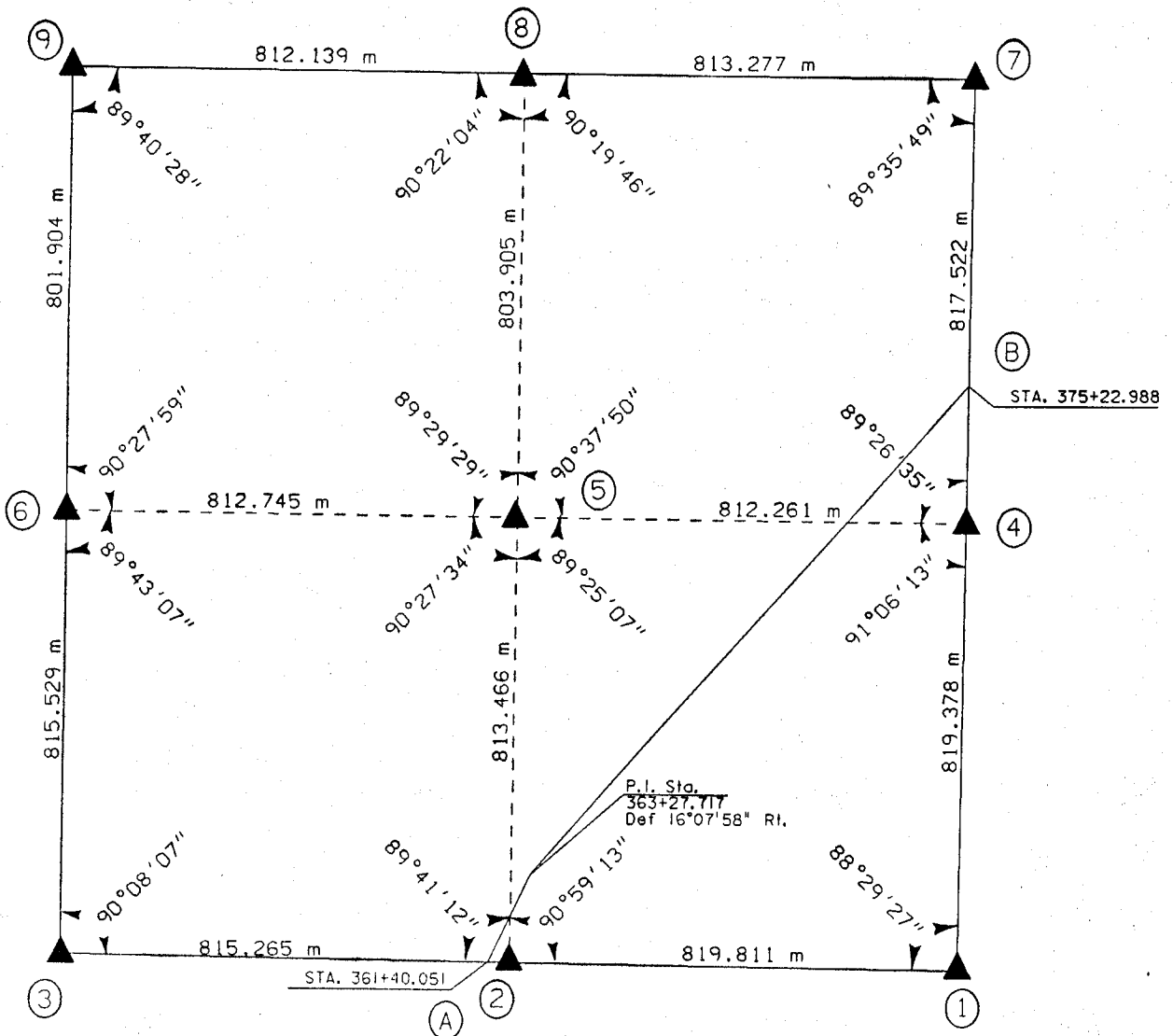
D

UNITED STATES PUBLIC SECTION CORNER CERTIFICATION  
AND LAND CORNER SURVEY  
SECTION 14 T-86N R-3W

MADE FOR  
IOWA DEPARTMENT OF TRANSPORTATION FOR THE PURPOSE OF  
RIGHT OF WAY DESCRIPTIONS ON PRIMARY ROAD No. U.S. 151

MADE BY  
MICHAEL R. FAGLE R.L.S. No. 8505  
JONES COUNTY, IOWA NHS-151-3(84)--19-57  
APRIL 1998 THRU OCTOBER 1998

ALL DISTANCES WERE CAREFULLY MEASURED AND MAY NOT AGREE WITH ROAD SURVEY STATIONING

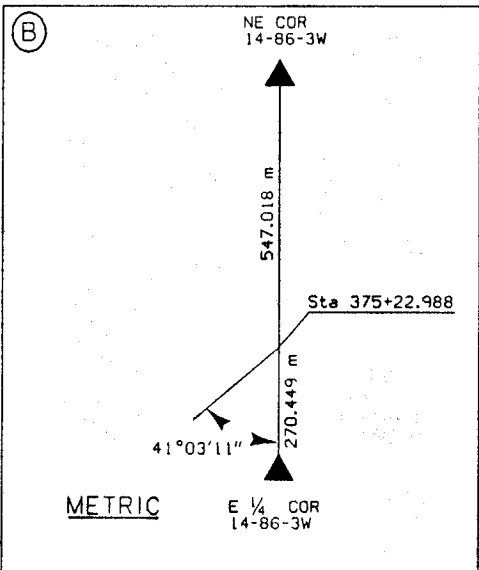
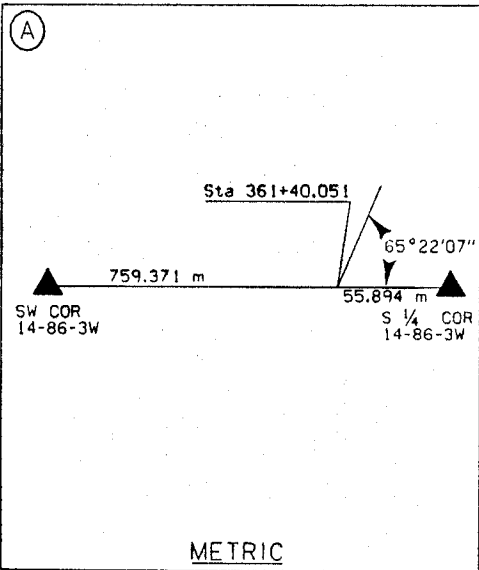
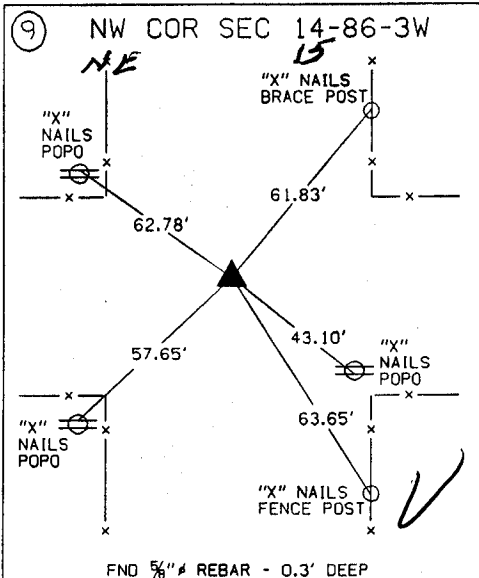
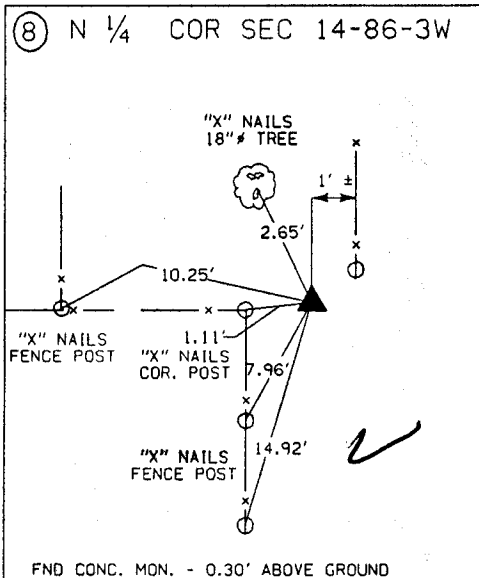
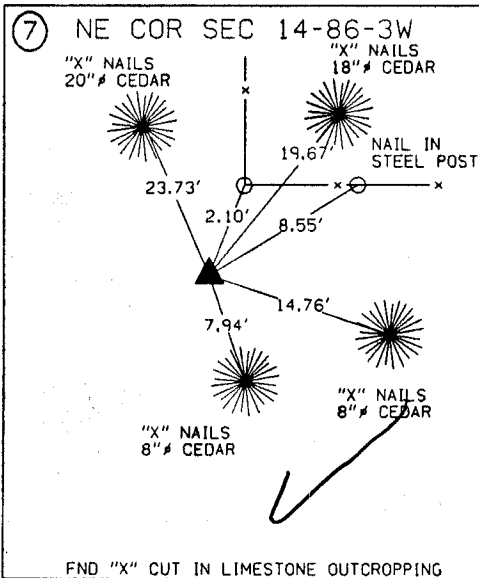
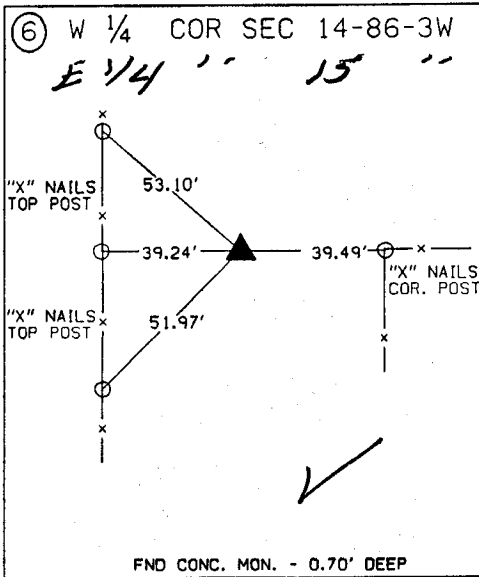
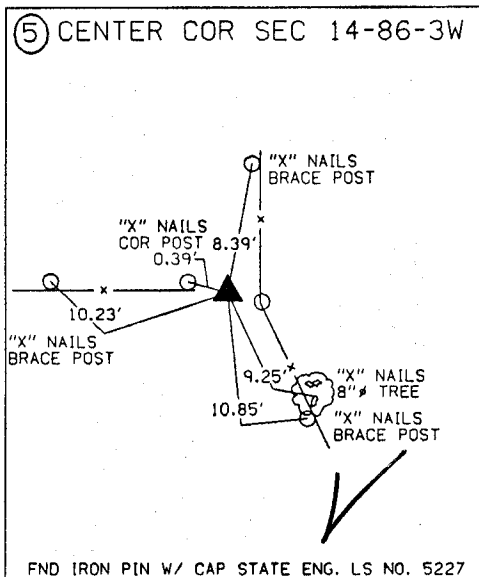
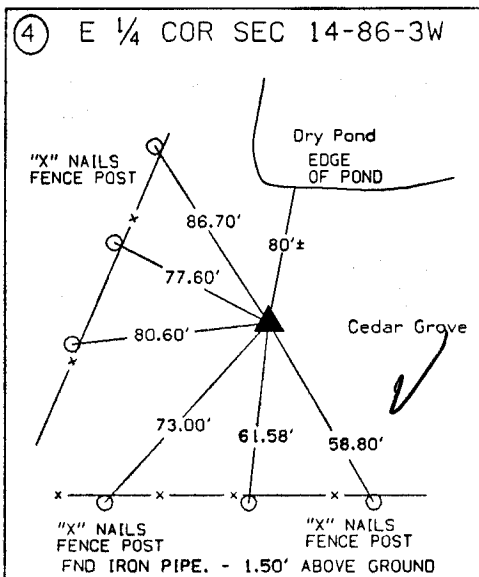
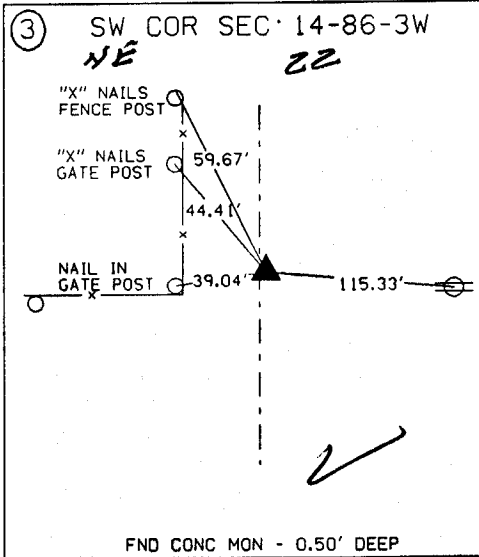
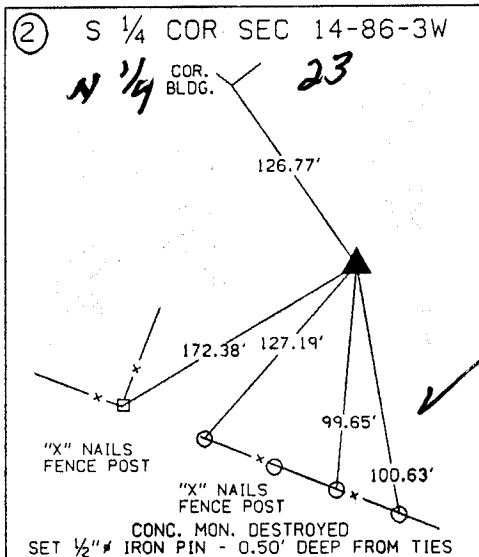
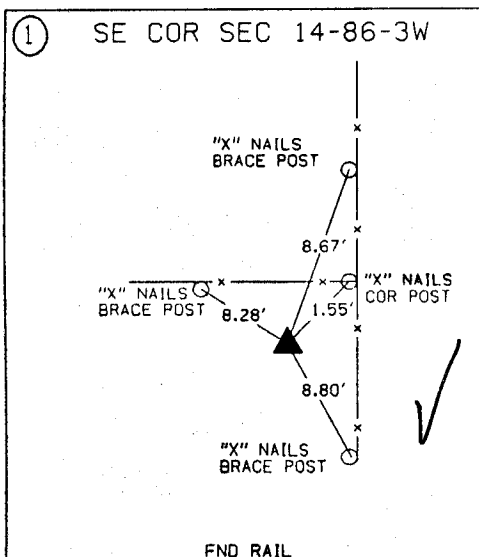


EARTH TECH

	<p>I hereby certify that this Land Surveying document was prepared by me or under my direct personal supervision and that I am a duly Licensed Land Surveyor under the laws of the State of Iowa.</p>
	<p><i>Michael R. Fagle</i> 1-21-99 MICHAEL R. FAGLE Date License number 8505 My license renewal date is December 31, 2000 Pages or sheets covered by this seal: <u>Two (2)</u></p>

METRIC

UNITED STATES PUBLIC SECTION CORNER CERTIFICATION  
AND LAND CORNER SURVEY  
SECTION 14 T-86N R-3W



**ALL TIES ARE ENGLISH UNLESS OTHERWISE NOTED**