

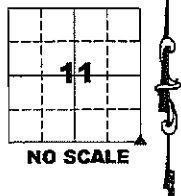
Marie Krutzfield, Recorder  
 Jones County, Iowa

PREPARED BY  
 CLARENCE J. WALTON, JONES COUNTY ENGINEER'S OFFICE, 19501 HWY. 64, ANAMOSA, IOWA, 52205 (319) 462-3785

**UNITED STATES PUBLIC LAND  
 SURVEY CORNER CERTIFICATE**  
**LAND SURVEY MONUMENTS SITUATED IN SECTION 11, TOWNSHIP 86 NORTH,  
 RANGE 3 WEST OF THE 5TH PRINCIPAL MERIDIAN, JONES COUNTY, IOWA.**

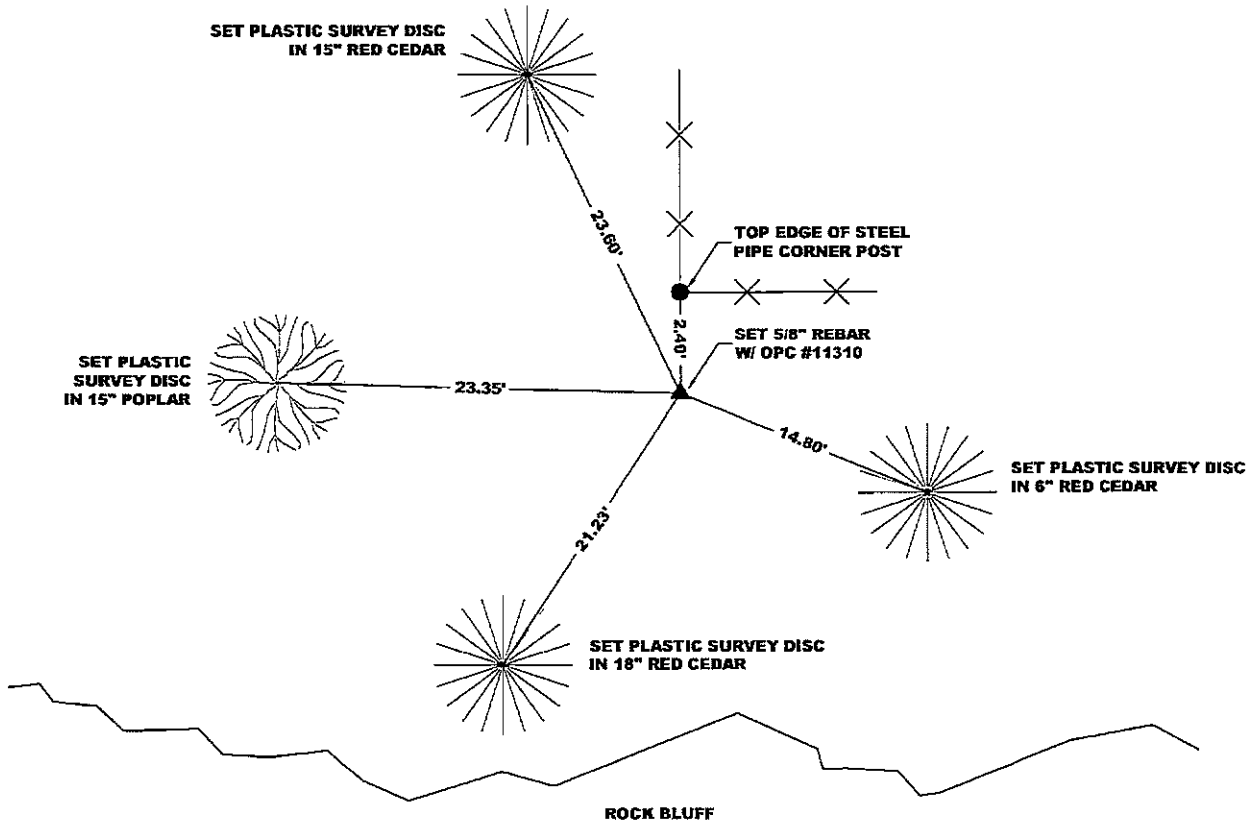
OFFICE FILE NO.

CORNER SECTION TOWNSHIP RANGE  
 CENTER 11 86N 3W



STATE PLANE COORDINATE  
 NAD 83 IOWA NORTH  
 N 3569196.55  
 E 5557195.09

NOTE:  
 THE STATE PLANE COORDINATE AS INDICATED IS FOR CONVENIENCE ONLY.  
 THE TIES AS SHOWN SHOULD BE USED TO REPLACE THE CORNER, IF  
 DESTROYED

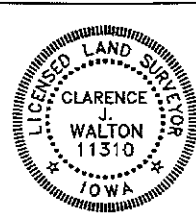


OPC ORANGE PLASTIC CAP  
 ( ) RECORDED AS

PREVIOUSLY RECORDED IN RECORDER'S DOCUMENT 1999 0319

MONUMENT DESCRIPTION AND HOW ESTABLISHED FOUND NO CUT "X" IN LIMESTONE OUTCROPPING, DRILLED ROCK AND SET 5/8" REBAR W/OPC  
 \*11310" AT BEST FIT OF EXISTING TIES.

FIELD BOOK 373, PAGE 78. DATE OF SURVEY: 3/26/08



I hereby certify that this land surveying document and the related survey work was performed by me or under my direct personal supervision and that I am a duly registered Land Surveyor under the laws of the State of Iowa.  
 Signed: *Clarence J. Walton* 3/31/08  
 Clarence J. Walton, L.S.  
 My Registration Renewal Date is December 31, 2009  
 Iowa License Number 11310  
 Pages or sheets covered by this seal: 1 of 1.

- A. THERE IS NO CERTIFICATE FOR THE CORNER ON FILE WITH THE RECORDER OF THE COUNTY IN WHICH THE CORNER IS LOCATED.
- B. THE CORNER MONUMENT HAS BEEN REPLACED OR MODIFIED.
- C. THE SURVEYOR IN RESPONSIBLE CHARGE OF THE LAND SURVEYING ACCEPTS A CORNER POSITION THAT DIFFERS FROM THAT SHOWN IN THE PUBLIC RECORDS OF THE COUNTY IN WHICH THE CORNER IS LOCATED.
- D. THE REFERENCE TIES REFERRED TO IN AN EXISTING PUBLIC RECORD NO LONGER EXIST.

**CORNERS TO BE INDEXED**

CORNER	SECTION	TOWNSHIP	RANGE
SE	11	86N	3W
SW	12	86N	3W
NW	13	86N	3W
NE	14	86N	3W

**JONES COUNTY ENGINEER'S OFFICE**



19501 HWY. 64, ANAMOSA, IOWA 52205  
 (319) 462-3785

2005 1430

FILED  
RECORDERS OFFICE  
JONES COUNTY IOWA

05 APR 25 PM 1:54

MARIE KRUTZFIELD  
RECORDER 7.00 Pd

any questions  
call the recorder  
at 510-2069

Prepared by Wm. Burger Land Surveyors 510 3rd Street West Court, Worthington, Iowa Phone 563 - 855 2028

UNITED STATES PUBLIC LAND SURVEY CORNER CERTIFICATE

Land Survey Monuments situated in Section 13, Township 86N, Range 3W, of the Fifth Principal Meridian, Jones County, Iowa. Previously recorded in SEE NOTE in the Office of the County Recorder

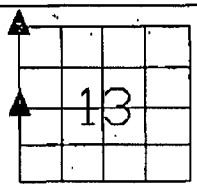
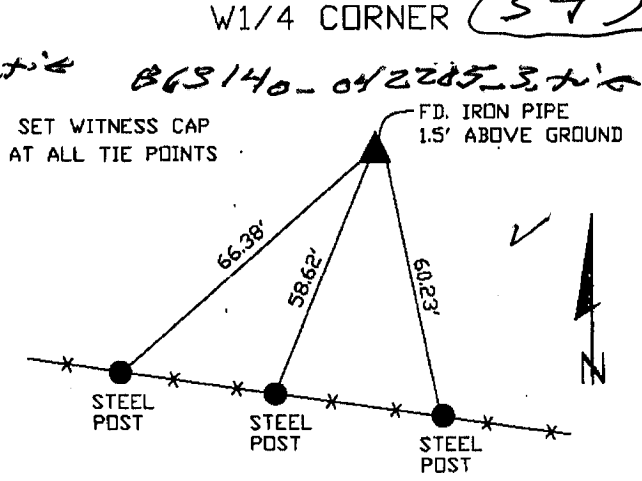
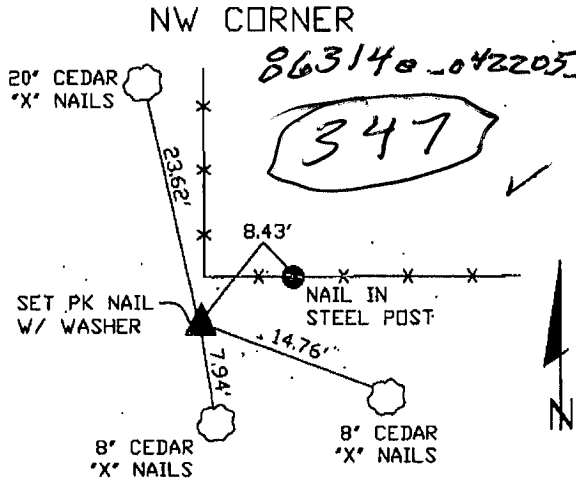
Monument Description and Remarks:

NW CORNER - SET PK. NAIL WITH WASHER - USED OLD TIES TO RESET THIS CORNER.

W1/4 CORNER - FOUND IRON PIPE 1.5' ABOVE GROUND

NOTE: THE NW CORNER AND THE W1/4 CORNER WERE PREVIOUSLY RECORDED IN THE OFFICE OF THE JONES COUNTY RECORDER, INST. # 1999-0320

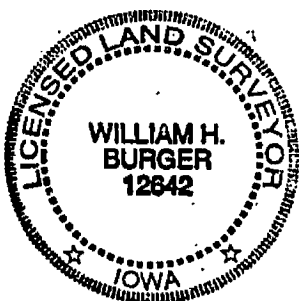
PLAN VIEW



SEC. 13 TWP. 86N RANGE 3W

CORNERS TO BE INDEXED

NW CORNER	13	86N	3W
W1/4 CORNER	13	86N	3W



I hereby certify that this land surveying document was prepared and related survey work was performed by me or, under my direct personal supervision and that I am a duly licensed Land Surveyor under the laws of the State of Iowa.

*William H. Burger* 4/22/05  
William H. Burger Date

License number 12642

My license renewal date is December 31, 2006

Pages or Sheets covered by this seal Sheet 1 of 1

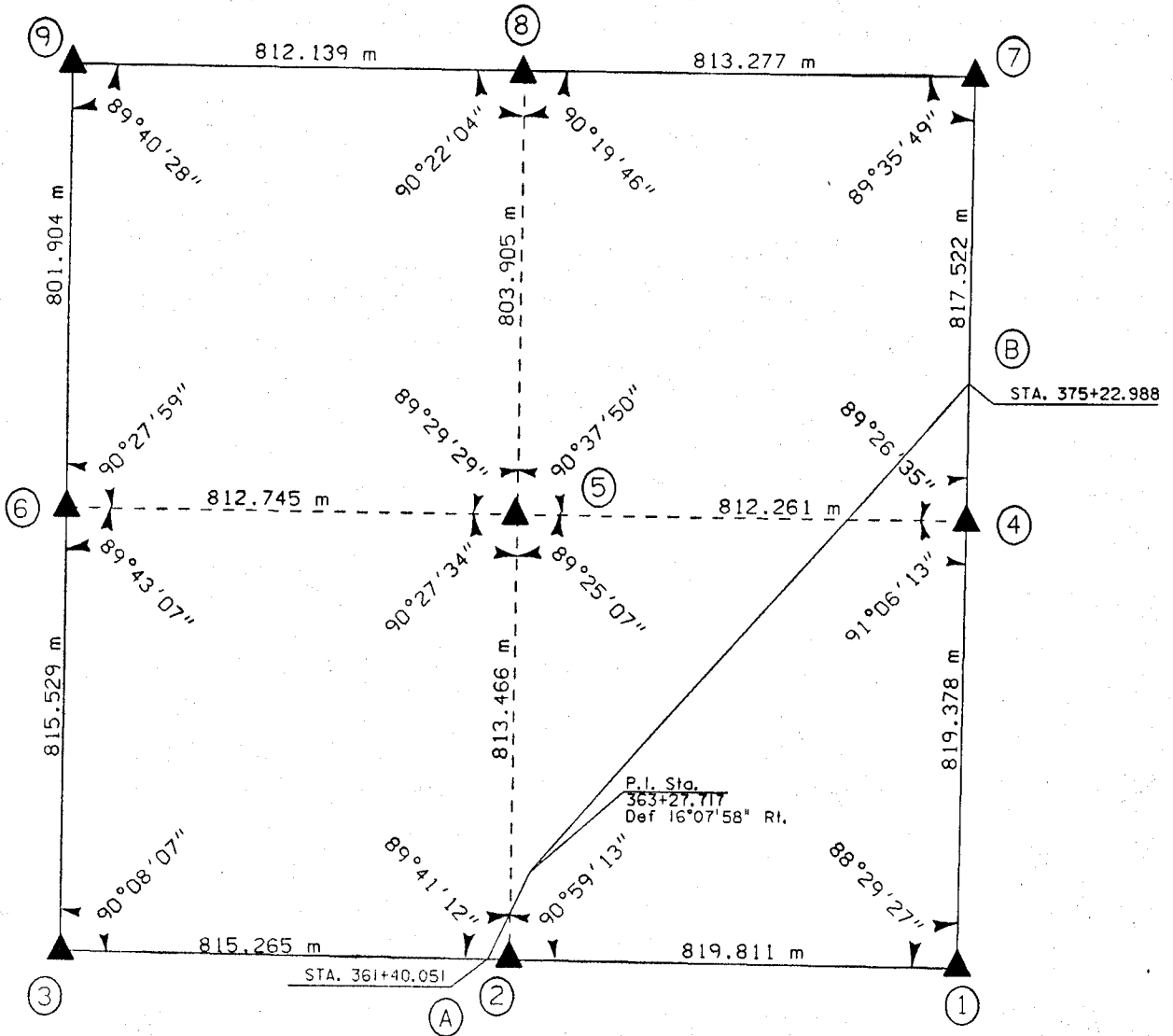
D

UNITED STATES PUBLIC SECTION CORNER CERTIFICATION  
AND LAND CORNER SURVEY  
SECTION 14 T-86N R-3W

MADE FOR  
IOWA DEPARTMENT OF TRANSPORTATION FOR THE PURPOSE OF  
RIGHT OF WAY DESCRIPTIONS ON PRIMARY ROAD No. U.S. 151

MADE BY  
MICHAEL R. FAGLE R.L.S. No. 8505  
JONES COUNTY, IOWA NHS-151-3(84)--19-57  
APRIL 1998 THRU OCTOBER 1998

ALL DISTANCES WERE CAREFULLY MEASURED AND MAY NOT AGREE WITH ROAD SURVEY STATIONING

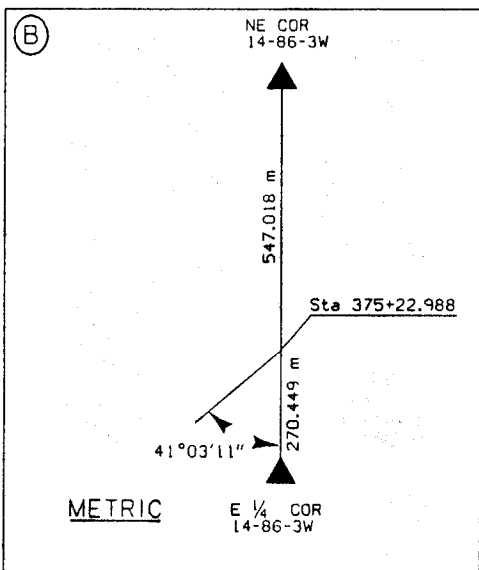
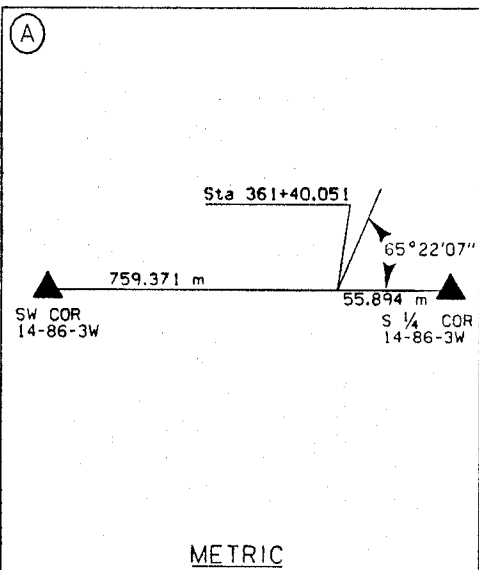
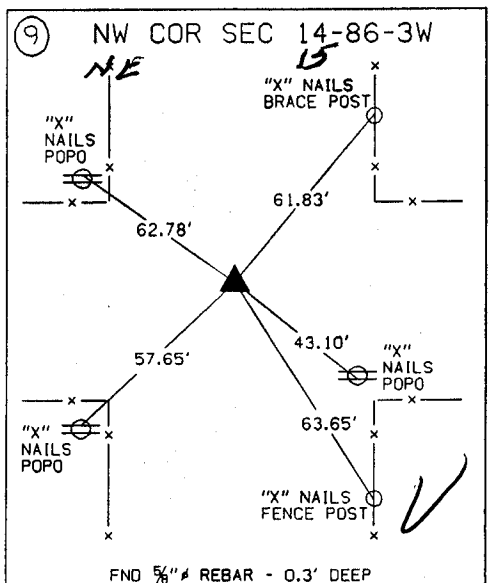
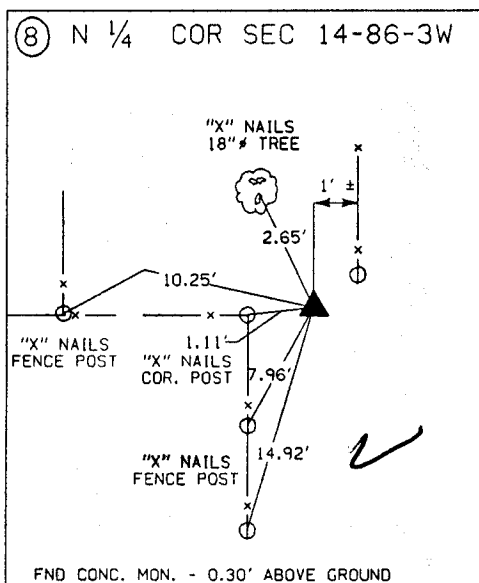
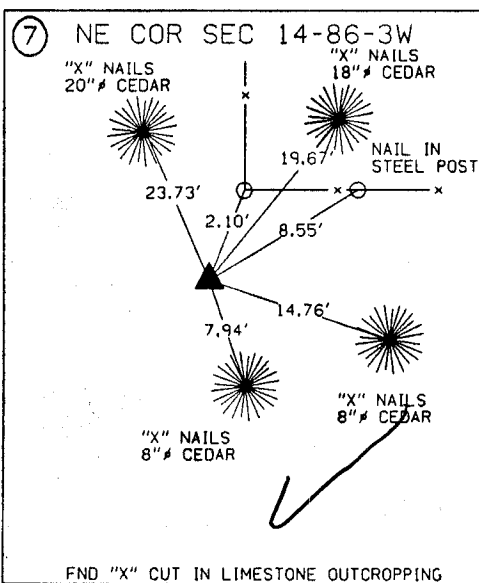
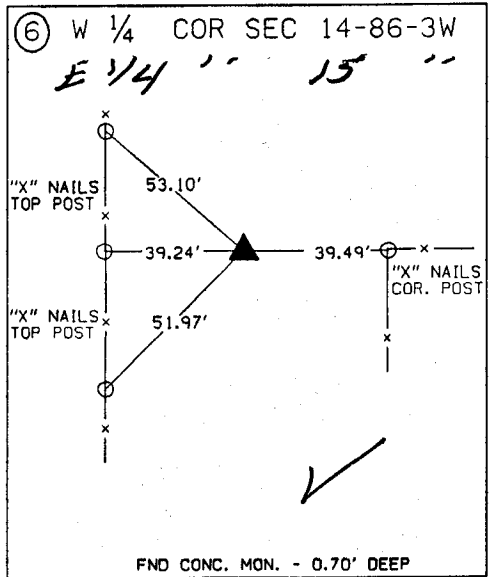
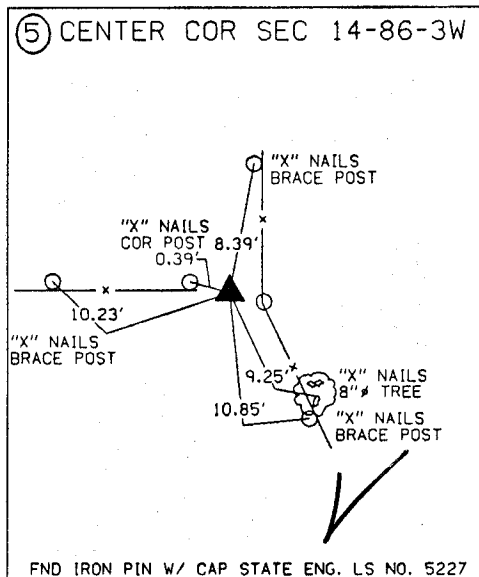
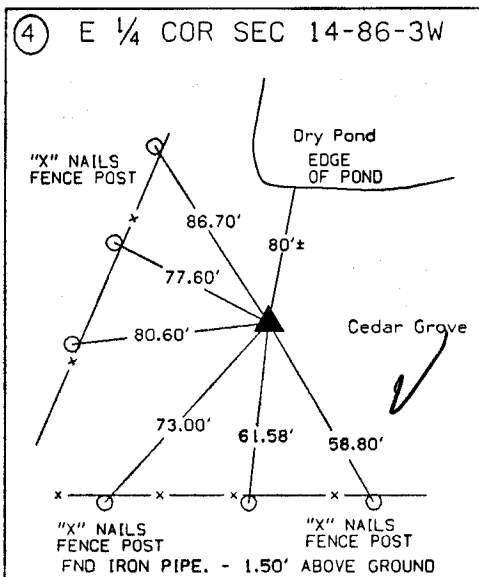
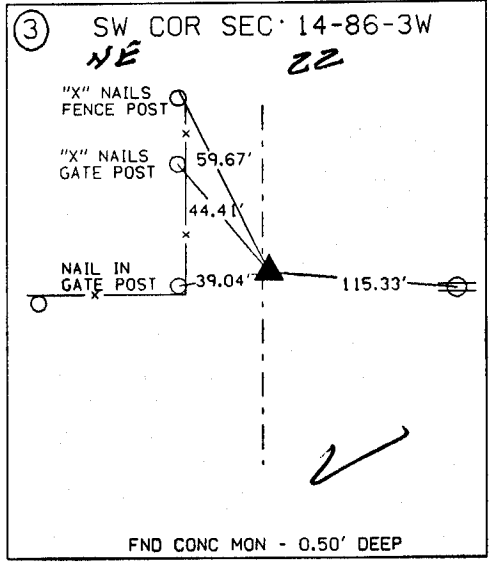
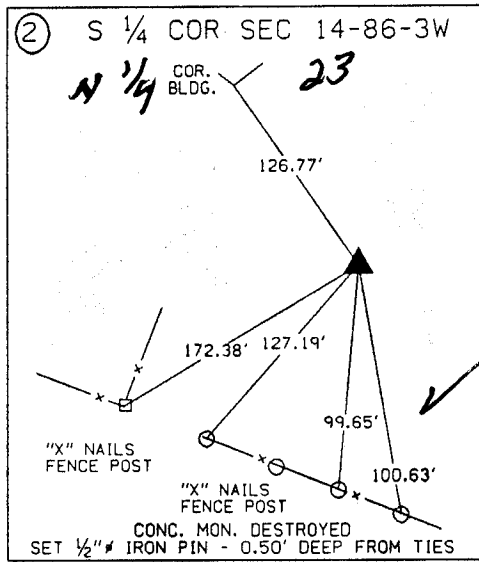
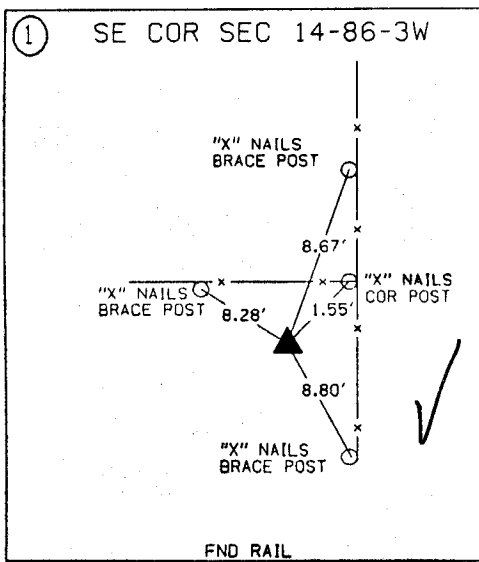


EARTH TECH

	<p>I hereby certify that this Land Surveying document was prepared by me or under my direct personal supervision and that I am a duly Licensed Land Surveyor under the laws of the State of Iowa.</p>
	<p><u>Michael R. Fagle</u> 1-21-99 MICHAEL R. FAGLE Date License number 8505 My license renewal date is December 31, 2000 Pages or sheets covered by this seal: <u>Two (2)</u></p>

METRIC

UNITED STATES PUBLIC SECTION CORNER CERTIFICATION  
AND LAND CORNER SURVEY  
SECTION 14 T-86N R-3W



**ALL TIES ARE ENGLISH UNLESS OTHERWISE NOTED**