

2005 1627

FILED
RECORDERS OFFICE
JONES COUNTY IOWA

05 MAY 12 AM 10:38

MARIE KRUTZFIELD
RECORDER

J.D. TJEKES, LS. JONES COUNTY ENGINEER'S OFFICE, 19501 HWY. 64, ANAMOSA, IOWA, 52205 (319)462-3785

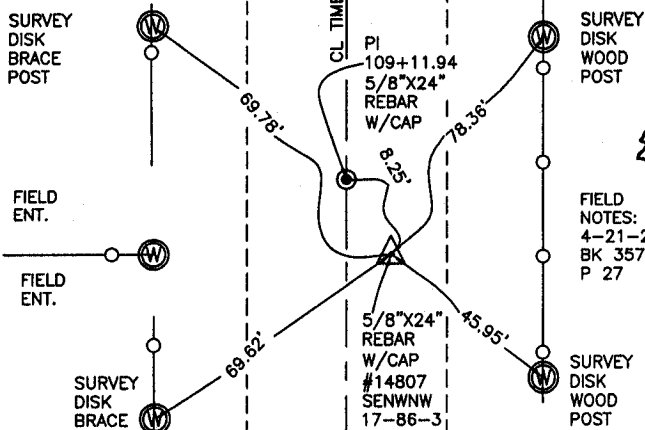
UNITED STATES PUBLIC LAND SURVEY CORNER CERTIFICATE

LAND SURVEY MONUMENTS SITUATED IN SECTION 17, TOWNSHIP 86
NORTH, RANGE 3 WEST OF THE 5TH P.M., JONES COUNTY, IOWA

CORNERS TO BE INDEXED

CORNER SECTION TOWNSHIP RANGE
SE-NW-NW 17 86N 3W

OFFICE FILE NO.
86317g_050305.tif

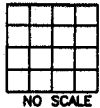


PREVIOUSLY RECORDED IN BOOK NA, PAGE NA
MONUMENT DESCRIPTION AND HOW ESTABLISHED
PER BREAKDOWN OF SECTION 17, SET 5/8"X24" REBAR W/CAP
#14807 IN ASPHALT PAVEMENT. TIES AS INDICATED FOR
SE-NW-NW SECTION 17 T86N R3W.
1573

CORNERS TO BE INDEXED

CORNER SECTION TOWNSHIP RANGE

OFFICE FILE NO.



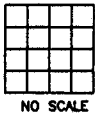
86317g-051105.tif

PREVIOUSLY RECORDED IN BOOK _____, PAGE _____
MONUMENT DESCRIPTION AND HOW ESTABLISHED _____

CORNERS TO BE INDEXED

CORNER SECTION TOWNSHIP RANGE

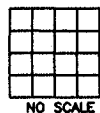
OFFICE FILE NO.



CORNERS TO BE INDEXED

CORNER SECTION TOWNSHIP RANGE

OFFICE FILE NO.



PREVIOUSLY RECORDED IN BOOK _____, PAGE _____
MONUMENT DESCRIPTION AND HOW ESTABLISHED _____

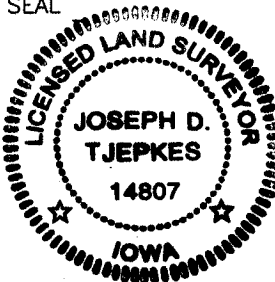
PREVIOUSLY RECORDED IN BOOK _____, PAGE _____
MONUMENT DESCRIPTION AND HOW ESTABLISHED _____

I hereby declare that this plat, survey or report was made by me or under my direct personal supervision and that I am a duly registered Land Surveyor under the laws of the State of Iowa.

Signed: *[Signature]* 5.11.05

Joseph D. Tjepkes L.S. Iowa Reg. No. 14807
My Registration Renewal Date is December 31, 2006

SEAL



J.D. TJEKES LS 14807
JONES COUNTY
ENGINEER'S OFFICE

19501 HWY. 64,
ANAMOSA, IOWA,
52205 (319)462-3785