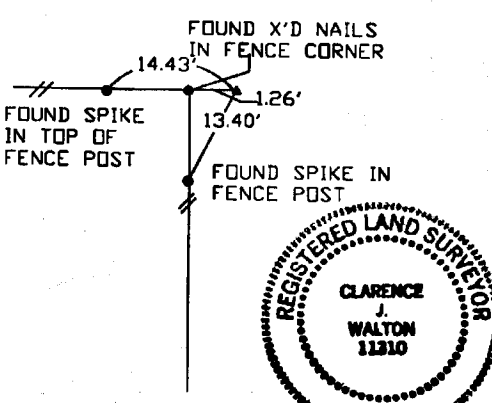
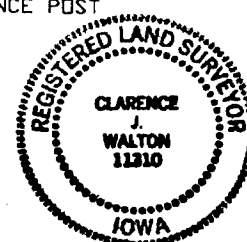
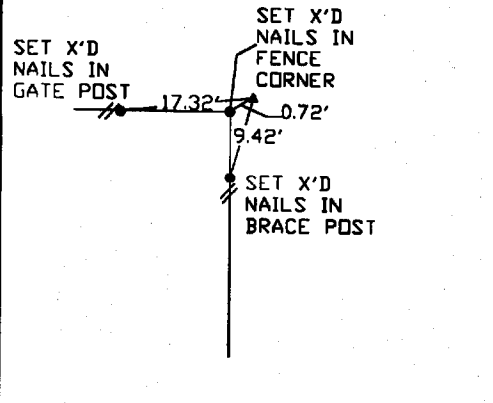


UNITED STATES PUBLIC LAND SURVEY CORNER CERTIFICATE

LAND SURVEY MONUMENTS SITUATED IN SECTION 18, TOWNSHIP 86 NORTH
RANGE 3 WEST OF THE 5TH P.M., JONES COUNTY, IOWA.

<p>NO SCALE</p> <p style="text-align: center;">NE CORNER</p> <p style="text-align: center; font-size: 1.2em;">1999 1212</p> <p style="text-align: center;">FILED RECORDERS OFFICE JONES COUNTY IOWA</p> <p style="text-align: center;">99 APR -5 AM 10:53</p> <p style="text-align: center;">MARIE KRUTZFIELD RECORDER <i>6.00 Pd</i></p>  <p style="text-align: center;">  </p> <p>PREVIOUSLY RECORDED IN BOOK _____ PAGE _____</p> <p>MONUMENT DESCRIPTION AND HOW ESTABLISHED _____</p> <p>FOUND 5/8" REBAR FROM PREVIOUS SURVEY.</p>	<p>NO SCALE</p> <p style="text-align: center;">NW CORNER</p>  <p>PREVIOUSLY RECORDED IN BOOK _____ PAGE _____</p> <p>MONUMENT DESCRIPTION AND HOW ESTABLISHED _____</p> <p>SET 1/2" REBAR WITH YELLOW CAP #11310 OVER</p> <p>REMAINS OF WOOD STAKE, NEAR FENCE INTERSECTION.</p>
---	---

<p>I hereby declare that this plat, survey or report was made by me or under my direct personal supervision and that I am a duly registered Land Surveyor under the laws of the State of Iowa.</p> <p>Signed <u><i>Clarence J. Walton</i></u> Date <u>4/2/99</u></p> <p>Clarence J. Walton L.S. Iowa Reg No. 11310 My Registration Renewal Date Is December 31, 1999</p>	<p style="text-align: center;">CORNERS TO BE INDEXED</p> <table style="width: 100%; border-collapse: collapse;"> <tr> <td style="text-align: left;">CORNER</td> <td style="text-align: center;">SECTION</td> <td style="text-align: center;">TOWNSHIP</td> <td style="text-align: center;">RANGE</td> </tr> <tr> <td>NE CORNER</td> <td style="text-align: center;">18</td> <td style="text-align: center;">T86N</td> <td style="text-align: center;">R3W</td> </tr> <tr> <td>NW CORNER</td> <td style="text-align: center;">18</td> <td style="text-align: center;">T86N</td> <td style="text-align: center;">R3W</td> </tr> </table> <p style="text-align: center;">BRAIN ENGINEERING, INC. 777 10TH STREET MARION, IOWA 52302 23289-10 (319) 373-1318</p>	CORNER	SECTION	TOWNSHIP	RANGE	NE CORNER	18	T86N	R3W	NW CORNER	18	T86N	R3W
CORNER	SECTION	TOWNSHIP	RANGE										
NE CORNER	18	T86N	R3W										
NW CORNER	18	T86N	R3W										

86318e-040299
863



97 98 1744

FILED
RECORDERS OFFICE
JONES COUNTY IOWA

97 DEC -9 AM 9:50

LINDA J. BENDIXEN
RECORDER *LJB*

PREPARED BY WM. BURGER LANDSURVEYORS 510 3RD STREET WEST COURT, NORTHINGTON, IOWA 52078 PHONE (319) 898 2028

UNITED STATES PUBLIC LAND SURVEY CORNER CERTIFICATE

LAND SURVEY MONUMENT SITUATED IN SECTION 18, TOWNSHIP 86N, RANGE 3W, OF THE FIFTH PRINCIPAL MERIDIAN, JONES COUNTY, IOWA. PREVIOUSLY RECORDED IN NA IN COUNTY RECORDER'S OFFICE

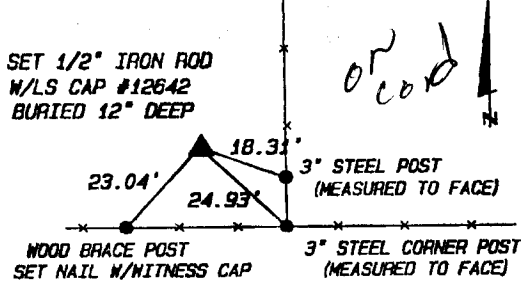
MONUMENT DESCRIPTION AND REMARKS: (NO CORNER CERTIFICATES FOUND AT THE COUNTY RECORDERS OFFICE)
NE CORNER --- FOUND 1" PIPE USED BY PREVIOUS SURVEYOR AS NE CORNER OF SECTION

EAST 1/4 CORNER --- RESET CORNER FROM INFORMATION ON A PREVIOUS RECORDED PLAT BOOK 396, PAGE 69

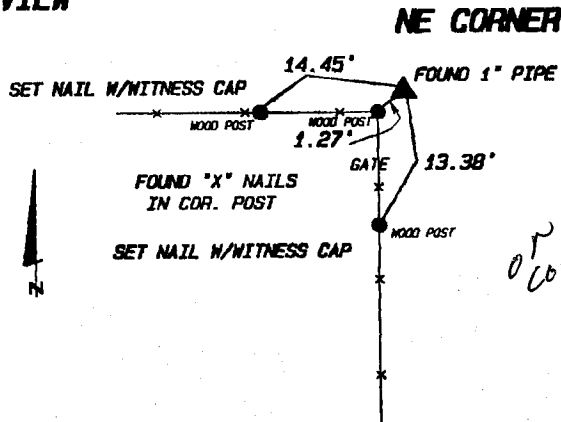
NW CORNER NE1/4 NE1/4 --- NO MONUMENTS AVAILABLE TO THE WEST, USED EXISTING ROADWAY EVIDENCE AND FENCELINE EVIDENCE TO ESTABLISH N1/4 CORNER AND SET NW COR. OF THE NE1/4 NE1/4 ON LINE AND MIDWAY BETWEEN THE NE CORNER AND SAID N1/4 CORNER

NOTE: SET 1/2" IRON ROD W/LS CAP #12642 AT THE E1/4 CORNER AND THE NW COR. OF THE NE1/4 NE1/4

NW NE1/4 NE1/4

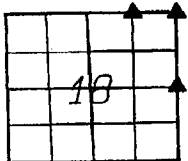
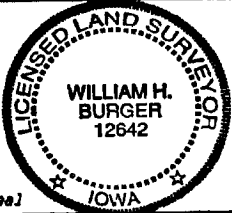
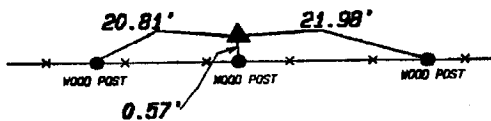


PLAN VIEW



EAST 1/4 CORNER

SET 1/2" IRON ROD W/LS CAP #12642



Sec. 18 TWP. 86N Range 3W

NOTE: SET NAIL W/WITNESS CAP AT ALL TIE POINTS

I hereby certify that this land surveying document was prepared and related survey work was performed by me or under my direct personal supervision and that I am a duly licensed Land Surveyor under the laws of the State of Iowa.

William H. Burger 12/5/97
Date

William H. Burger
License number 12642
My license renewal date is December 31, 1998
Pages or Sheet covered by this seal: Sheet 1 of 1

CORNERS TO BE INDEXED

CORNER	SECTION	TWP.	RANGE
NE COR.	18	86N	3W
EAST 1/4	18	86N	3W
NW-NE1/4 NE1/4	18	86N	3W
	SECTION	TWP.	RANGE

86318d-120597
86318e-120597
86318o-120597