

2005 1600

FILED
RECORDERS OFFICE
JONES COUNTY IOWA

05 MAY 10 AM 9:18

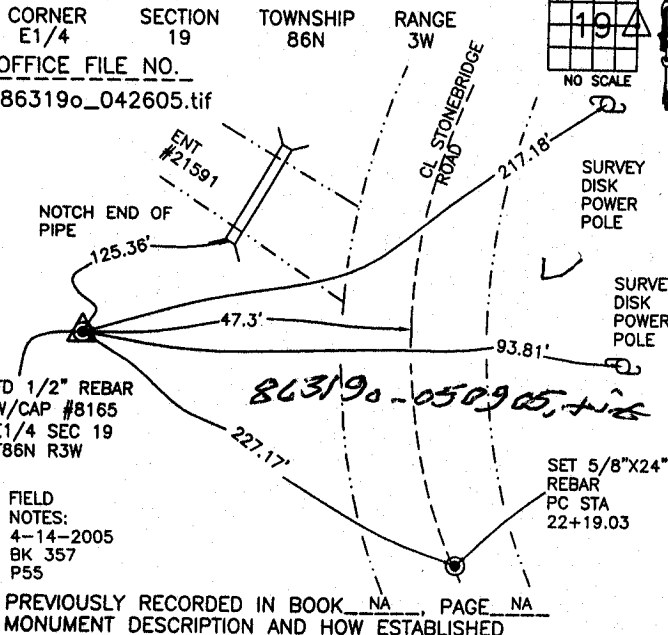
MARIE KRUTZFIELD
RECORDER *NO Fee*

J.D. TJEPKES, LS. JONES COUNTY ENGINEER'S OFFICE, 19501 HWY. 64, ANAMOSA, IOWA, 52205 (319)462-3785

UNITED STATES PUBLIC LAND SURVEY CORNER CERTIFICATE

LAND SURVEY MONUMENTS SITUATED IN SECTION 19, TOWNSHIP 86
NORTH, RANGE 3 WEST OF THE 5TH P.M., JONES COUNTY, IOWA

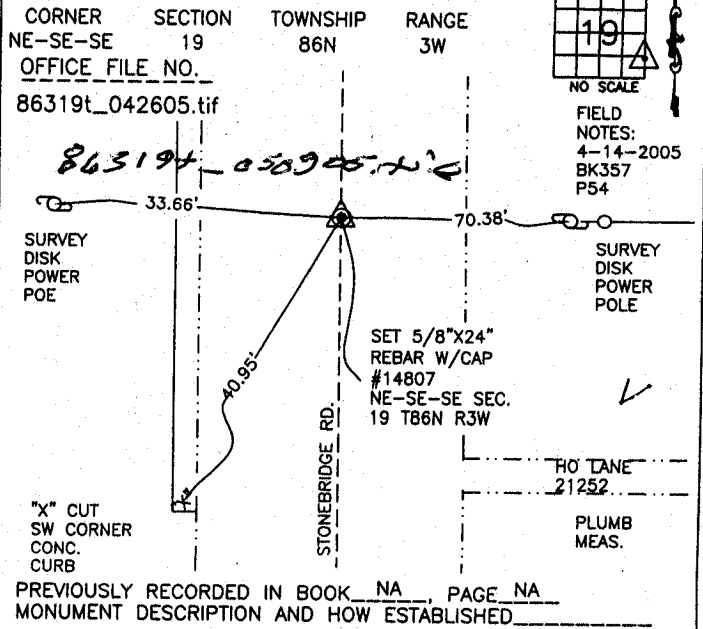
CORNERS TO BE INDEXED



RETIED AFTER GRADING AND PAVING. FD.1/2" IRON PIN W/RED CAP #8165. TIES AS INDICATED FOR E1/4 SEC 19 T86N R3W.

(362)

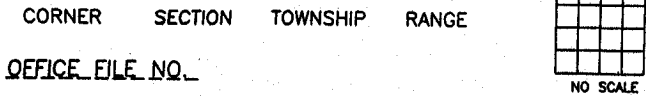
CORNERS TO BE INDEXED



TIES AFTER GRADING AND PAVING FOR NE-SE-SE SECTION 19 T86N R3W. TIES AS INDICATED

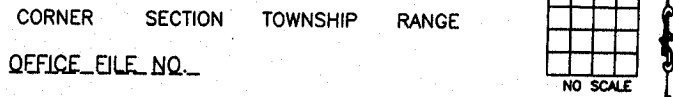
(358)

CORNERS TO BE INDEXED



PREVIOUSLY RECORDED IN BOOK _____, PAGE _____
MONUMENT DESCRIPTION AND HOW ESTABLISHED _____

CORNERS TO BE INDEXED

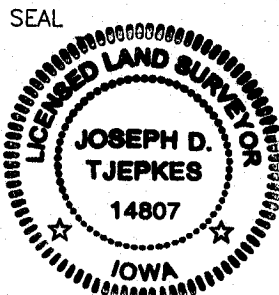


PREVIOUSLY RECORDED IN BOOK _____, PAGE _____
MONUMENT DESCRIPTION AND HOW ESTABLISHED _____

I hereby declare that this plat, survey or report was made by me or under my direct personal supervision and that I am a duly registered Land Surveyor under the laws of the State of Iowa.

Signed: *Joseph D. Tjepkes* 5-29-05

Joseph D. Tjepkes L.S. Iowa Reg. No. 14807
My Registration Renewal Date is December 31, 2006



J.D. TJEPKES LS 14807
JONES COUNTY
ENGINEER'S OFFICE

19501 HWY. 64,
ANAMOSA, IOWA,
52205 (319)462-3785

G

SECTION CORNER CERTIFICATE

OF
 LAND SURVEY MONUMENTS SITUATED IN SECTION 20, TOWNSHIP 86 NORTH,
 RANGE 3 WEST, OF THE FIFTH PRINCIPAL MERIDIAN, JONES, COUNTY, IOWA.

PREVIOUSLY RECORDED IN BOOK _____ AT PAGE _____.

FOR RECORDER'S USE

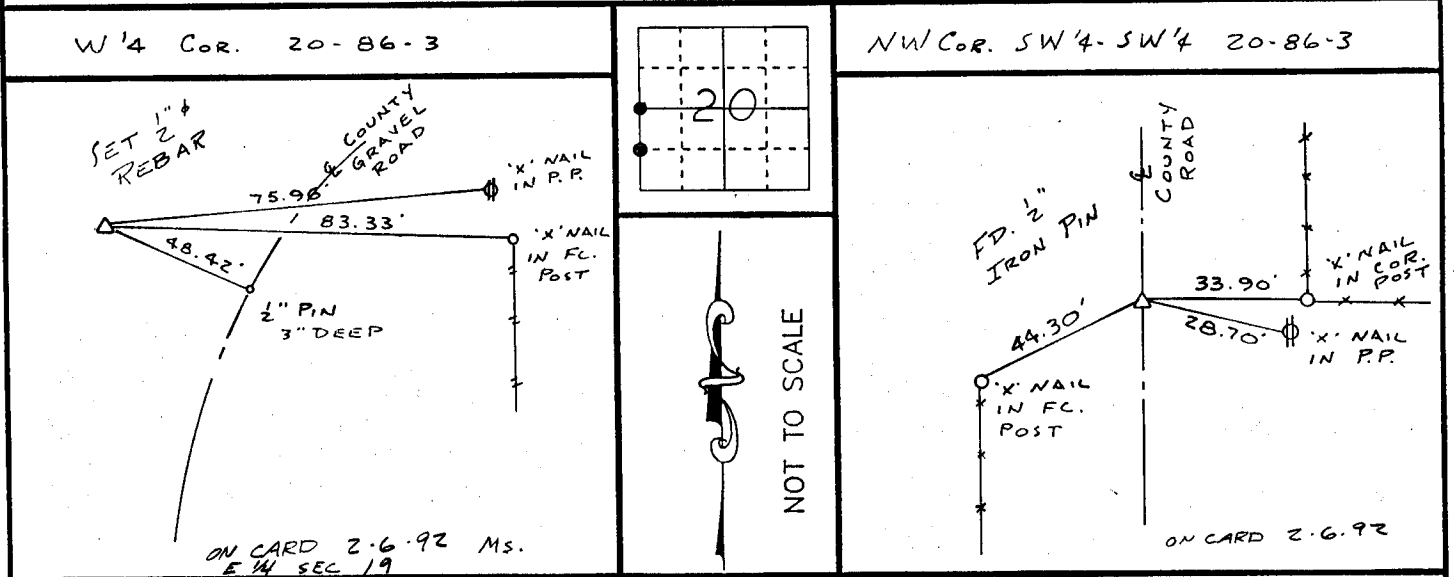
REASON FOR PREPARING CERTIFICATE:

- A) THERE IS NO CERTIFICATE FOR THE CORNER ON FILE WITH THE RECORDER OF THE COUNTY IN WHICH THE CORNER IS LOCATED.
- B) CORNER POSITION DIFFERS FROM THAT SHOWN IN THE PUBLIC RECORDS OF THE COUNTY IN WHICH THE CORNER IS LOCATED.
- C) THE CORNER MONUMENT HAS BEEN REPLACED OR MODIFIED.
- D) THE REFERENCE TIES REFERRED TO IN AN EXISTING PUBLIC RECORD ARE INCORRECT.

MONUMENT DESCRIPTION AND REMARKS :

W 1/4 CORNER SECTION 20-86-3 SET 1/2" PIN WITH CAP # 8165
 FLUSH WITH GROUND
 NW COR-SW 1/4-SW 1/4 SECTION 20-86-3 FD. 1/2" IRON PIN ON E COUNTY
 ROAD 3" DEEP

RECOVERY TIE DRAWING



I, GLEN D. MEISNER, - CERTIFY THAT THE CORNER LOCATION(S) SHOWN ON THIS RECORD WERE DETERMINED BY ME OR UNDER MY DIRECTION AND CONTROL AND THAT THIS U.S. PUBLIC LAND SURVEY MONUMENT RECORD IS CORRECT AND COMPLETE TO THE BEST OF MY KNOWLEDGE AND BELIEF.

Glen D. Meisner 1-30-92
 GLEN D. MEISNER L.S. NO 8165 DATE



<p>LEGEND</p> <ul style="list-style-type: none"> △ GOVERNMENT CORNER ○ 5/8" THE PIN SET — CENTERLINE - - - EXISTING FENCE LINE - - - R.O.W. LINE 	<p>SHEET TITLE: U.S. PUBLIC LAND SURVEY RECORD</p> <p>PROJECT TITLE: COTTONWOODS FIRST ADDITION</p>	<p>HALL AND HALL ENGINEERS, INC. 226 29TH STREET DRIVE S.E. CEDAR RAPIDS, IOWA 52403 319-362-9548</p>
<p>D W N R.W.B. C H K G.D.M. A P P</p>	<p>D A T E 6-20-91 S C A L E NONE</p>	<p>P N O B O T Z Z P N O P R O J 4428</p>

863190-013092, 863191-013092