

2001 3971

FILED  
RECORDERS OFFICE  
JONES COUNTY IOWA

86319e-102401

Id# 363

01 NOV 16 AM 11:58

MARIE KRUTZFIELD  
RECORDER No Fee

J.D. Tjepkes, L.S. JONES COUNTY ENGINEER'S OFFICE, 19501 HWY. 64, ANAMOSA, IOWA, 52205 (319)462-3785

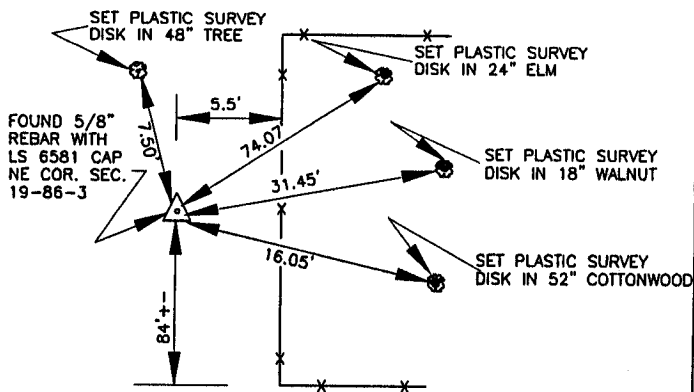
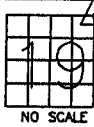
# UNITED STATES PUBLIC LAND SURVEY CORNER CERTIFICATE

LAND SURVEY MONUMENTS SITUATED IN SECTION 19, TOWNSHIP 86  
NORTH, RANGE 3 WEST OF THE 5TH P.M., JONES COUNTY, IOWA

### CORNERS TO BE INDEXED

CORNER SECTION TOWNSHIP RANGE  
NORTHEAST 19 86N 3W

OFFICE FILE NO.  
86319e\_092801

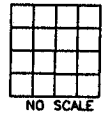


NOTE: HAROLD DILLON FILED TIES WITH COUNTY ENGINEER,  
PREVIOUSLY RECORDED IN BOOK N/A, PAGE N/A.  
MONUMENT DESCRIPTION AND HOW ESTABLISHED FOUND 5/8"  
REBAR WITH LS 6581 CAP. SET REFERENCE POINTS AND TIED OUT AS  
INDICATED. NORTHEAST CORNER SECTION 19, TOWNSHIP 86 NORTH, RANGE  
3 WEST, 5TH P.M., JONES COUNTY, IOWA

### CORNERS TO BE INDEXED

CORNER SECTION TOWNSHIP RANGE

OFFICE FILE NO.

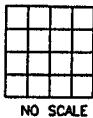


PREVIOUSLY RECORDED IN BOOK \_\_\_\_\_, PAGE \_\_\_\_\_  
MONUMENT DESCRIPTION AND HOW ESTABLISHED \_\_\_\_\_  
\_\_\_\_\_  
\_\_\_\_\_

### CORNERS TO BE INDEXED

CORNER SECTION TOWNSHIP RANGE

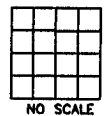
OFFICE FILE NO.



### CORNERS TO BE INDEXED

CORNER SECTION TOWNSHIP RANGE

OFFICE FILE NO.



PREVIOUSLY RECORDED IN BOOK \_\_\_\_\_, PAGE \_\_\_\_\_  
MONUMENT DESCRIPTION AND HOW ESTABLISHED \_\_\_\_\_  
\_\_\_\_\_  
\_\_\_\_\_

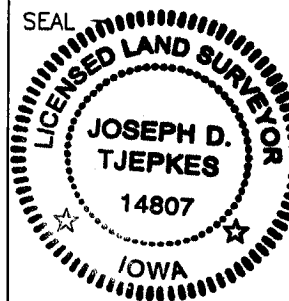
PREVIOUSLY RECORDED IN BOOK \_\_\_\_\_, PAGE \_\_\_\_\_  
MONUMENT DESCRIPTION AND HOW ESTABLISHED \_\_\_\_\_  
\_\_\_\_\_  
\_\_\_\_\_

I hereby declare that this plat, survey or report was made by me or under my direct personal supervision and that I am a duly registered Land Surveyor under the laws of the State of Iowa.

Signed:

*Joseph D. Tjepkes 10-24-01*

Joseph D. Tjepkes L.S. Iowa Reg. No. 14807  
My Registration Renewal Date is December 31, 2002



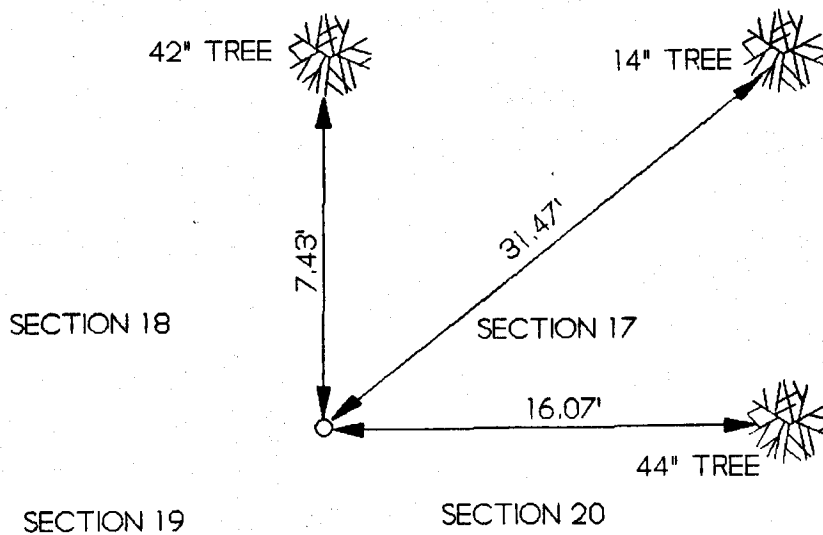
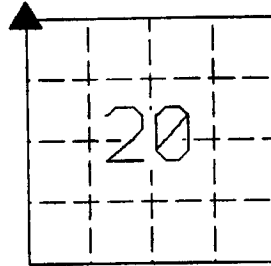
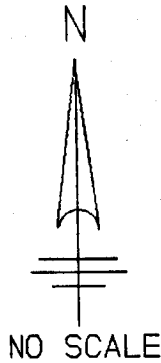
J.D. Tjepkes LS 14807  
JONES COUNTY  
ENGINEER'S OFFICE

19501 HWY. 64,  
ANAMOSA, IOWA,  
52205 (319)462-3785

# UNITED STATES PUBLIC LAND SURVEY CORNER CERTIFICATE

LAND SURVEY MONUMENT LOCATED IN SECTION 20, TOWNSHIP 86  
NORTH, RANGE 3 WEST, OF THE 5TH P.M. JONES COUNTY, IOWA  
PREVIOUSLY RECORDED IN BOOK NA ON PAGE NA.

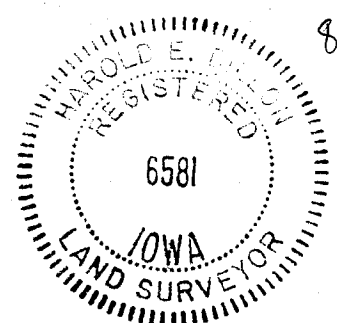
CARD  
9-18-90  
NE COR. 19  
M.S.



MONUMENT DESCRIPTION AND NARRATIVE NW Cor SEC 20  
RETABLISHED BY PROPORTIONATE MEASURE SET 3/8\"/>

I HEREBY CERTIFY THAT THE HEREON DEPICTED SURVEY TIE WORK WAS  
COMPLETED BY ME OR UNDER MY DIRECT PERSONAL SUPERVISION AND  
THAT I AM A DULY REGISTERED LAND SURVEYOR UNDER THE LAWS OF THE  
STATE OF IOWA.

Harold E Dillon \_\_\_\_\_ 9/10/90 \_\_\_\_\_  
HAROLD E. DILLON REG# 6581 DATE



86319e-091090