

2002 0739

FILED
RECORDERS OFFICE
JONES COUNTY IOWA

02 FEB 27 AM 8:50

MARIE KRUTZFIELD
RECORDER NO FEE

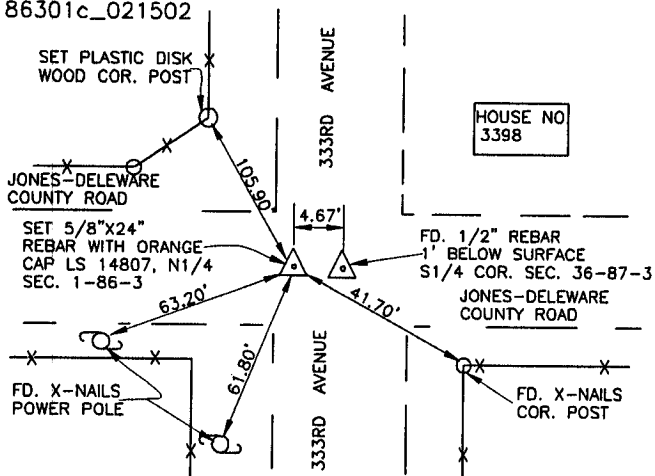
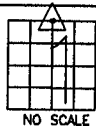
J.D. TJEPKES, LS. JONES COUNTY ENGINEER'S OFFICE, 19501 HWY. 64, ANAMOSA, IOWA, 52205 (319)462-3785

UNITED STATES PUBLIC LAND SURVEY CORNER CERTIFICATE

LAND SURVEY MONUMENTS SITUATED IN SECTION 1, TOWNSHIP 86
NORTH, RANGE 3 WEST OF THE 5TH P.M., JONES COUNTY, IOWA

CORNERS TO BE INDEXED

CORNER SECTION TOWNSHIP RANGE
N-1/4 1 86N 3W
OFFICE FILE NO.
86301c_021502

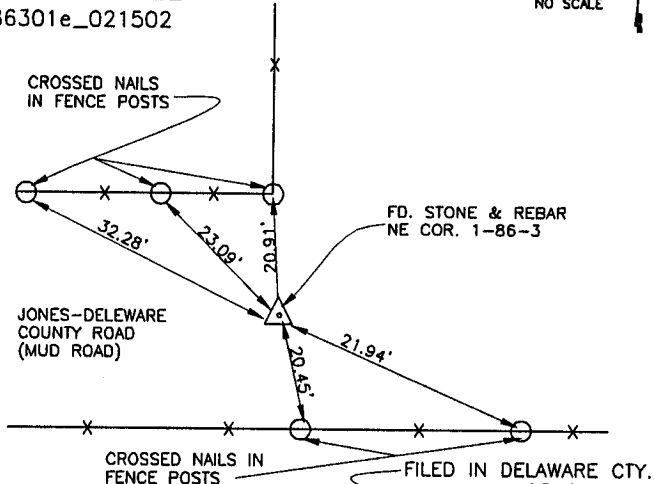
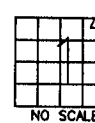


PREVIOUSLY RECORDED IN BOOK 352, PAGE 200
MONUMENT DESCRIPTION AND HOW ESTABLISHED SET 5/8"x24"
REBAR WITH ORANGE CAP LS 14807 ON TOWNSHIP LINE USING SINGLE
PROPORTION METHOD. SET REFERENCE POINTS AND TIED OUT AS INDICATED.
NORTH QUARTER CORNER SECTION 1, TOWNSHIP 86 NORTH, RANGE 3 WEST,
5TH PM, JONES COUNTY, IOWA.

DAVID GIBBS, LS 8419 FILED A CORNER CERTIFICATE ON THE
NORTH QUARTER CORNER SECTION ONE, T86N, R3W, 5TH PM,
IN DECEMBER OF 1993. THE MONUMENT CALLED FOR IS
THE SAME MONMENT SHOWN ON THE CORNER CERTIFICATE
FILED FOR THE SOUTH QUARTER CORNER OF SECTION THIRTYSIX,
TOWNSHIP 87 NORTH, RANGE 3 WEST, 5TH PM, DELAWARE CTY.,
ALSO FILED IN DECEMBER OF 1993. MR. GIBBS INFORMED ME
ON 2-26-02 THAT HE HAD DONE NO SURVEYING SOUTH OF
THE COUNTY LINE IN 1993 AND INDICATED THAT SETTING THE
NORTH QUARTER CORNER OF SECTION ONE AS A CORRECTION
CORNER WOULD NOT BE A PROBLEM WITH HIM. I COULD FIND
NO SURVEYS OF RECORD TIED TO THE NORTH QUARTER CORNER
OF SECTION ONE.

CORNERS TO BE INDEXED

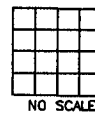
CORNER SECTION TOWNSHIP RANGE
NORTHEAST 1 86N 3W
OFFICE FILE NO.
86301e_021502



PREVIOUSLY RECORDED IN BOOK 1, PAGE 235
MONUMENT DESCRIPTION AND HOW ESTABLISHED FOUND 6"x8"x15"
LIMESTONE 4" BELOW ROAD SURFACE PER DAVID GIBBS TIES FILED IN THE
JONES COUNTY ENGINEER'S OFFICE. TIES CALLED FOR CONC. MONUMENT SET
5/8"x24" REBAR WITH ORANGE CAP LS 14807 ABOVE STONE (GIBB'S TIES
OK. NORTHEAST CORNER SECTION 1, TOWNSHIP 86 NORTH, RANGE 3 WEST,
5TH PRINCIPAL MERIDIAN, JONES COUNTY, IOWA

CORNERS TO BE INDEXED

CORNER SECTION TOWNSHIP RANGE
OFFICE FILE NO.



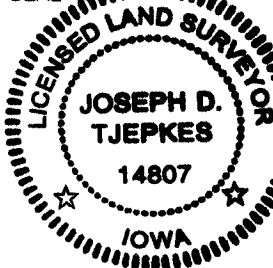
PREVIOUSLY RECORDED IN BOOK _____, PAGE _____
MONUMENT DESCRIPTION AND HOW ESTABLISHED _____

I hereby declare that this plat, survey or report
was made by me or under my direct personal
supervision and that I am a duly registered Land
Surveyor under the laws of the State of Iowa.

Signed:

Joseph D. Tjepkes L.S. Iowa Reg. No. 14807
My Registration Renewal Date is December 31, 2002

SEAL



J.D. TJEPKES LS 14807
JONES COUNTY
ENGINEER'S OFFICE

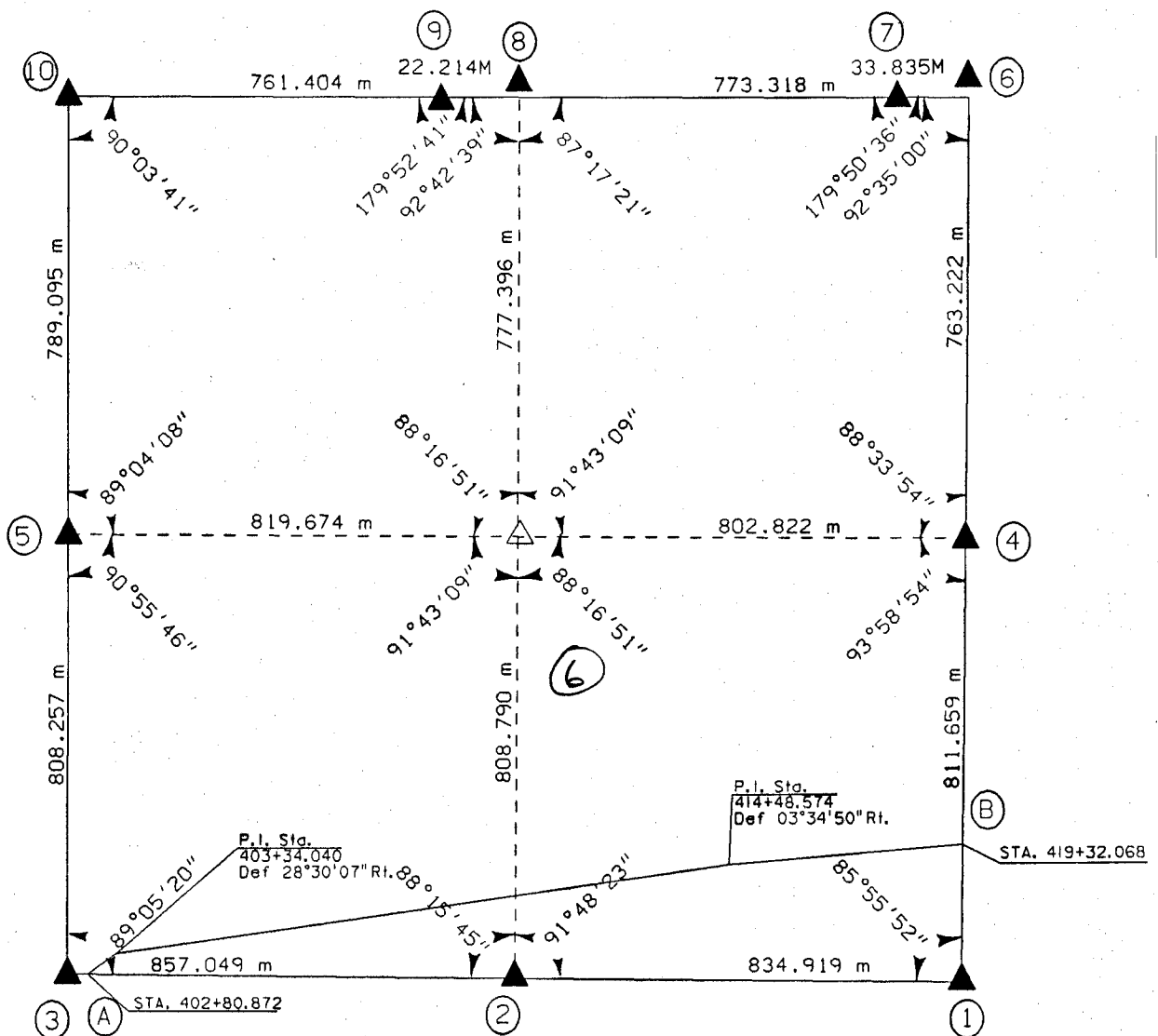
19501 HWY. 64,
ANAMOSA, IOWA,
52205 (319)462-3785

UNITED STATES PUBLIC SECTION CORNER CERTIFICATION
AND LAND CORNER SURVEY
SECTION 6 T-86N R-2W

MADE FOR
IOWA DEPARTMENT OF TRANSPORTATION FOR THE PURPOSE OF
RIGHT OF WAY DESCRIPTIONS ON PRIMARY ROAD No. U.S. 151

MADE BY
MICHAEL R. FAGLE R.L.S. No. 8505
JONES COUNTY, IOWA NHS-151-3(84)--19-57
APRIL 1998 THRU OCTOBER 1998

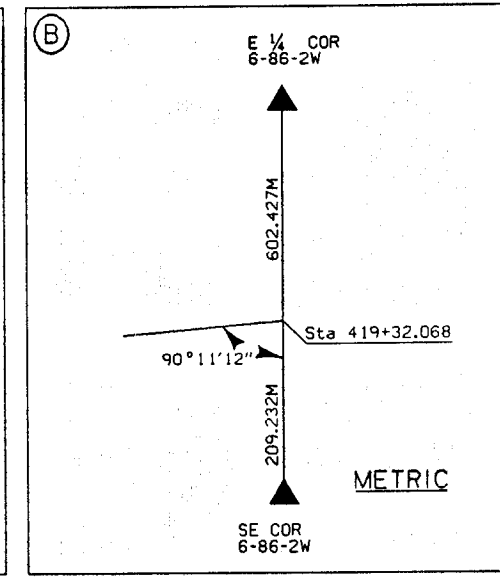
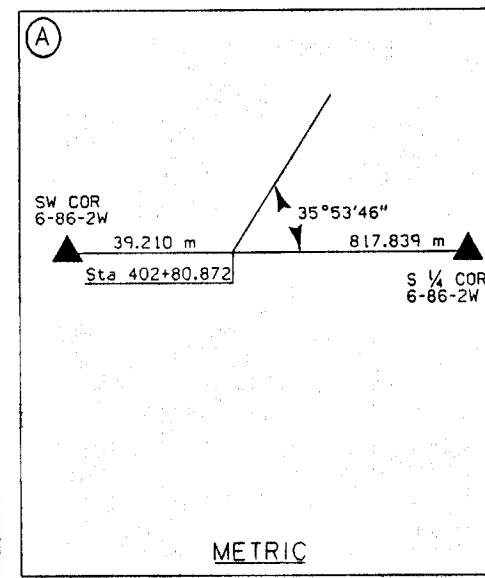
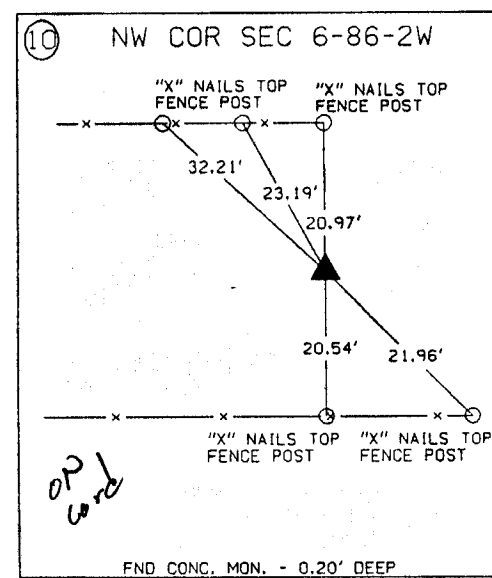
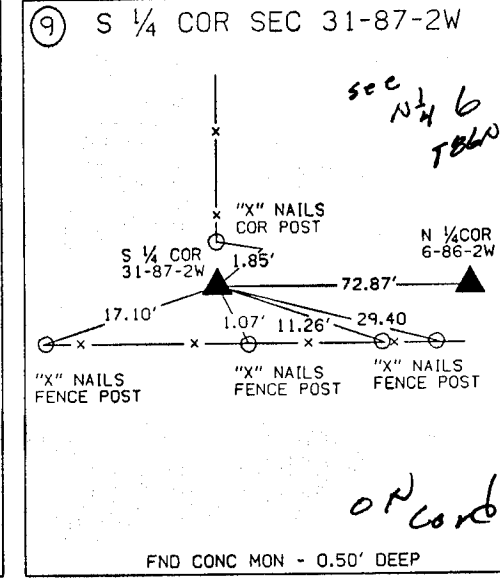
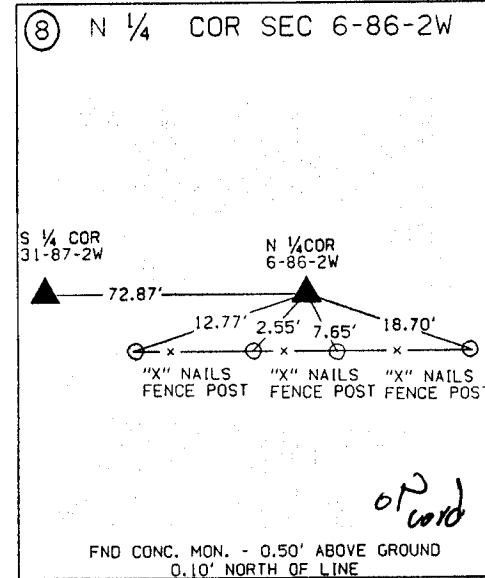
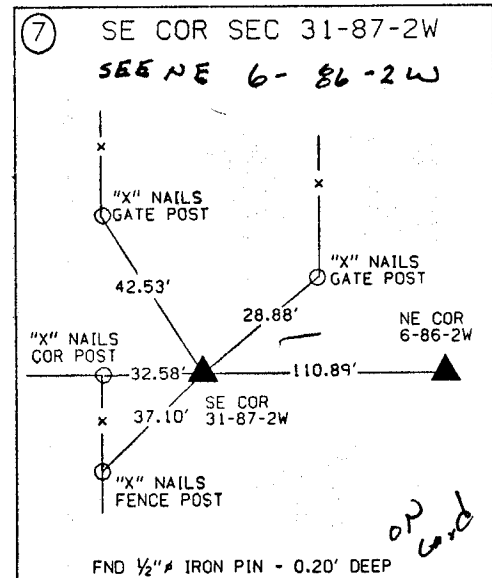
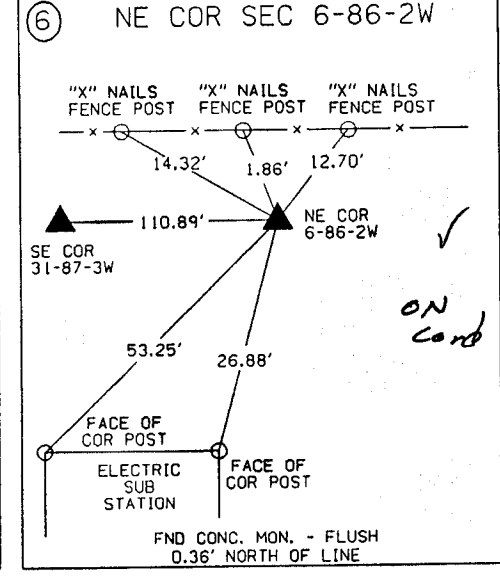
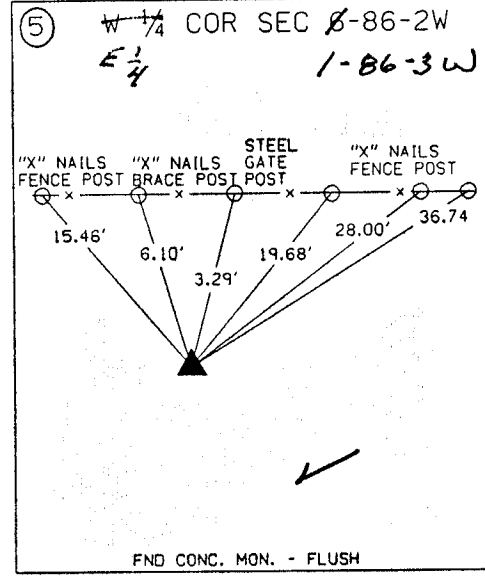
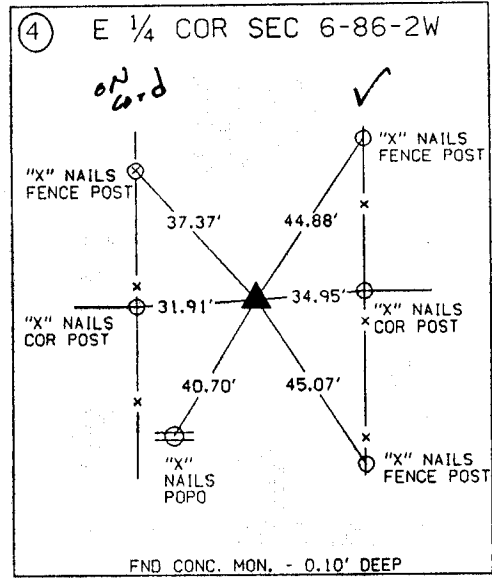
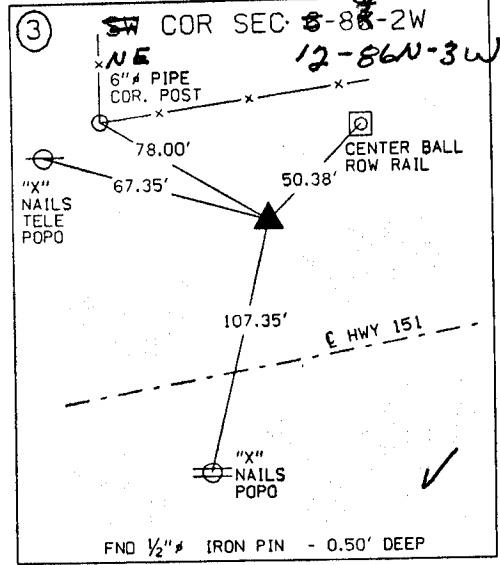
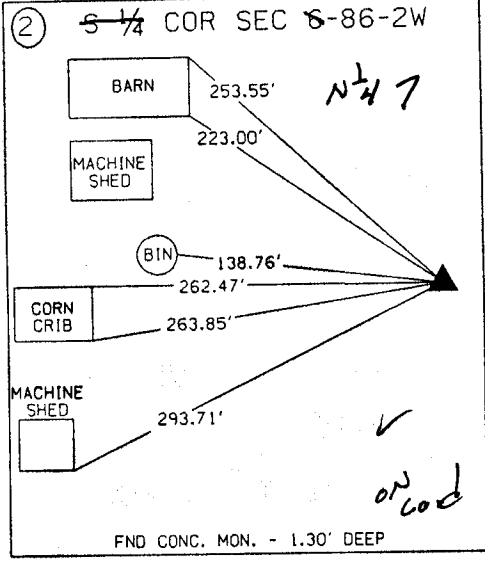
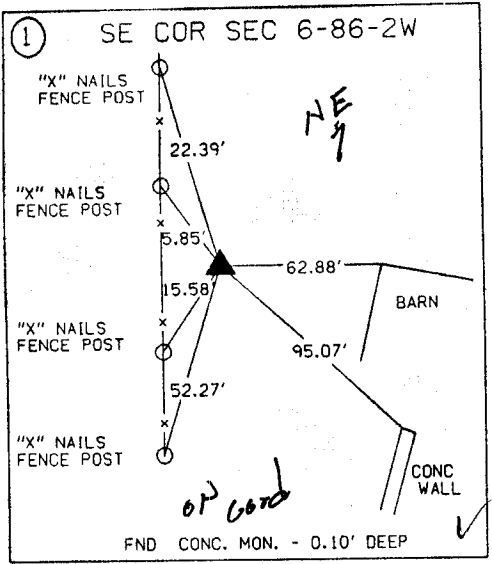
ALL DISTANCES WERE CAREFULLY MEASURED AND MAY NOT AGREE WITH ROAD SURVEY STATIONING



	I hereby certify that this Land Surveying document was prepared by me or under my direct personal supervision and that I am a duly Licensed Land Surveyor under the laws of the State of Iowa.
	Michael R. Fagle 1-21-99 MICHAEL R. FAGLE Date
	License number 8505
	My license renewal date is December 31, 2000
	Pages or sheets covered by this seal: Two (2)

METRIC

UNITED STATES PUBLIC SECTION CORNER CERTIFICATION
 AND LAND CORNER SURVEY *NHS-151-3(84)-19-8157*
 SECTION 6 T-86N R-2W *1-21-99*



ALL TIES ARE ENGLISH UNLESS OTHERWISE NOTED

UNITED STATES PUBLIC LAND SURVEY CORNER CERTIFICATE

OF

Land Survey Monuments situated in Section One (1), Township 86 North, Range Three (3) West, of the Fifth Principal Meridian, Jones County, Iowa. Previously recorded in _____ in County Recorder's Office.

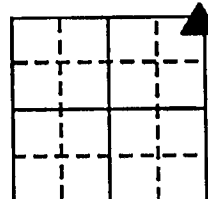
(book, page, document number, etc.)

(Show reason for preparing this certificate, the evidence and detailed procedures used in establishing the corner positions and monumentation found or placed.)

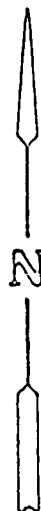
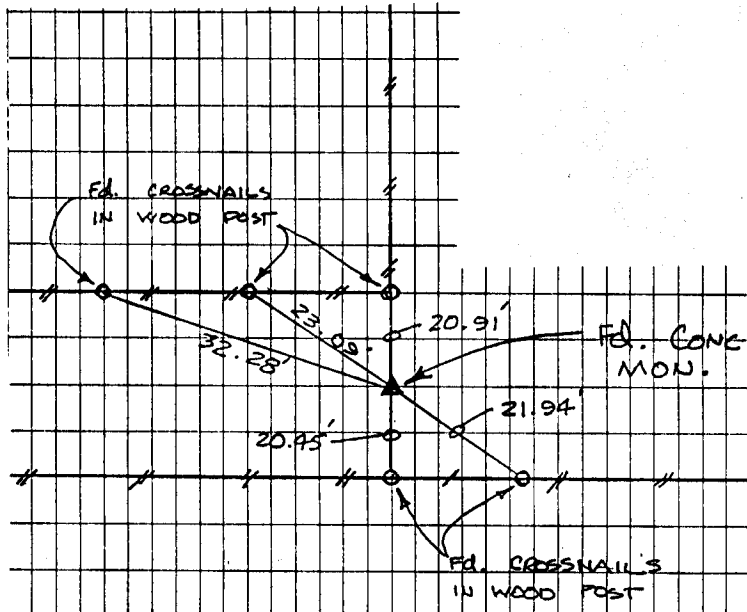
Monument Description and Remarks: No Certificate recorded in the Office of the Jones County Recorder. Found Concrete Monument.

PLAN - VIEW

(Show a minimum of three reference ties to durable physical objects, relevant monuments and physical conditions that will enable recovery of the corner.)



SECTION 1
T86N, R3W



ON CARD 8-23-93 M.S.

DATE OF FIELD WORK: 3/26/93

TSE NO: 93-24

I hereby certify that the survey work was completed and this certificate was prepared by me or under my direct personal supervision and that I am a duly registered land surveyor under the laws of the state of Iowa.

Signature: J. David Gibbs
Name typed or printed: J. David Gibbs

Date: 4/22/93 Reg. No. 8419

Corners	List Corners to be Indexed		
	Section	Twp	Range
NE	1	T86N	R3W

86301e-042293

SEAL

