

2001 3973

FILED
RECORDERS OFFICE
JONES COUNTY IOWA

01 NOV 16 PM 12:00

MARIE KRUTZFIELD
RECORDER No Fee

86320e-102401

1037

86320o-102401

1038

J.D. TJEPKES, LS. JONES COUNTY ENGINEER'S OFFICE, 19501 HWY. 64, ANAMOSA, IOWA, 52205 (319)462-3785

UNITED STATES PUBLIC LAND SURVEY CORNER CERTIFICATE

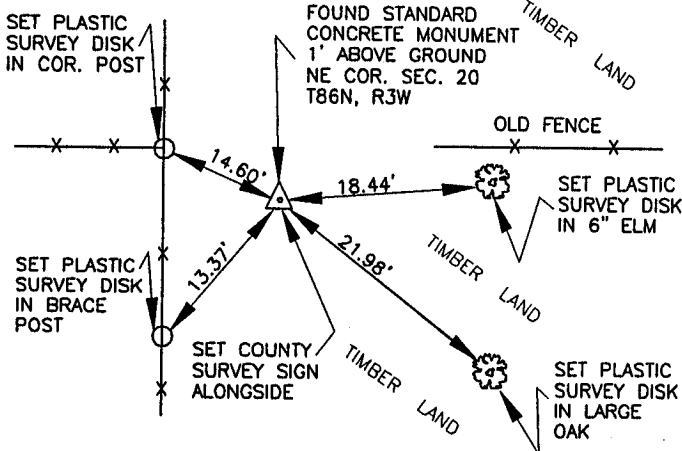
LAND SURVEY MONUMENTS SITUATED IN SECTION 20, TOWNSHIP 86
NORTH, RANGE 3 WEST OF THE 5TH P.M., JONES COUNTY, IOWA

CORNERS TO BE INDEXED

CORNER SECTION TOWNSHIP RANGE
NORTHEAST 20 86N 3W

OFFICE FILE NO. _____

86320e_100101



PREVIOUSLY RECORDED IN BOOK 292, PAGE 277
MONUMENT DESCRIPTION AND HOW ESTABLISHED FOUND
STANDARD CONCRETE MONUMENT 1' ABOVE SURFACE. SET COUNTY
SURVEY SIGN ALONGSIDE. SET REFERENCE POINTS AND TIED OUT
AS INDICATED. NORTHEAST CORNER SECTION 20, TOWNSHIP 86
NORTH, RANGE 3 WEST, 5TH P.M., JONES COUNTY, IOWA

CORNERS TO BE INDEXED

CORNER SECTION TOWNSHIP RANGE

OFFICE FILE NO. _____

PREVIOUSLY RECORDED IN BOOK _____, PAGE _____
MONUMENT DESCRIPTION AND HOW ESTABLISHED _____

CORNERS TO BE INDEXED

CORNER SECTION TOWNSHIP RANGE

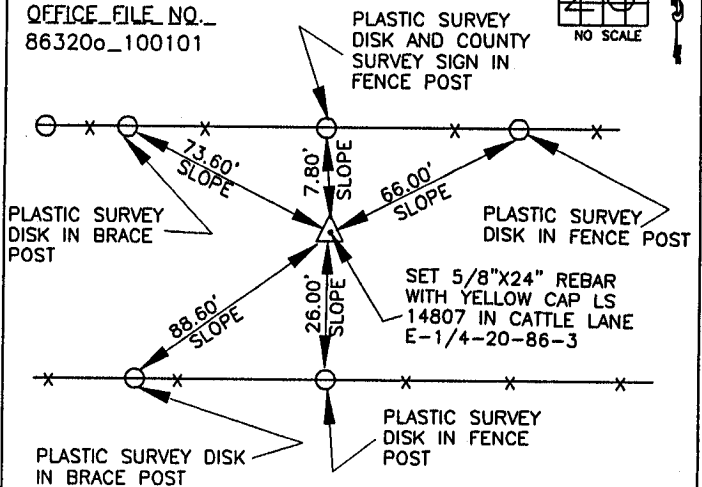
OFFICE FILE NO. _____

CORNERS TO BE INDEXED

CORNER SECTION TOWNSHIP RANGE
E-QUARTER 20 86N 3W

OFFICE FILE NO. _____

86320o_100101



PREVIOUSLY RECORDED IN BOOK _____, PAGE _____
MONUMENT DESCRIPTION AND HOW ESTABLISHED _____

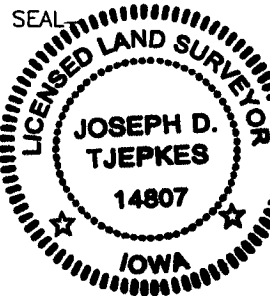
PREVIOUSLY RECORDED IN BOOK N/A, PAGE NA/
MONUMENT DESCRIPTION AND HOW ESTABLISHED SET 5/8"x24"
REBAR WITH YELLOW CAP LS 14807 AT A PROPORTIONATE DISTANCE
FROM THE SE COR. SEC. 20 TO THE NE COR. SEC. 20. SET
COUNTY SURVEY SIGN IN FENCE LINE N-OF COR., SET REFERENCE
POINTS AND TIED OUT AS INDICATED. E-174-20-86-3.

I hereby declare that this plat, survey or report was made by me or under my direct personal supervision and that I am a duly registered Land Surveyor under the laws of the State of Iowa.

Signed:

Joseph D. Tjepkes 10-24-01

Joseph D. Tjepkes L.S. Iowa Reg. No. 14807
My Registration Renewal Date is December 31, 2002



J.D. TJEPKES LS 14807
JONES COUNTY
ENGINEER'S OFFICE

19501 HWY. 64,
ANAMOSA, IOWA,
52205 (319)462-3785