

Instrument #: 2016-0190
 01/21/2016 11:26:03 AM Total Pages: 1
 ZSC SECTION CORNER CERTIFICATE
 Recording Fee: \$7.00 Transfer Tax: \$0
 Sheri L. Jones, Recorder, Jones County Iowa



PREPARED BY: RANDALL L. RATTENBORG 105 WEST MAIN STREET MANCHESTER, IA 52057, 563-927-2434

UNITED STATES PUBLIC LAND SURVEY CORNER CERTIFICATE

Land Survey Monuments situated in Section 22, Township 86 North, Range 3 West of the Fifth Principal Meridian,
Jones County, Iowa.

Previously recorded in County Recorder's Office in W 1/4 CORNER - BOOK 2001, PAGE 1910

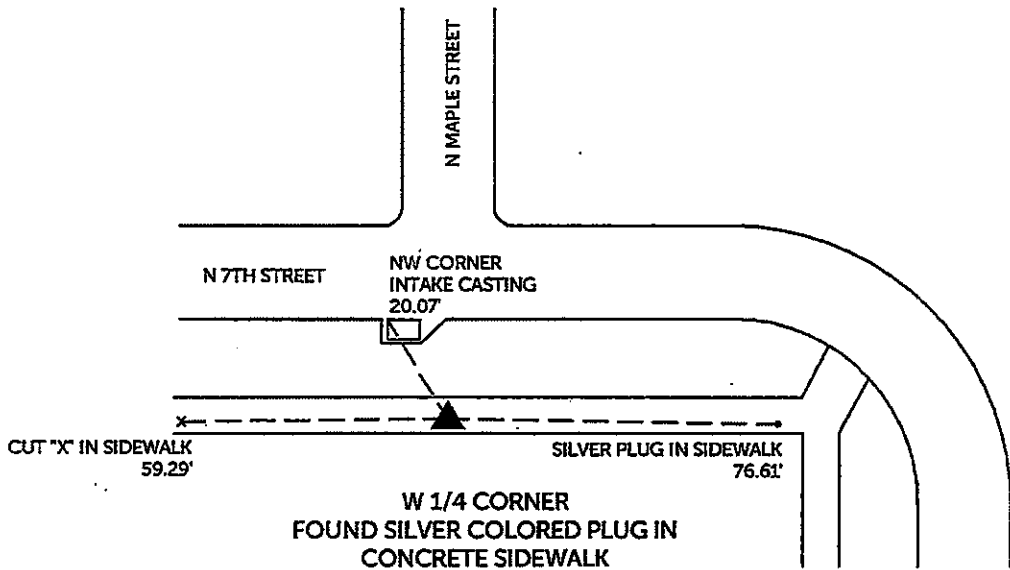
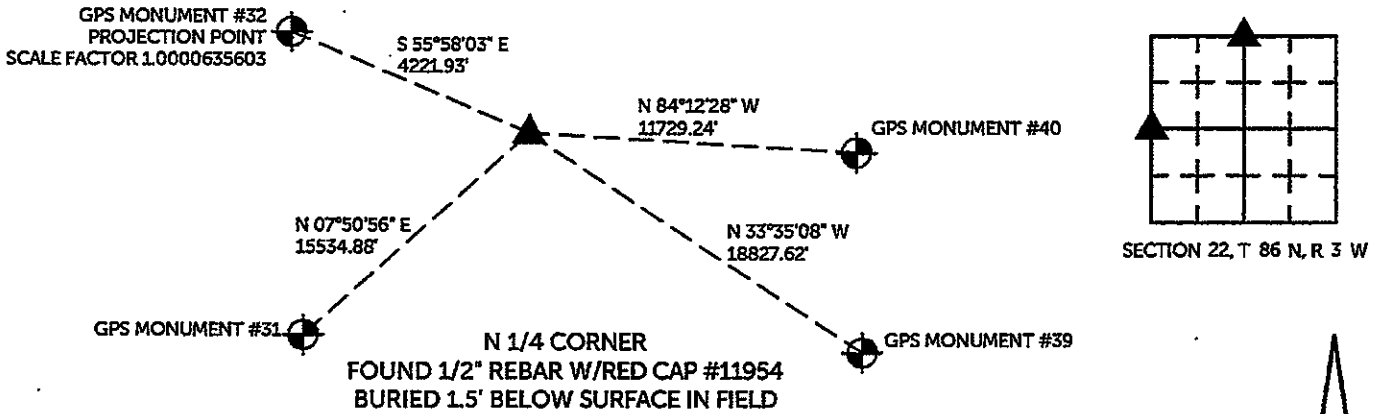
(book, page, document number, etc.)

N 1/4 CORNER, Found 1/2" rebar w/red cap #11954 buried 1.5' below surface in field.

W 1/4 Corner, Found silver colored plug in concrete sidewalk. Previous corner ties calls for a cut "X". This silver colored plug is in the same location as the "X".

PLAN VIEW

(Show a minimum of three reference ties to durable physical objects, relevant monuments and physical conditions that will enable recovery of the corner.)



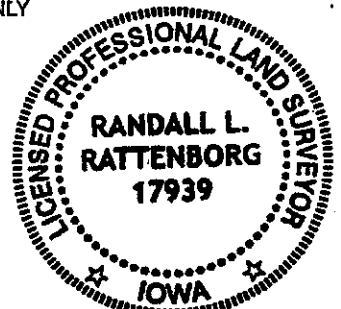
TIES ARE TO PLAT PARCEL 2016-04
 IN SECTION 22, T 86 N, R 3 W

BURRINGTON GROUP, INC. PROJECT NO. 15-147

I HEREBY CERTIFY THAT THIS LAND SURVEYING DOCUMENT
 WAS PREPARED AND THE RELATED SURVEY WORK WAS
 PERFORMED BY ME OR UNDER MY DIRECT PERSONAL
 SUPERVISION AND THAT I AM A DULY LICENSED PROFESSIONAL
 LAND SURVEYOR UNDER THE LAWS OF THE STATE OF IOWA.

SEAL COVERS THIS SHEET ONLY

Randall L. Rattenborg, P.L.S. License #17939 Date 1/18/2016
 My license renewal date is December 31, 2017



List Corners to be Indexed: Section Township Range
 N 1/4 Corner 22 T 86N R 3 W
 W 1/4 Corner

BURRINGTON GROUP, INC.
 Civil Engineering | Land Surveying
 105 W. Main Street Manchester, Iowa 52057

2001 1910

FILED
RECORDERS OFFICE
JONES COUNTY IOWA

01 JUN -6 AM 10:33

MARIE KRUTZFIELD
RECORDER 6:00 Pd

JAMES S. FULLARTON, P. O. BOX 10587, CEDAR RAPIDS, IOWA 52410 (319) 551-7099

UNITED STATES PUBLIC LAND SURVEY CORNER CERTIFICATE

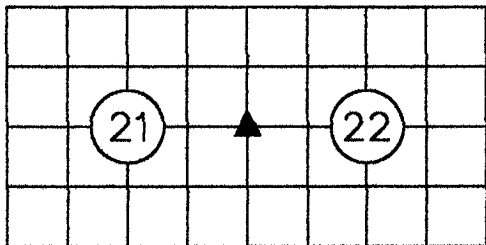
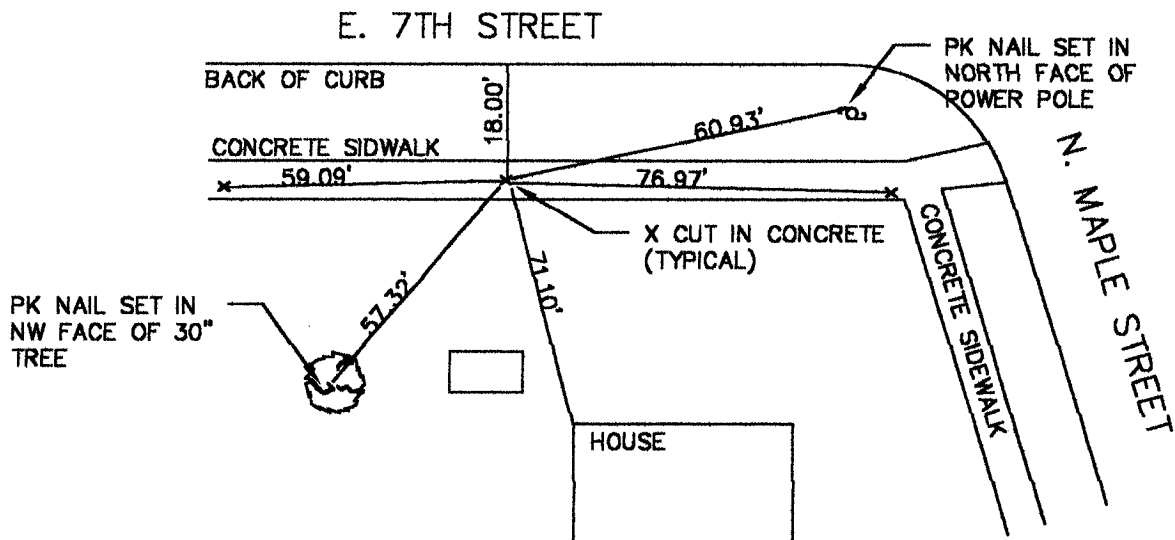
LAND SURVEY MONUMENT LOCATED IN SECTION 21 & 22, TOWNSHIP 86 NORTH, RANGE 3 WEST, OF THE 5TH P.M., JONES COUNTY, IOWA.

MONUMENT NARRATIVE: I FOUND NO RECORD THAT THIS CORNER HAD EVER BEEN TIED OUT. I TRAVERSED BETWEEN THE NE CORNER AND THE SE CORNER OF SECTION 21 TO FIND THAT THE MIDPOINT BETWEEN THE TWO FELL 15' +/- FROM WHERE THE EAST 1/4 CORNER WAS PER THE PLAT RECORDED IN BOOK K, PAGE 66, JONES COUNTY RECORDERS OFFICE. I SET IT WHERE THAT PLAT INDICATED IT TO HAVE BEEN.

NOTE: THIS CORNER CERTIFICATE CORRECTS THE RANGE AND COUNTY OF THE CERTIFICATE RECORDED IN BOOK, 2001 PAGE 1629.

300

EAST 1/4 CORNER,
SECTION 21, T 86 N, R 3 W, 5TH P.M.
WEST 1/4 CORNER,
SECTION 22, T 86 N, R 3 W, 5TH P.M.



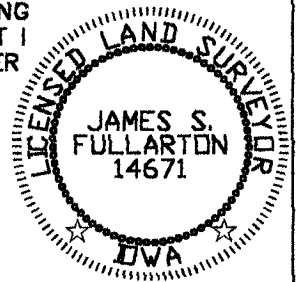
AdTECH LAND SURVEYING

P. O. BOX 10587
CEDAR RAPIDS, IOWA 52410-0587
(319) 551-7099

I HEREBY CERTIFY THAT THIS LAND SURVEYING DOCUMENT WAS PREPARED BY ME AND THAT I AM A DULY LICENSED LAND SURVEYOR UNDER THE LAWS OF THE STATE OF IOWA.

James S. Fullarton 6-4-01
JAMES S. FULLARTON LICENSE #14671

MY LICENSE RENEWAL DATE IS 12-31-2002



DATE: 6-04-2001