

UNITED STATES PUBLIC LAND SURVEY CORNER CERTIFICATE OF

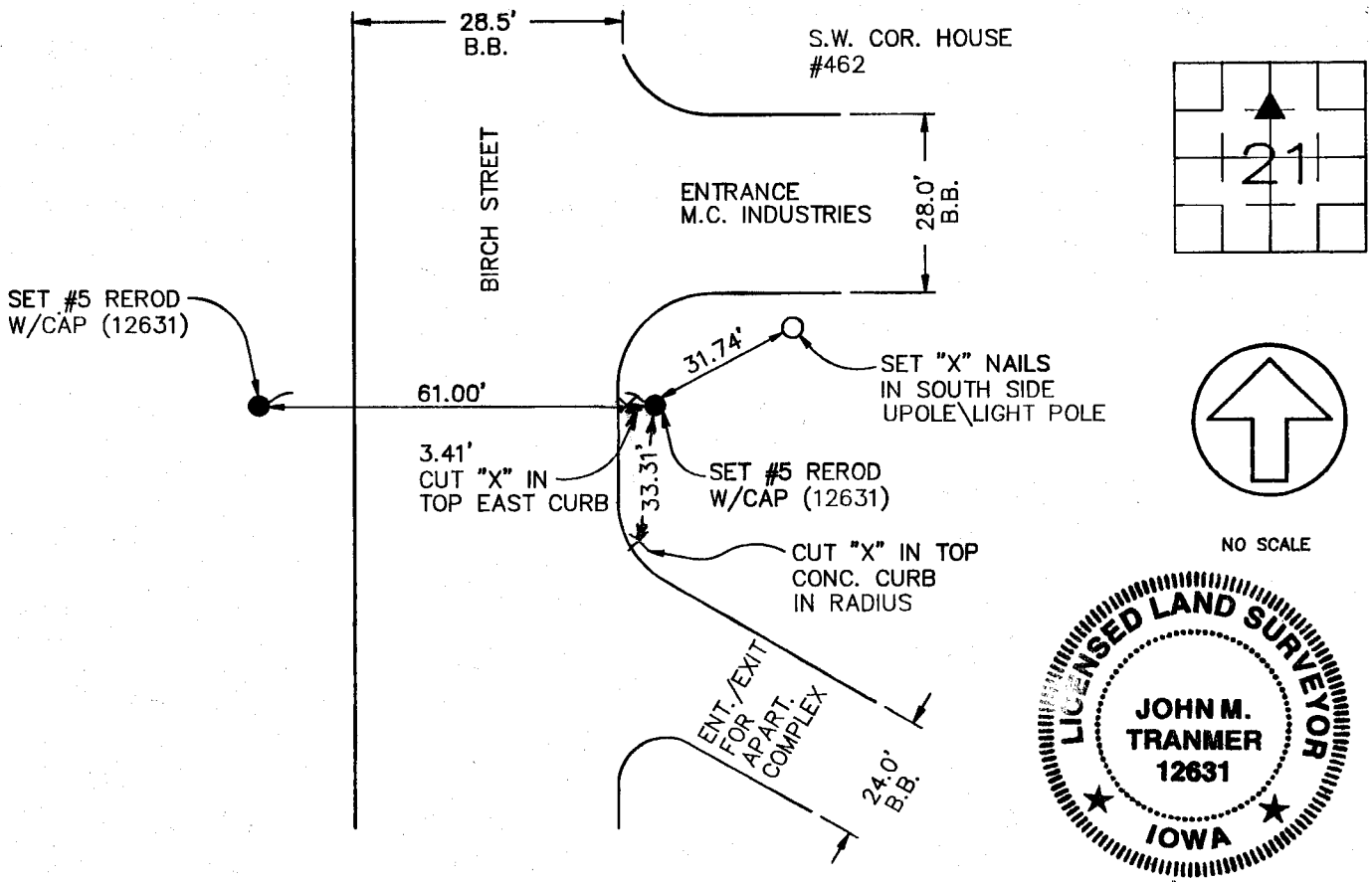
LAND SURVEY MONUMENTS SITUATED IN SECTION 21, TOWNSHIP 86 NORTH, RANGE 3 WEST
OF THE FIFTH PRINCIPAL MERIDIAN, JONES COUNTY, IOWA.
PREVIOUSLY RECORDED IN _____ IN COUNTY RECORDER'S OFFICE.

(Show reason for preparing this certificate, the evidence and detailed procedures used in establishing the corner positions and monumentation found or placed.)

Monument Description and Remarks: _____
NORTHEAST CORNER, SE 1/4, NW 1/4, SECTION 21, T86N, R3W - SET #5 REROD W/CAP (12631)

PLAN - VIEW

(Show a minimum of three reference ties to durable physical objects, relevant monuments and physical conditions that will enable recovery of the corner.)



I HEREBY CERTIFY THAT THE SURVEY WORK WAS COMPLETED AND THIS CERTIFICATE WAS PREPARED BY ME OR UNDER MY DIRECT PERSONAL SUPERVISION AND THAT I AM A DULY REGISTERED LAND SURVEYOR UNDER THE LAWS OF THE STATE OF IOWA.

John M. Tranmer
JOHN M. TRANMER REG. NO. 12631
DATE: 12-6-00
MY REGISTRATION EXPIRES DECEMBER 31, 2002

LIST CORNERS TO BE INDEXED

CORNERS	SECTION	TWP	RANGE
NE COR. SE 1/4, NW 1/4	21	T86N	R3W

IIV ENGINEERS AND SURVEYORS P.C. Iowa, Illinois, Wisconsin 4155 Pennsylvania Ave. Dubuque, Ia. 52002 (319) 556-2464 Guttenberg, IA Galena, IL Cuba City, WI	MONUMENT RECORD		
	COUNTY: <u>JONES</u> TOWNSHIP: <u>LOVELL</u>	DATE: <u>11-11-00</u> REVISED:	FIELD BOOK NO. <u>362</u> PROJ. NO. <u>96068</u>