

2001 3974

FILED  
RECORDERS OFFICE  
JONES COUNTY IOWA

863280-102401  
ID # 1039

01 NOV 16 PM 12:03

MARIE KRUTZFIELD  
RECORDER No Fee

86328t-102401  
ID # 384

J.D. TJEKES, LS. JONES COUNTY ENGINEER'S OFFICE, 19501 HWY. 64, ANAMOSA, IOWA, 52205 (319)462-3785

# UNITED STATES PUBLIC LAND SURVEY CORNER CERTIFICATE

LAND SURVEY MONUMENTS SITUATED IN SECTION 28, TOWNSHIP 86  
NORTH, RANGE 3 WEST OF THE 5TH P.M., JONES COUNTY, IOWA

**CORNERS TO BE INDEXED**

CORNER	SECTION	TOWNSHIP	RANGE
EAST QUARTER	28	86N	3W

OFFICE FILE NO. 863280-102301

PREVIOUSLY RECORDED IN BOOK 1999, PAGE 0324  
MONUMENT DESCRIPTION AND HOW ESTABLISHED FOUND 1/2"  
BENT REBAR LYING ON GROUND AT LOCATION OF CROSSING TIES  
FURNISHED TO JONES COUNTY ENGINEER BY MIKE FAGLE. SET 5/8"  
24" REBAR W/YELLOW CAP LS 14807 AT TIE LOCATION AND TIED  
OUT AS INDICATED. EAST QUARTER CORNER SECTION 28, T86N,  
R3W, 5TH P.M., JONES COUNTY, IOWA.

**CORNERS TO BE INDEXED**

CORNER	SECTION	TOWNSHIP	RANGE
NORTHEAST	28	86N	3W

OFFICE FILE NO. 86328t-102301

PREVIOUSLY RECORDED IN BOOK 1999, PAGE 0324  
MONUMENT DESCRIPTION AND HOW ESTABLISHED FOUND CONC.  
MONUMENT 3" BELOW SURFACE IN CORN FIELD PER TIES FURNISHED BY  
MIKE FAGLE. SET 5/8"x48" REBAR WITH MAGNET ALONGSIDE CONCRETE  
MONUMENT. PUSHED TOP OF REBAR DOWN TO WITHIN 2' OF SURFACE.  
SET REFERENCE POINTS AND TIED OUT AS INDICATED. NORTHEAST CORNER,  
SOUTHEAST QUARTER, SOUTHEAST QUARTER, SECTION 28, TOWNSHIP 86 NORTH,  
RANGE 3 WEST, 5TH PRINCIPAL MERIDIAN, JONES COUNTY, IOWA.

**CORNERS TO BE INDEXED**

CORNER	SECTION	TOWNSHIP	RANGE

OFFICE FILE NO. \_\_\_\_\_

PREVIOUSLY RECORDED IN BOOK \_\_\_\_\_, PAGE \_\_\_\_\_  
MONUMENT DESCRIPTION AND HOW ESTABLISHED \_\_\_\_\_

**CORNERS TO BE INDEXED**

CORNER	SECTION	TOWNSHIP	RANGE

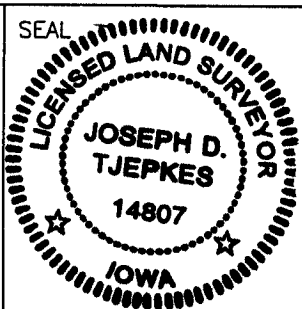
OFFICE FILE NO. \_\_\_\_\_

PREVIOUSLY RECORDED IN BOOK \_\_\_\_\_, PAGE \_\_\_\_\_  
MONUMENT DESCRIPTION AND HOW ESTABLISHED \_\_\_\_\_

I hereby declare that this plat, survey or report was made by me or under my direct personal supervision and that I am a duly registered Land Surveyor under the laws of the State of Iowa.

Signed: *[Signature]*

Joseph D. Tjepkes L.S. Iowa Reg. No. 14807  
My Registration Renewal Date is December 31, 2002



J.D. TJEKES LS 14807  
JONES COUNTY  
ENGINEER'S OFFICE

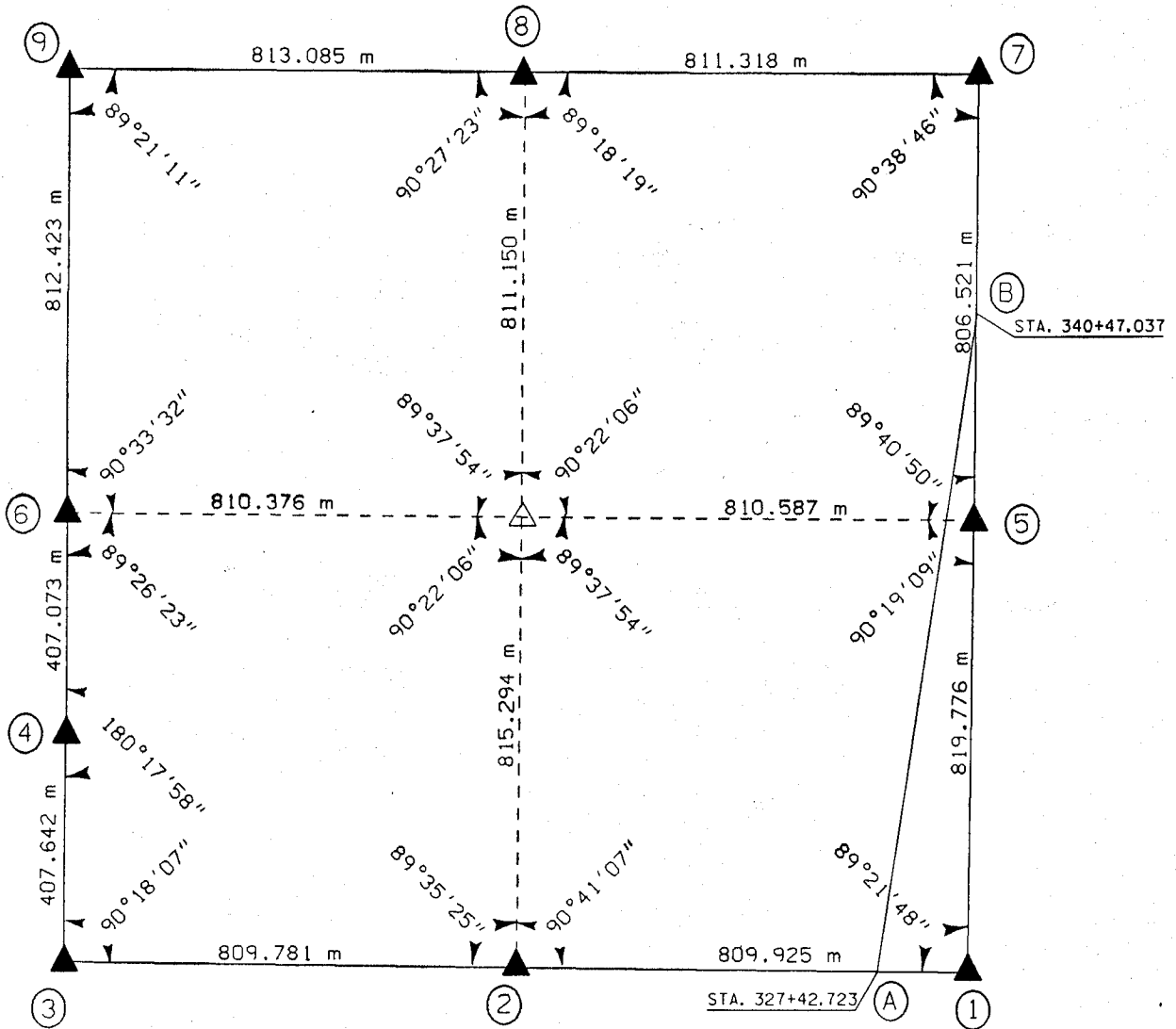
19501 HWY. 64,  
ANAMOSA, IOWA,  
52205 (319)462-3785

UNITED STATES PUBLIC SECTION CORNER CERTIFICATION  
AND LAND CORNER SURVEY  
SECTION 27 T-86N R-3W

MADE FOR  
IOWA DEPARTMENT OF TRANSPORTATION FOR THE PURPOSE OF  
RIGHT OF WAY DESCRIPTIONS ON PRIMARY ROAD No. U.S. 151

MADE BY  
MICHAEL R. FOGLE R.L.S. No. 8505  
JONES COUNTY, IOWA NHS-151-3(84)--19-57  
APRIL 1998 THRU OCTOBER 1998

ALL DISTANCES WERE CAREFULLY MEASURED AND MAY NOT AGREE WITH ROAD SURVEY STATIONING



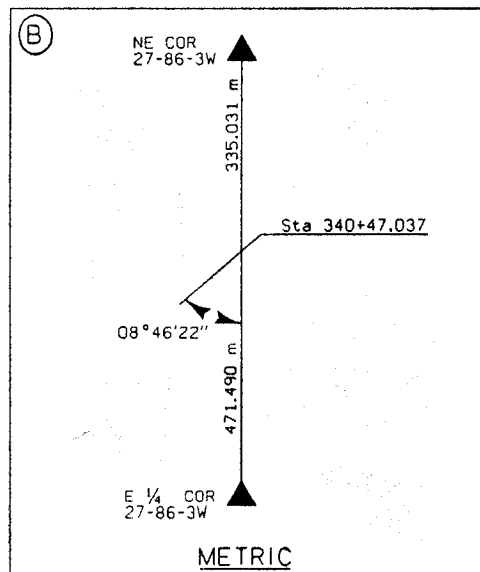
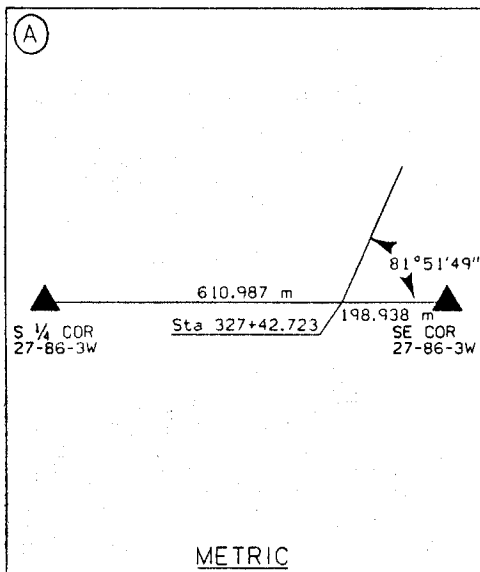
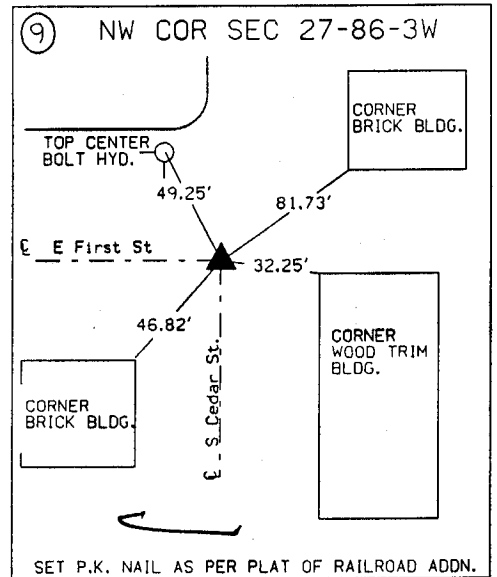
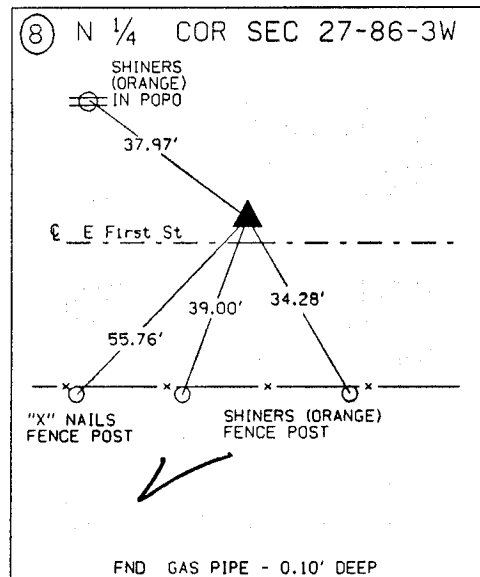
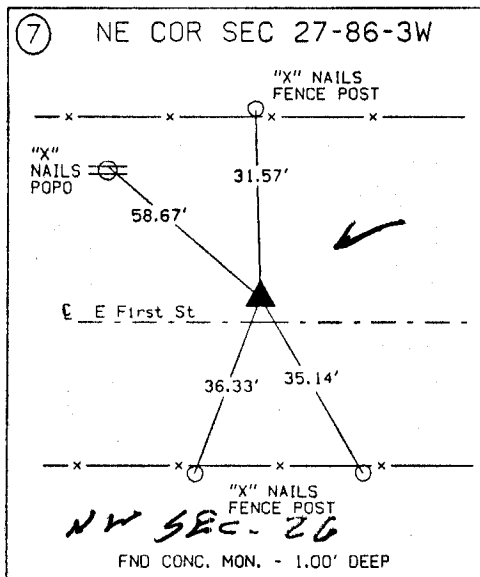
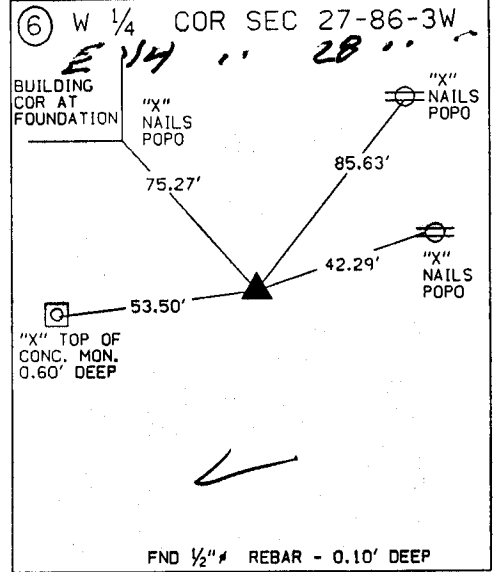
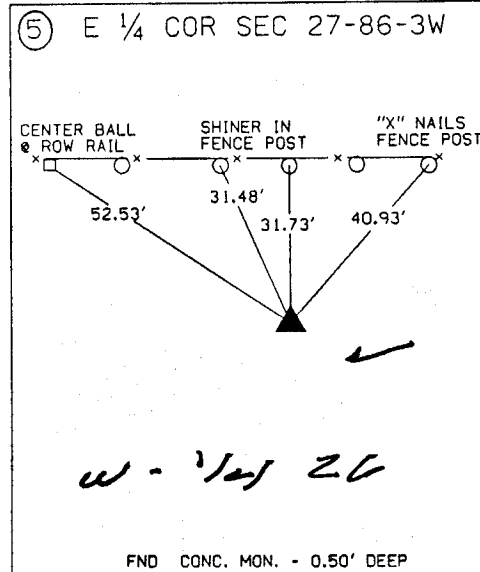
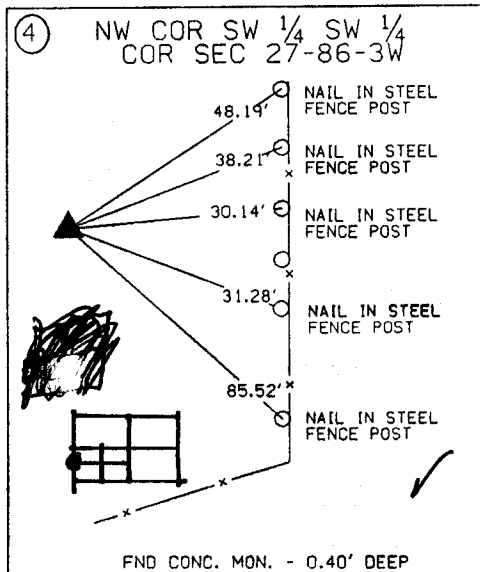
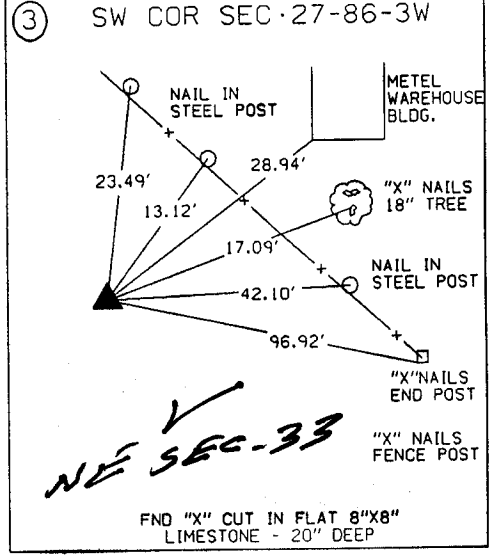
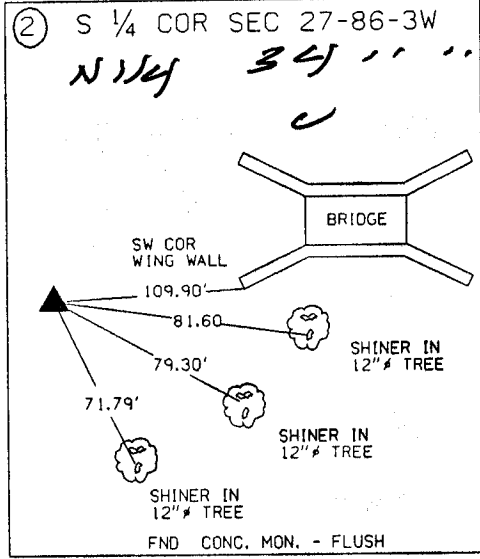
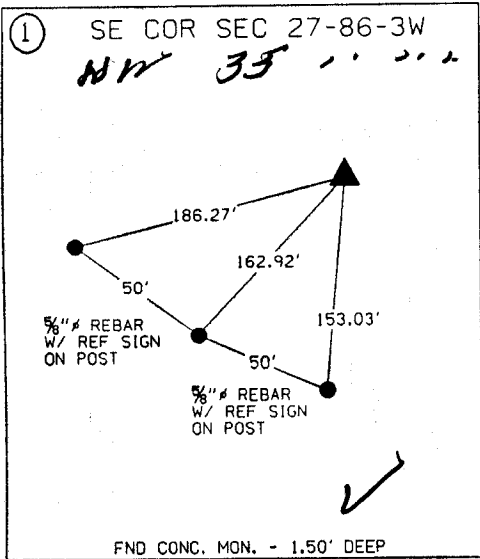
86328e-012199  
86327c-012199  
86327e-012199  
863280-012199  
863270-012199  
86327f-012199

EARTH TECH

	I hereby certify that this Land Surveying document was prepared by me or under my direct personal supervision and that I am a duly Licensed Land Surveyor under the laws of the State of Iowa.	
	<i>Michael R. Fogle</i> MICHAEL R. FOGLE	1-21-99 Date
	License number 8505	
	My license renewal date is December 31, 2000	
Pages or sheets covered by this seal: <i>Two (2)</i>		

**METRIC**

UNITED STATES PUBLIC SECTION CORNER CERTIFICATION  
AND LAND CORNER SURVEY  
SECTION 27 T-86N R-3W



**ALL TIES ARE ENGLISH UNLESS OTHERWISE NOTED**

# SECTION CORNER CERTIFICATE

OF  
 LAND SURVEY MONUMENTS SITUATED IN SECTION 28, TOWNSHIP 86 NORTH,  
 RANGE 3 WEST, OF THE FIFTH PRINCIPAL MERIDIAN, JONES, COUNTY, IOWA.

PREVIOUSLY RECORDED IN BOOK \_\_\_\_\_ AT PAGE \_\_\_\_\_

FOR RECORDER'S USE

**REASON FOR PREPARING CERTIFICATE:**

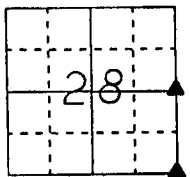
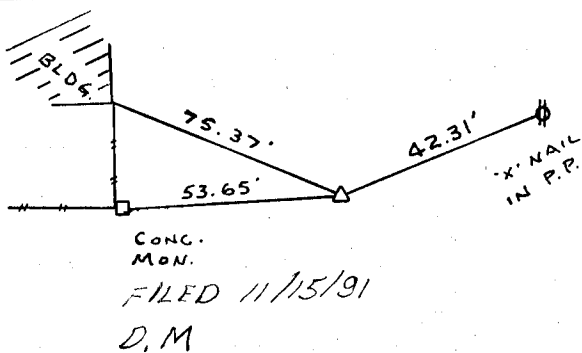
- A) THERE IS NO CERTIFICATE FOR THE CORNER ON FILE WITH THE RECORDER OF THE COUNTY IN WHICH THE CORNER IS LOCATED.
- B) CORNER POSITION DIFFERS FROM THAT SHOWN IN THE PUBLIC RECORDS OF THE COUNTY IN WHICH THE CORNER IS LOCATED.
- C) THE CORNER MONUMENT HAS BEEN REPLACED OR MODIFIED.
- D) THE REFERENCE TIES REFERRED TO IN AN EXISTING PUBLIC RECORD ARE INCORRECT.

**MONUMENT DESCRIPTION AND REMARKS :**

E 1/4 CORNER SECTION 28, T86N, R3W; FOUND 5/8" # REBAR  
 4" DEEP  
 S.E. CORNER SECTION 28, T86N, R3W; FOUND 5/8" # REBAR  
 12" DEEP

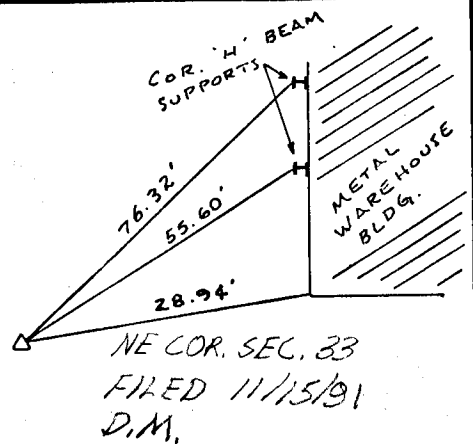
## RECOVERY TIE DRAWING

E 1/4 COR. 28-86-3



NOT TO SCALE

S.E. COR. 28-86-3



I, GLEN D. MEISNER, CERTIFY THAT THE CORNER LOCATION(S) SHOWN ON THIS RECORD WERE DETERMINED BY ME OR UNDER MY DIRECTION AND CONTROL AND THAT THIS U.S. PUBLIC LAND SURVEY MONUMENT RECORD IS CORRECT AND COMPLETE TO THE BEST OF MY KNOWLEDGE AND BELIEF.



Glen D. Meisner 11-6-91  
 GLEN D. MEISNER L.S. NO 8165 DATE

DZMGR	GOVERNMENT CORNER 5/8" TIE PIN SET CENTERLINE EXISTING FENCE LINE R.O.W. LINE	SHEET TITLE: U.S. PUBLIC LAND SURVEY RECORD PROJECT TITLE: WELTER SURVEY	<b>H</b> HALL AND HALL ENGINEERS, INC. 226 29TH STREET DRIVE S.E. CEDAR RAPIDS, IOWA 52403 319-362-9548
	DW N R.W.B. KIC G.D.M. APP	DATE 8-27-91 SCALE NONE F NO OT 22 P NO PROJ 4507	

463280-110691 . 86333e-110691