

2003 08 50

FILED  
RECORDERS OFFICE  
JONES COUNTY IOWA

03 FEB 27 PM 12:14

MARIE KRUTZFIELD  
RECORDER 6.00Pd

TeKIPPE ENGINEERING, P.C., 128 South Vine Street, West Union, Iowa 52175 Phone (563) 422-5131

### UNITED STATES PUBLIC LAND SURVEY CORNER CERTIFICATE

OF

Land Survey Monuments situated in Section 27, Township 86 North, Range 3 West of the Fifth Principal Meridian, JONES County, Iowa. Previously recorded in (1) none (2) Book 425, Page 208 in County Recorder's Office. (book, page, document number, etc.)

(Show reason for preparing this certificate, the evidence and detailed procedures used in establishing the corner positions and monumentation found or placed.)

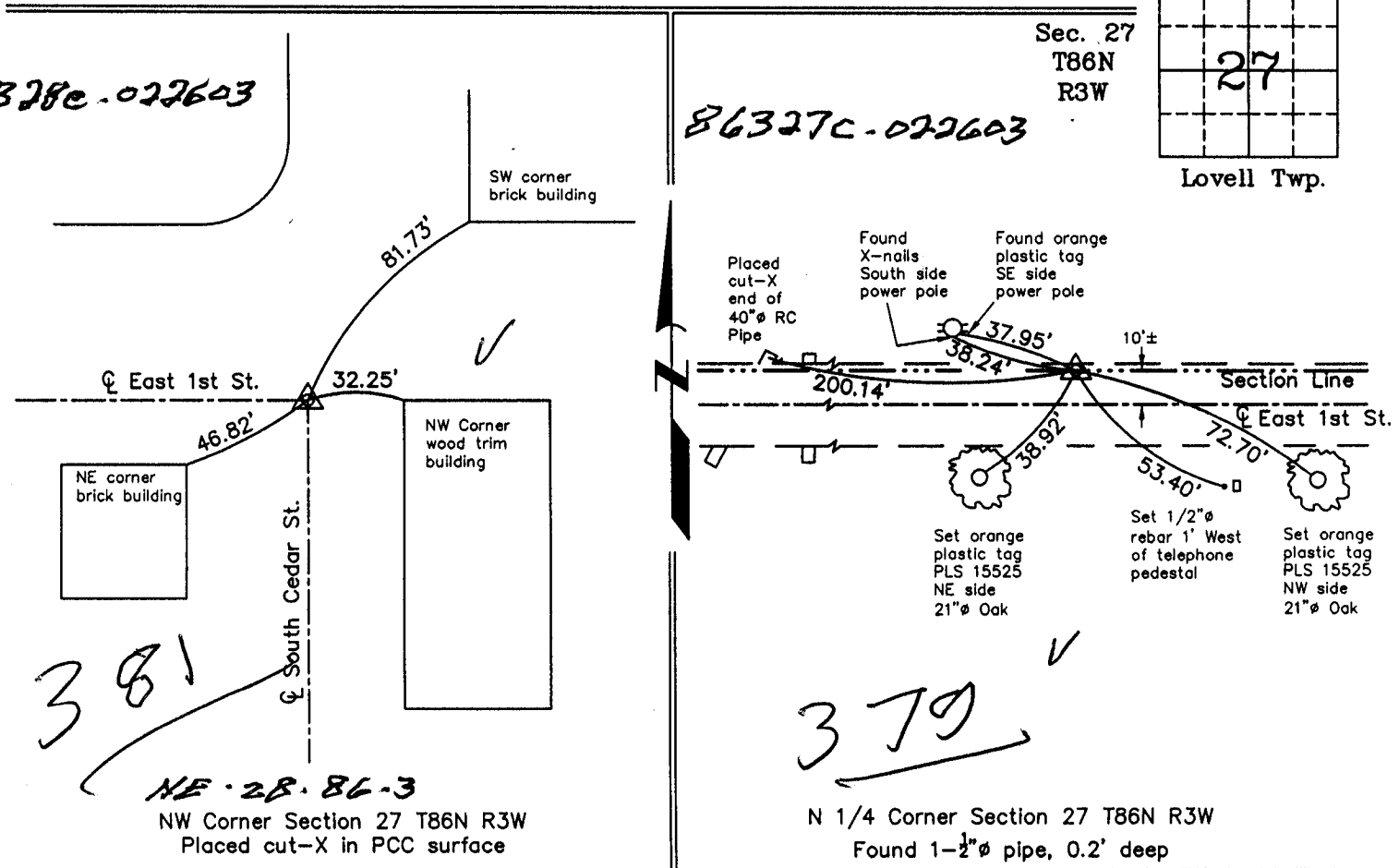
Monument Description and Remarks: (1) NW Corner Section 27 T86N R3W: Placed cut-X in PCC surface using reference ties obtained from Section Corner Certification and Land Corner Survey made by Michael R. Fagle for Jones County Project, U.S. Hwy. 151, NHS-151-3(84)--19-57.

(2) N 1/4 Corner Section 27 T86N R3W: Found 1-1/2"Ø pipe with information obtained from the previous Section Corner Certificate recorded in the Jones County Recorder's Office May 20, 1997 in Book 425, Page 208. Two reference ties were missing. Four reference ties were added.

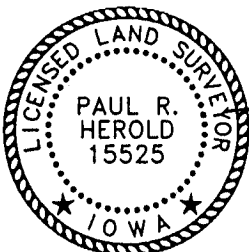
### PLAN - VIEW

Project Number 03602.LS  
FB. 16D PG. 53-57

(Show a minimum of three reference ties to durable physical objects, relevant monuments and physical conditions that will enable recovery of the corner.)



I hereby certify that this land surveying document was prepared and the related survey work was performed by me or under my direct personal supervision and that I am a duly licensed Land Surveyor under the laws of the State of Iowa.



*Paul R. Herold* 2-26-03  
Paul R. Herold Date  
License number 15525  
My license renewal date is December 31, 2004.  
Sheets covered by this seal: Individual

List Corners to be Indexed			
Corners	Section	Twp.	Range
NW	27	86N	3W
N 1/4	27	86N	3W

X:\Section Corners\Sec. 27\27-86-3ac.dwg

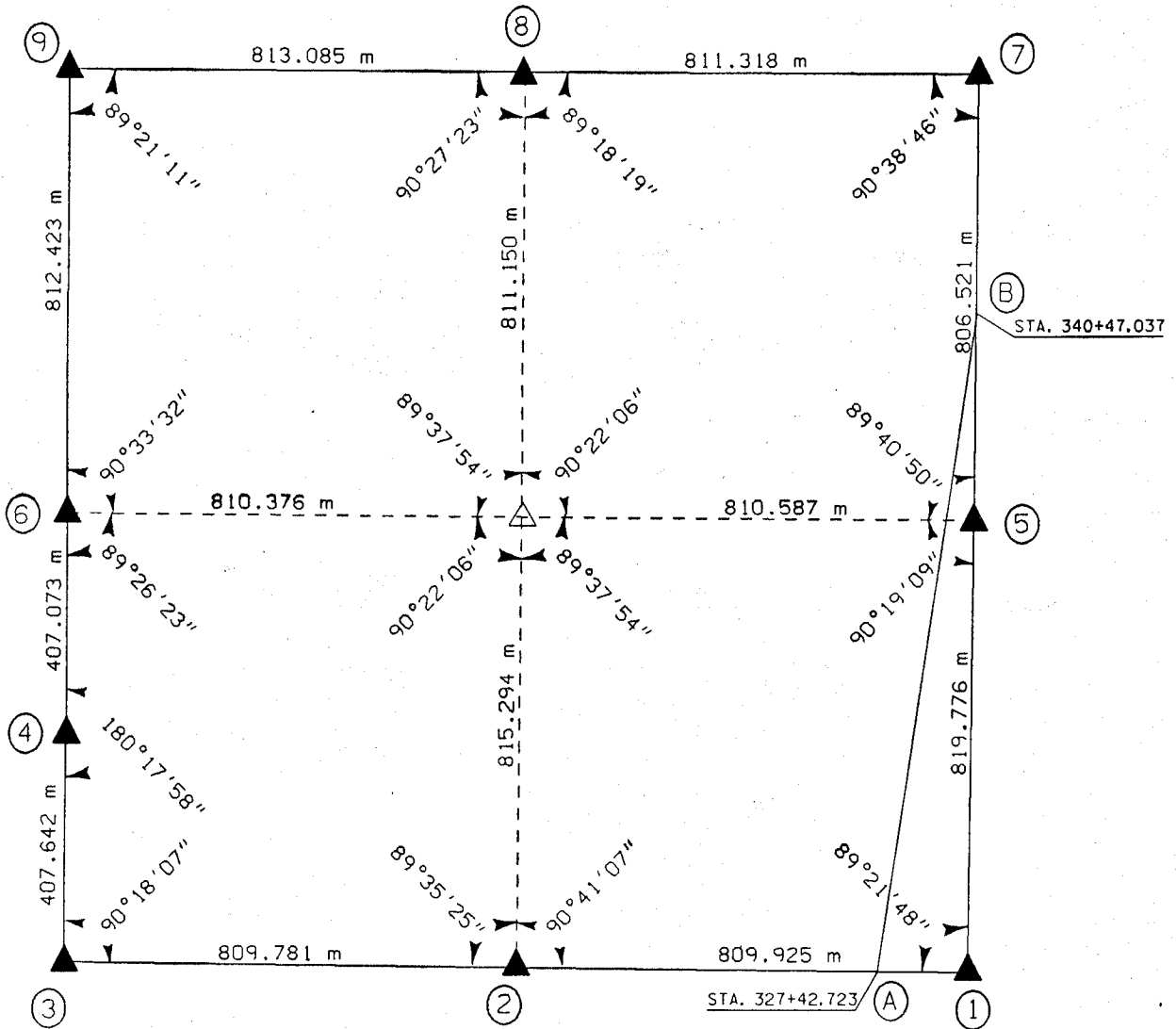
County Engineer's Copy

UNITED STATES PUBLIC SECTION CORNER CERTIFICATION  
AND LAND CORNER SURVEY  
SECTION 27 T-86N R-3W

MADE FOR  
IOWA DEPARTMENT OF TRANSPORTATION FOR THE PURPOSE OF  
RIGHT OF WAY DESCRIPTIONS ON PRIMARY ROAD No. U.S. 151

MADE BY  
MICHAEL R. FAGLE R.L.S. No. 8505  
JONES COUNTY, IOWA NHS-151-3(84)--19-57  
APRIL 1998 THRU OCTOBER 1998

ALL DISTANCES WERE CAREFULLY MEASURED AND MAY NOT AGREE WITH ROAD SURVEY STATIONING



86328e-012199  
86327c-012199  
86327e-012199  
863280-012199  
863270-012199  
86327f-012199

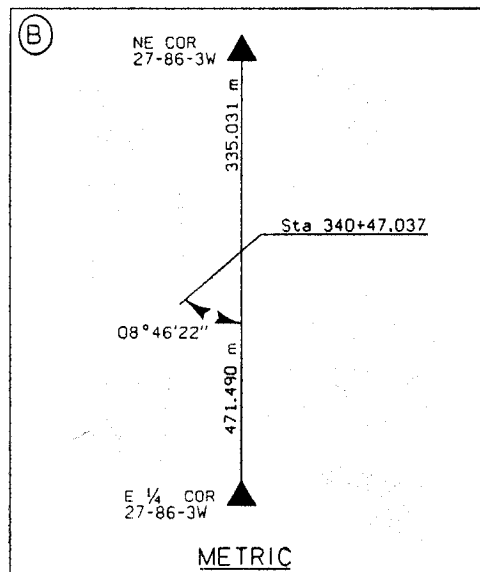
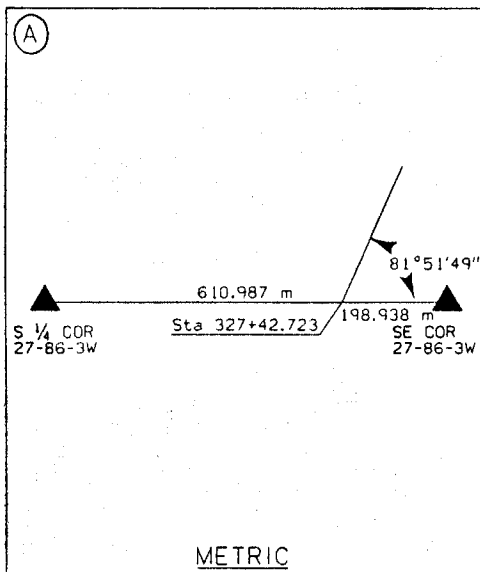
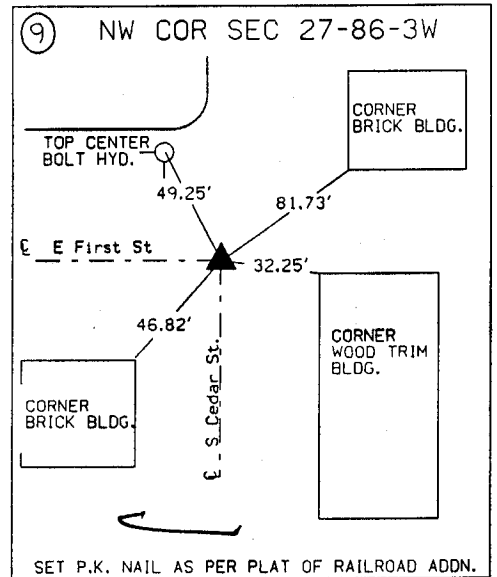
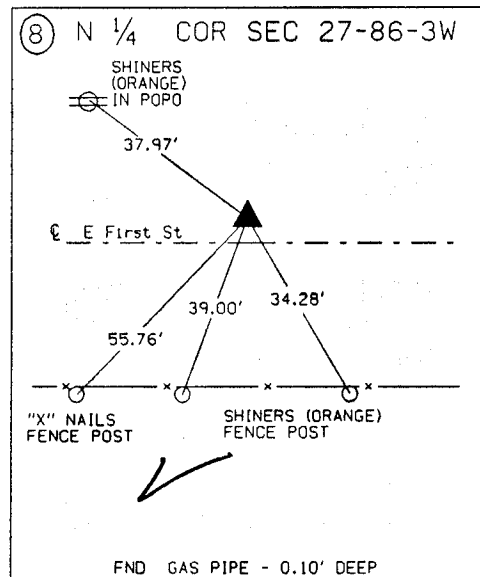
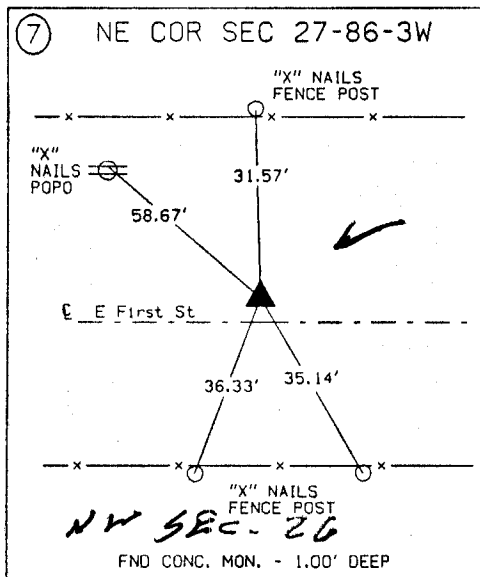
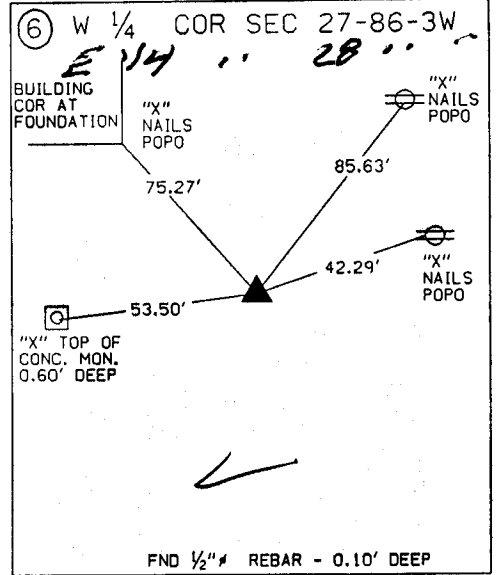
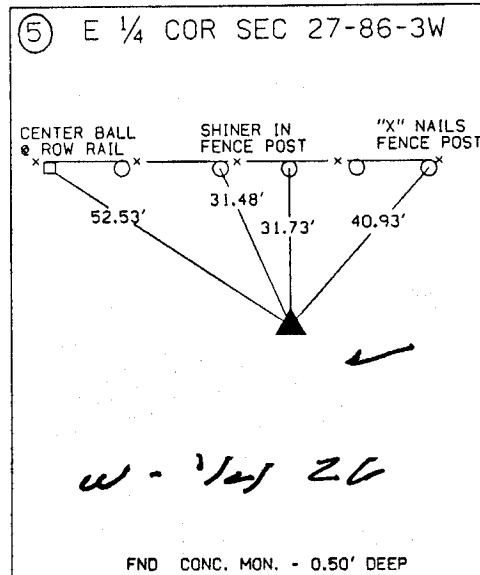
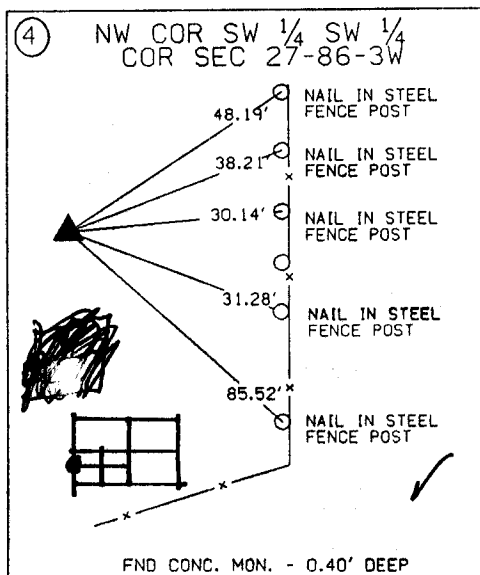
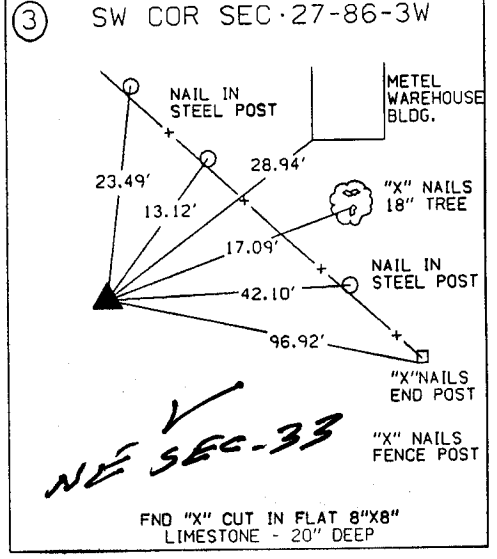
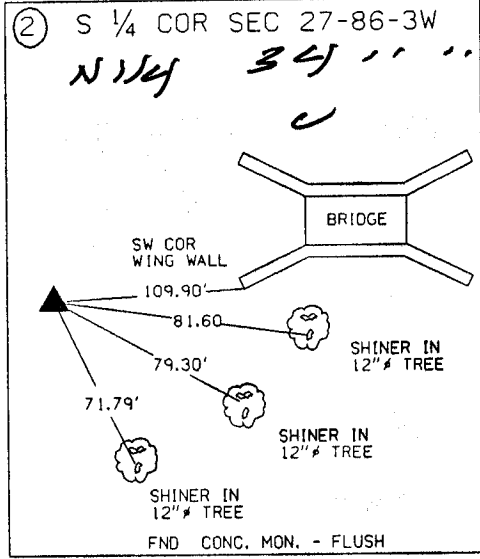
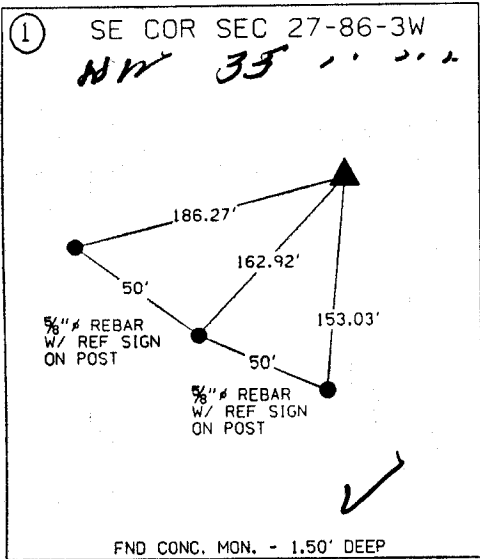
EARTH TECH



	I hereby certify that this Land Surveying document was prepared by me or under my direct personal supervision and that I am a duly Licensed Land Surveyor under the laws of the State of Iowa.	
	Michael R. Fagle MICHAEL R. FAGLE	1-21-99 Date
	License number 8505	
	My license renewal date is December 31, 2000 Pages or sheets covered by this seal: Two (2)	

METRIC

UNITED STATES PUBLIC SECTION CORNER CERTIFICATION  
AND LAND CORNER SURVEY  
SECTION 27 T-86N R-3W



**ALL TIES ARE ENGLISH UNLESS OTHERWISE NOTED**