

COPY

Jones County Iowa
 Marie Krutzfield, Recorder
 Fee Book 2010 1567

06/16/2010 @1052AM
 ZSC SEC COR CERT
 Book: Page: # Pages: 1
 Total Fees: \$0.00

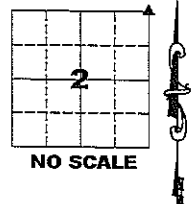
PREPARED BY

CLARENCE J. WALTON, JONES COUNTY ENGINEER'S OFFICE, 19501 HWY. 64, ANAMOSA, IOWA, 52205 (319) 462-3785

UNITED STATES PUBLIC LAND
 SURVEY CORNER CERTIFICATE

LAND SURVEY MONUMENTS SITUATED IN SECTION 2, TOWNSHIP 86 NORTH,
 RANGE 3 WEST OF THE 5TH PRINCIPAL MERIDIAN, JONES COUNTY, IOWA.

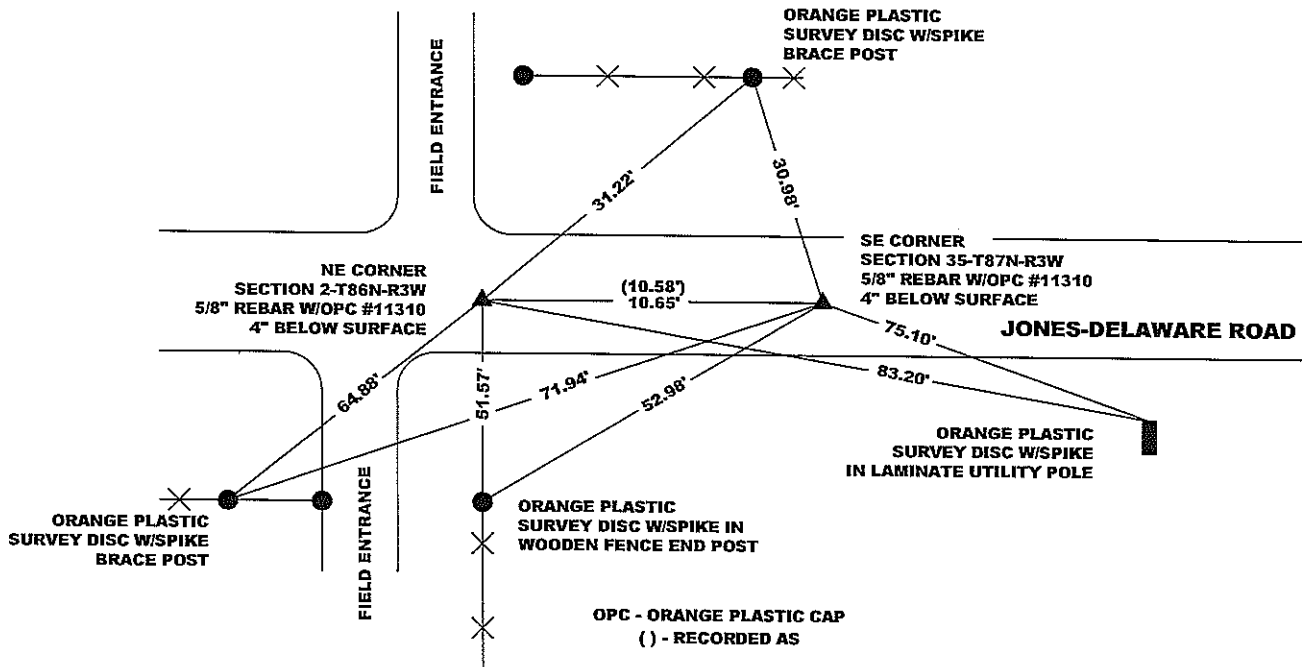
CORNER SECTION TOWNSHIP RANGE
 NE 2 86N 3W



OFFICE FILE NO.

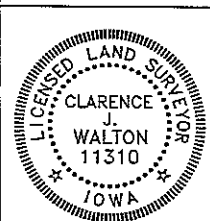
STATE PLANE COORDINATE
 NAD 83 IOWA NORTH
 N
 E

NOTE:
 THE STATE PLANE COORDINATE AS INDICATED IS FOR CONVENIENCE ONLY.
 THE TIES AS SHOWN SHOULD BE USED TO REPLACE THE CORNER, IF
 DESTROYED



PREVIOUSLY RECORDED IN BOOK 2002, PAGE 0742

MONUMENT DESCRIPTION AND HOW ESTABLISHED REPLACED CORNER AFTER ROAD CONSTRUCTION W/5/8" REBAR W/OPC "JONES COUNTY 11310"
 AT POSITION AS FOUND DURING PRELIMINARY SURVEY FOR ROAD GRADING PROJECT.



I hereby certify that this land surveying document and the related survey work was performed by me or under my direct personal supervision and that I am a duly registered Land Surveyor under the laws of the State of Iowa.

Signed: *Clarence J. Walton* 6/16/10
 Clarence J. Walton, L.S.
 My Registration Renewal Date is December 31, 2011
 Iowa License Number 11310
 Pages or sheets covered by this seal: 1 of 1.

- A. THERE IS NO CERTIFICATE FOR THE CORNER ON FILE WITH THE RECORDER OF THE COUNTY IN WHICH THE CORNER IS LOCATED.
- B. THE CORNER MONUMENT HAS BEEN REPLACED OR MODIFIED.
- C. THE SURVEYOR IN RESPONSIBLE CHARGE OF THE LAND SURVEYING ACCEPTS A CORNER POSITION THAT DIFFERS FROM THAT SHOWN IN THE PUBLIC RECORDS OF THE COUNTY IN WHICH THE CORNER IS LOCATED.
- D. THE REFERENCE TIES REFERRED TO IN AN EXISTING PUBLIC RECORD NO LONGER EXIST.

CORNERS TO BE INDEXED

CORNER	SECTION	TOWNSHIP	RANGE
NE CORNER	2	86N	3W
NW CORNER	1	86N	3W

JONES COUNTY ENGINEER'S OFFICE



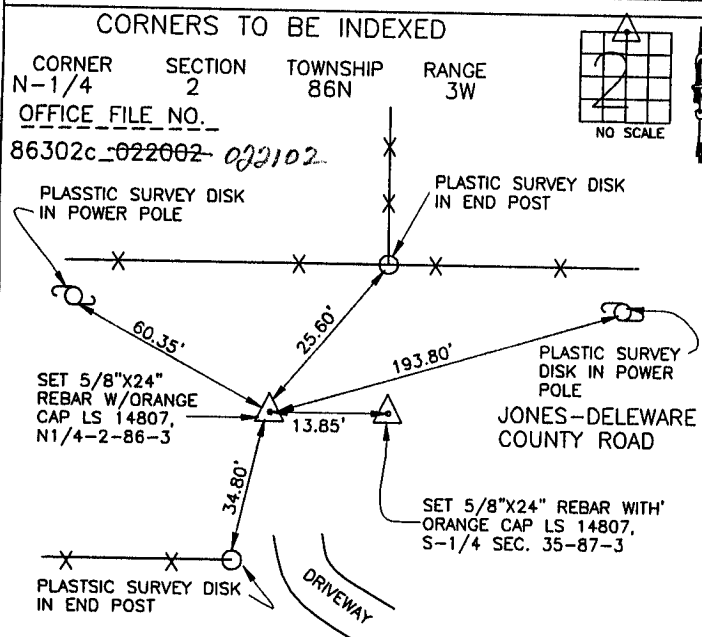
19501 HWY. 64, ANAMOSA, IOWA 52205
 (319) 462-3785

2002 0742
 FILED
 RECORDERS OFFICE
 JONES COUNTY IOWA
 02 FEB 27 AM 8:53
 MARIE KRUTZFIELD
 RECORDER NO FEE

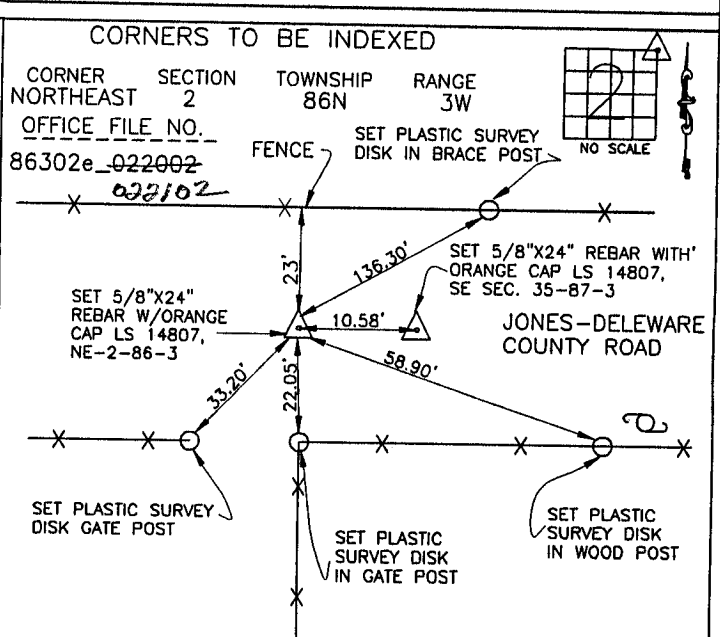
J.D. Tjepkes, L.S. JONES COUNTY ENGINEER'S OFFICE, 19501 HWY. 64, ANAMOSA, IOWA, 52205 (319)462-3785

UNITED STATES PUBLIC LAND SURVEY CORNER CERTIFICATE

LAND SURVEY MONUMENTS SITUATED IN SECTION 2, TOWNSHIP 86
 NORTH, RANGE 3 WEST OF THE 5TH P.M., JONES COUNTY, IOWA



PREVIOUSLY RECORDED IN BOOK N/A, PAGE N/A
 MONUMENT DESCRIPTION AND HOW ESTABLISHED SET 5/8"x24"
REBAR WITH ORANGE CAP LS 14807 ON TOWNSHIP LINE (SINGLE)
PROPORTION METHOD. SET REFERENCE POINTS AND TIED OUT
AS INDICATED. NORTH QUARTER CORNER SECTION 2, TOWNSHIP 86
NORTH, RANGE 3 WEST, 5TH PM, JONES COUNTY, IOWA



PREVIOUSLY RECORDED IN BOOK N/A, PAGE N/A
 MONUMENT DESCRIPTION AND HOW ESTABLISHED SET 5/8"x24"
REBAR WITH ORANGE CAP LS 14807 ON TOWNSHIP LINE (SINGLE)
PROPORTION METHOD. SET REFERENCE POINTS AND TIED OUT
AS INDICATED. NORTHEAST CORNER SECTION 2, TOWNSHIP 86 NORTH
RANGE 3 WEST, 5TH PM, JONES COUNTY, IOWA.

CORNERS TO BE INDEXED

CORNER	SECTION	TOWNSHIP	RANGE

OFFICE FILE NO. _____

PREVIOUSLY RECORDED IN BOOK _____, PAGE _____
 MONUMENT DESCRIPTION AND HOW ESTABLISHED _____

CORNERS TO BE INDEXED

CORNER	SECTION	TOWNSHIP	RANGE

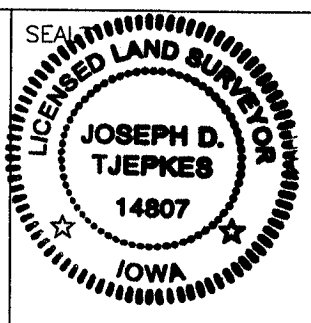
OFFICE FILE NO. _____

PREVIOUSLY RECORDED IN BOOK _____, PAGE _____
 MONUMENT DESCRIPTION AND HOW ESTABLISHED _____

I hereby declare that this plat, survey or report was made by me or under my direct personal supervision and that I am a duly registered Land Surveyor under the laws of the State of Iowa.

Signed: Joseph D. Tjepkes 2-21-02

Joseph D. Tjepkes L.S. Iowa Reg. No. 14807
 My Registration Renewal Date is December 31, 2002



J.D. Tjepkes LS 14807
 JONES COUNTY
 ENGINEER'S OFFICE

19501 HWY. 64,
 ANAMOSA, IOWA,
 52205 (319)462-3785

Hand to Eng



Book 2007 Page 3935

Document 2007 3935 Type 06 007 Pages 1
Date 12/07/2007 Time 12:39:21PM
Rec Amt \$7.00

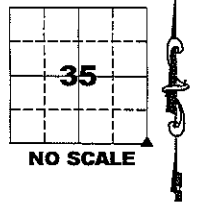
DEBORAH L PEYTON, RECORDER/REGISTRAR
DELAWARE COUNTY IOWA

PREPARED BY
CLARENCE J. WALTON, JONES COUNTY ENGINEER'S OFFICE, 19501 HWY. 64, ANAMOSA, IOWA, 52205 (319) 462-3785

UNITED STATES PUBLIC LAND SURVEY CORNER CERTIFICATE

LAND SURVEY MONUMENTS SITUATED IN SECTION 35, TOWNSHIP 87 NORTH,
RANGE 3 WEST OF THE 5TH PRINCIPAL MERIDIAN, DELAWARE COUNTY, IOWA.

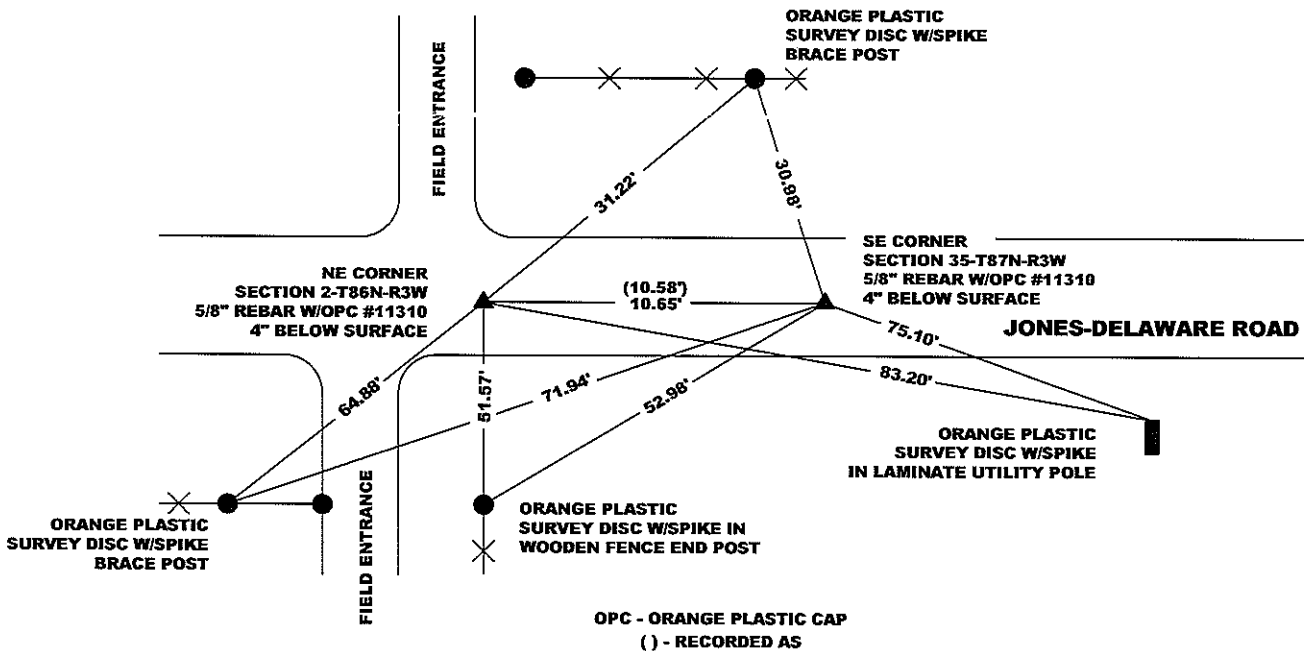
CORNER SECTION TOWNSHIP RANGE
SE 35 87N 3W



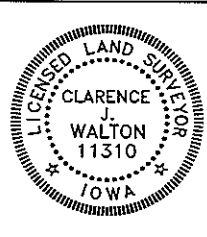
OFFICE FILE NO.

STATE PLANE COORDINATE
NAD 83 IOWA NORTH
N
E

NOTE:
THE STATE PLANE COORDINATE AS INDICATED IS FOR CONVENIENCE ONLY.
THE TIES AS SHOWN SHOULD BE USED TO REPLACE THE CORNER, IF
DESTROYED



PREVIOUSLY RECORDED IN BOOK 2002, PAGE 902
MONUMENT DESCRIPTION AND HOW ESTABLISHED REPLACED CORNER AFTER ROAD CONSTRUCTION W/5/8" REBAR W/OPC "JONES COUNTY 11310"
AT POSITION AS FOUND DURING PRELIMINARY SURVEY FOR ROAD GRADING PROJECT.



I hereby certify that this land surveying document and the related survey work was performed by me or under my direct personal supervision and that I am a duly registered Land Surveyor under the laws of the State of Iowa.
Signed: *Clarence J. Walton* 12/4/07
Clarence J. Walton, L.S.
My Registration Renewal Date is December 31, 2007
Iowa License Number 11310
Pages or sheets covered by this seal: 1 of 1.

- A. THERE IS NO CERTIFICATE FOR THE CORNER ON FILE WITH THE RECORDER OF THE COUNTY IN WHICH THE CORNER IS LOCATED.
- B. THE CORNER MONUMENT HAS BEEN REPLACED OR MODIFIED.
- C. THE SURVEYOR IN RESPONSIBLE CHARGE OF THE LAND SURVEYING ACCEPTS A CORNER POSITION THAT DIFFERS FROM THAT SHOWN IN THE PUBLIC RECORDS OF THE COUNTY IN WHICH THE CORNER IS LOCATED.
- D. THE REFERENCE TIES REFERRED TO IN AN EXISTING PUBLIC RECORD NO LONGER EXIST.

CORNERS TO BE INDEXED			
CORNER	SECTION	TOWNSHIP	RANGE
SE CORNER	35	87N	3W
SW CORNER	36	87N	3W

JONES COUNTY ENGINEER'S OFFICE

19501 HWY. 64, ANAMOSA, IOWA 52205
(319) 462-3785

Not to Engineer

BOOK PAGE 90A
DEBORAH L. PEYTON
DELAWARE CO. RECORDER
N/C

2002 HR 12 AM 9:29

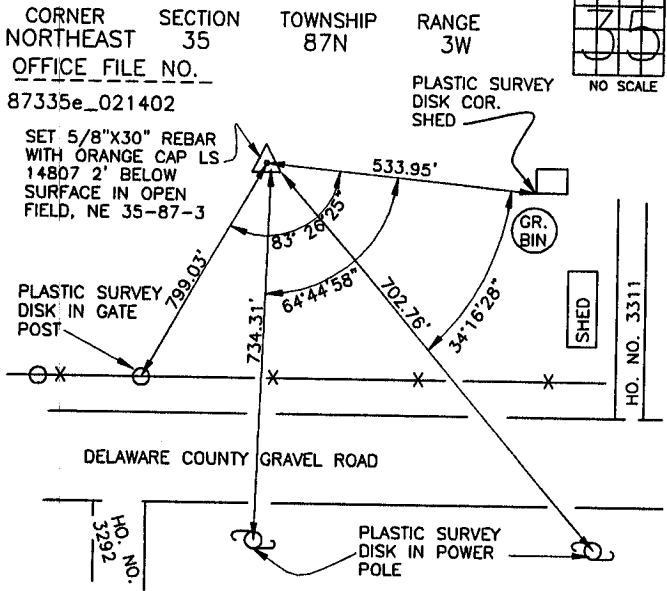
DELAWARE COUNTY IOWA
FILED

J.D. TJEPKES, LS. JONES COUNTY ENGINEER'S OFFICE, 19501 HWY. 64, ANAMOSA, IOWA, 52205 (319)462-3785

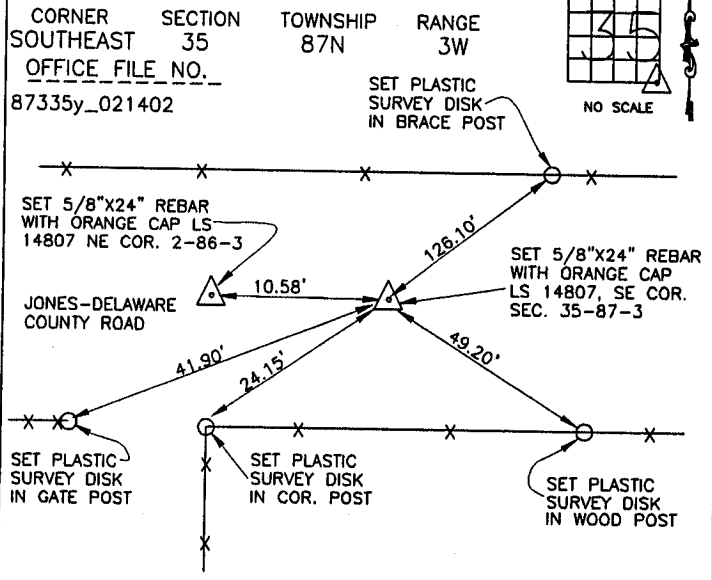
UNITED STATES PUBLIC LAND SURVEY CORNER CERTIFICATE

LAND SURVEY MONUMENTS SITUATED IN SECTION 35, TOWNSHIP 87
NORTH, RANGE 3 WEST OF THE 5TH P.M., DELAWARE COUNTY, IOWA

CORNERS TO BE INDEXED



CORNERS TO BE INDEXED



CORNERS TO BE INDEXED

CORNER	SECTION	TOWNSHIP	RANGE

OFFICE FILE NO. _____

CORNERS TO BE INDEXED

CORNER	SECTION	TOWNSHIP	RANGE

OFFICE FILE NO. _____

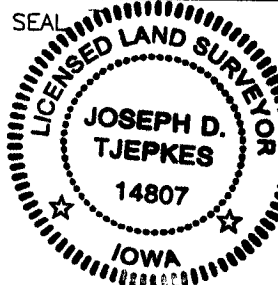
PREVIOUSLY RECORDED IN BOOK _____, PAGE _____
MONUMENT DESCRIPTION AND HOW ESTABLISHED _____

PREVIOUSLY RECORDED IN BOOK _____, PAGE _____
MONUMENT DESCRIPTION AND HOW ESTABLISHED _____

I hereby declare that this plat, survey or report was made by me or under my direct personal supervision and that I am a duly registered Land Surveyor under the laws of the State of Iowa.

Signed: *Joseph D. Tjepkes* 2-21-02

Joseph D. Tjepkes L.S. Iowa Reg. No. 14807
My Registration Renewal Date is December 31, 2002



J.D. TJEPKES LS 14807
JONES COUNTY
ENGINEER'S OFFICE

19501 HWY. 64,
ANAMOSA, IOWA,
52205 (319)462-3785