

2001 1936

FILED
RECORDERS OFFICE
JONES COUNTY IOWA

01 JUN -7 AM 11:40

MARIE KRUTZFIELD
RECORDER 6.00 Pd

Prepared by Wm. Burger Land Surveyors 510 3rd Street West Court, Worthington, Iowa Phone 319 - 855 2028

UNITED STATES PUBLIC LAND SURVEY CORNER CERTIFICATE

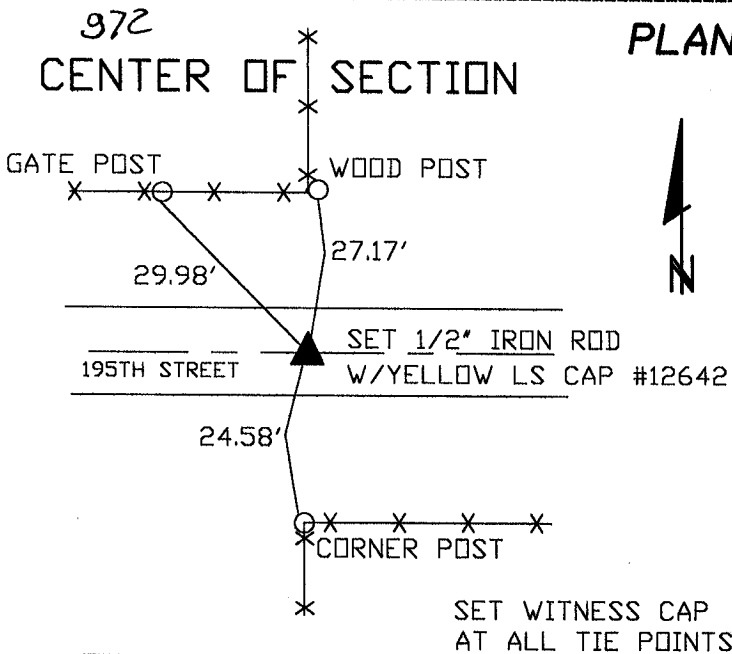
Land Survey Monuments situated in Section 36, Township 86N, Range 3W, of the Fifth Principal Meridian, Jones County, Iowa. Previously recorded in N/A in the Office of the County Recorder

Monument Description and Remarks: (No Corner Certificates found at the County Recorder's Office)

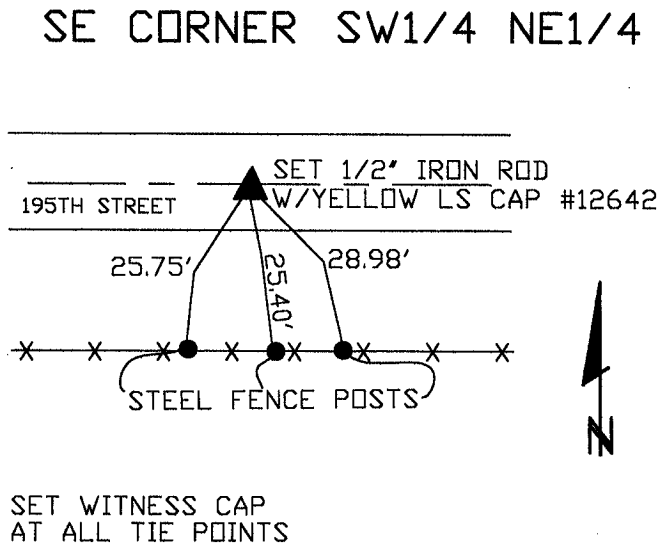
CENTER OF SECTION - SET 1/2" IRON ROD W/YELLOW LS CAP #12642 - USED INFORMATION FROM LEGAL DESCRIPTION LOCATED IN THE OFFICE OF THE JONES COUNTY RECORDER IN BOOK 300, PAGE 56

E1/4 CORNER - SET 1/2" IRON ROD W/YELLOW LS CAP #12642 - SET ON LINE AND MIDWAY BETWEEN THE SE CORNER AND THE NE CORNER

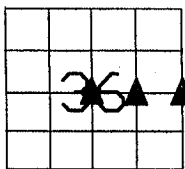
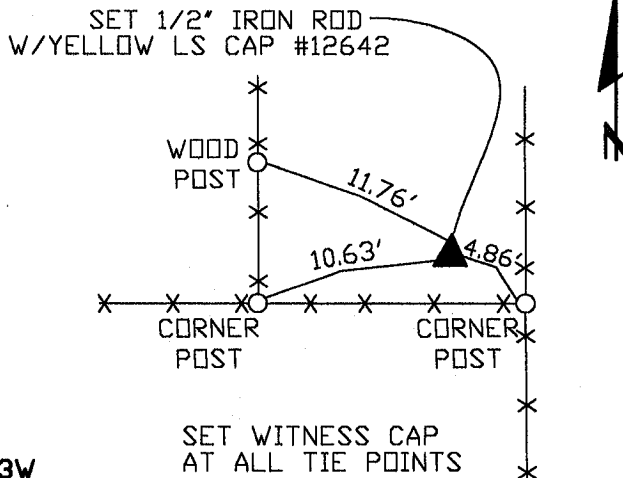
SE CORNER SW1/4 NE1/4 - SET 1/2" IRON ROD W/YELLOW LS CAP #12642 - SET ON LINE AND MIDWAY BETWEEN THE E1/4 CORNER AND THE CENTER OF SECTION



PLAN VIEW 973



974 E1/4 CORNER



SEC. 36 TWP. 86N RANGE 3W

I hereby certify that this land surveying document was prepared and related survey work was performed by me or under my direct personal supervision and that I am a duly licensed Land Surveyor under the laws of the State of Iowa.

William H. Burger 5/31/2001
Date

License number 12642

My license renewal date is December 31, 2002

Pages or Sheets covered by this seal: Sheet 1 of 1

CORNERS TO BE INDEXED

E1/4 CORNER	36	86N	3W
CENTER OF SECTION	36	86N	3W
SE CORNER SW1/4 NE1/4	36	86N	3W