

Instrument #: 2022-0429
 02/11/2022 12:23:23 PM Total Pages: 1
 ZSC SECTION CORNER CERTIFICATE
 Recording Fee: \$7.00 Transfer Tax: \$0
 Sheri L. Jones, Recorder, Jones County Iowa



PREPARED BY: MICHAEL J. WEBER, WEBER SURVEYING, LLC, 26789 46TH AVE, BERNARD, IA 52032 (563) 879-4173

UNITED STATES PUBLIC LAND SURVEY CORNER CERTIFICATE
 OF

LAND SURVEY MONUMENTS SITUATED IN SECTION 10, TOWNSHIP 84 NORTH, RANGE 2 WEST
 OF THE FIFTH PRINCIPAL MERIDIAN, JONES COUNTY, IOWA.
 PREVIOUSLY RECORDED NONE

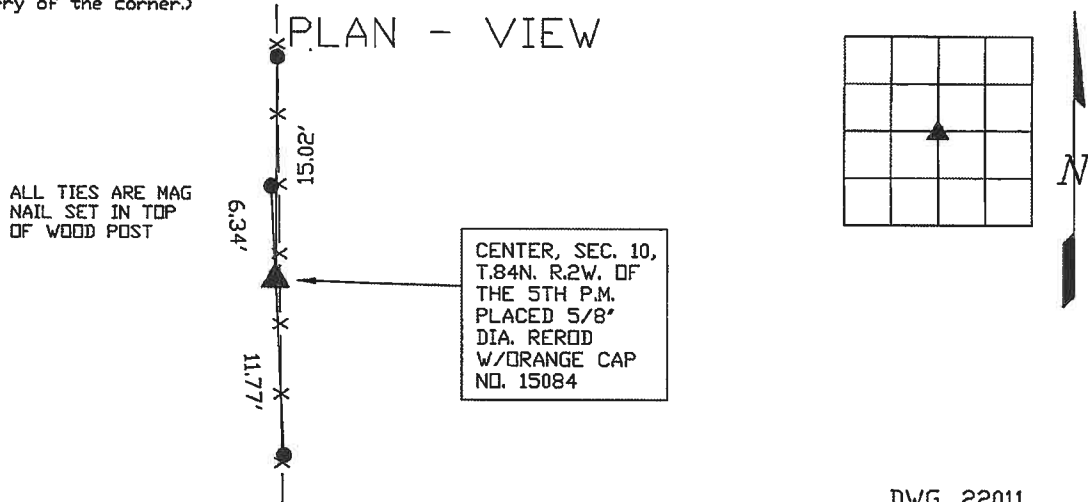
(book, page, document number, etc.)

(Show reason for preparing this certificate, the evidence and detailed procedures used in establishing the corner positions and monumentation found or placed.)

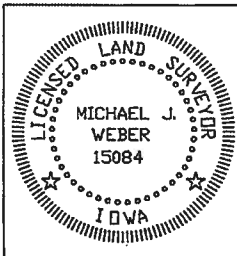
Monument Description and Remarks:

-CENTER, SEC. 10, T.84N. R.2W. OF THE 5TH P.M. PLACED 5/8" DIA. REROD W/ORANGE CAP NO. 15084. ESTABLISHED CORNER AT THE INTERSECTION OF THE LINE BETWEEN THE WEST 1/4 CORNER AND THE OCCUPATION FENCELINE NEAR THE EAST 1/4 CORNER WITH THE OCCUPATION FENCELINE RUNNING NORTH AND SOUTH.

(Show a minimum of three reference ties to durable physical objects, relevant monuments and physical conditions that will enable recovery of the corner.)



DWG. 22011



I HEREBY CERTIFY THAT THIS LAND SURVEYING DOCUMENT WAS PREPARED AND THE RELATED SURVEY WORK WAS PERFORMED BY ME OR UNDER MY DIRECT PERSONAL SUPERVISION AND THAT I AM A DULY LICENSED LAND SURVEYOR UNDER THE LAWS OF THE STATE OF IOWA.
Michael J. Weber February 2, 2022
 MICHAEL J. WEBER (DATE)
 LICENSE NUMBER 15084
 MY LICENSE RENEWAL DATE IS DECEMBER 31, 2023
 SHEETS COVERED BY THIS SEAL: This sheet

List Corners to be Indexed		
Corner	Sec	Twp Range
CENTER	10	84N 2W