

Instrument #: 2017-0695
 03/17/2017 10:53:07 AM Total Pages: 1
 ZSC SECTION CORNER CERTIFICATE
 Recording Fee: \$7.00 Transfer Tax: \$0
 Sheri L. Jones, Recorder, Jones County Iowa

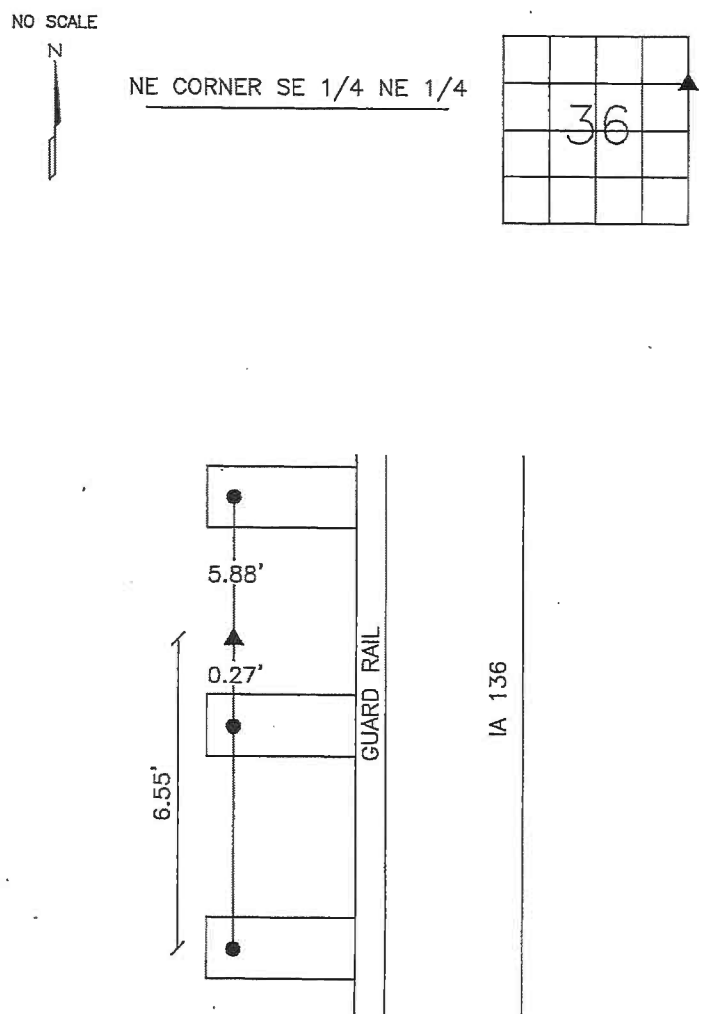
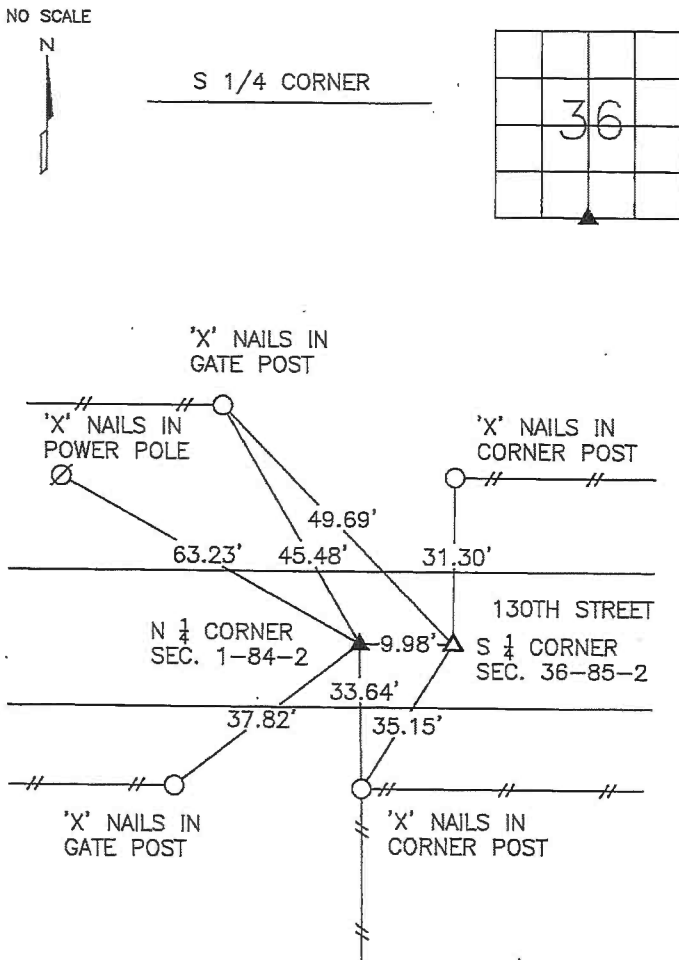


PREPARED BY

STEPHEN MICHAEL BRAIN, BRAIN ENGINEERING, INC., 1540 MIDLAND COURT NE, CEDAR RAPIDS, IOWA PH. (319) 294-9424

UNITED STATES PUBLIC LAND SURVEY CORNER CERTIFICATE

LAND SURVEY MONUMENTS SITUATED IN SECTION 36, TOWNSHIP 85 NORTH
 RANGE 2 WEST OF THE 5TH P.M., JONES COUNTY, IOWA.



ALL TIES MAG NAILS WITH PLASTIC TAGS ON GUARD RAIL POSTS

PREVIOUSLY RECORDED IN BOOK _____ PAGE _____
 MONUMENT DESCRIPTION AND HOW ESTABLISHED:
 SET 1/2" REBAR WITH YELLOW PLASTIC CAP #9647 AS A MIDPOINT ON THE LINE BETWEEN SW CORNER AND SE CORNER OF SECTION 36.

PREVIOUSLY RECORDED IN BOOK _____ PAGE _____
 MONUMENT DESCRIPTION AND HOW ESTABLISHED:
 FOUND 1/2" REBAR WITH YELLOW PLASTIC CAP #12642 AS RECORDED IN BOOK P PAGE 155, JONES COUNTY RECORDER'S OFFICE, IOWA.



I hereby certify that this land surveying document and the related survey work was performed by me or under my direct personal supervision and that I am a duly licensed Land Surveyor under the laws of the State of Iowa.
 Signed _____ Date 3/15/17
 Stephen Michael Brain, L.S.
 My License Renewal Date is December 31, 2018
 License Number 9647
 Pages or sheets covered by this seal: 1/1

- A. THERE IS NO CERTIFICATE FOR THE CORNER ON FILE WITH THE RECORDER OF THE COUNTY IN WHICH THE CORNER IS LOCATED
- B. THE SURVEYOR IN RESPONSIBLE CHARGE OF THE LAND SURVEYING ACCEPTS A CORNER POSITION WHICH DIFFERS FROM THAT SHOWN IN THE PUBLIC RECORDS OF THE COUNTY IN WHICH THE CORNER IS LOCATED.
- C. THE CORNER MONUMENT IS REPLACED OR MODIFIED IN ANY WAY.
- D. THE REFERENCE TIES REFERRED TO IN AN EXISTING PUBLIC RECORD ARE NOT CORRECT.

CORNERS TO BE INDEXED			
CORNER	SECTION	TOWNSHIP	RANGE
S 1/4 CORNER	36	T85N	R2W
NE CORNER	36	T85N	R2W
SE 1/4 NE 1/4			

BRAIN ENGINEERING, INC.
 1540 MIDLAND COURT NE
 CEDAR RAPIDS, IOWA 52402
 (319) 294-9424

284917-20
 mab
 3/15/17

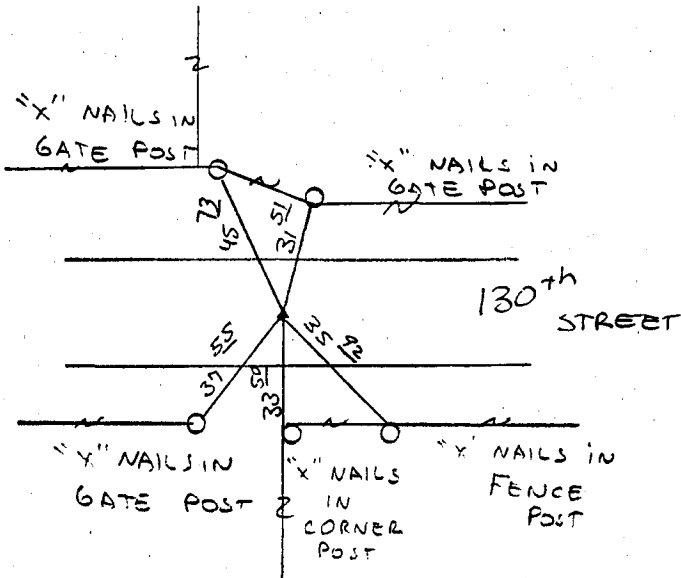
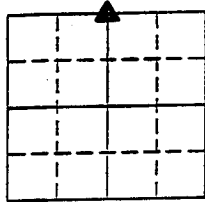
UNITED STATES PUBLIC LAND SURVEY CORNER CERTIFICATE

LAND SURVEY MONUMENTS SITUATED IN SECTION 1, TOWNSHIP 84 NORTH
RANGE 2 WEST OF THE 5TH P.M., JONES COUNTY, IOWA.

NO SCALE



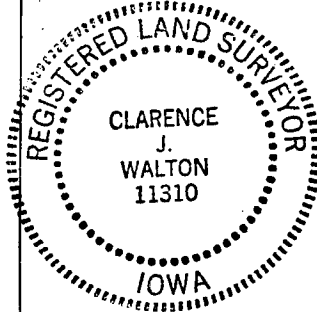
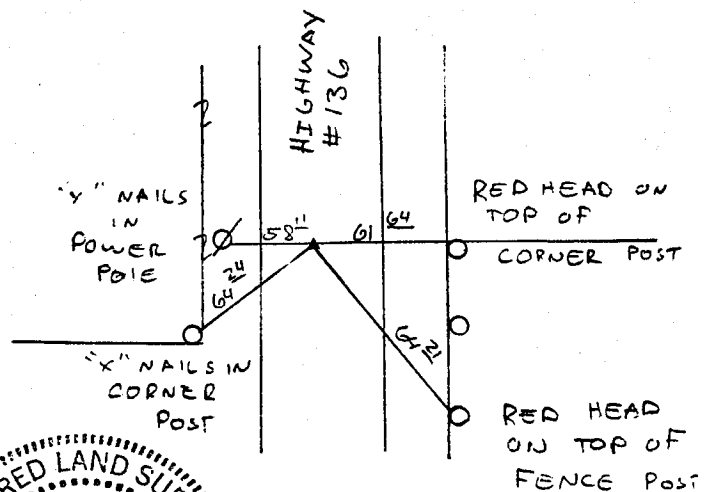
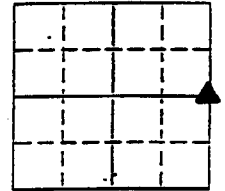
N 1/4 CORNER



NO SCALE



E 1/4 CORNER



E 1/4 COR. SEC. 1
D. MOON
3-9-95

PREVIOUSLY RECORDED IN BOOK _____ PAGE _____

MONUMENT DESCRIPTION AND HOW ESTABLISHED FOUND

1/2" REBAR 6" BELOW SURFACE

PREVIOUSLY RECORDED IN BOOK _____ PAGE _____

MONUMENT DESCRIPTION AND HOW ESTABLISHED FOUND

PK SPIKE AT SURFACE, 1.15'

WEST OF E

I hereby certify that this plat, survey or report was made by me or under my direct personal supervision and that I am a duly registered Land Surveyor under the laws of the State of Iowa.

Signed Clarence J. Walton Date 2/9/95
Clarence J. Walton, L.S. Iowa Reg No. 11310
My Registration Renewal Date Is December 31, 1995

CORNERS TO BE INDEXED			
CORNER	SECTION	TOWNSHIP	RANGE
N 1/4	1	84	2
E 1/4	1	84	2

BRAIN ENGINEERING, INC.

700 11TH STREET, SUITE 201
MARION, IOWA 52302
(319) 373-1318

14014.10