

2006 2041

FILED
RECORDERS OFFICE
JONES COUNTY IOWA

06 MAY 30 AM 8:06

MARKIE KRUTZFIELD
RECORDER 7.00 PM

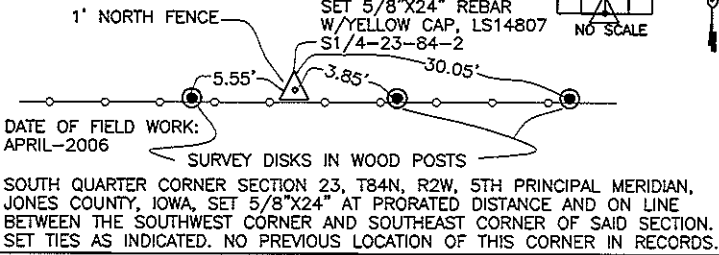
J.D. TJEKES LS, 23428 RIDGE RD. ANAMOSA, IOWA, 52205 (319)462-6067

UNITED STATES PUBLIC LAND SURVEY CORNER CERTIFICATE

LAND SURVEY MONUMENTS SITUATED IN SECTION 23, TOWNSHIP 84
NORTH, RANGE 2 WEST OF THE 5TH P.M., JONES COUNTY, IOWA

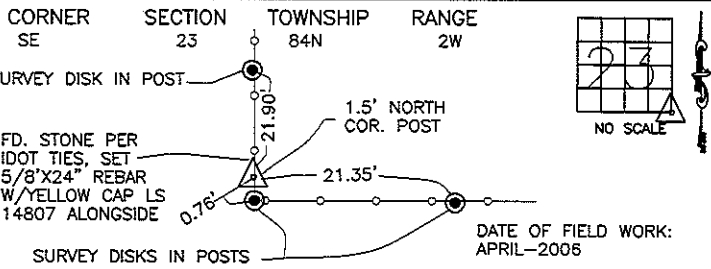
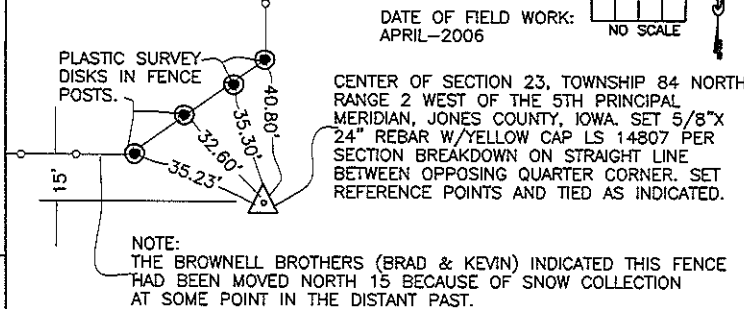
CORNERS TO BE INDEXED

CORNER	SECTION	TOWNSHIP	RANGE
S1/4	23	84N	2W



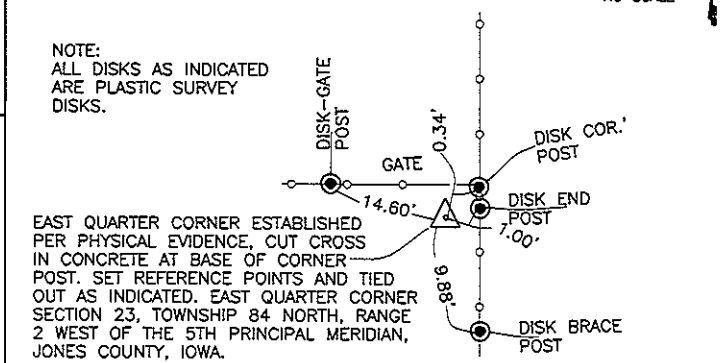
CORNERS TO BE INDEXED

CORNER	SECTION	TOWNSHIP	RANGE
CENTER	23	84N	2W



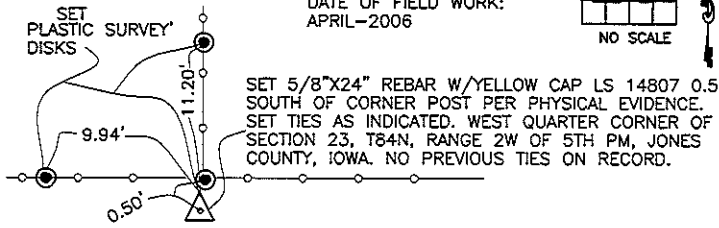
CORNERS TO BE INDEXED

CORNER	SECTION	TOWNSHIP	RANGE
E1/4	23	84N	2W



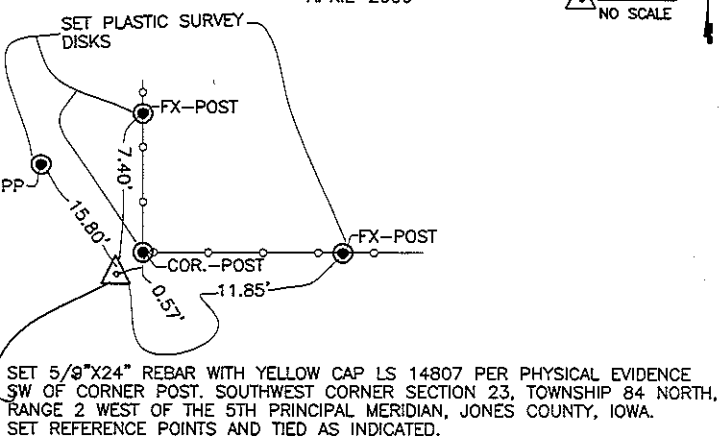
CORNERS TO BE INDEXED

CORNER	SECTION	TOWNSHIP	RANGE
W1/4	23	84N	2W



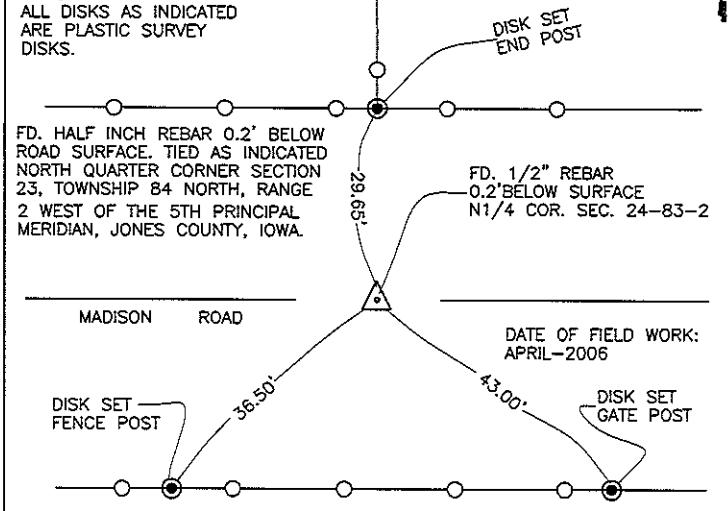
CORNERS TO BE INDEXED

CORNER	SECTION	TOWNSHIP	RANGE
SW	23	84N	2W



CORNERS TO BE INDEXED

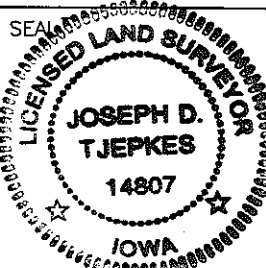
CORNER	SECTION	TOWNSHIP	RANGE
N1/4	23	84N	2W



I hereby declare that this plat, survey or report was made by me or under my direct personal supervision and that I am a duly registered Land Surveyor under the laws of the State of Iowa.

Signed: *[Signature]* 5-29-06

Joseph D. Tjepkes L.S. Iowa Reg. No. 14807
My Registration Renewal Date is December 31, 2006



J.D. TJEKES LS 14807
23428 RIDGE ROAD
ANAMOSA, IOWA 52205